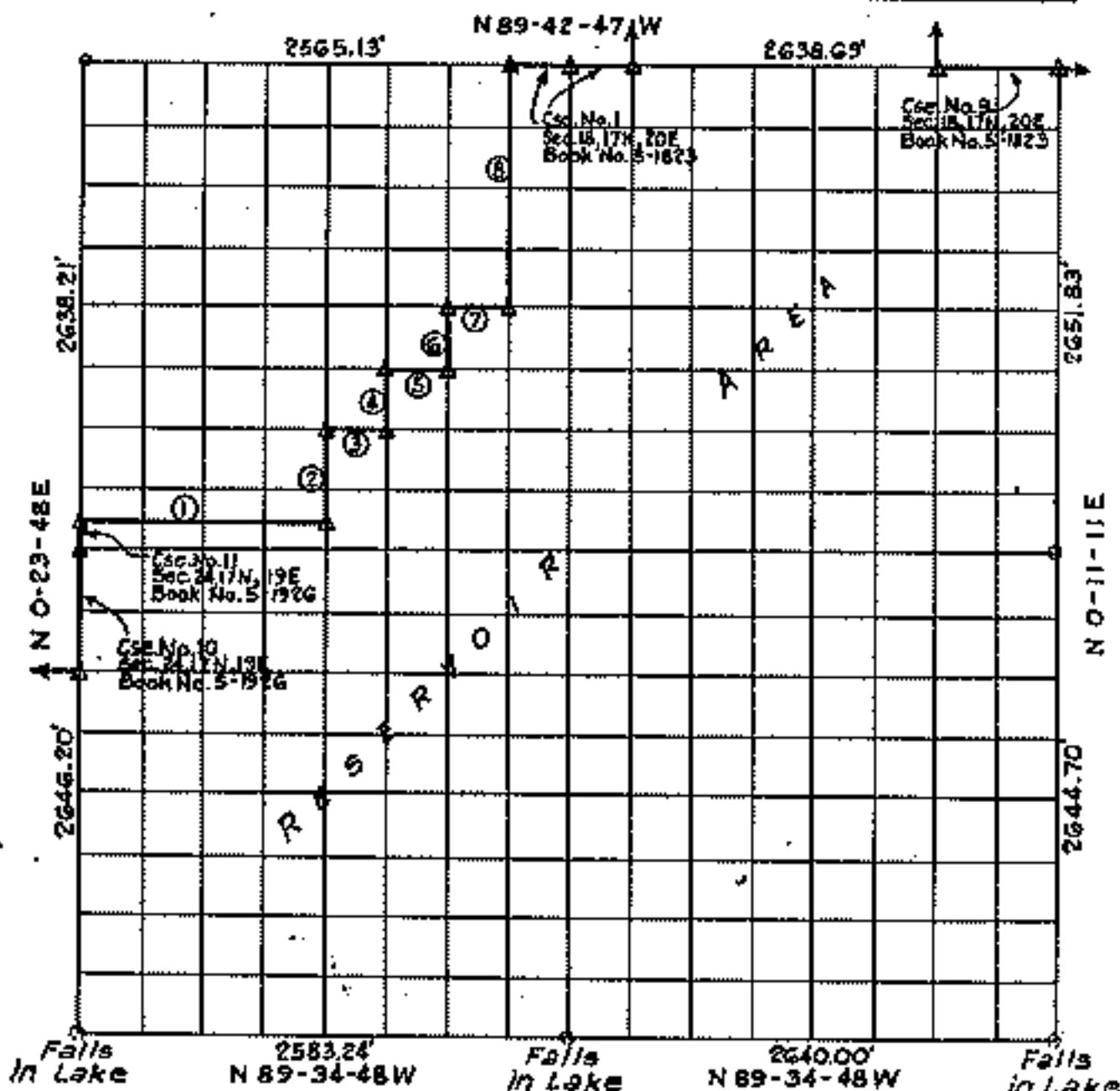


PARTIAL BOUNDARY SURVEYS  
**FORT. GIBSON LAKE, AREA "A"**  
**OKLAHOMA**

Performed under Contract Number DACW56-77-C-0058  
 SEC. 19, T. 17N., R. 20E., COUNTY CHEROKEE



Course No.	Distance	Bearing	Course No.	Distance	Bearing
1	1253.62'	S 89-33-48 E			
2	504.08'	N 0-12-01 E			
3	330.00'	S 89-36-03 E			
4	330.29'	N 0-12-01 E			
5	330.00'	S 89-37-10 E			
6	330.40'	N 0-12-01 E			
7	330.31'	S 89-38-18 E			
8	1321.49'	N 0-12-01 E			



Certificate of Survey

I hereby certify that the above plat is a true and correct representation of the survey made in Section 19, T. 17N., R. 20E., Cherokee County, Oklahoma.

*Charles J. Finklea*  
 Charles J. Finklea  
 Registered Land Surveyor No. 35

Scale: 1:10,000  
 Date: May 1977  
 Field Book No. 1928

Sheet 1 of 2

Legend

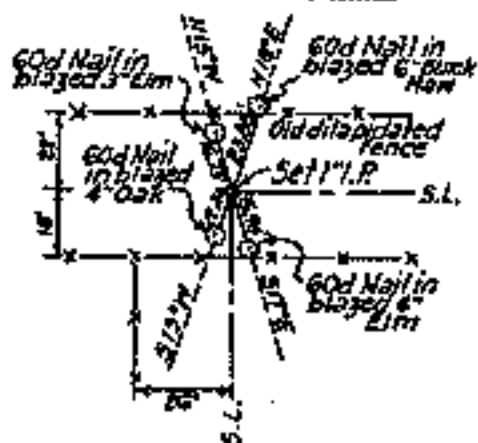
- ▲ Monument
- Orig. Corner
- Iron Pin
- ▲ Mon. by O.H.D.

# FORT GIBSON LAKE, AREA "A" OKLAHOMA

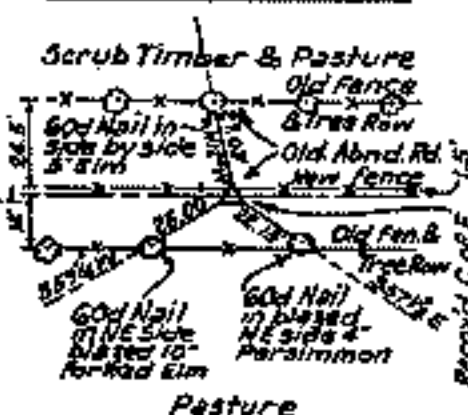
## SECTION AND QUARTER SECTION CORNER REFERENCES FOR

### SECTION 19, T.17N., R.20E., COUNTY CHEROKEE

#### N.W. CORNER



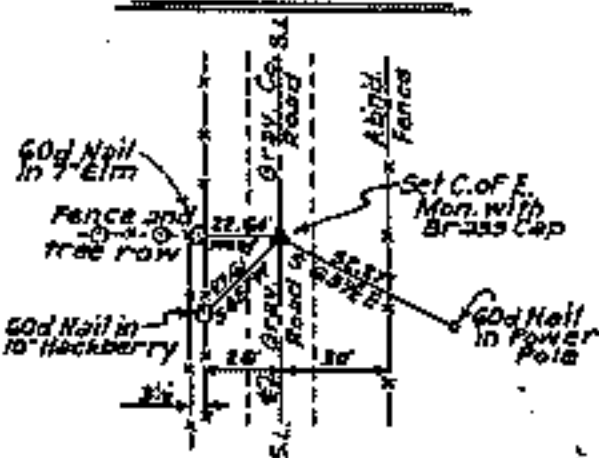
#### NORTH 1/4 COR.



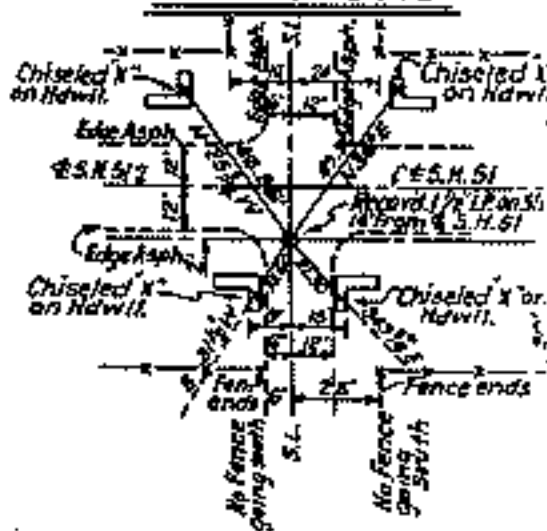
#### N.E. CORNER



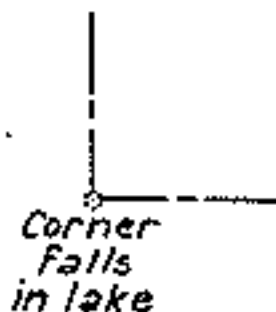
#### WEST 1/4 COR.



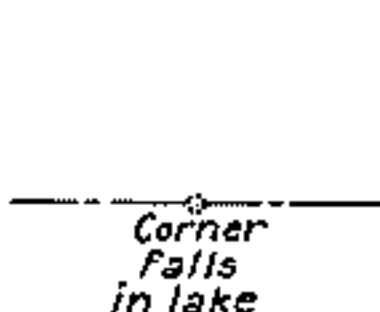
#### EAST 1/4 COR.



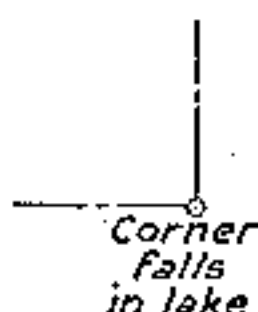
#### S.W. CORNER



#### SOUTH 1/4 COR.



#### S.E. CORNER



Sheet 2 of 2

Scale: - 1" = 50'  
Date: - May 1977  
Field Book No. 5-1922

#### Certificate of Survey

I hereby certify that the above plat is a true and correct representation of the survey made in Sec. 19, T. 17 N., R. 20 E., Cherokee County, Oklahoma

Charles J. Finklea  
Registered Land Surveyor No. 95



#### Legend

- △ Monument
- Orig. Corner
- Iron Pin
- ▲ Mon. by O.H.D.