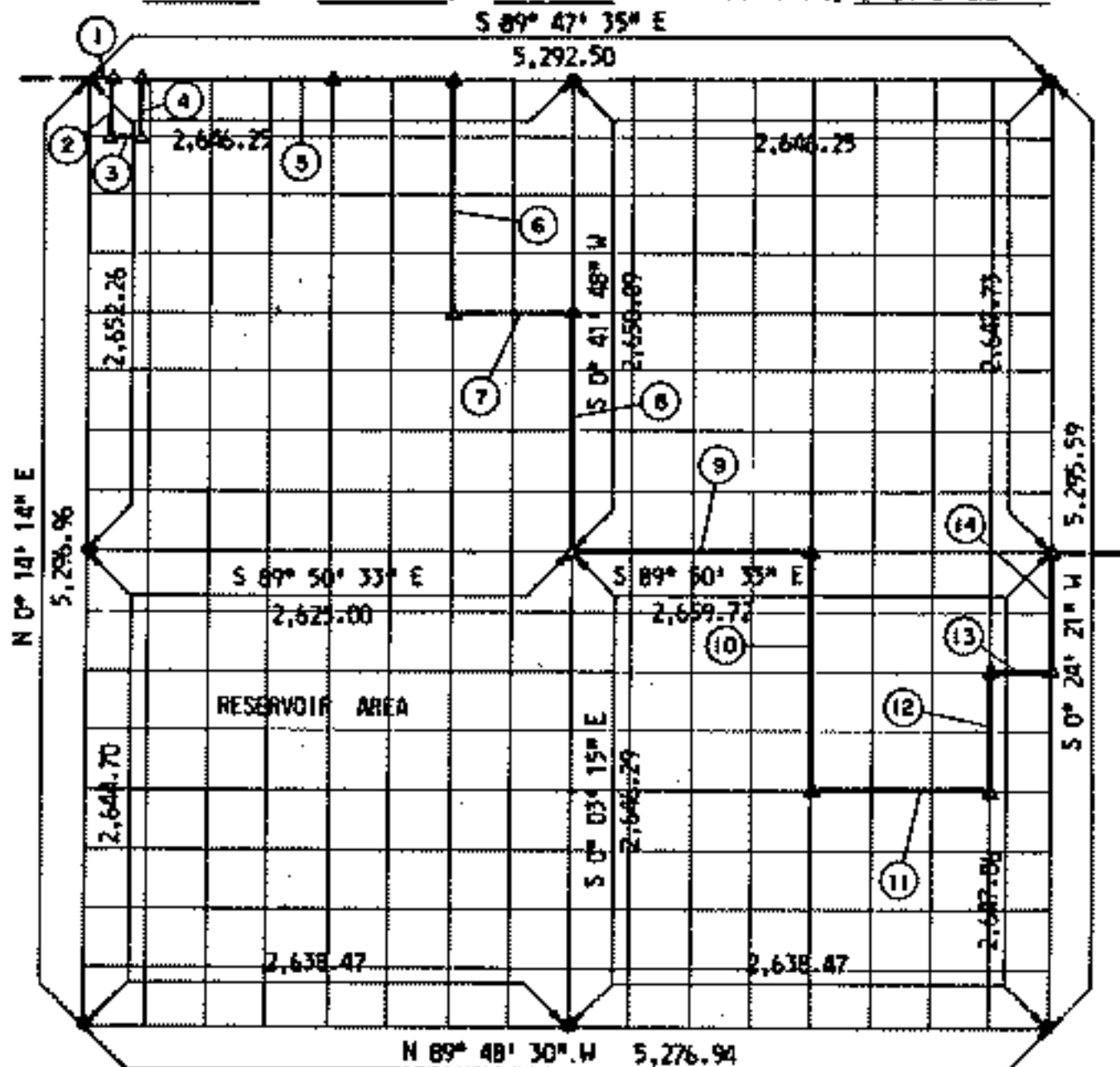


PARTIAL BOUNDARY SURVEYS
FORT GIBSON LAKE
AREA "D"

Performed Under Contract Number DACW 56-71-C-010

SEC. 20 T 17 N. R. 20 E COUNTY, CHEROKEE



Course No.	Distance	Bearing	Course No.	Distance	Bearing
1	110.00	S 89° 47' 35" E	8	1,325.04	S 0° 41' 48" W
2	400.00	S 0° 14' 14" W	9	1,329.86	S 89° 50' 33" E
3	200.00	S 89° 47' 35" E	10	1,323.53	S 0° 10' 33" W
4	400.00	N 0° 14' 14" E	11	993.41	S 89° 49' 31" E
5	1,674.68	S 89° 47' 35" E	12	661.91	N 0° 20' 54" E
6	1,325.32	S 0° 34' 55" W	13	331.80	S 89° 50' 01" E
7	658.91	S 89° 49' 04" E	14	661.96	N 0° 24' 21" E

CERTIFICATE OF SURVEY
HEREBY CERTIFY THAT THE
ABOVE PLAT IS A TRUE AND
CORRECT REPRESENTATION OF
THE SURVEY MADE IN SECTION
20, T 17 N, R 20 E, CHEROKEE
COUNTY, OKLAHOMA.

Field Book No. 5-1824

Date MAY, 1971

MANSUR-STERLE-WILLIAMS, INC.
CONSULTING ENGINEERS

Under the Supervision of
U.S. ARMY ENGINEER DISTRICT, TULSA
CORPS OF ENGINEERS.

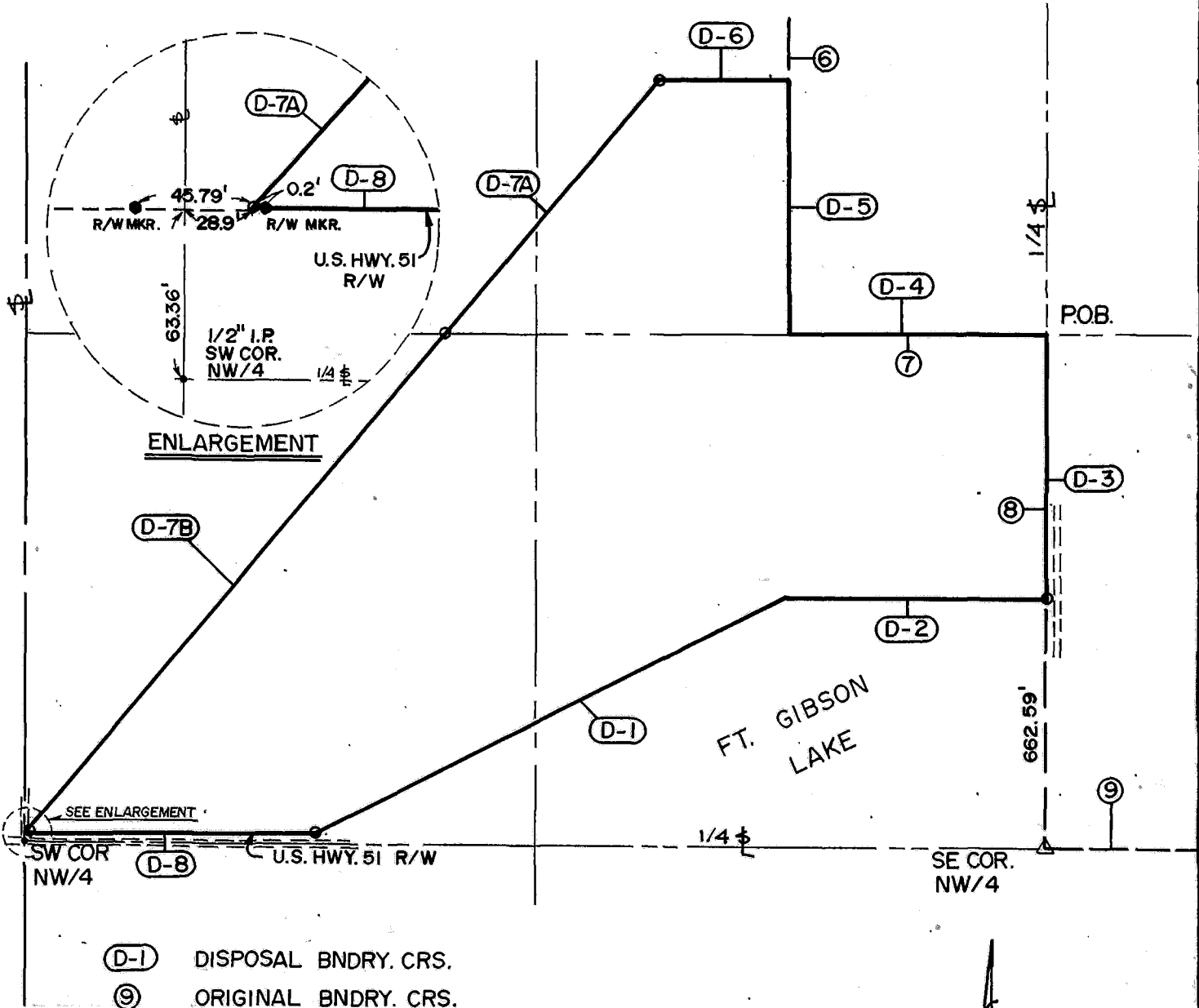
LEGEND
Δ MONUMENT
□ ORIGINAL CORNER
○ IRON PIN

Chris L. Mansur

**DISPOSAL TRACT SURVEY PLAT
FT. GIBSON DAM & RESERVOIR
LAKE FT. GIBSON, OKLA.**

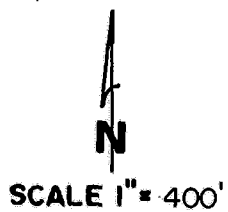
SEC. 20 , T 17 N , R 20 E , COUNTY CHEROKEE

PARCEL NO. 14 Performed Under Contract No. DACA56-88-D-0050



- (D-1) DISPOSAL BNDRY. CRS.
- (9) ORIGINAL BNDRY. CRS.

TOTAL AREA: 52.09 ACRES



Course No.	Distance	Bearing	Course No.	Distance	Bearing
D-1	1339.63	N 63°27'34" E			
D-2	657.65	S 89°51'51" E			
D-3	662.42	N 00°41'48" E			
D-4	658.86	N 89°47'44" W			
D-5	662.83	N 00°34'21" E			
D-6	330.14	N 89°47'55" W			
D-7A	866.80	S 40°20'05" W			
D-7B	1653.65	S 40°19'44" W			
D-8	749.47	S 89°40'13" E			

Field Book No. 5-1824 Date JAN., 1989

CERTIFICATE OF SURVEY ENTZ ENGINEERING & ASSOCIATES INC. AND
I Hereby Certify That The HUFFMAN SURVEYING CO., INC.
Above Plat is a True and Correct
Representation of the Survey
Made in Sec. 20, T. 17 N., R. 20 E.
A Joint Venture
for

U.S. ARMY ENGINEER DISTRICT, TULSA
CORPS OF ENGINEERS

- LEGEND —
- Δ MONUMENT
 - ORIGINAL CORNER
 - IRON PIN W/ CAP

Ron Huffman
Ron Huffman L.S. 1020