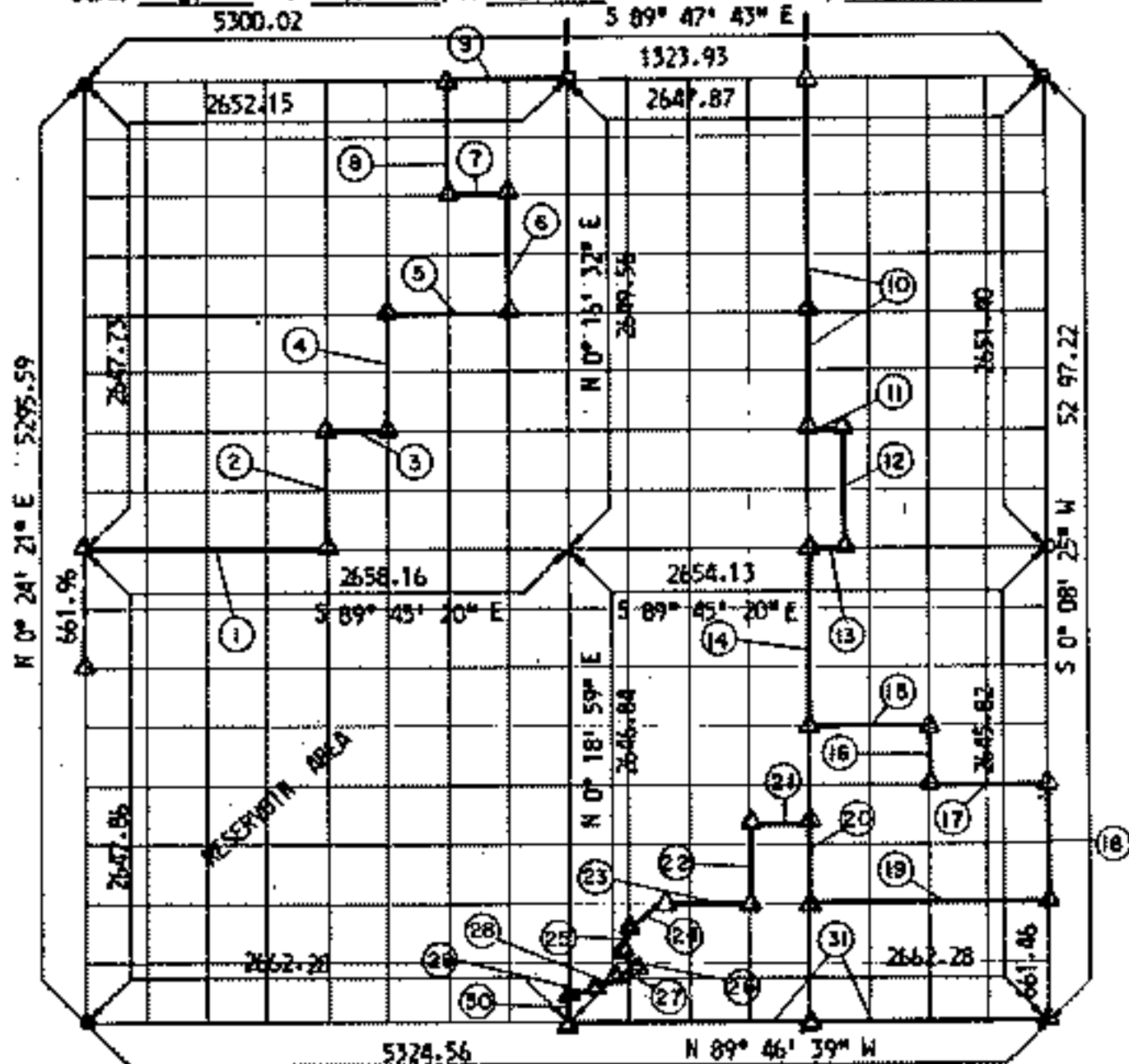


**PARTIAL BOUNDARY SURVEYS
FORT GIBSON LAKE
AREA "D"**

Performed Under Contract Number DACW 56-71-C-010

SEC. 21 T 17 N. R. 20 E COUNTY, CHEROKEE



Course No.	Distance	Bearing	Course No.	Distance	Bearing
1	1329.08	S 89° 45' 20" E	14	992.37	S 0° 13' 42" W
2	662.16	N 0° 20' 27" E	15	664.30	S 89° 45' 50" E
3	332.08	S 89° 45' 56" E	16	330.76	S 0° 11' 03" W
4	662.22	N 0° 19' 29" E	17	664.55	S 89° 46' 00" E
5	663.79	S 89° 46' 32" E	18	661.45	S 0° 08' 25" W
6	662.33	N 0° 17' 31" E	19	1330.12	N 89° 46' 19" W
7	331.71	N 89° 47' 08" W	20	496.18	N 0° 13' 42" E
8	662.28	N 0° 18' 30" E	21	332.34	N 89° 46' 05" W
9	663.04	S 89° 47' 43" E	22	496.21	S 0° 15' 01" W
10	1987.86	S 0° 12' 29" W	23	447.02	N 89° 46' 19" W
11	165.78	S 89° 45' 56" E	24	291.17	S 62° 38' 21" W
12	662.65	S 0° 11' 58" W	25	95.09	S 48° 56' 00" W
13	165.88	N 89° 45' 20" W	26	72.18	S 18° 55' 22" E

CERTIFICATE OF SURVEY
I HEREBY CERTIFY THAT THE ABOVE PLAT IS A TRUE AND CORRECT REPRESENTATION OF THE SURVEY MADE IN SECTION 21, T. 17 N., R. 20 E., CHEROKEE COUNTY, OKLAHOMA.

Field Book No. 5-1825 Date MAY, 1971

**MANSUR-STEELE-WILLIAMS, INC.
CONSULTING ENGINEERS**

Under the Supervision of
**U.S. ARMY ENGINEER DISTRICT, TULSA
CORPS OF ENGINEERS**

LEGEND
△ MONUMENT
□ ORIGINAL CORNER
○ IRON PIN

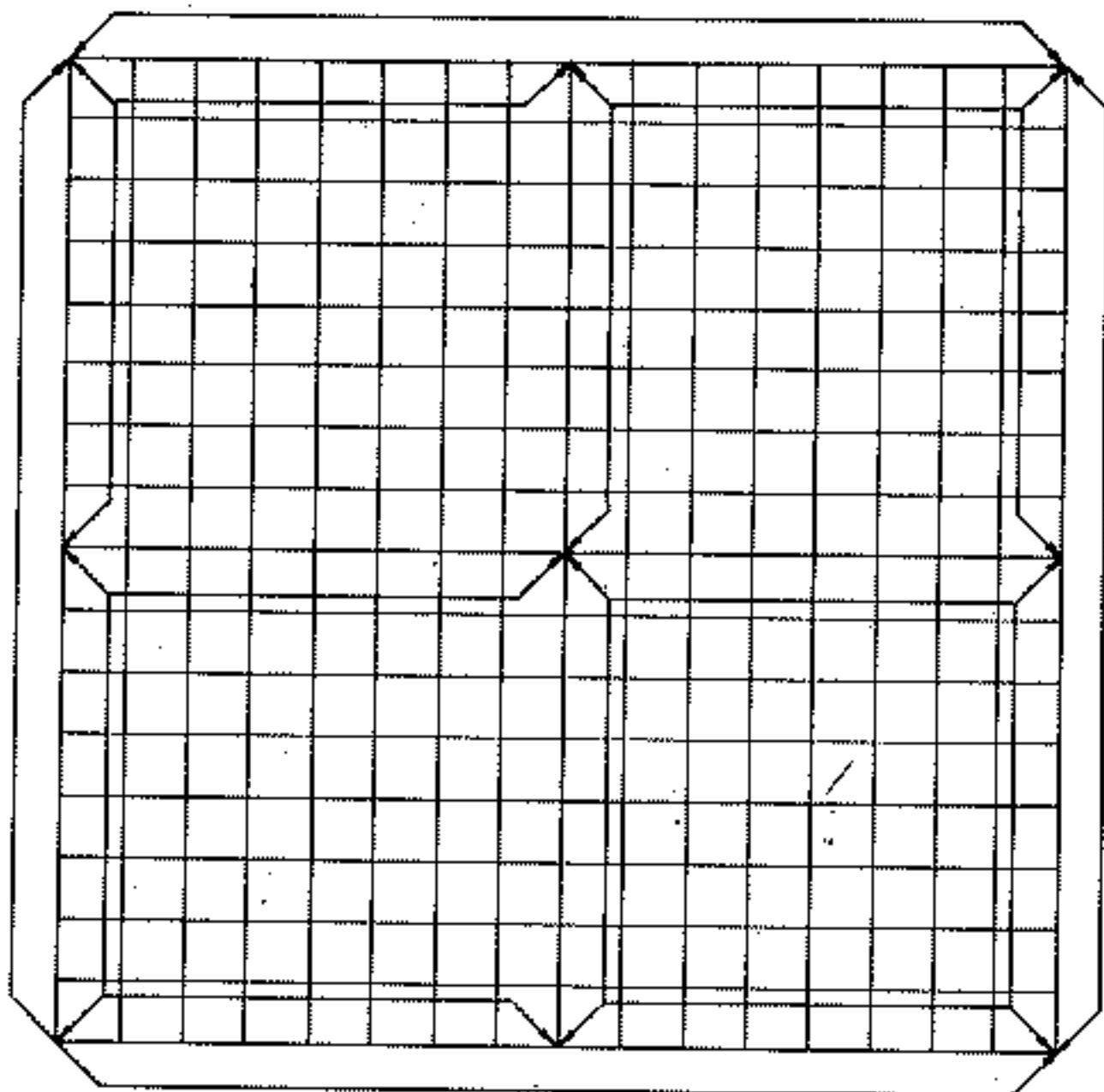
Walter S. Williams
REGISTERED PROFESSIONAL ENGINEER

SHEET 1 OF 2

**PARTIAL BOUNDARY SURVEYS
FORT GIBSON LAKE
AREA "D"**

Performed Under Contract Number DACW 56-71-C-0110

SEC. 21 T. 17 N, R. 20 E COUNTY, CHEROKEE



Course No.	Distance	Bearing	Course No.	Distance	Bearing
27	162.00	S 56° 02' 47" W			
28	114.91	S 82° 33' 55" W			
29	45.89	S 49° 46' 04" W			
30	190.00	S 0° 08' 12" W			
31	2662.28	S 89° 46' 39" E			

CERTIFICATE OF SURVEY
 I HEREBY CERTIFY THAT THE ABOVE PLAT IS A TRUE AND CORRECT REPRESENTATION OF THE SURVEY MADE IN SECTION 21, T. 17 N. R. 20 E., CHEROKEE COUNTY, OKLAHOMA.
[Signature]
 REGISTERED PROFESSIONAL ENGINEER

Field Book No. 5-1825 Date MAY, 1971

**MANSUR-STEELE-WILLIAMS, INC.
CONSULTING ENGINEERS**

Under the Supervision of
**U.S. ARMY ENGINEER DISTRICT, TULSA
CORPS OF ENGINEERS**

LEGEND
 Δ MONUMENT
 □ ORIGINAL CORNER
 ○ 1/2" DIA. PIN