

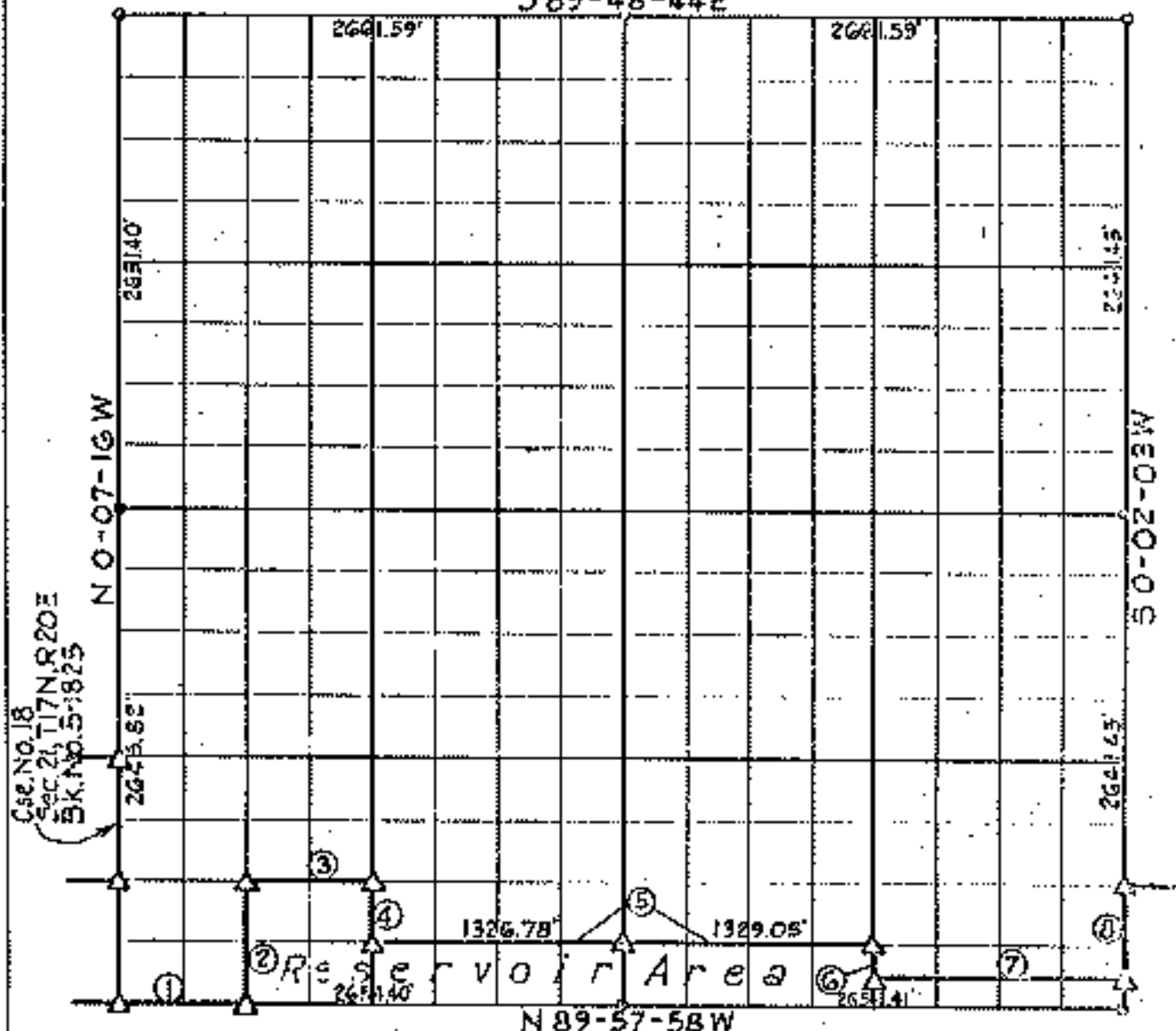
FORT GIBSON LAKE

AREA "I"

Performed under Contract Number DACW 56-73-C-0230

SEC. 22 T. 17N. R. 20E. COUNTY CHEROKEE

589-48-44E



COURSE NO.	DISTANCE	BEARING	COURSE NO.	DISTANCE	BEARING
1	623.60	S 09° 57' 50" E			
2	661.32	N 0° 06' 06" W			
3	663.63	S 09° 57' 18" E			
4	322.11	S 0° 04' 56" E			
5	2655.83	S 89° 57' 10" E			
6	109.08	S 0° 00' 17" E			
7	1327.32	S 89° 57' 10" E			
8	195.27	N 0° 02' 03" E			

Book No. 5-1825 Date: October, 1973

I, Charles J. Nickles, hereby certify that the above plot is a true and correct representation of the survey made in Section 22, T. 17N., R. 20E.

- LEGEND**
- △ Monument
 - Original Stone
 - Iron Pin
 - ▲ Mon. by Q.H.D.

Charles J. Nickles
Registered Land Surveyor No. 35

FORT GIBSON LAKE

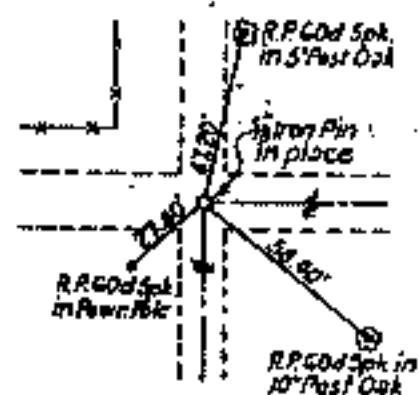
AREA "I"

SECTION AND QUARTER SECTION CORNER

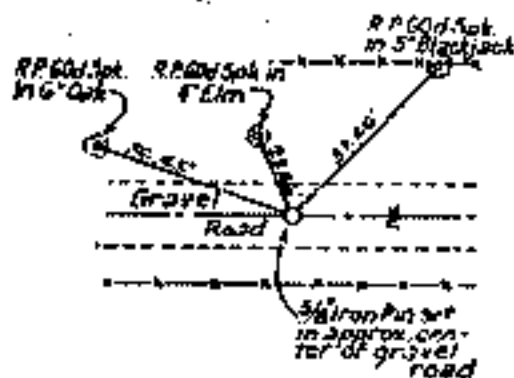
REFERENCES FOR

SECTION 22, T.17N., R.20E., CHEROKEE CO.

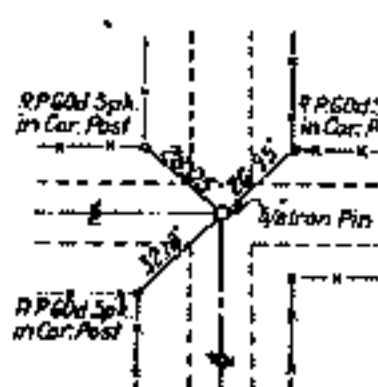
N.W. SECTION CORNER



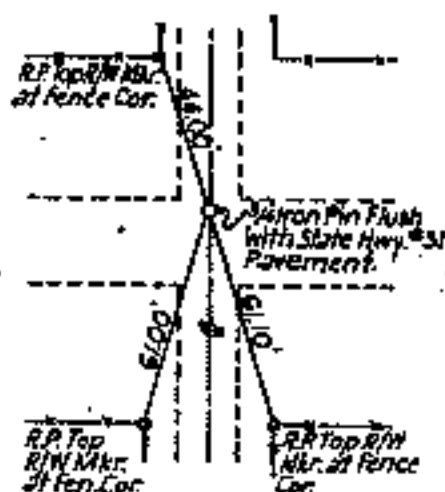
NO. 1/4 CORNER



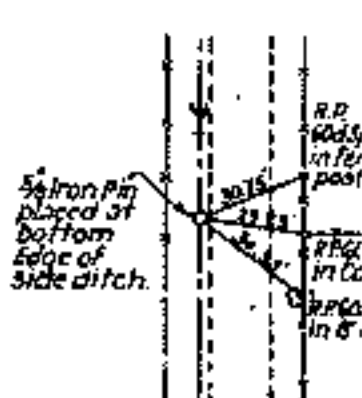
N.E. SECTION CORNER



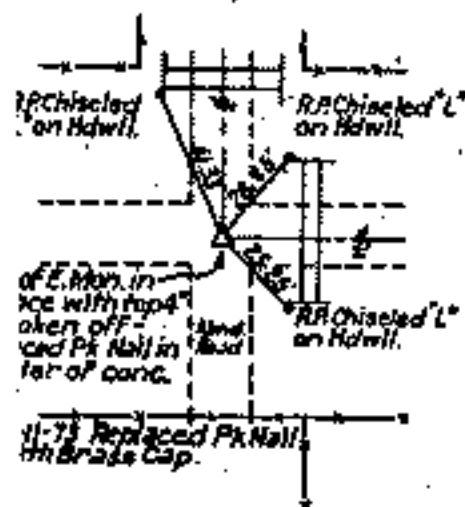
WEST 1/4 CORNER



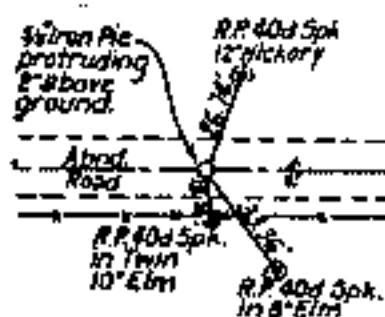
EAST 1/4 CORNER



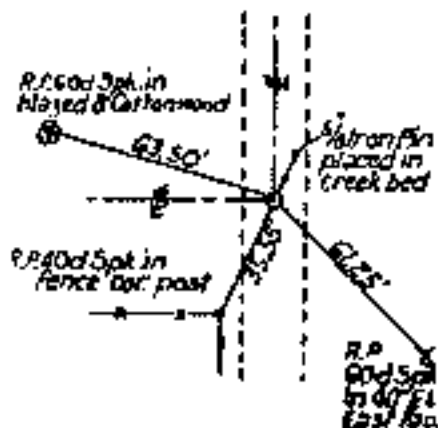
S.W. SECTION CORNER



SO. 1/4 CORNER



SE. SECTION CORNER



Scale: 1" = 50'
Date: June - October 1973
Field Book No. 5-1B71

