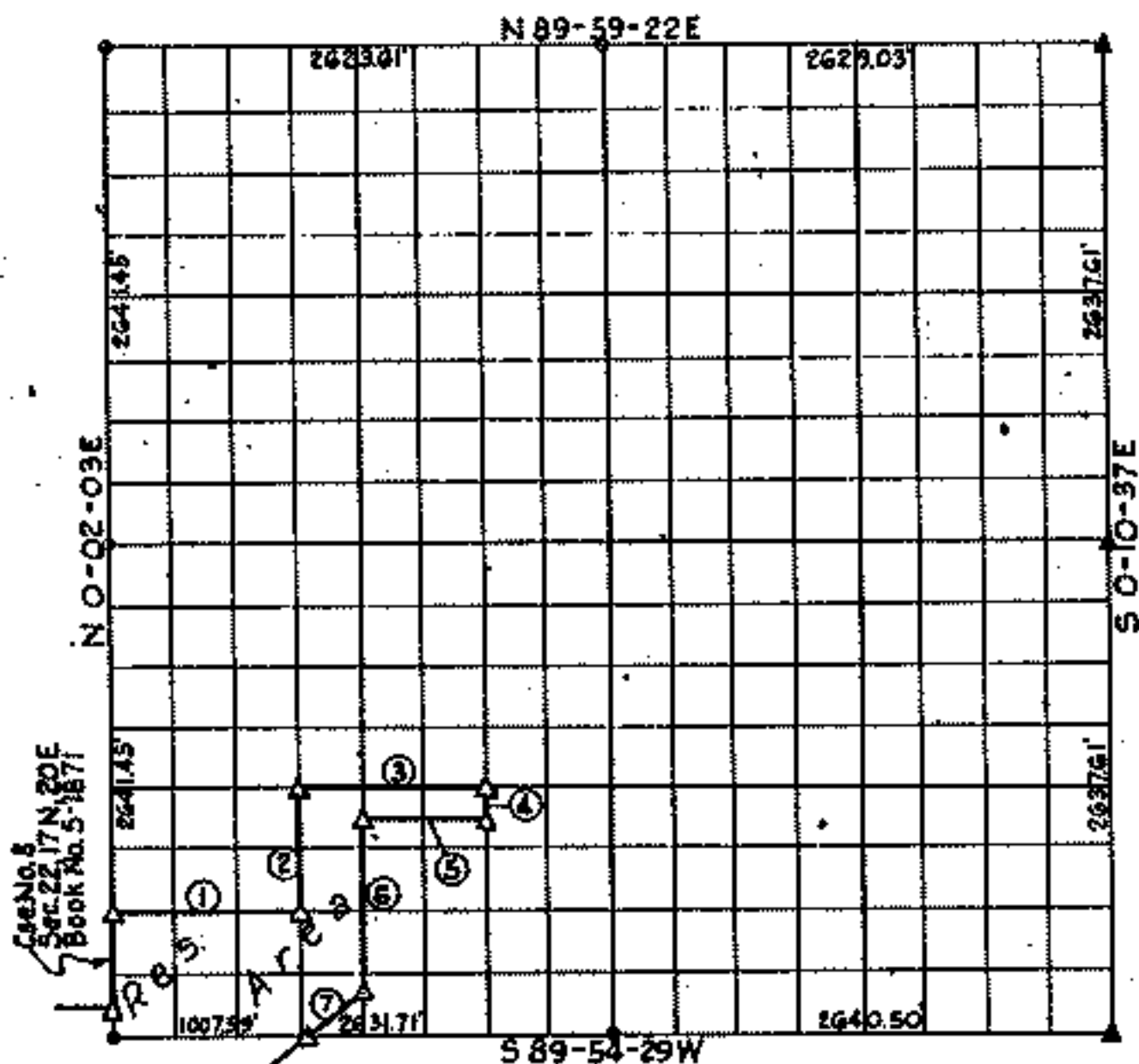


PARTIAL BOUNDARY SURVEYS
 FORT GIBSON LAKE,
 AREA "I"

Performed under Contract Number DACW56-73-C-0230

SEC. 23 T. 17N. R. 20E. COUNTY CHEROKEE



Course No.	Distance	Bearing	Course No.	Distance	Bearing
1	986.22	N 89° 55' 26" E			
2	760.29	N 00° 00' 05" E			
3	932.21	N 89° 55' 22" E			
4	131.21	S 00° 01' 52" W			
5	657.49	S 89° 55' 33" W			
6	921.35	S 00° 00' 35" E			
7	393.35	S 52° 35' 29" W			

Book No. 5-1872 Date: October, 1973

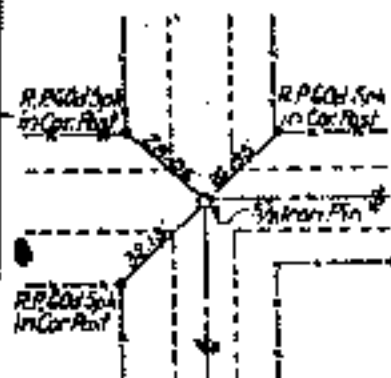
I, Charles J. Ankles, hereby certify that the above plat is a true and correct representation of the survey made in Section 23, T17N, R20E.

- LEGEND
- ▲ Monument
 - Original Stone
 - Iron Pin
 - ▲ Mon. by O.H.D.

Charles J. Ankles
 Registered Land Surveyor No. 35

FORT GIBSON LAKE
AREA 'I'
SECTION AND QUARTER SECTION CORNER
REFERENCES FOR
SECTION 23, T.17N., R.20E., CHEROKEE CO.

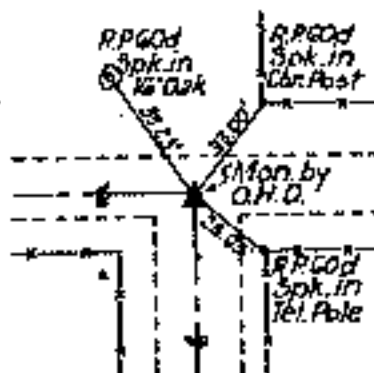
N.W. SECTION CORNER



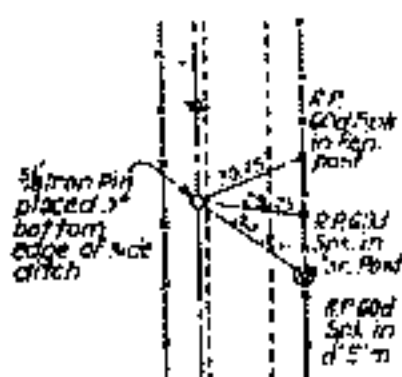
NO. 1/4 CORNER



N.E. SECTION CORNER



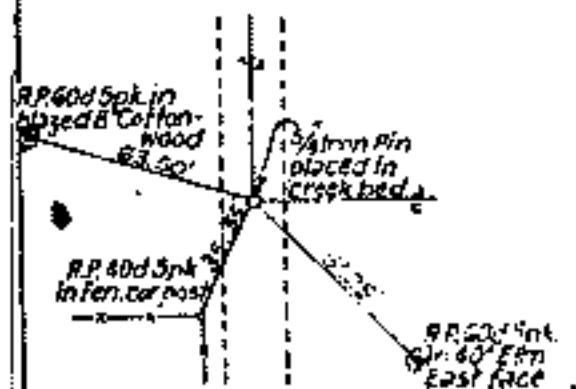
WEST 1/4 CORNER



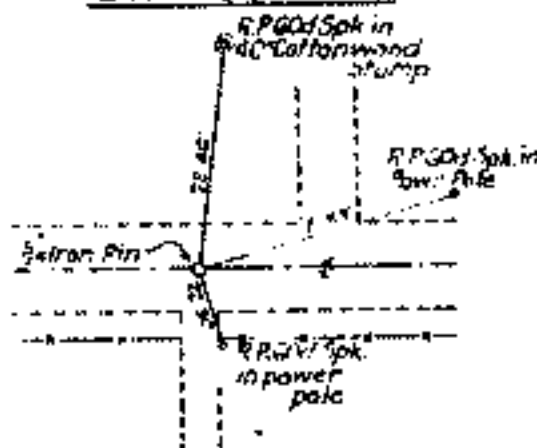
EAST 1/4 CORNER



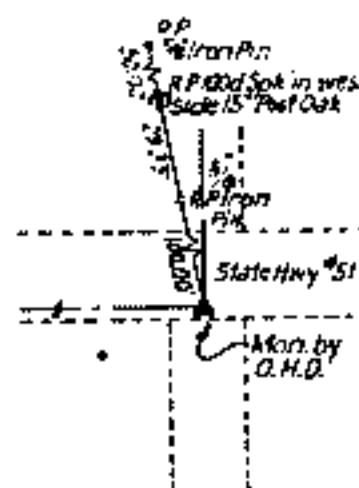
SW. SECTION CORNER



SO. 1/4 CORNER



S.E. SECTION CORNER



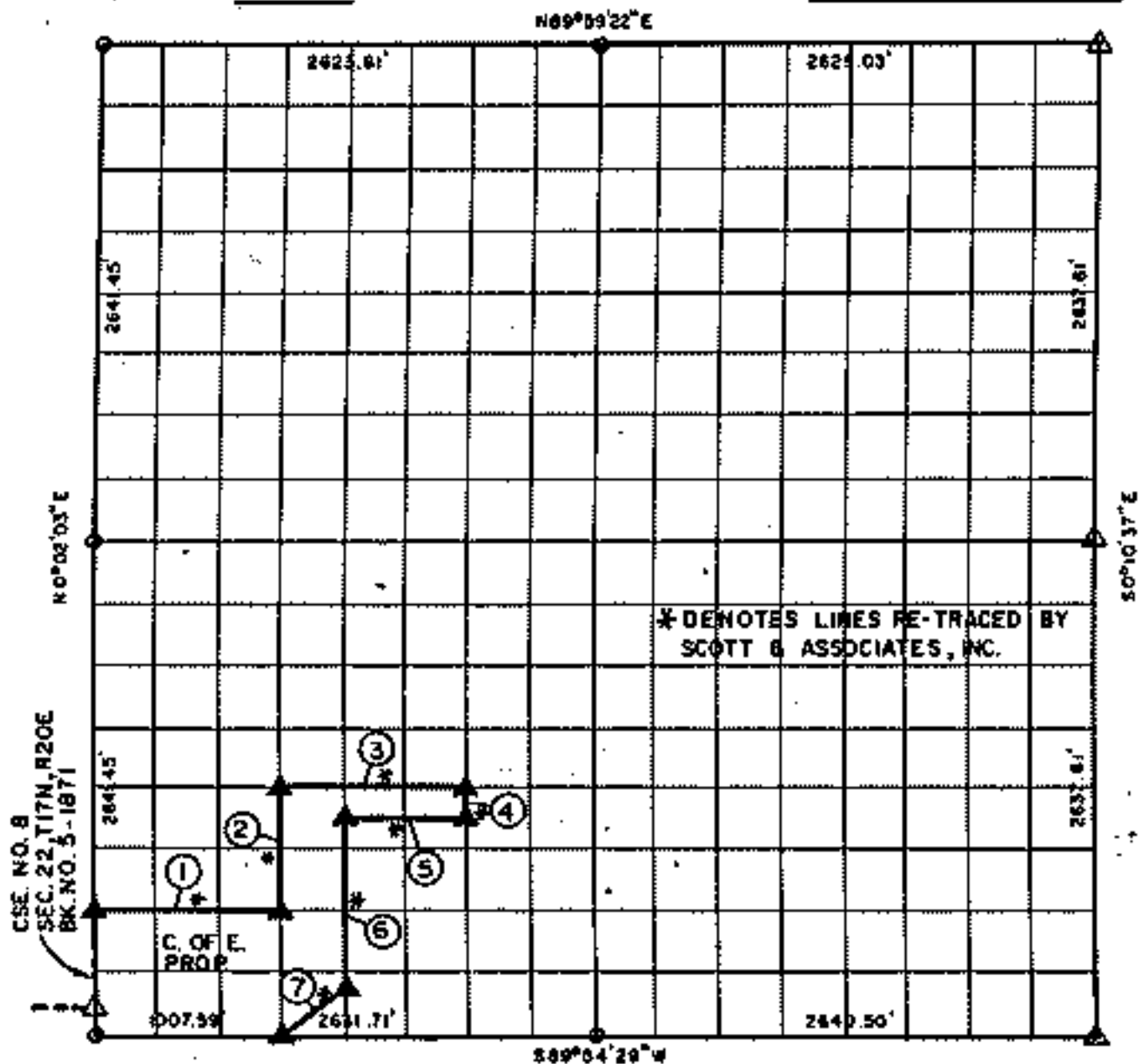
Scale: 1" = 50'
Date: June-October 1973
Field Book No. 5-1872

**PARTIAL BOUNDARY SURVEYS
FT. GIBSON LAKE OKLA.
SEC. 23 T-17 -N R-20 -E**

COUNTY CHEROKEE

D.O. NO. 0009

Performed Under Contract No. DACA 56-86-D-0041



Course No.	Distance	Bearing	Course No.	Distance	Bearing
* 1	986.51'	N 89° 55' 06\"/>			

Field Book No. 5-1872 Date 7/87

CERTIFICATE OF SURVEY
I hereby certify that the above plat is a true and correct representation of the survey shown on this certificate.
Basel E. Scott Jr.
BASEL E. SCOTT JR. L.S. 945

**SCOTT & ASSOCIATES, INC.
LAND SURVEYORS**

**U.S. ARMY CORPS OF ENGINEERS
TULSA DISTRICT**

— LEGEND —
 Δ MONUMENT
 ○ ORIGINAL CORNER
 ○ IRON PIN