

FORT GIBSON LAKE AREA "H"

GRAND RIVER, OKLAHOMA

Performed Under Contract Number DACW 56-72-G-0117

S.W. 1/4 Sec. 28

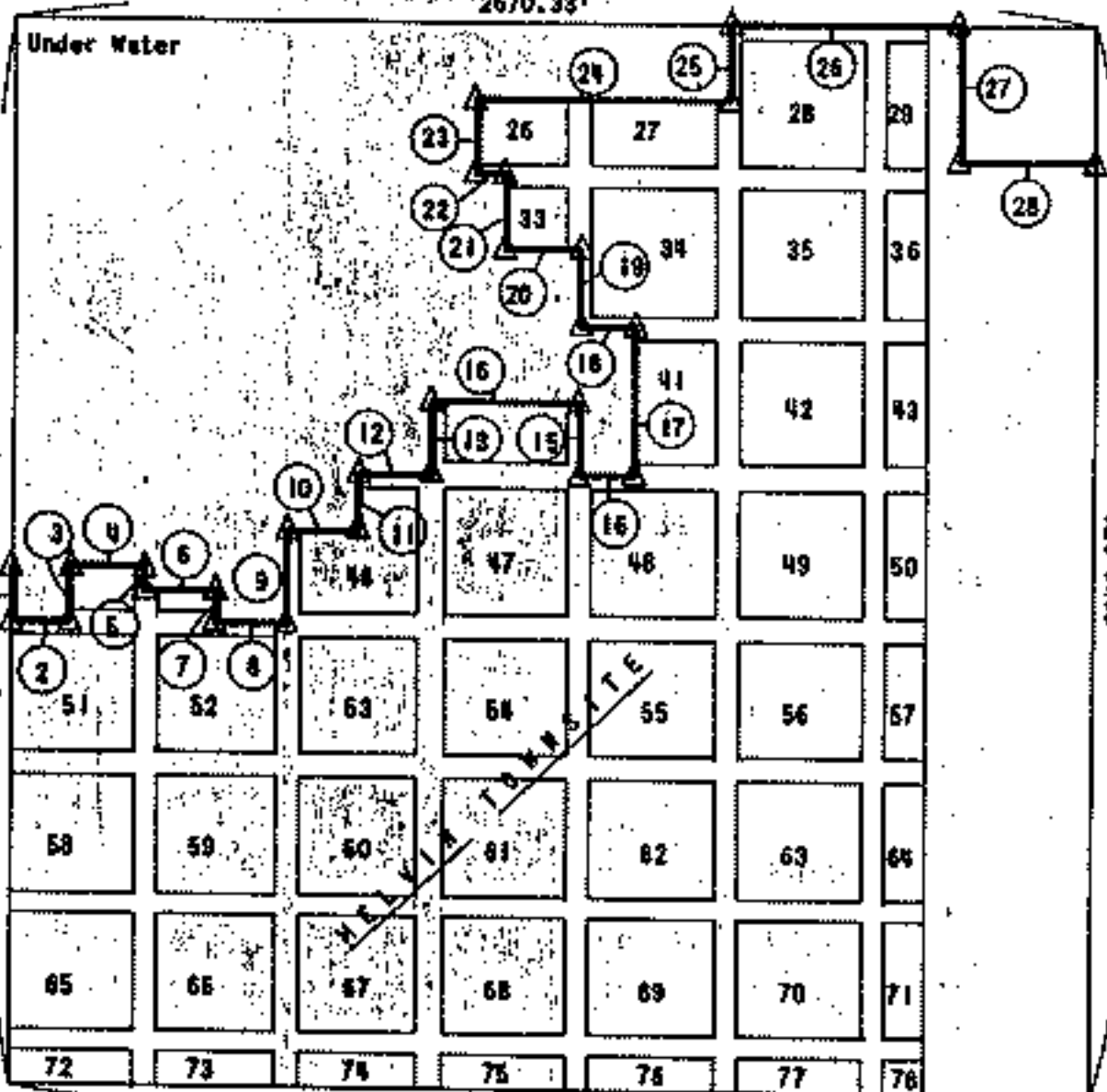
T 17 N

R 20 E

Cherokee County

S 89° 53' 07" E

2670.33'



2653.69'
N 0° 04' 59\" E

Center of Section

2643.07'
N 0° 06' 09\" N

2676.85'
S 89° 53' 22\" W

Course No.	Distance	Bearing	Course No.	Distance	Bearing
1	128.80'	N 00° 04' 59\" E	15	180.00'	N 00° 04' 59\" E
2	150.00'	N 89° 53' 22\" E	16	130.00'	N 89° 53' 22\" E
3	130.00'	N 00° 04' 59\" E	17	360.00'	N 00° 04' 59\" E
4	180.00'	N 89° 53' 22\" E	18	130.00'	N 89° 53' 22\" E
5	60.00'	N 00° 04' 59\" E	19	180.00'	N 00° 04' 59\" E
6	180.00'	N 89° 53' 22\" E	20	180.00'	N 89° 53' 22\" E
7	80.00'	N 00° 04' 59\" E	21	180.00'	N 00° 04' 59\" E
8	160.00'	N 89° 53' 22\" E	22	79.00'	N 89° 53' 22\" E
9	230.00'	N 00° 04' 59\" E	23	180.00'	N 00° 04' 59\" E
10	180.00'	N 89° 53' 22\" E	24	619.00'	N 89° 53' 22\" E
11	130.00'	N 00° 04' 59\" E	26	166.59'	N 00° 04' 59\" E
12	185.52'	N 89° 53' 22\" E	26	566.55'	S 89° 53' 07\" E
13	179.62'	N 00° 04' 59\" E	27	330.55'	S 00° 04' 41\" E
14	965.00'	N 89° 53' 22\" E	28	333.92'	S 89° 53' 48\" E

Certificate of Survey

Field Book No. 6-1843

Date: September 29, 1972

I hereby certify that the above plat is a true and correct representation of the survey made in Section 28, T 17 N, R 20E, Cherokee County, Oklahoma.

SULLIVAN & GILBERT, INC.
Consulting Engineers

Under the supervision of
U.S. ARMY ENGINEER DISTRICT, TULSA
CORPS OF ENGINEERS

LEGEND

- △ Monument
- Original Corner
- o Iron Pin
- Key, N/W Marker

[Signature]
REGISTERED LAND SURVEYOR L.S. #122

PARTIAL BOUNDARY SURVEY
FORT GIBSON LAKE AREA "H"

GRAND RIVER, OKLAHOMA

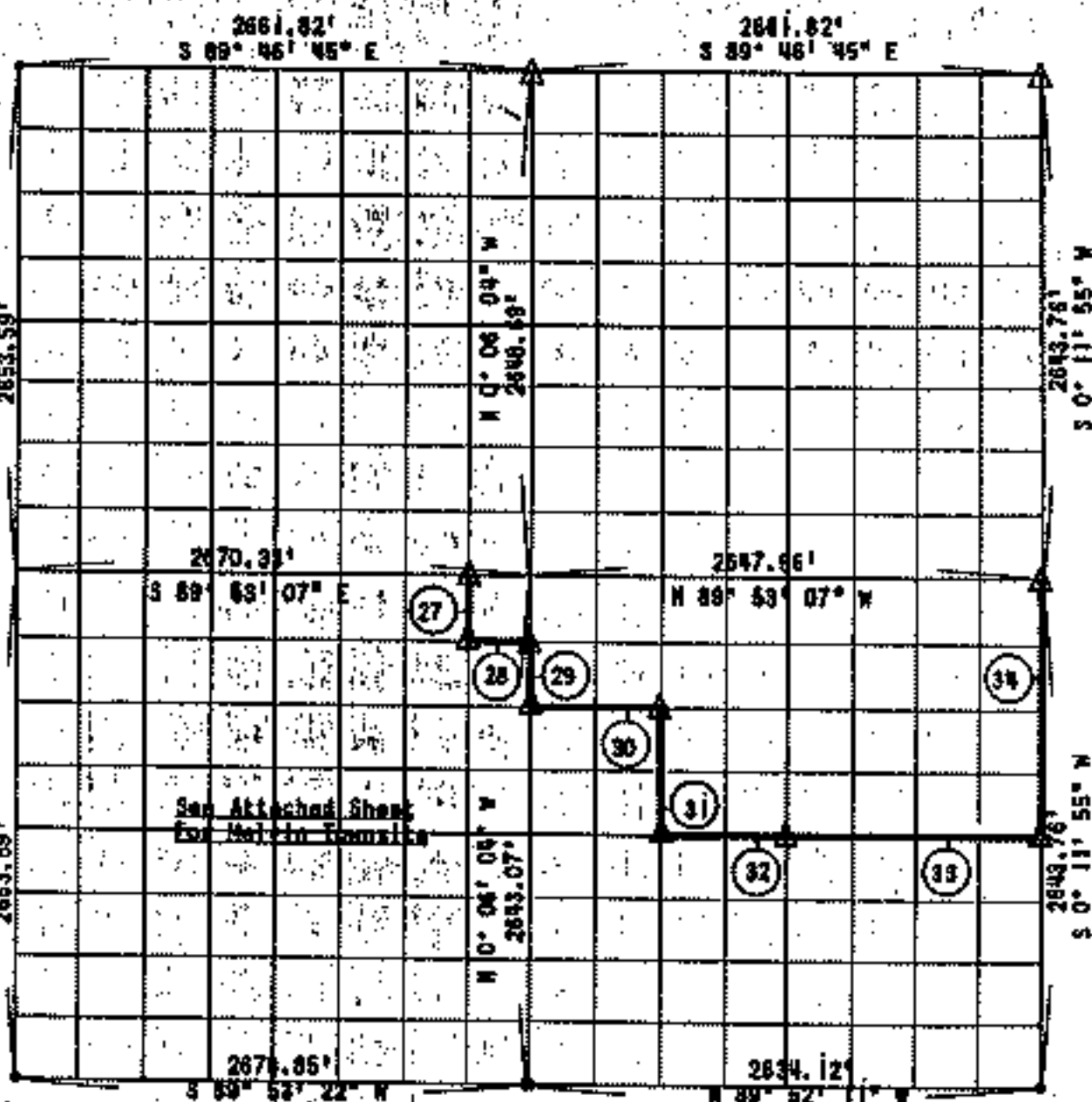
Performed Under Contract Number DACH 66-72-C-0117

Sec. 28

T 17 N

R 20 E

County: CHEROKEE



Course No.	Distance	Bearings
27	330.55'	S 0° 04' 51" E
28	333.92'	S 89° 54' 48" E
29	330.35'	S 0° 06' 06" E
30	361.12'	S 89° 52' 58" E
31	361.06'	S 0° 01' 34" E
32	360.28'	S 89° 52' 39" E
33	1320.52'	S 89° 52' 39" E
34	1321.58'	N 0° 11' 55" E

CERTIFICATE OF SURVEY

Field Book Number 5-1043

Date: September 29, 1972

I hereby certify that the above map is a true & correct representation of the survey made in Section 28, T 17 N, R 20 E, Cherokee County, Oklahoma.

SULLIVAN & GILBERT, INC.
Consulting Engineers

Under the supervision of

U.S. ARMY ENGINEER DISTRICT, TULSA
CORPS OF ENGINEERS

LEGEND

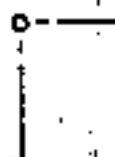
- ▲ Monument
- Original Corner
- Iron Pin
- ⊙ Nwy. E/W Marker

Richard A. Gilbert
REGISTERED LAND SURVEYOR, L.S. #122

FORT GIBSON LAKE
 GRAND RIVER, OKLAHOMA
 SECTION AND QUARTER SECTION CORNER
 REFERENCES FOR
 SECTION 28, T 17 N, R 20 E CHEROKEE COUNTY

E.W. SECTION CORNER

Bk. No. 5-1825



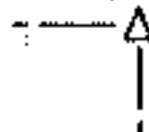
NORTH 1/2 CORNER

Bk. No. 5-1825

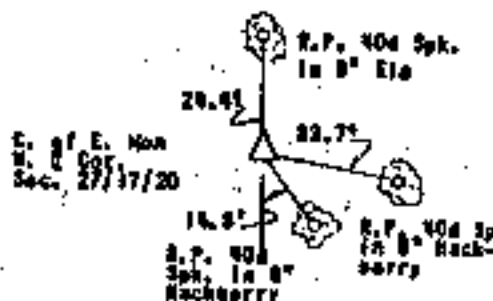


N.E. SECTION CORNER

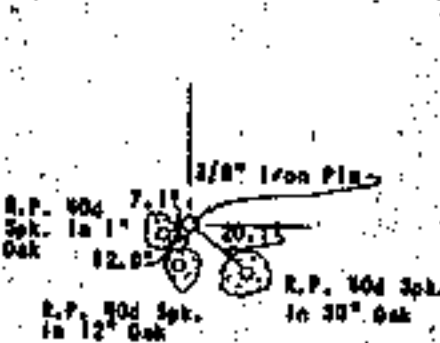
Bk. No. 5-1825



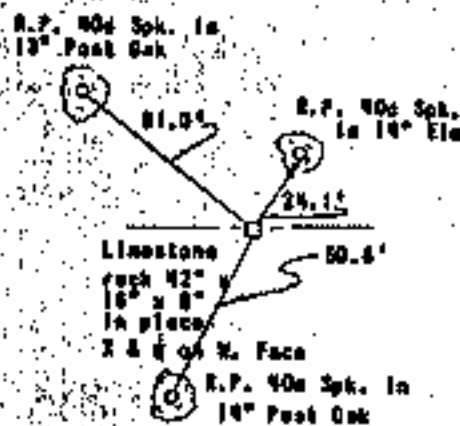
EAST 1/2 CORNER



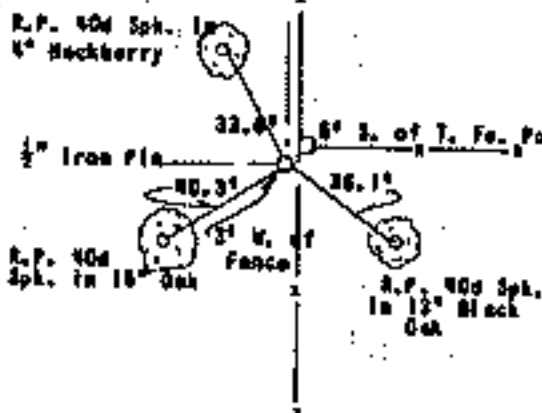
S.W. SECTION CORNER



SOUTH 1/2 CORNER



S.E. SECTION CORNER



Scale: 1" = 50'
 Date: September 29, 1972
 Field Book No. 5-1813