

PARTIAL BOUNDARY SURVEY

FORT GIBSON LAKE AREA "M"

GRAND RIVER, OKLAHOMA

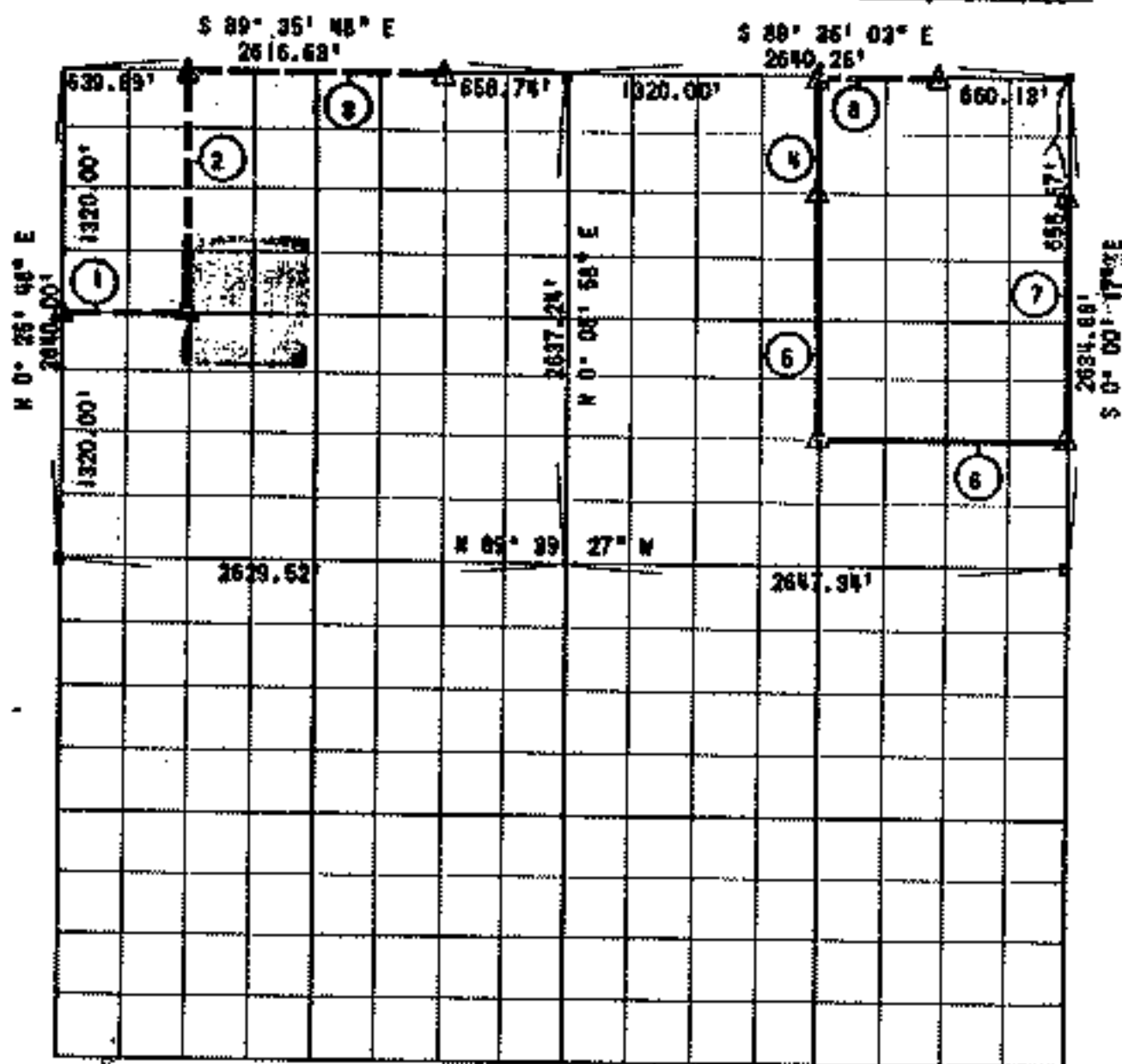
Performed Under Contract Number DACW 56-72-C-0117

Sec. 31

T 17 N

R 20 E

County: CHEROKEE



Course No.	Distance	Bearing
1	645.09'	S 89° 36' 19" E
2	1319.85'	N 0° 12' 18" E
3	1916.00'	S 89° 36' 48" E
4	659.23'	N 0° 04' 10" E
5	1316.73'	N 0° 04' 10" E
6	1322.70'	N 89° 39' 27" N
7	1317.39'	S 0° 00' 17" E
8	660.18'	S 89° 36' 03" E

CERTIFICATE OF SURVEY

Field Book No. 5-1085

Date: September 29, 1972

I hereby certify that the above plat is a true & correct representation of the survey made in Section 31, T 17 N, R 20 E, CHEROKEE County, Oklahoma.

SULLIVAN & GILBERT, INC.  
 Consulting Engineers  
 Under the supervision of  
 ARMY ENGINEER DISTRICT, TULSA  
 U.S. CORPS OF ENGINEERS

LEGEND

- △ Movement
- Original Corner
- Iron Pin
- Inv. &/N Marker

*[Signature]*  
 REGISTERED LAND SURVEYOR L.S. 6122

**FORT GIBSON LAKE**  
**GRAND RIVER, OKLAHOMA**  
**SECTION AND QUARTER SECTION CORNER**  
**REFERENCES FOR**  
**SECTION 31, T 17 N, R 20 E**      **CHEROKEE COUNTY**

**N.W. SECTION CORNER**  
 Book No. 5-1179

N.W. Corner in Water

**NORTH 1/4 CORNER**



**N.E. SECTION CORNER**  
 Book No. 5-1409

**WEST 1/4 CORNER**

Bk. No. 5-1179



**EAST 1/4 CORNER**

