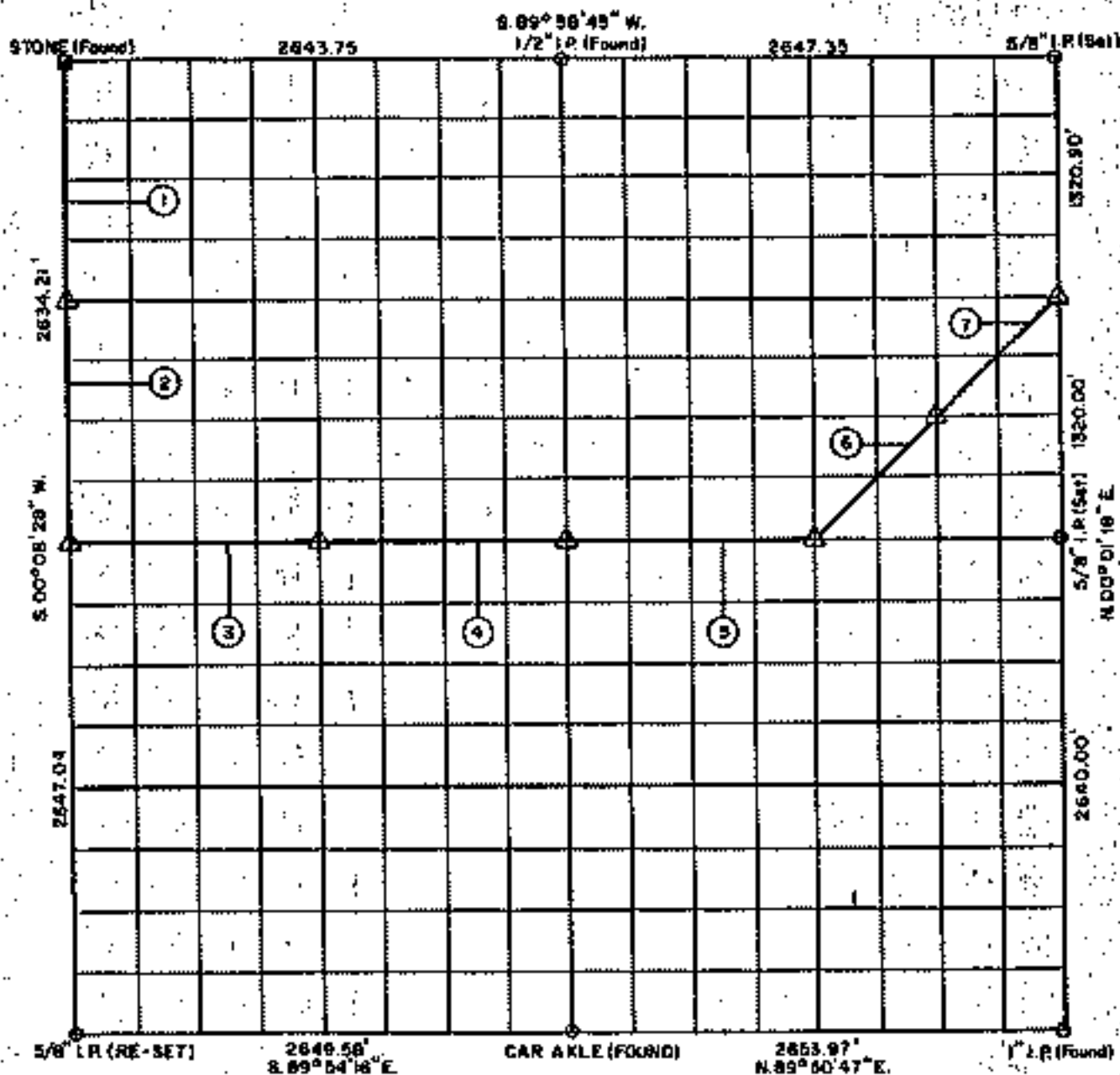


PARTIAL BOUNDARY SURVEYS

FORT GIBSON LAKE
GRAND RIVER, OKLAHOMA

Performed Under Contract Number DACW56-71-C-0108

SEC 2 T-18 - N R-18 - E COUNTY WAGONER



Course No.	Distance	Bearing	Course No.	Distance	Bearing
1	1314.18'	S. 00° 08' 28" W.			
2	1320.00'	S. 00° 08' 28" W.			
3	1323.33'	S. 89° 57' 07" E.			
4	1323.33'	S. 89° 57' 07" E.			
5	1326.32'	S. 89° 57' 07" E.			
6	935.05'	N. 45° 09' 01" E.			
7	935.05'	N. 45° 09' 01" E.			

CERTIFICATE OF SURVEY Field Book No. 5-1816 Date: MARCH, 1971

I HEREBY CERTIFY THAT THE ABOVE PLAT IS A TRUE AND CORRECT REPRESENTATION OF THE SURVEY MADE IN SECTION 2 T-18 N. R-18 E. WAGONER COUNTY, OKLAHOMA.

E. H. SCHMIDT CORPORATION
Under the Supervision of

LEGEND
A MONUMENT