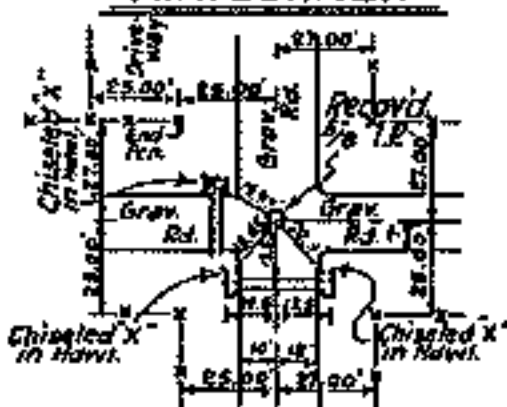


OKLAHOMA

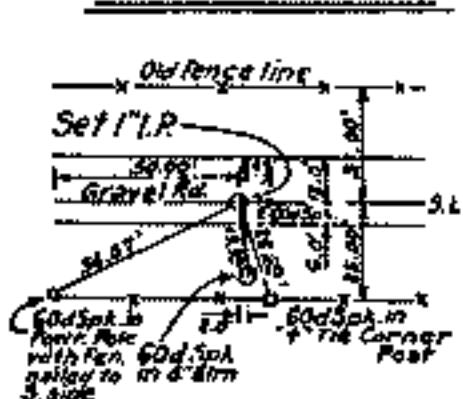
SECTION AND QUARTER SECTION CORNER REFERENCES FOR

SEC. 34 T. 18N., R. 18E., COUNTY WAGONER

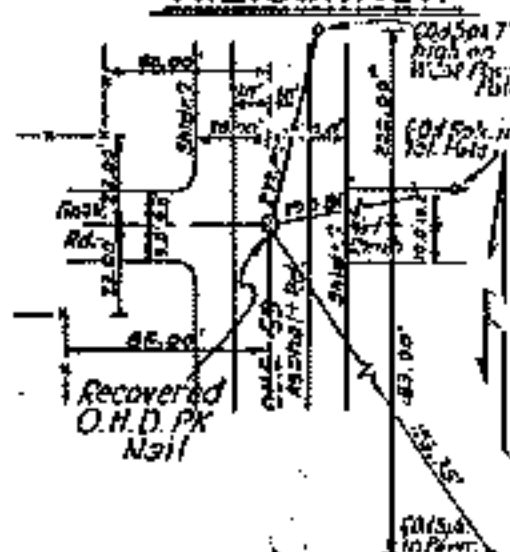
N.W. CORNER



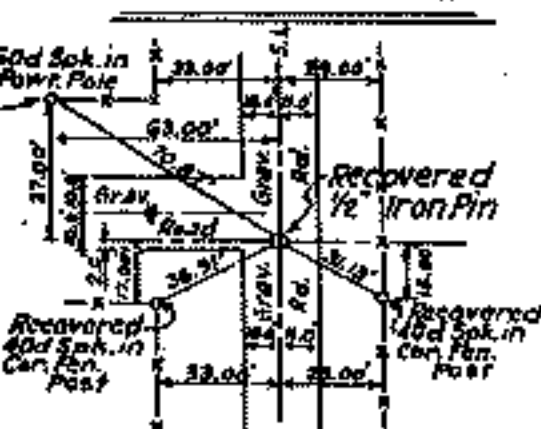
NORTH 1/4 COR.



N.E. CORNER



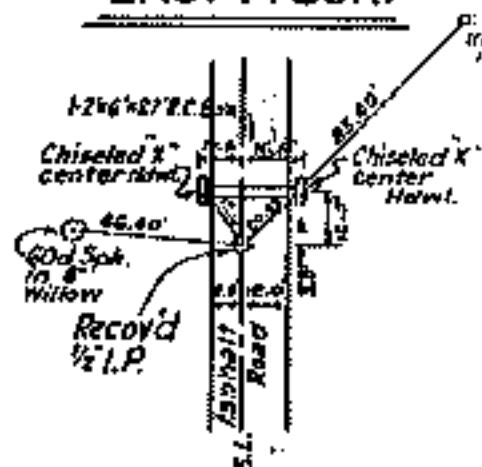
WEST 1/4 COR.



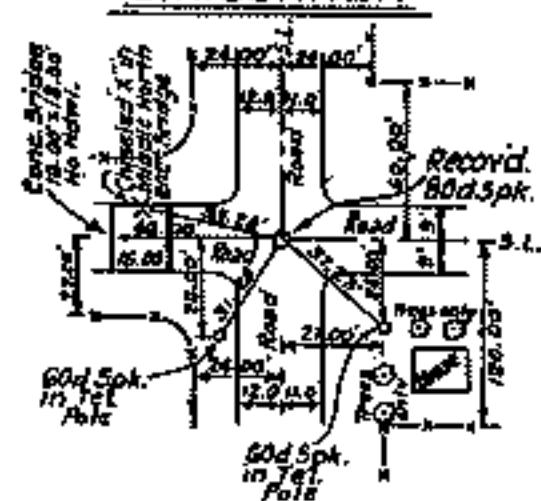
Note:-

All Section Corners and 1/4 Section Corners of this Section 34 T.18N., R.18E., Wagoner County, will have O.H.D. Conc. Mon. with Brass Cap set at these points at a later date, as new four lane U.S.G.9 survey crosses this section.

EAST 1/4 COR.



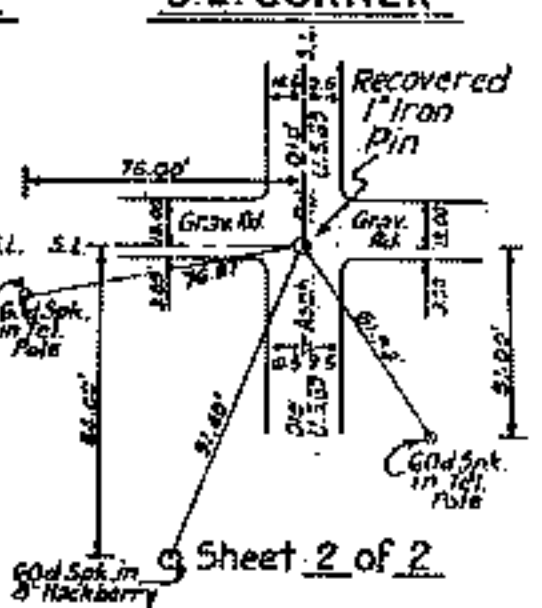
S.W. CORNER



SOUTH 1/4 COR.



S.E. CORNER



Certificate of Survey

I hereby certify that the above plat is a true and correct representation of the survey made in Section 34 T.18N., R.18E., Wagoner County, Oklahoma.

Charles J. Finklea
 Charles J. Finklea
 Registered Land Surveyor No. 35

Scale: - 1" = 50'
 Date: - Feb. July, 1917
 Field Book No. 5-1

Legend

- △ Monument
- Orig. Corner
- Iron Pin
- △ Mon. by O.H.