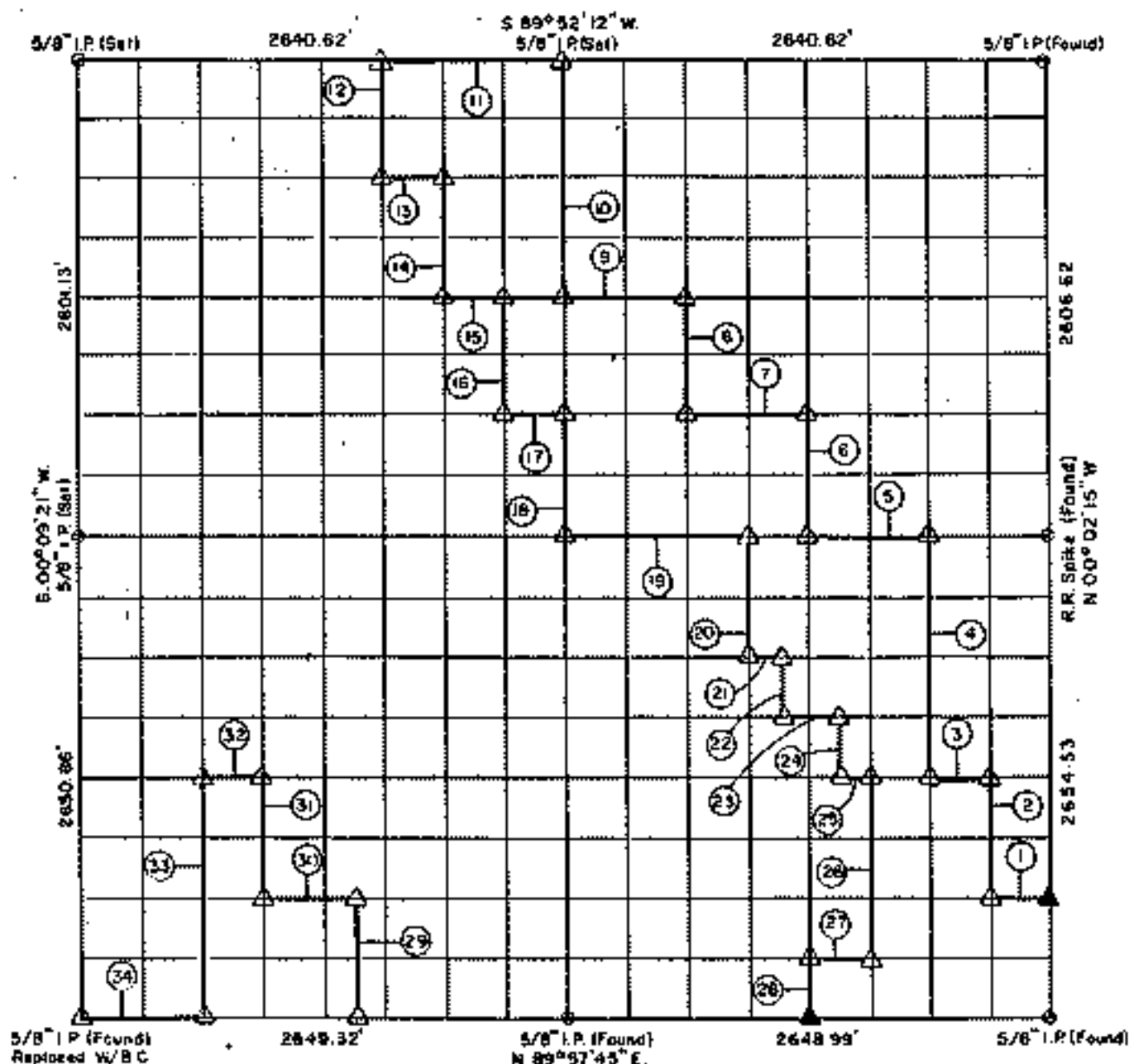


PARTIAL BOUNDARY SURVEYS

FORT GIBSON LAKE
GRAND RIVER, OKLAHOMA

Performed Under Contract Number DACW56-71-C-0108

SEC 4 T-18 - N R-18 - E COUNTY WAGONER



Course No.	Distance	Bearing	Course No.	Distance	Bearing
1	330.99'	S. 89° 57' 12" W.	14	639.88'	S. 00° 04' 56" W.
2	663.58'	N. 00° 01' 32" W.	15	330.35'	N. 89° 53' 27" E.
3	330.86'	S. 89° 56' 40" W.	16	661.82'	S. 00° 04' 12" W.
4	1327.04'	N. 00° 00' 49" W.	17	330.48'	N. 89° 54' 31" E.
5	661.20'	S. 89° 55' 35" W.	18	661.92'	S. 00° 03' 27" W.
6	662.34'	N. 00° 00' 36" E.	19	991.80'	N. 89° 55' 35" E.
7	660.92'	S. 89° 54' 31" W.	20	663.34'	S. 00° 01' 18" E.
8	662.13'	N. 00° 02' 02" E.	21	165.37'	N. 89° 56' 07" E.
9	660.64'	S. 89° 53' 27" W.	22	331.68'	S. 00° 00' 56" W.
10	1280.03'	N. 00° 03' 27" E.	23	330.80'	N. 89° 56' 23" E.
11	990.24'	S. 89° 52' 12" W.	24	331.72'	S. 00° 00' 14" W.
12	639.82'	S. 00° 05' 40" W.	25	165.43'	N. 89° 56' 40" E.
13	330.21'	N. 89° 52' 49" E.	26	995.19'	S. 00° 00' 07" E.

CERTIFICATE OF SURVEY

I HEREBY CERTIFY THAT THE ABOVE PLAT IS A TRUE AND CORRECT REPRESENTATION OF THE SURVEY MADE IN SECTION 4, T. 18 N., R. 18 E., WAGONER COUNTY, OKLAHOMA.



H. SCHMIDT CORPORATION

Under the Supervision of

ENGINEER DISTRICT, TULSA
CORPS OF ENGINEERS
SHEET 1 of 2

LEGEND

- Δ MONUMENT
- ORIGINAL CORNER
- IRON PIN
- * COMPUTED DISTANCE

Field Book No. 5-1819

Date: MARCH, 1971

Eugene R. Janway

