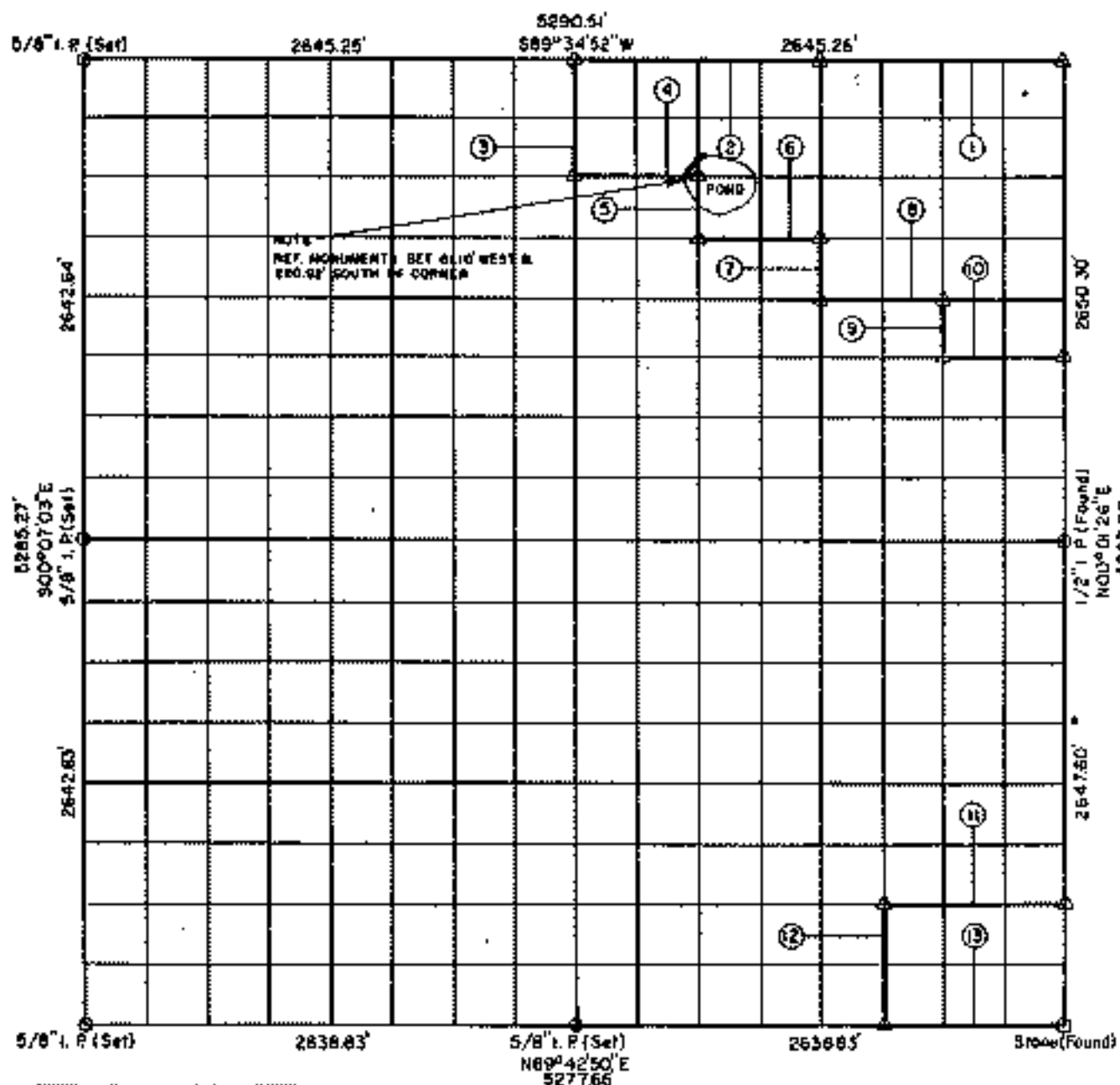


PARTIAL BOUNDARY SURVEYS

FORT GIBSON LAKE
GRAND RIVER, OKLAHOMA

Performed Under Contract Number DACW56-71-C-0108

SEC 8 T-18-N R-18-E COUNTY WAGONER



Course No.	Distance	Bearing	Course No.	Distance	Bearing
1	1322.63'	S89°34'52\"W			
2	1322.63'	S89°34'52\"W			
3	661.61'	S00°02'48\"E			
4	661.10'	N89°36'06\"E			
5	330.92'	S00°01'44\"E			
6	661.00'	N89°36'43\"E			
7	331.05'	S00°00'41\"E			
8	660.90'	N89°37'21\"E			
9	331.17'	S00°00'23\"W			
10	660.80'	N89°37'58\"E			
11	989.85'	S89°42'05\"W			
12	661.57'	S00°00'09\"E			
13	989.56'	N89°42'50\"E			

CERTIFICATE OF SURVEY

Field Book No. 5-1818 Date: MARCH, 1971

I HEREBY CERTIFY THAT THE ABOVE PLAT IS A TRUE AND CORRECT REPRESENTATION OF THE SURVEY MADE IN SECTION 8, T-18-N, R-18-E, WAGONER COUNTY, OKLAHOMA.



H. SCHMIDT CORPORATION
Under the Supervision of
ENGINEER DISTRICT, TULSA
CORPS OF ENGINEERS
SHEET 1 of 1

- LEGEND**
- ▲ MONUMENT
 - ORIGINAL CORNER
 - IRON PIN
 - * COMPUTED DISTANCE

Eugene R. Jarman
REGISTERED LAND SURVEYOR, OKLAHOMA