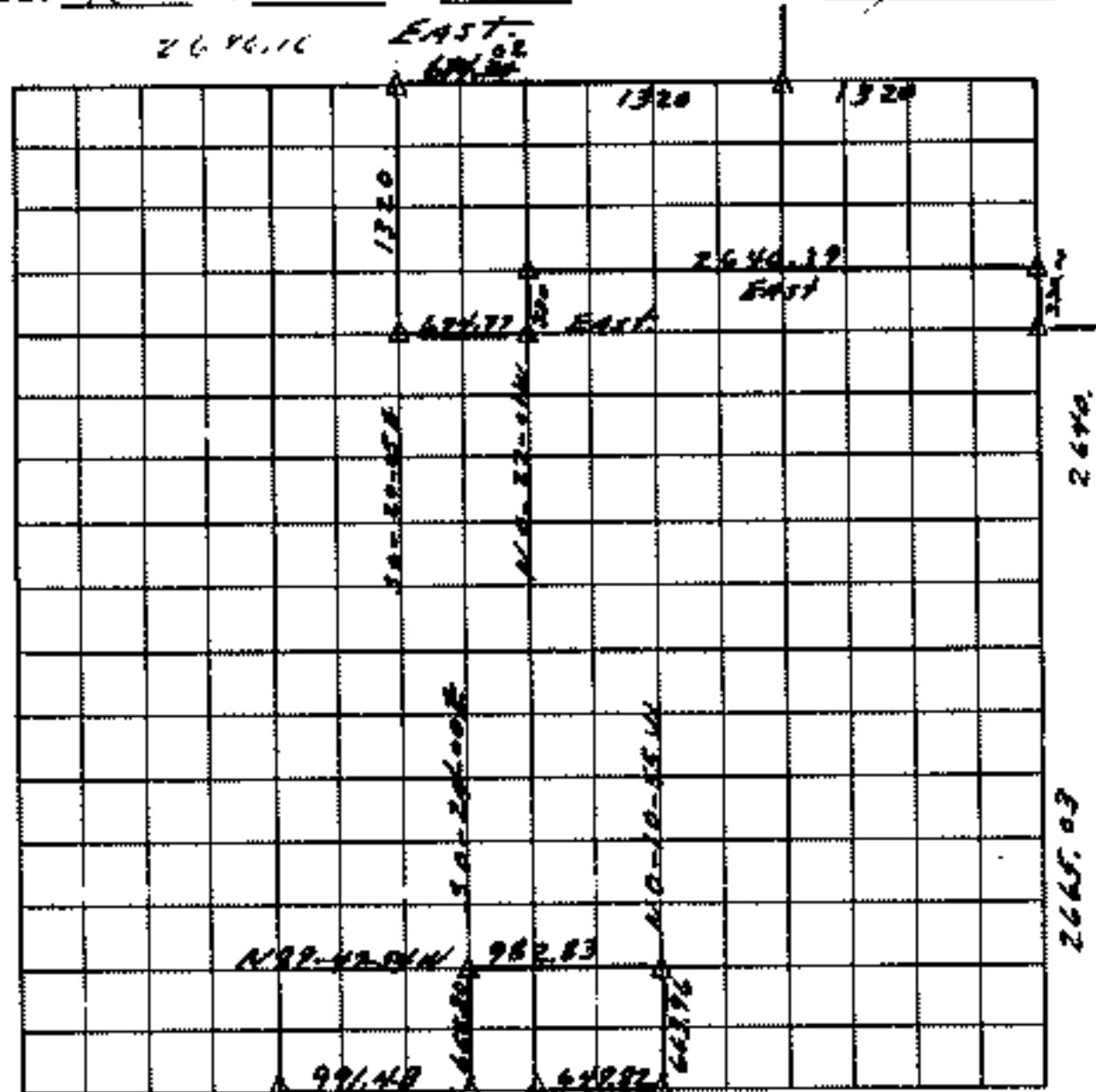


BEARINGS ARE ASSUMED.

SEC 18 T 12N R 19E

COUNTY Missouri



Course No	Distance	Bearing	Course No.	Distance	Bearing

Field Book No. _____ Date _____

LEGEND

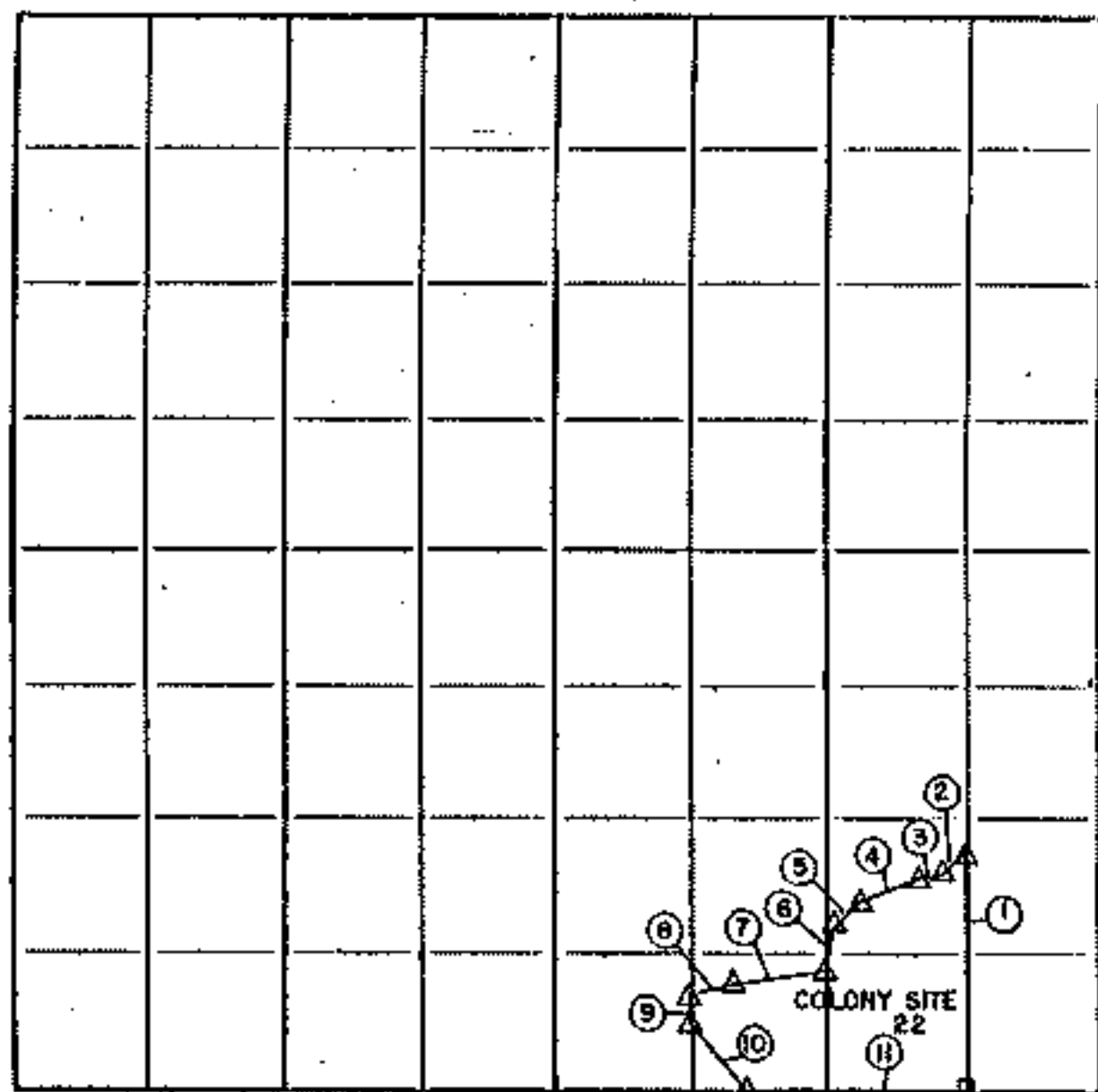
- M MONUMENT
- C ORIGINAL CORNER
- o IRON PIN

SHEET of

PARTIAL BOUNDARY SURVEYS
 FT. GIBSON LAKE
 OKLAHOMA

Performed Under Contract Number DACW 58-85-G-0127

SW/4 SEC. 18, T. 18 N., R. 19 E., COUNTY WAGONER



Course No.	Distance	Bearing	Course No.	Distance	Bearing
1	560.20'	NORTH			
2	71.30'	S 43° 28' W			
3	63.80'	S 81° 38' W			
4	151.30'	S 67° 21' W			
5	83.70'	S 45° 12' W			
6	92.10'	S 08° 09' W			
7	218.50'	S 81° 49' W			
8	95.60'	S 81° 18' W			
9	59.50'	S 06° 07' E			
10	197.20'	S 28° 40' E			
11	533.30'	S 88° 39' E			

Field Book No. 5-2005 Date 8-7-85

SCOTT & ASSOCIATES, INC.
 Engineering & Surveying

For
 U.S. ARMY ENGINEER DISTRICT, TULSA
 COMPS OF ENGINEERS

▲ MONUMENT
 ○ ORIGINAL CORNER
 ○ IRON PIN
 44/1 11 18

