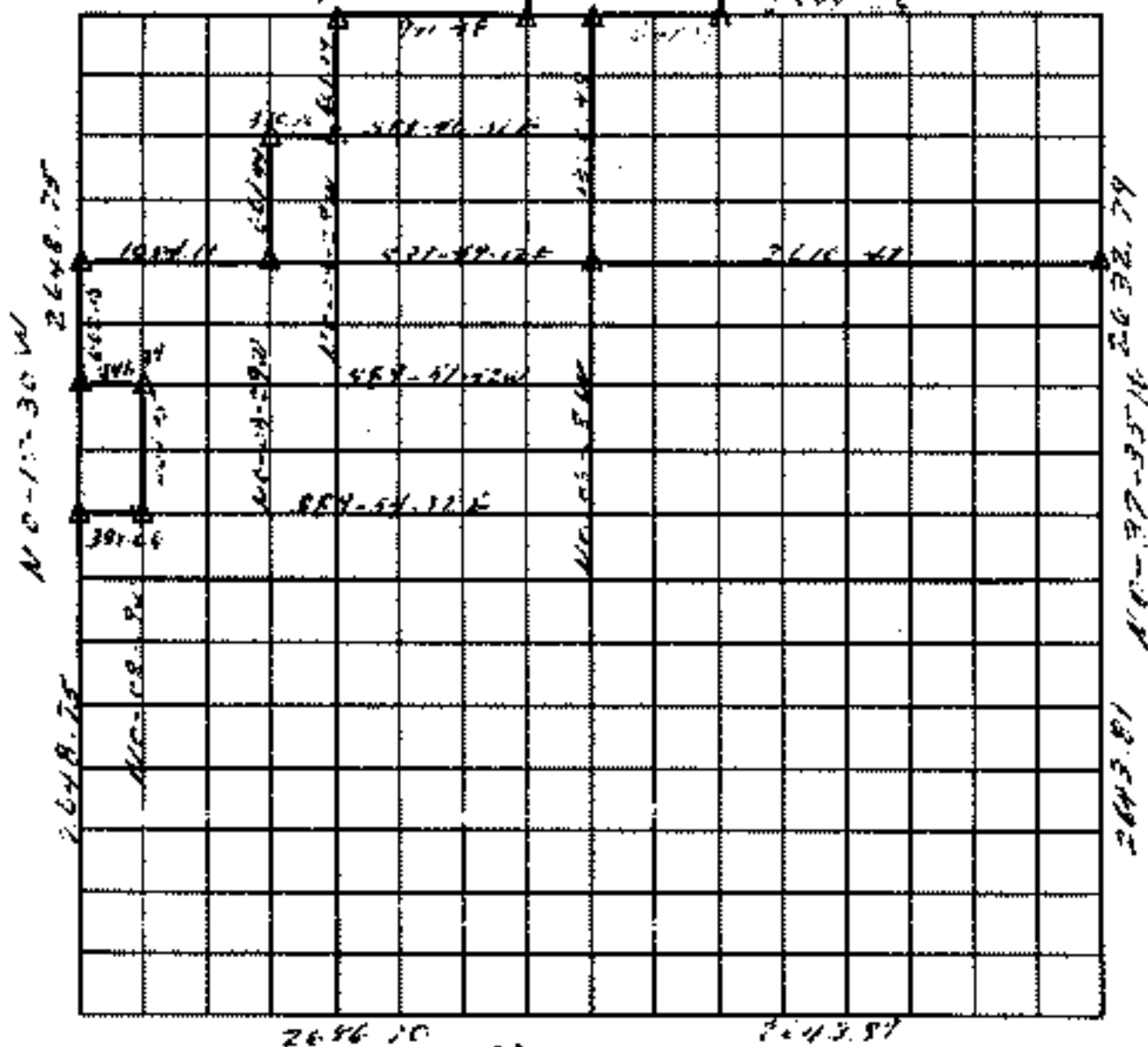


RECORD BOUNDARY PLAT

FT. GIBSON LAKE

SEC 19 T 18 N R 15 E COUNTY ILLINOIS

*1/2 SECTION 19 T18N R15E
2 1/2 ACRES 182-48-2711 2577.16*



Course No.	Distance	Bearing	Course No.	Distance	Bearing

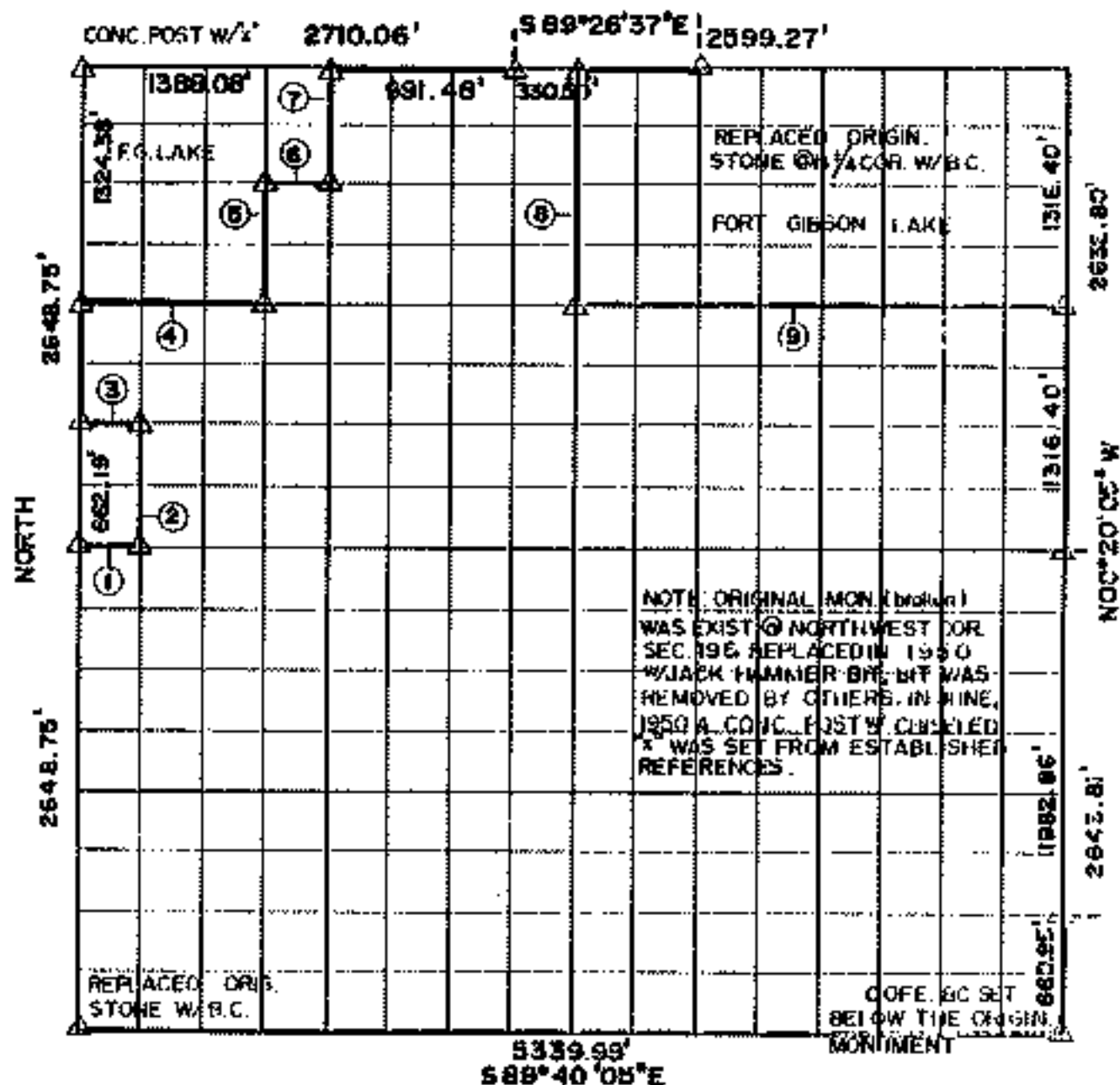
Field Book No. _____ Date _____

- LEGEND**
- ▲ MONUMENT
 - ORIGINAL CORNER
 - IRON PIN

RECORD BOUNDARY PLAT

LAKE FORT GIBSON, OKLAHOMA

SEC 19 T 18 N R 19 E COUNTY WAGONER



Course No.	Distance	Bearing	Course No.	Distance	Bearing
1	389.66	S 89° 37' 02" E			
2	661.87	N 00° 08' 54" E			
3	391.39	N 89° 34' 22" W			
4	1054.11	S 89° 31' 42" E			
5	661.44	N 00° 09' 01" E			
6	330.71	S 89° 29' 02" E			
7	661.56	N 00° 08' 4" E			
8	1321.39	S 00° 08' 4" W			
9	2602.36	S 89° 31' 42" E			

NOTE: MONUMENTS IN FIELD ARE DESCRIBED BY SECTIONAL SUBDIVISION NOT COURSES AS DEPICTED BY THIS PLAT. ALL BEARINGS ARE UNIQUE & ASSUMED FOR THIS PLAT.

OCT. 1954

Field Book No. 5-1232, 1171 Date Aug., 1950

SURVEY PERFORMED BY THE
CORPS OF ENGINEERS, TULSA DISTRICT
PLATS PREPARED BY
ENTZ ENGINEERING & ASSOCIATES INC. AND
HUFFMAN SURVEYING CO., INC.

LEGEND
 * MONUMENT
 B ORIGINAL CORNER
 C MON. PIN