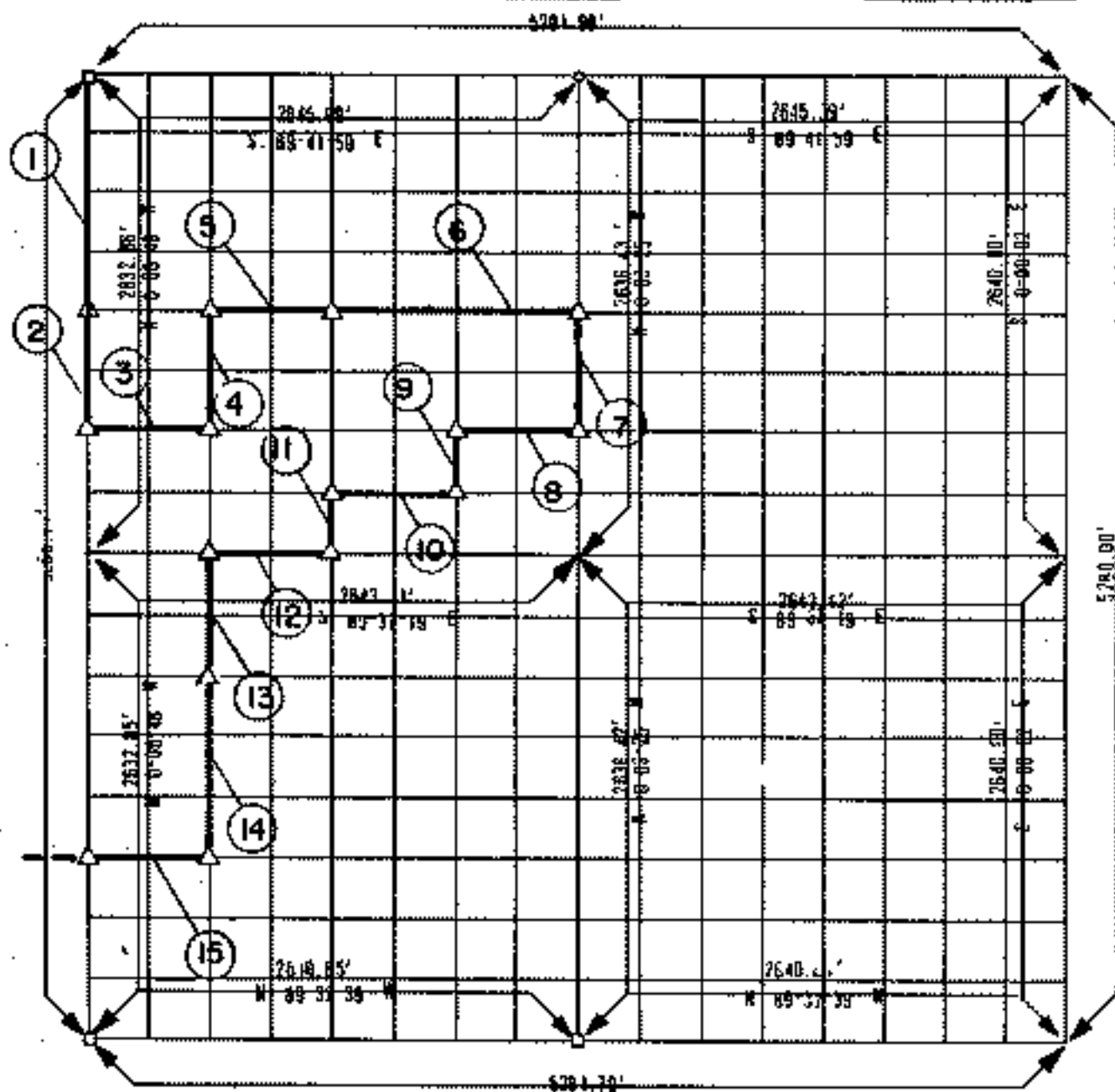


2-171

PARTIAL BOUNDARY SURVEYS FT. GIBSON RESERVOIR GRAND RIVER, OKLAHOMA

Performed Under Contract Number DACW56-70-C-0108

SEC 24 T 18-N R 19-E COUNTY WAGONER



Course No.	Distance	Bearing	Course No.	Distance	Bearing
1	1316.43	S 0°-00'-48" E	14	987.85	S 0°-05'-57" E
2	658.21	S 0°-08'-46" E	15	888.45	N 89°-34'-24" W
3	681.02	S 89°-38'-30" E			
4	658.44	N 0°-05'-57" W			
5	681.38	S 89°-39'-40" E			
6	1322.35	S 89°-38'-48" E			
7	858.11	S 0°-03'-25" E			
8	681.02	N 89°-38'-30" W			
9	329.44	S 0°-04'-15" E			
10	680.83	N 89°-37'-55" W			
11	79.33	S 11°-05'-08" E			
12	180.85	N 89°-37'-20" W			
13	858.44	S 0°-05'-51" E			

CERTIFICATE OF SURVEY Field Book No. 5-1809 Date SEPT. 1970

I HEREBY CERTIFY THAT THE ABOVE PLAT IS A TRUE AND CORRECT REPRESENTATION OF THE SURVEY MADE ON SECTION 24, T. 18-N., R. 19-E., WAGONER COUNTY, OKLAHOMA

ARKANSAS BASIN SURVEYORS INC.
Under the Supervision of

U.S. ARMY ENGINEER DISTRICT, TULSA
CORPS OF ENGINEERS

LEGEND
 * MONUMENT
 O ORIGINAL CORNER
 □ IRON PIN