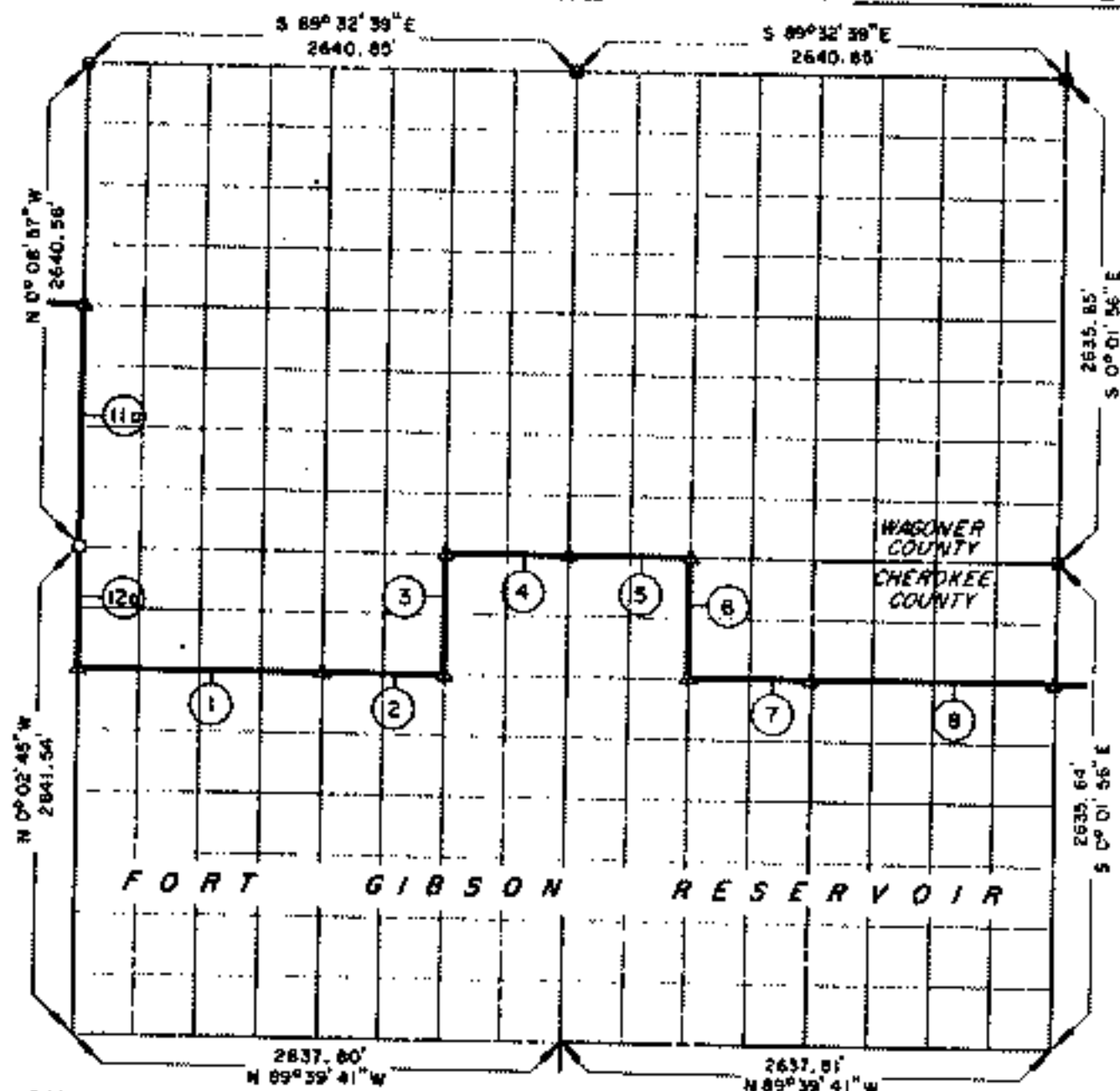


**PARTIAL BOUNDARY SURVEYS
FORT GIBSON RESERVOIR
GRAND RIVER, OKLAHOMA**

Performed Under Contract Number DACW 56-70-C

SEC. 25 T-18-N R-19-E COUNTY WAGONER & CHEROKEE



Course No.	Distance	Bearing	Course No.	Distance	Bearing
11a *	1320.28	S 0° 08' 57" E			
12a *	660.38	S 0° 02' 45" E			
1	1318.58	S 89° 36' 46" E			
2	659.29	S 89° 36' 46" E			
3	659.85	N 0° 03' 36" W			
4	659.23	S 89° 35' 50" E			
5	659.84	S 89° 35' 50" E			
6	659.48	S 0° 03' 23" E			
7	859.74	S 89° 36' 46" E			
8	1319.47	S 89° 36' 46" E			
			* See	Sec. 26, T-18-N, R-19-E Plat	

Field Book No. 5-1801 Date 7-10-70

K. N. COX & ASSOCIATES - ENGINEERS
Under the Supervision of
U.S. ARMY ENGINEER DISTRICT, TULSA
CORPS OF ENGINEERS

LEGEND
A MONUMENT
B ORIGINAL CORNER
C IRON PIN

CERTIFICATE OF SURVEY

WHEREAS IT IS THAT THE ABOVE PLAT IS A TRUE AND CORRECT REPRESENTATION OF THE SURVEY MADE IN SECTION 25, T-18-N R-19-E, WAGONER & CHEROKEE COUNTIES, OKLAHOMA.