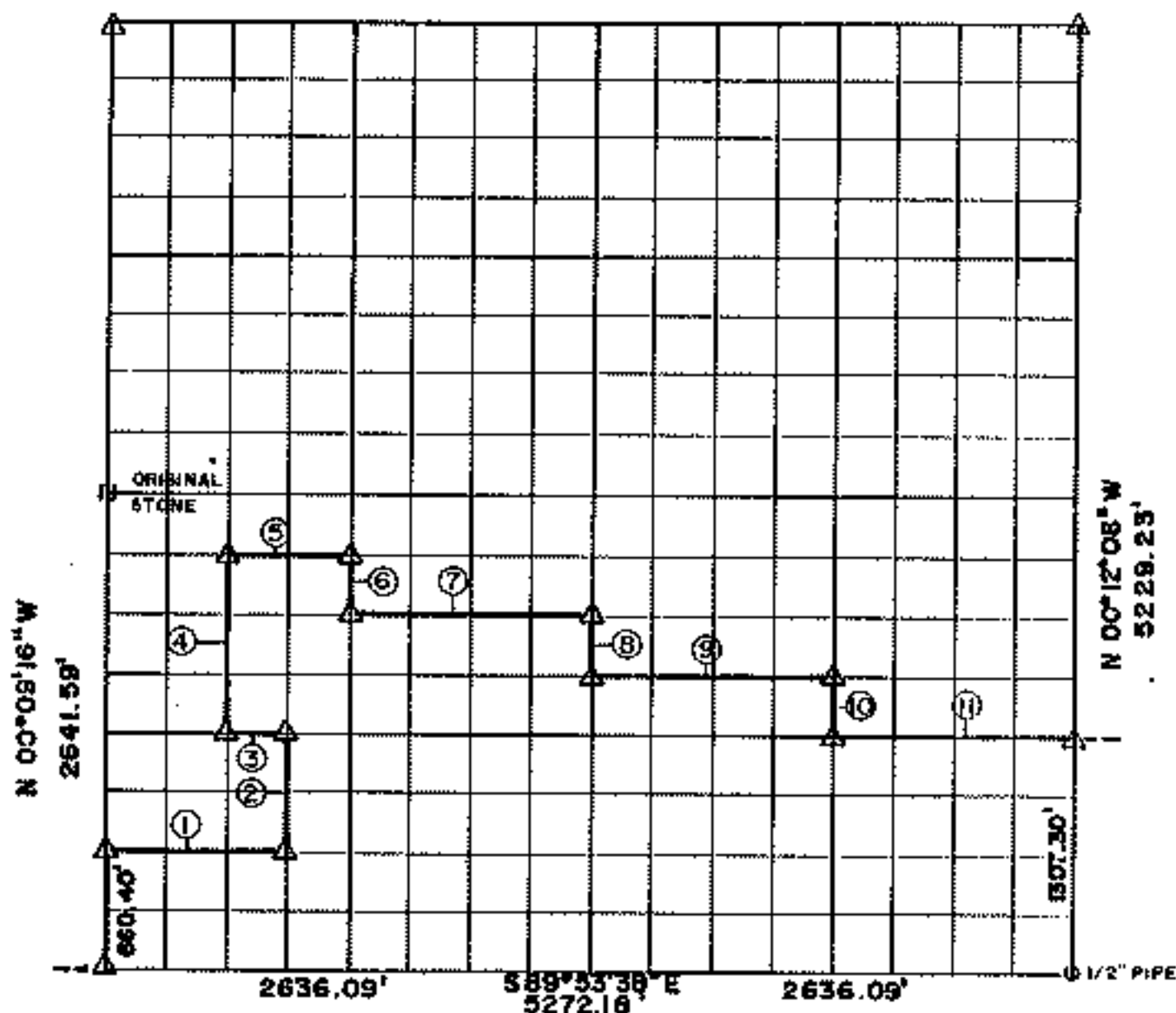


RECORD BOUNDARY PLAT

LAKE FORT GIBSON, OKLAHOMA

SEC 28 T 19N R 19E

COUNTY WAGONER



Course No.	Distance	Bearing	Course No.	Distance	Bearing
1	989.44'	S 89°49'14" E			
2	659.14'	N 00°09'48" W			
3	329.45'	N 89°44'50" W			
4	989.34'	N 00°09'37" W			
5	658.80'	S 89°38'14" E			
6	329.36'	S 00°09'59" E			
7	1317.66'	S 89°40'26" E			
8	329.36'	N 00°13'01" W			
9	1317.72'	N 89°42'38" W			
10	327.87'	N 00°11'25" W			
11	1317.79'	N 89°44'50" W			

NOTE: MONUMENTS IN FIELD ARE DESCRIBED BY SECTIONAL SUBDIVISION NOT COURSES AS DEPICTED BY THIS PLAT. ALL BEARINGS ARE UNIQUE & ASSUMED FOR THIS SECTION.

SEPT. 1984

Field Book No. 5-1173

Date SEPT. 1949

SURVEY PERFORMED BY THE
CORPS OF ENGINEERS, TULSA DISTRICT
PLATS PREPARED BY
ENTZ ENGINEERING & ASSOCIATES INC. AND
HUFFMAN SURVEYING CO., INC.

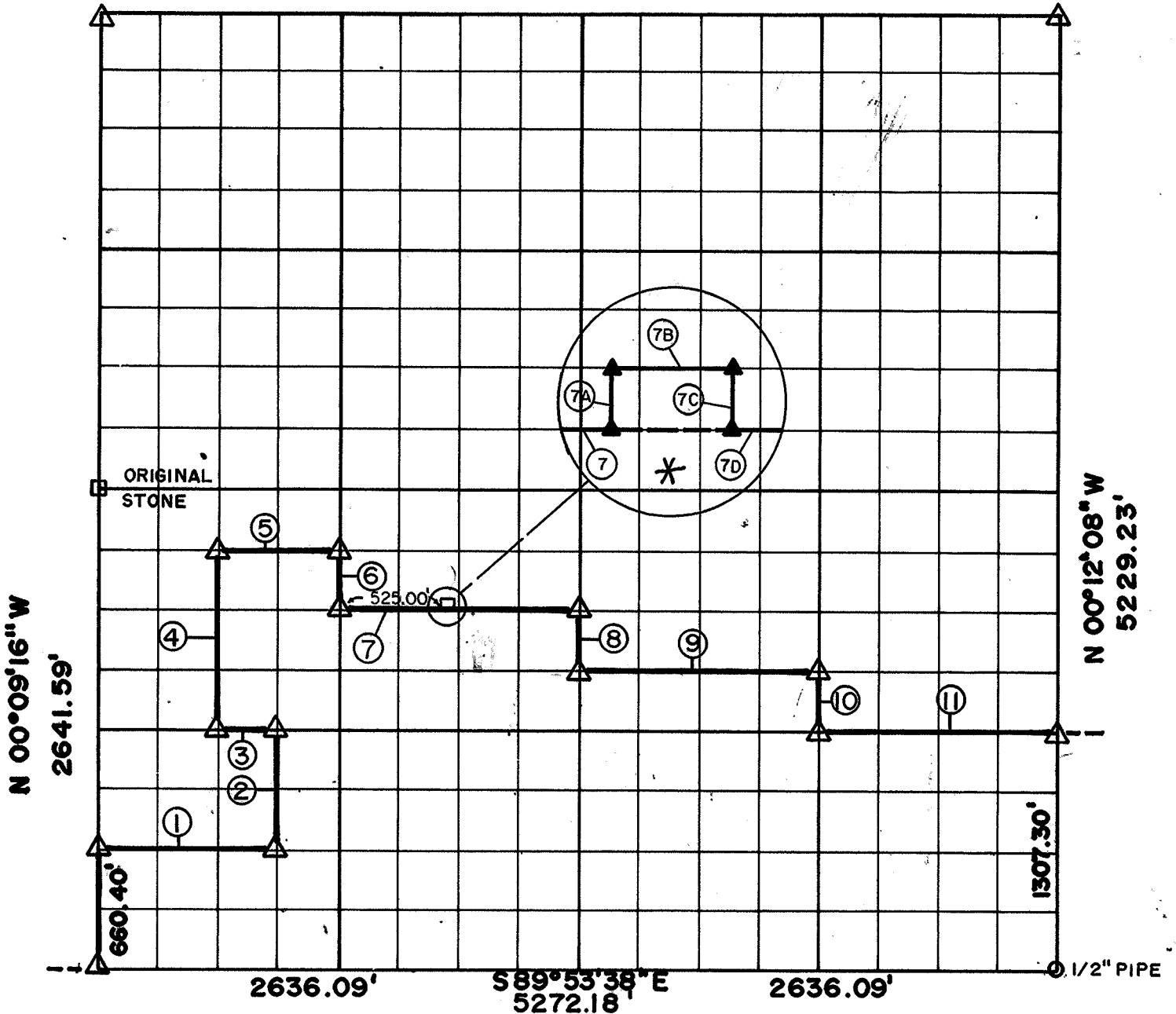
LEGEND

- 1 MONUMENT
- 2 ORIGINAL CORNER
- 3 MON PIN

RECORD BOUNDARY PLAT

LAKE FORT GIBSON, OKLAHOMA

SEC 28 T 18N R 19E COUNTY WAGONER



Course No.	Distance	Bearing	Course No.	Distance	Bearing
1	988.44'	S 89°49'14" E	* 7C	38.00'	S00°19'34" W
2	659.14'	N00°09'48" W	* 7D	712.72'	S89°40'26" E
3	329.45'	N 89°44'50" W	Note: * By Scott & Assoc. Inc.		
4	989.34'	N 00°09'37" W	NOTE: MONUMENTS IN FIELD ARE DESCRIBED BY SECTIONAL SUBDIVISION NOT COURSES AS DEPICTED BY THIS PLAT. ALL BEARINGS ARE UNIQUE & ASSUMED FOR THIS SECTION.		
5	658.80'	S 89°38'14" E			
6	329.36'	S 00°09'59" E			
* 7	525.00'	S 89°40'26" E			
8	329.36'	N 00°13'01" W			
9	1317.72'	N 89°42'38" W			
10	327.67'	N 00°11'25" W			
11	1317.79'	N 89°44'50" W			
* 7A	38.00'	N 00°19'34" E			
* 7B	80.00'	S 89°40'26" E			

SEPT. 1984

Field Book No. 5-1173
* 5-1806

Date SEPT. 1949
MAY 1991

SURVEY PERFORMED BY THE
CORPUS OF ENGINEERS, TULSA DISTRICT
PLATS PREPARED BY
ENTZ ENGINEERING & ASSOCIATES INC. AND
HUFFMAN SURVEYING CO., INC.

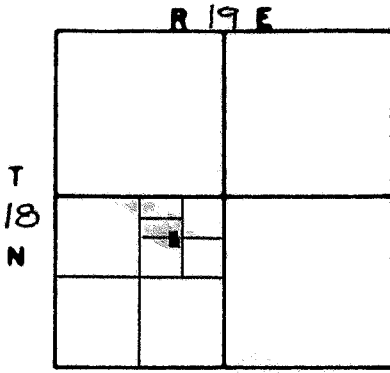
LEGEND

- ▲ MONUMENT
- ORIGINAL CORNER
- IRON PIN

SHEET ___ of ___

PLAT OF SURVEY

LOCATION MAP



LEGEND

Section Line	---
Fence	—x—x—
Water Line	—W—
Gas Line	—G—
Electric Line	—E—
Telephone Line	—T—
Iron Pin	●
Elevation	□
Easement Line	- - - -

Section 28
County WAGONER

"Indian Owned Firm"

SCALE: 1" = 40'

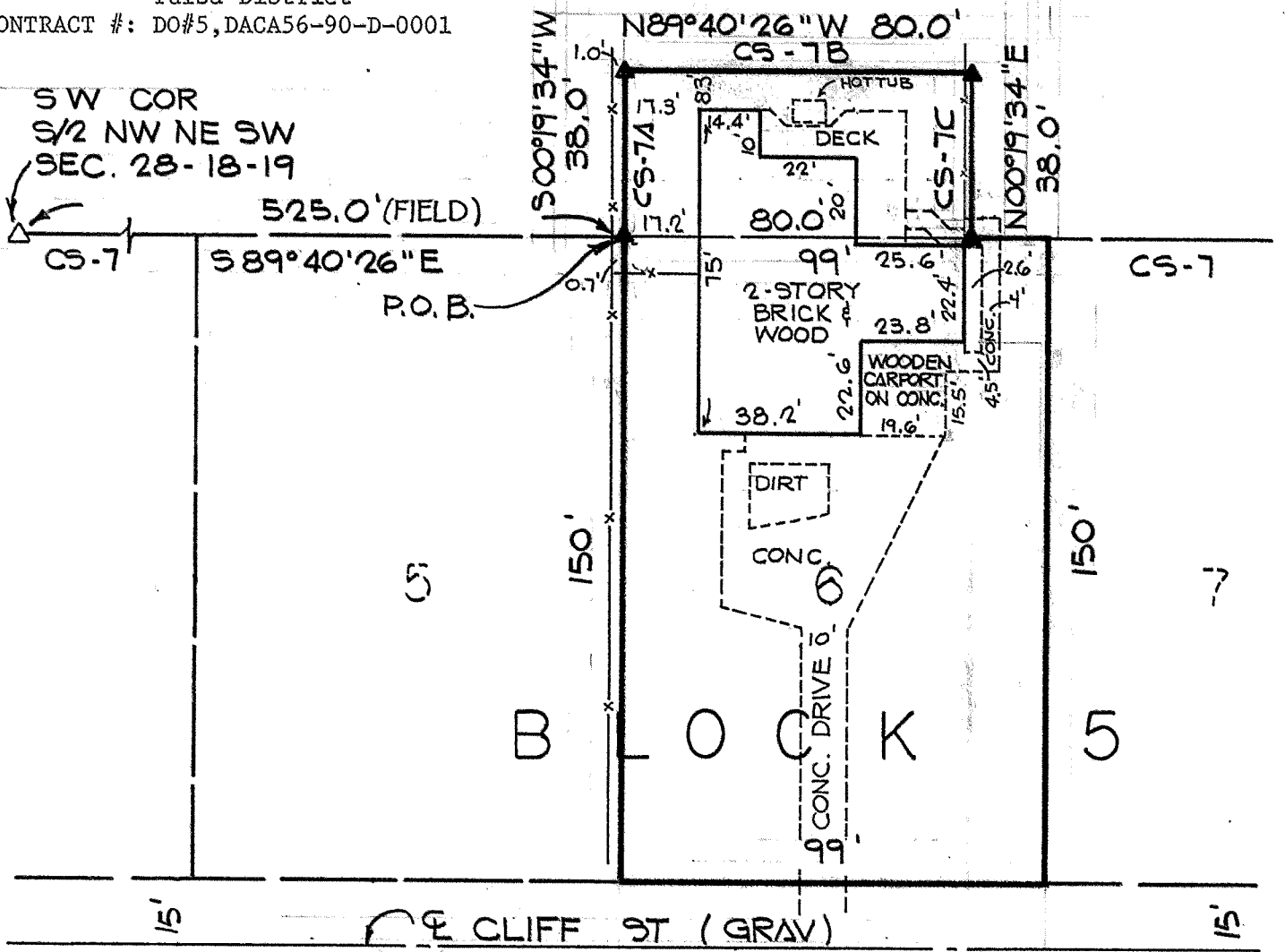
SCOTT & ASSOCIATES, INC.
901-B Callahan Street
Phone: office
night

LAND SURVEYORS
Muskogee, Oklahoma 74403
1-918-682-7577
682-8113



OWNER: Rodney David
ORDERED BY: Corp of Engineers,
Tulsa District
CONTRACT #: DO#5, DACA56-90-D-0001

▲ = C OF E BRASS CAP



PROPERTY DESCRIPTION

Lot 6, Block 5, CLIFF VIEW ESTATES, Wagoner County, Oklahoma AND a tract of land in the S½ NW¼ NE¼ SW¼ of Section 28, T18N R19E, of the Indian Meridian, said tract being adjacent to Lot 6, Block 5 of Cliff View Estates Subdivision, said tract also being a part of Fort Gibson Lake Tract 611 and more particularly described as: Commencing at the southwest corner of said S½ NW¼ NE¼ SW¼; thence S89°40'26"E, 520.00 feet, more or less (525.0 field measurement), to the point of beginning, said point being the northwest corner of said Lot 6; thence S89°40'26"E, 80.00 feet; thence N00°19'34"E, 38.00 feet; thence N89°40'26"W, 80.00 feet; thence S00°19'34"W, 38.00 feet, more or less, to the point of beginning. Containing 0.07 acre, more or less.

survey by: GB
drawn by: LF
typed by: LI
ck'd by: B. [Signature]

WITNESS my hand and seal this 14th day of May 19 91

