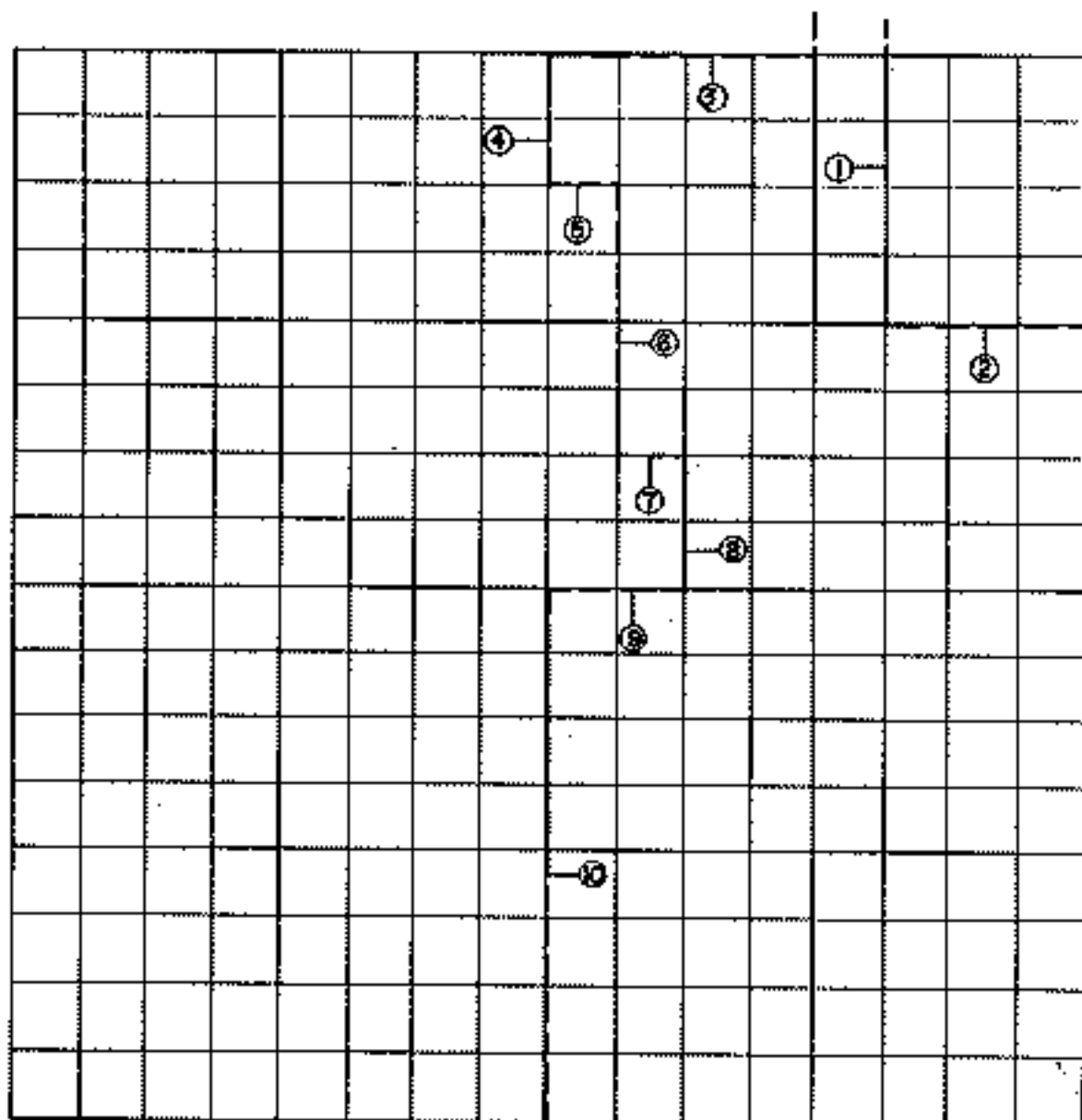


FORT GIBSON RESERVOIR

SEC. 5 T. 18 N. R. 19 E. COUNTY WAGONER



Course Number	Distance	Bearing	Course Number	Distance	Bearing
1	1310.92	S-00-03-32-E	6	1320.74	S-00-00-54-E
2	990.81	S-89-46-02-E	7	310.62	S-89-45-36-E
3	1321.17	N-29-54-33-W	8	660.41	S-00-01-34-E
4	646.47	S-00-00-15-E	9	661.56	N-89-45-11-W
5	130.40	S-89-46-27-E	10	2641.72	S-00-00-15-E

Book No. 5-1581

Pages 13-26

Date: July, 1963

I Charles J. Finkles, the undersigned, a duly Registered Professional Engineer in the State of Oklahoma, do hereby certify that I have supervised the accurate survey of a portion of the boundary line of Ft. Gibson Reservoir shown on this plat. A portion of Section 5, T 18 N. R 19 E. County Wagoner.

Witness my hand and seal this 8th day of August, 1963.

*Charles J. Finkles*  
Oklahoma Registration No. 1063.

Subscribed and witness to, before me this 8th day of

August, 1963.

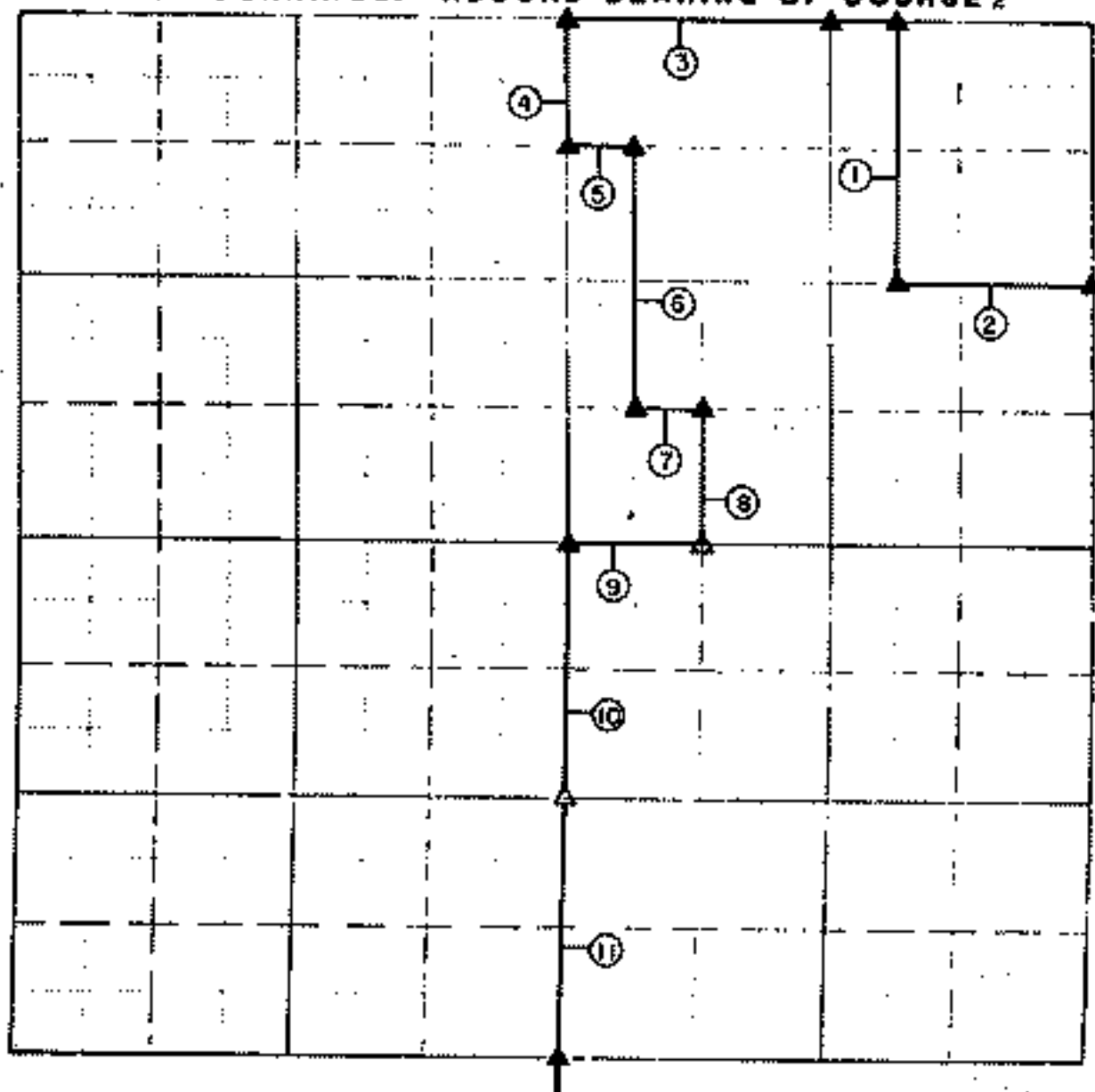
# RETRACEMENT SURVEY PLAT

LAKE FORT GIBSON, OKLAHOMA

PERFORMED UNDER CONTRACT NUMBER DACA58-85-D-0078

SEC. 5, T18 NORTH, R 19 EAST COUNTY WAGONER

BASIS OF BEARINGS: RECORD BEARING OF COURSE 2



Course No	Distance	Bearing	Course No	Distance	Bearing
1	1310.58	S 00° 04' 13" E			
2	890.50	S 89° 48' 02" E			
	310.10	S 88° 54' 19" W			
3	1321.13	N 89° 54' 30" W			
4	546.53	S 00° 02' 04" W			
6	330.55	S 89° 48' 50" E			
6	1320.90	S 00° 00' 08" E			
7	329.90	S 89° 48' 43" E			
8	680.00	S 01° 37' 12" W			
8	681.46	N 89° 45' 34" W			
10	1320.38	S 00° 00' 32" E			
11	1320.38	S 00° 00' 32" E			

Field Book No 5-1591 Date SEPTEMBER, 1986

CRAFTON, TULL, SPANN & YOE, INC.

under the supervision of

U.S. ARMY ENGINEER DISTRICT

TULSA CORPS OF ENGINEERS

LEGEND

○ SET MONUMENT

△ FOUND MONUMENT

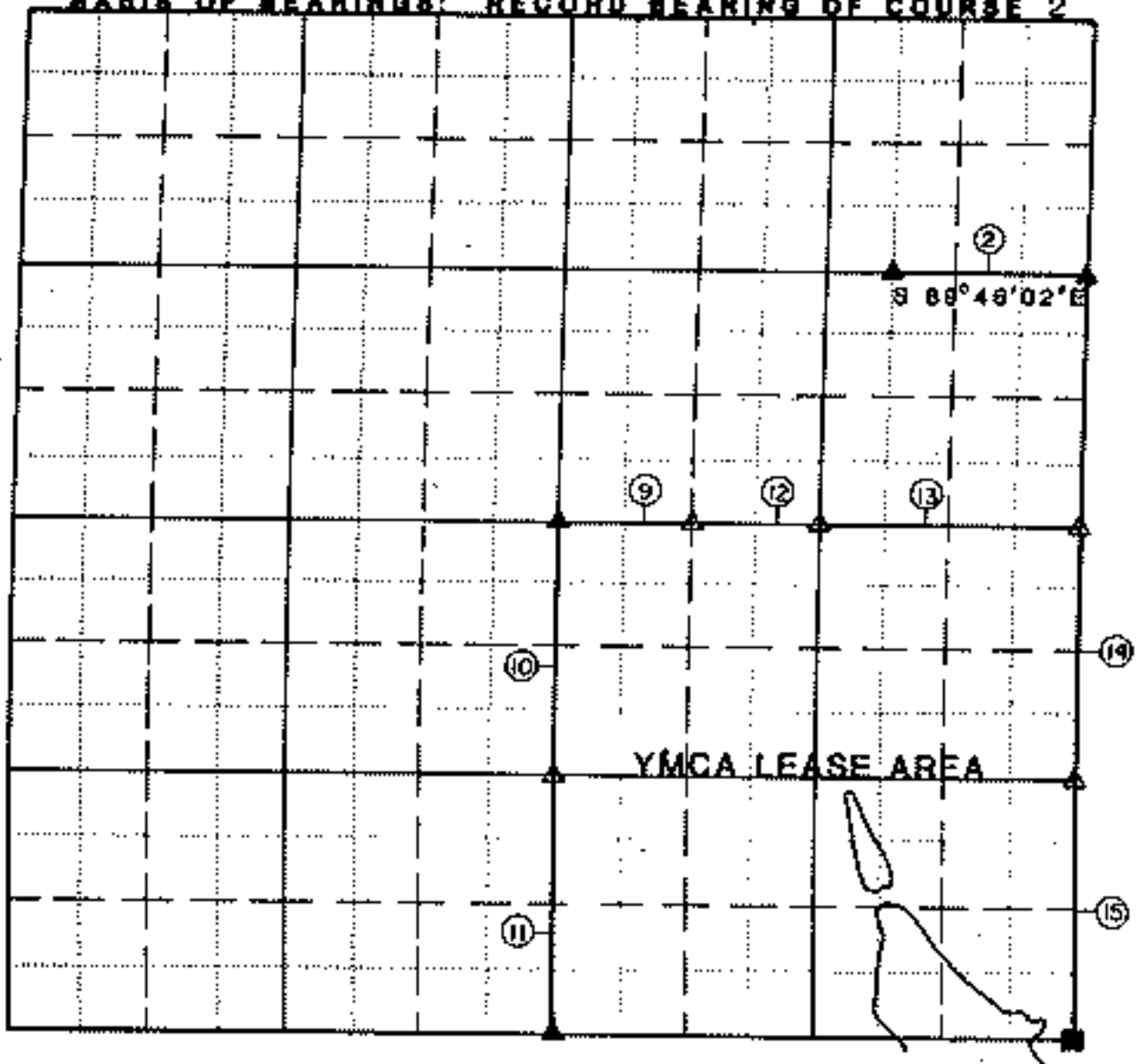
# PARTIAL BOUNDARY SURVEY PLAT

LAKE FORT GIBSON, OKLAHOMA

PERFORMED UNDER CONTRACT NUMBER DACA68-85-D-0078

SEC. 5, T18 NORTH, R19 EAST COUNTY WAGONER

BASE OF BEARINGS: RECORD BEARING OF COURSE 2



Course No	Distance	Bearing	Course No	Distance	Bearing
9	661.46	N 89° 45' 34" W			
10	1320.38	S 00° 00' 32" E			
11	1320.38	S 00° 00' 32" E			
12	661.44	S 89° 45' 37" E			
13	1322.90	S 89° 45' 37" E			
14	1320.88	S 00° 05' 31" E			
15	1320.88	S 00° 05' 31" E			

Field Book No. 5-1581 Date JANUARY, 1987

CRAFTON, TULL, SPANN & YOE, INC.

under the supervision of  
U.S. ARMY ENGINEER DISTRICT  
TULSA CORPS OF ENGINEERS

LEGEND  
△ SET MONUMENT  
▲ FOUND MONUMENT  
■ FOUND STONE