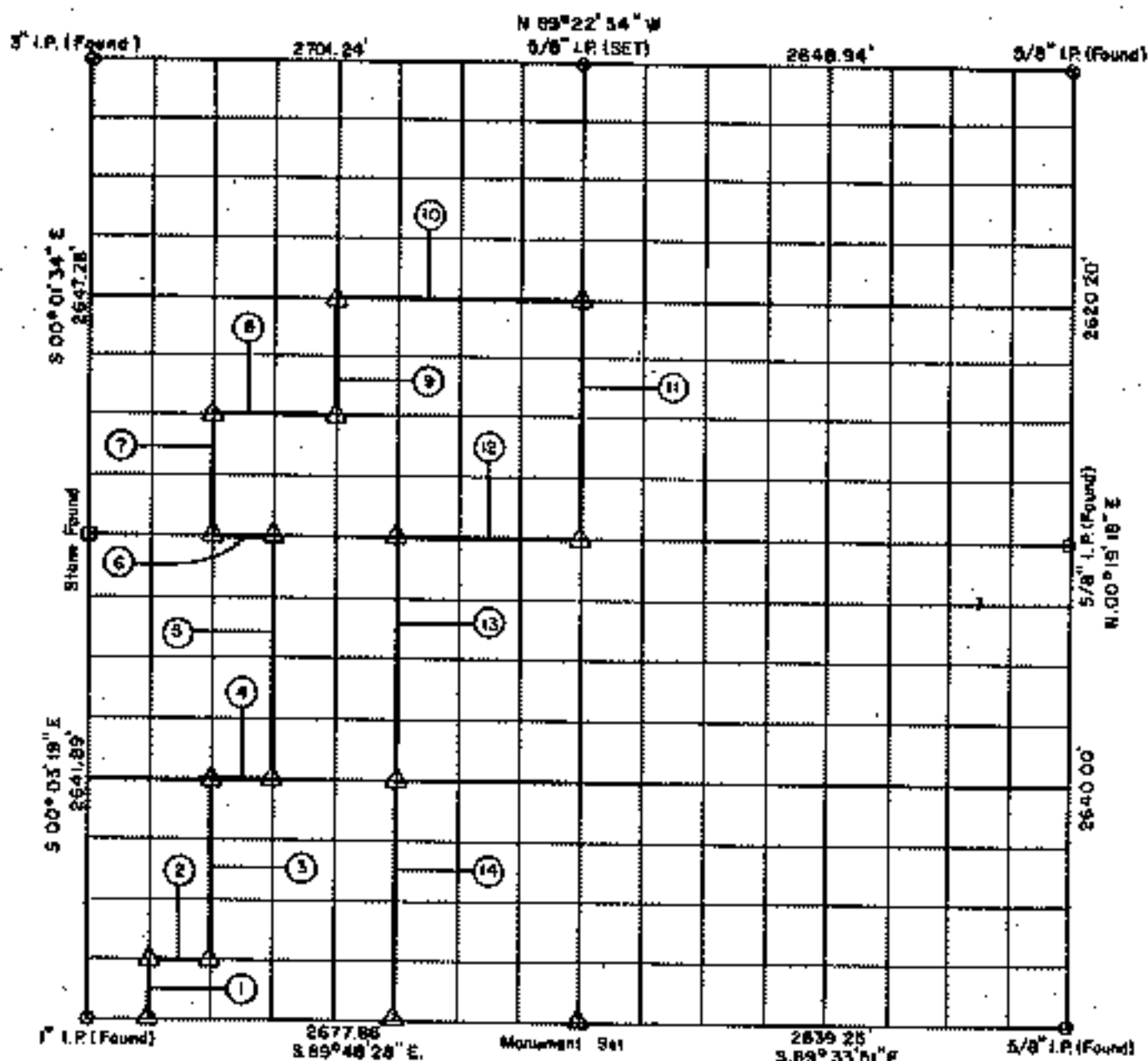


PARTIAL BOUNDARY SURVEY

FORT GIBSON LAKE
GRAND RIVER, OKLAHOMA

Performed Under Contract Number DACW56-71-C-0108

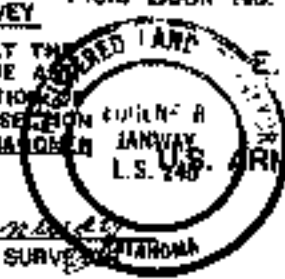
SEC 6 T-18-N R-19-E COUNTY WAGONER



Course No.	Distance	Bearing	Course No.	Distance	Bearing
1	330.15'	N. 00° 31' 26\" W.	14	1318.83'	S. 00° 13' 08\" W.
2	332.03'	S. 89° 47' 24\" E.			
3	990.12'	N. 00° 16' 31\" W.			
4	336.33'	S. 89° 44' 12\" E.			
5	1319.71'	N. 00° 01' 37\" W.			
6	342.06'	N. 89° 39' 56\" W.			
7	661.56'	N. 00° 03' 58\" E.			
8	685.18'	S. 89° 38' 47\" E.			
9	661.33'	N. 00° 09' 29\" E.			
10	1323.20'	S. 89° 37' 37\" E.			
11	1321.78'	S. 00° 12' 43\" W.			
12	991.47'	N. 89° 39' 56\" W.			
13	1318.83'	S. 00° 13' 08\" W.			

CERTIFICATE OF SURVEY Field Book No. 5-1814 Date: MARCH, 1971

I HEREBY CERTIFY THAT THE ABOVE PLAT IS A TRUE AND CORRECT REPRESENTATION OF THE SURVEY MADE IN SECTION 6, T-18-N, R-19-E, WAGONER COUNTY, OKLAHOMA.



E. H. SCHMIDT CORPORATION

Under the Supervision of

ARMY ENGINEER DISTRICT, TULSA
CORPS OF ENGINEERS

SHEET 1 of 1

- LEGEND:
- ▲ MONUMENT
 - ORIGINAL CORNER
 - IRON PIN
 - * COMPUTED DISTANCE

Eugene R. Ramsey
REGISTERED LAND SURVEYOR