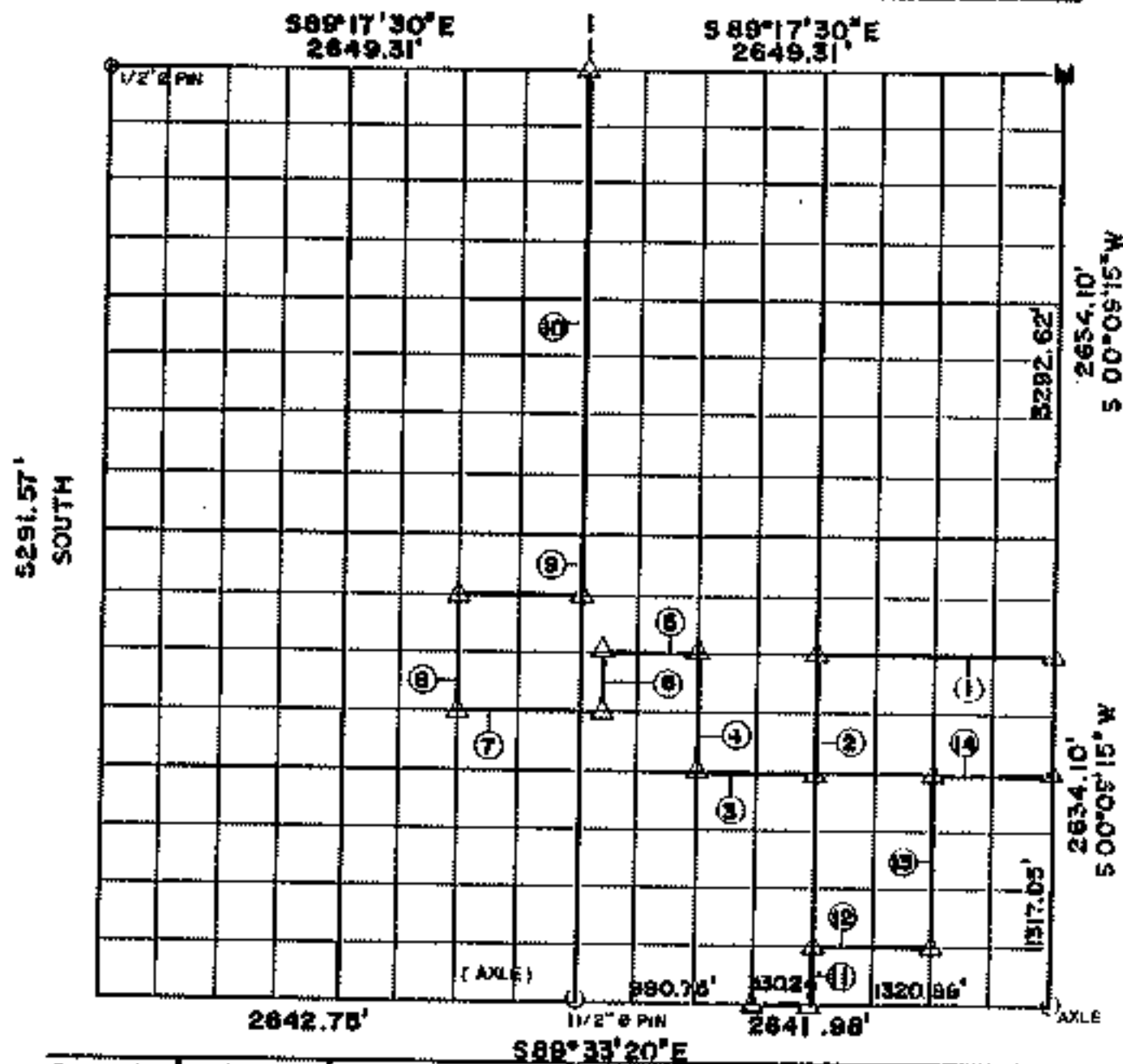


# RECORD BOUNDARY PLAT

LAKE FORT GIBSON, OKLAHOMA

SEC 8 T 16 N R 19 E COUNTY WAGONER



Course No.	Distance	Bearing	Course No.	Distance	Bearing
1	1322.38'	N89°27'21" W	14	680.50	S89°29'19" E
2	659.26	S00°06'54" W			
3	660.96	N69°29'19" W			
4	659.62	N00°05'45" E			
5	495.89	N89°27'21" W			
6	329.94	S00°04'51" W			
7	826.47	N89°28'20" W			
8	660.52	N00°03'25" E			
9	660.74	S89°26'22" W			
10	2969.93	N00°04'33" E			
11	329.63	N00°06'49" E			
12	660.62	S89°32'21" E			
13	988.29	N00°08'00" E			

NOTE: MONUMENT IN FIELD ARE DESCRIBED BY SECTIONAL SUBDIVISION NOT COURSES AS DEPICTED BY THIS PLAT. ALL BEARINGS ARE WHOLE & ASSUMED FOR THIS SECTION.

SEPT., 1984 Field Book No. 5-1218 Date FEB., 1950

SURVEY PERFORMED BY THE  
CORPS OF ENGINEERS, TULSA DISTRICT  
PLATS PREPARED BY  
ENTZ ENGINEERING & ASSOCIATES INC. AND  
HUFFMAN SURVEYING CO., INC.

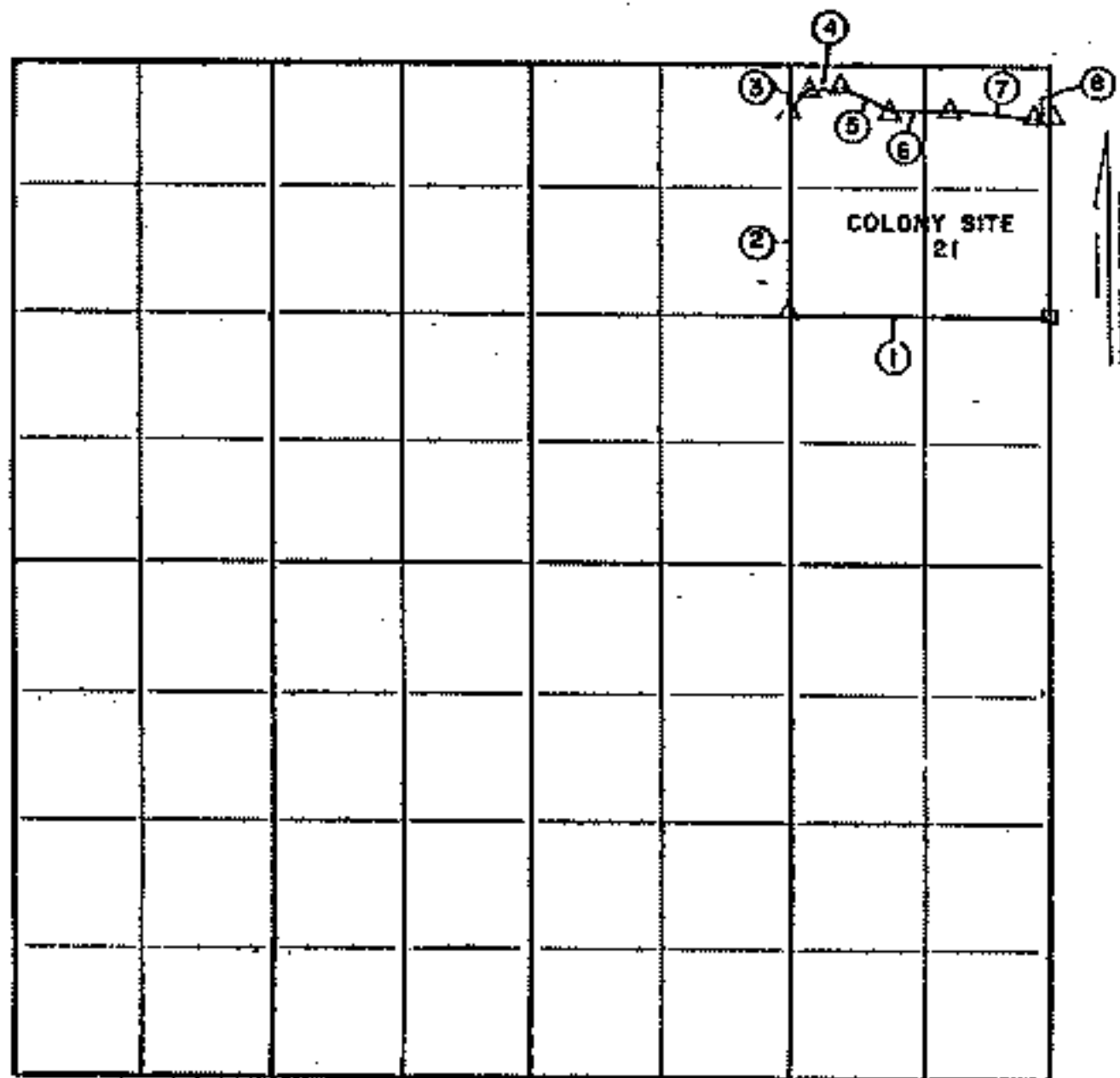
LEGEND

- ▲ MONUMENT
- ORIGINAL CORNER
- IRON PIN
- STONE SET BY G.O.C.

**PARTIAL BOUNDARY SURVEYS  
FT. GIBSON LAKE  
OKLAHOMA**

Performed Under Contract Number DACW 56-85-C-0127

SE/4 SEC. 8 , T. 18 N , R. 19 E , COUNTY WAGONER



Course No.	Distance	Bearing	Course No.	Distance	Bearing
1	660.06'	N 89° 42' W			
2	633.40'	N 00° 05' W			
3	96.60'	N 51° 42' E			
4	76.75'	S 87° 28' E			
5	150.00'	S 65° 13' E			
6	151.50'	N 89° 35' E			
7	224.00'	S 85° 28' E			
8	14.55'	S 65° 28' E			

**OKLAHOMA LAND SURVEY**  
 FIELD BOOK NO. 5-2005  
 DATE 8-12-85  
 L.B. 545  
 SCOTT & ASSOCIATES, INC.  
 ENGINEERING & SURVEYING

Field Book No. 5-2005 Date 8-12-85

**SCOTT & ASSOCIATES, INC**  
 Engineering & Surveying  
 For

U.S. ARMY ENGINEER DISTRICT, TULSA  
 CORPS OF ENGINEERS

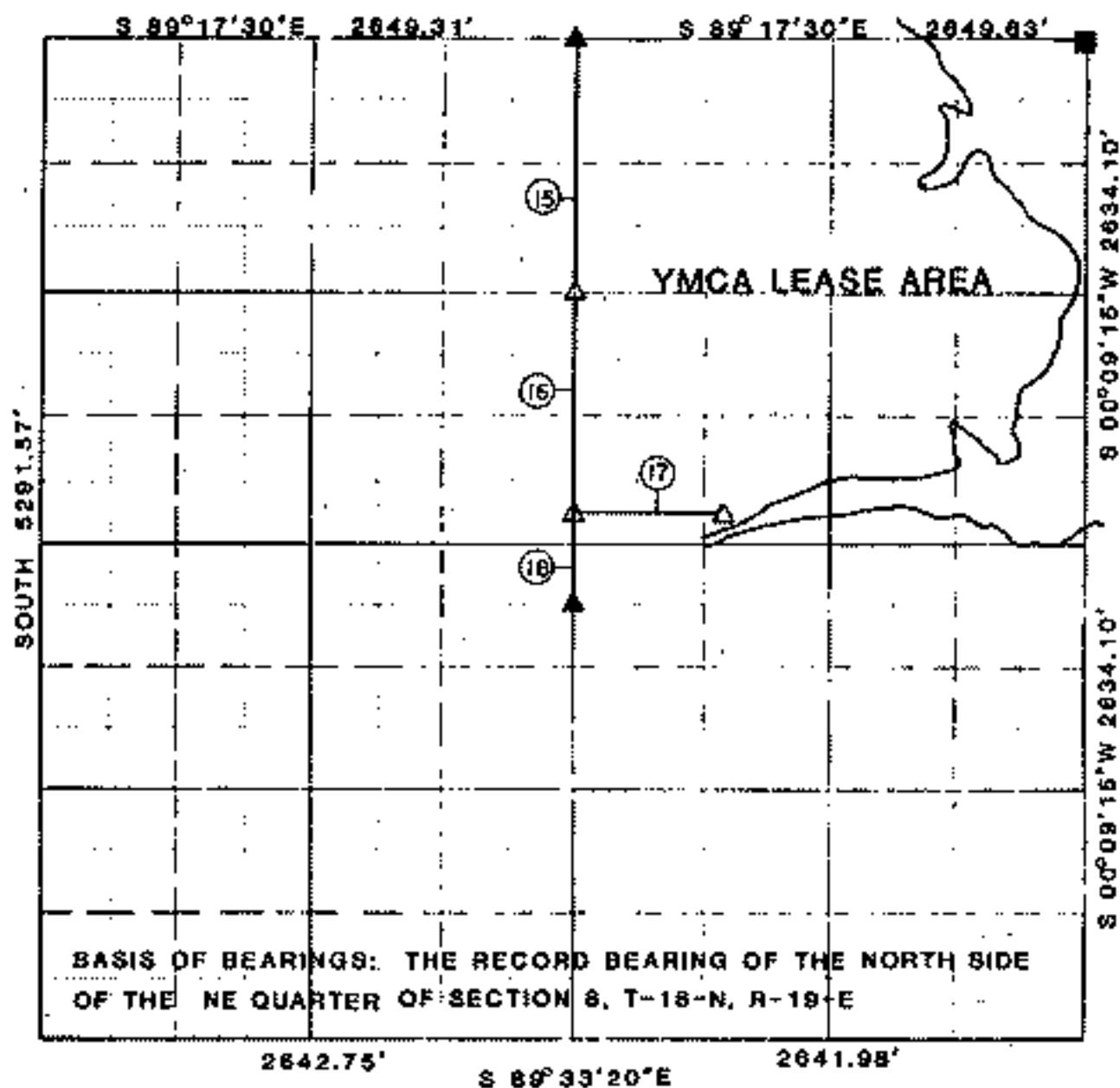
Δ MONUMENT  
 ○ ORIGINAL CORNER  
 ○ IRON PIN

# PARTIAL BOUNDARY SURVEY PLAT

LAKE FORT GIBSON, OKLAHOMA

PERFORMED UNDER CONTRACT NUMBER DACA56-85-D-0078

SEC. 8, T18 NORTH, R 19 EAST COUNTY WAGONER



Course No	Distance	Bearing	Course No	Distance	Bearing
15	1320.25	S 00°05'01"W			
16	990.18	S 00°05'01"W			
17	760.55	S 89°24'44"E			
18	658.58	S 00°05'01"W			

Field Book No. 6-1218 Date JANUARY, 1987

CRAFTON, TULL, SPANN & YOE, INC.

under the supervision of  
U.S. ARMY ENGINEER DISTRICT

LEGEND

- SET MONUMENT
- ▲ FOUND MONUMENT
- FOUND STONE

REGISTERED PROFESSIONAL ENGINEERS