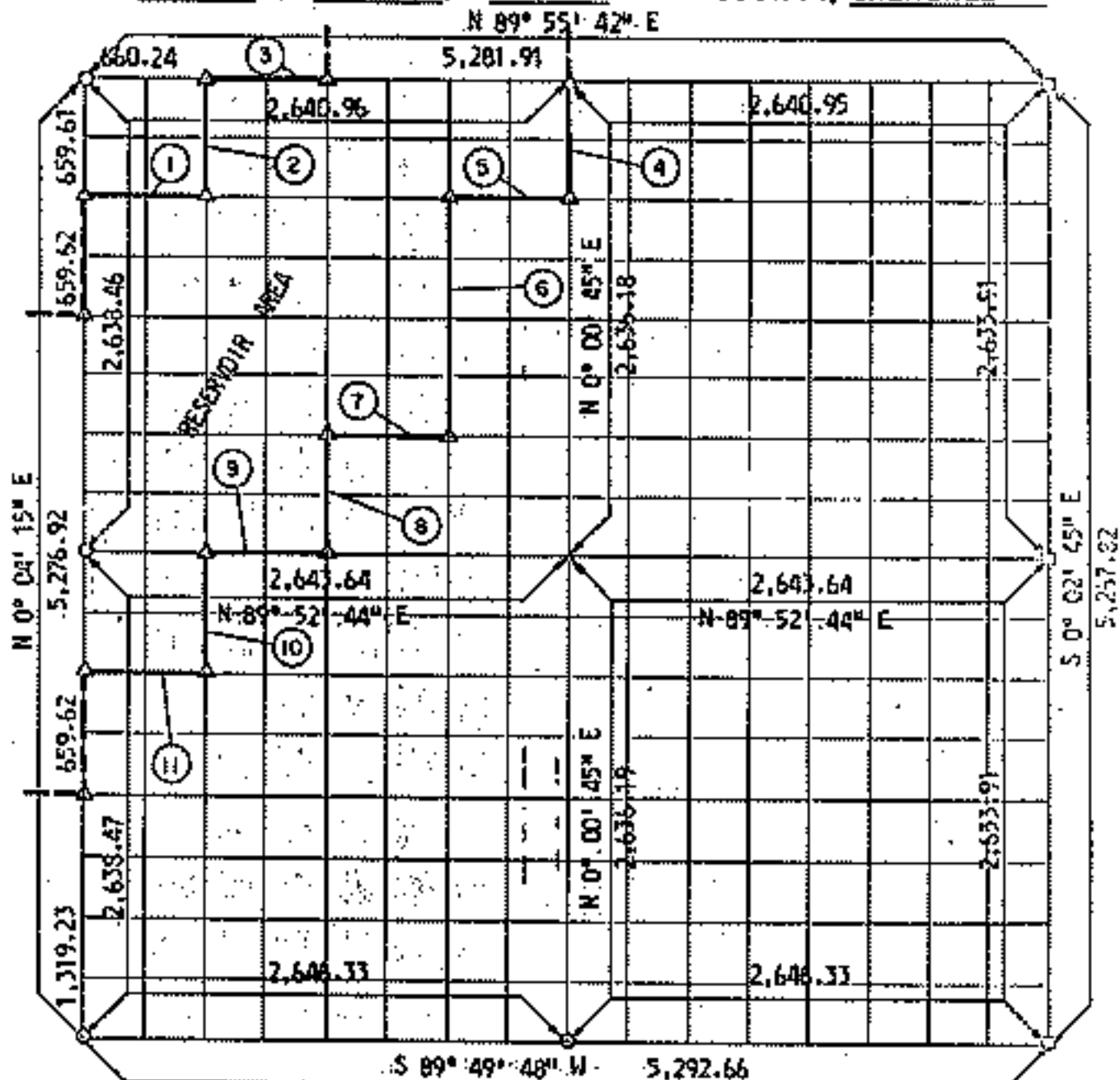


**PARTIAL BOUNDARY SURVEYS
FORT GIBSON LAKE
AREA "D"**

Performed Under Contract Number DACW 56-71-C-0110

SEC. 29 T. 18 N. R. 20 E COUNTY, CHEROKEE



Course No.	Distance	Bearing	Course No.	Distance	Bearing
1	660.41	N 89° 54' 58" E			
2	659.47	N 0° 03' 23" E			
3	660.24	N 89° 55' 42" E			
4	659.04	S 0° 00' 45" W			
5	660.41	S 89° 54' 58" W			
6	1,318.36	S 0° 01' 37" W			
7	660.75	S 89° 53' 29" W			
8	659.33	S 0° 02' 30" W			
9	660.91	S 89° 52' 44" W			
10	659.47	S 0° 03' 23" W			
11	661.08	S 89° 52' 00" W			

CERTIFICATE OF SURVEY

I HEREBY CERTIFY THAT THE ABOVE PLAT IS A TRUE AND CORRECT REPRESENTATION OF THE SURVEY MADE IN SECTION 29, T 18 N, R 20 E, CHEROKEE COUNTY, OKLAHOMA.

Field Book No. 5-1821

Date MAY, 1971

**MANSUR-STEELE-WILLIAMS, INC.
CONSULTING ENGINEERS**

Under the Supervision of _____

LEGEND

- △ MONUMENT
- ORIGINAL CORNER
- IRON PIN