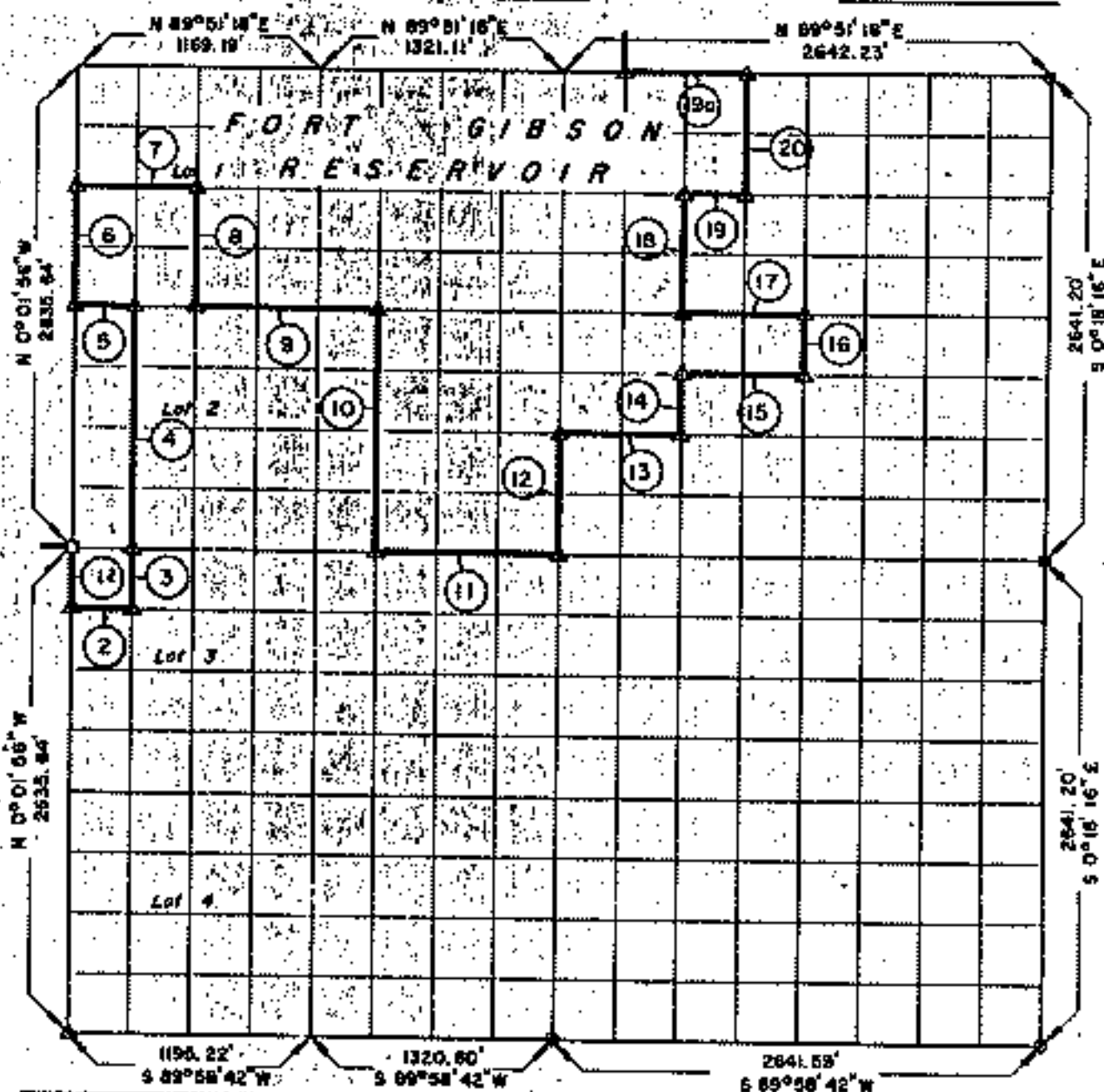


**PARTIAL BOUNDARY SURVEYS
FORT GIBSON RESERVOIR
GRAND RIVER, OKLAHOMA**

Performed Under Contract Number DACW 56-70-C

SEC. 31 T-18-N R-20-E COUNTY CHEROKEE



Course No.	Distance	Bearing	Course No.	Distance	Bearing
1	329.45	S 0° 01' 56\" E	14	329.88	N 0° 18' 35\" W
2	295.96	N 89° 55' 29\" E	15	660.51	N 89° 53' 38\" E
3	329.50	N 0° 06' 11\" W	16	329.97	N 0° 18' 29\" W
4	1317.98	N 0° 06' 11\" W	17	660.52	S 89° 53' 09\" W
5	293.93	S 89° 53' 09\" W	18	659.77	N 0° 18' 35\" W
6	658.91	N 0° 01' 56\" W	19	330.27	N 89° 52' 14\" E
7	586.22	N 89° 52' 14\" E	20	659.86	N 0° 18' 32\" W
8	659.07	S 0° 10' 25\" E	19a*	660.56	S 89° 51' 18\" W
9	918.11	N 89° 53' 09\" E			
10	1318.64	S 0° 16' 51\" E	* See	Sec. 30, T-18-N, R-20-E Plot	
11	990.71	N 89° 55' 01\" E			
12	659.59	N 0° 16' 42\" W			
13	660.50	N 89° 54' 05\" E			

CERTIFICATE OF SURVEY

I HEREBY CERTIFY THAT THE ABOVE PLAN IS A TRUE AND CORRECT REPRESENTATION OF THE SURVEY MADE IN SECTION 31, T-18-N, R-20-E, CHEROKEE COUNTY, OKLAHOMA.

Field Book No. 5-1805 Date 7-10-70

K.N. COX & ASSOCIATES - ENGINEERS

Under the Supervision of

**U.S. ARMY ENGINEER DISTRICT, TULSA
CORPS OF ENGINEERS**

LEGEND

- △ MONUMENT
- ORIGINAL CORNER
- IRON PIN