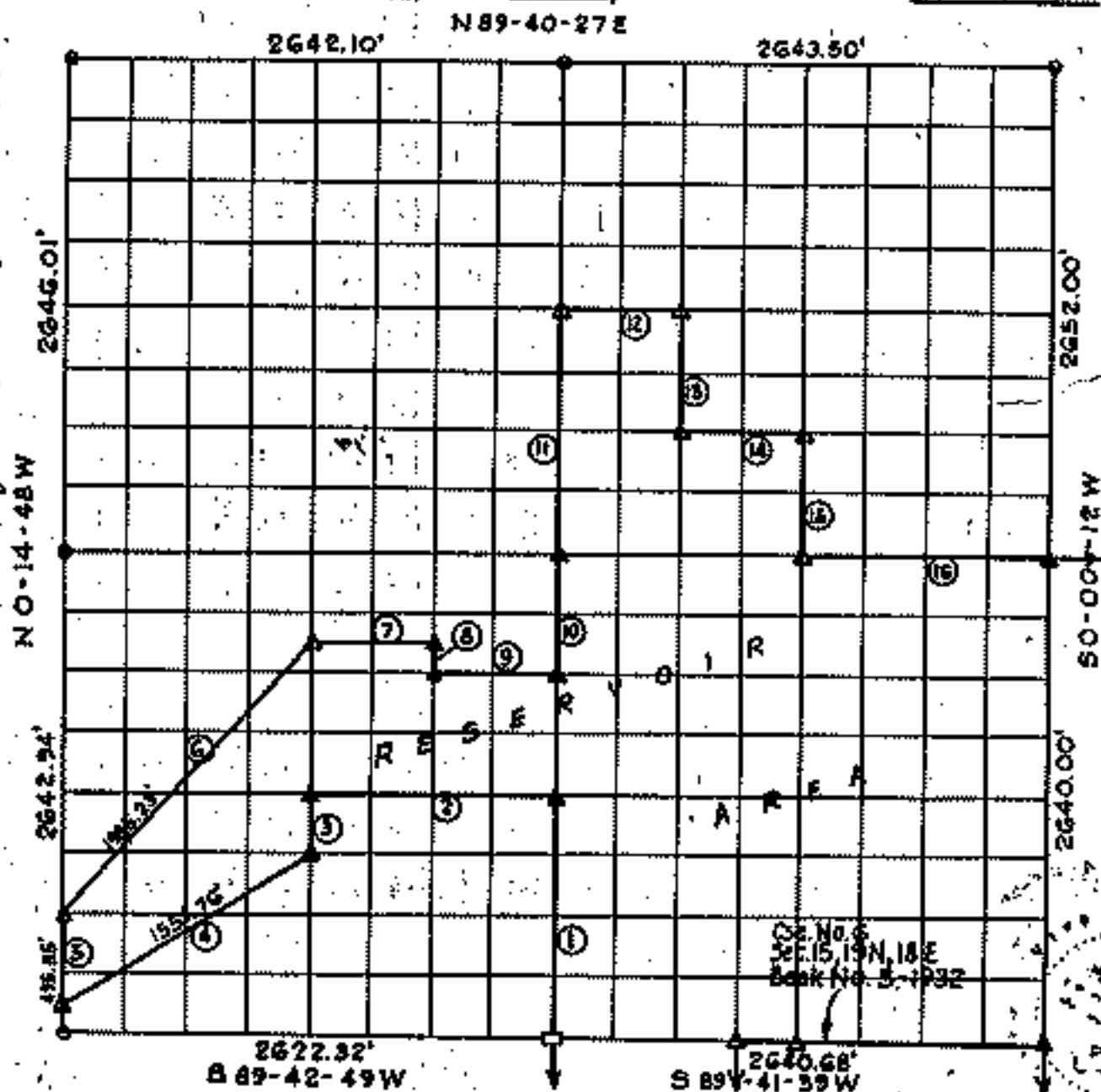


# FORT GIBSON LAKE, AREA "A" OKLAHOMA

Performed under Contract Number DACW56-77-C-0058  
SEC. 10, T. 19N., R. 18E., COUNTY MAYES

Filed 7 day of June 1977 Mayes County, Okla.  
Surveyor's Book Page 1  
By Sammy Howard, Co. Clerk  
Deputy



Course No.	Distance	Bearing	Course No.	Distance	Bearing
1	1320.91'	N 0-01-57W	11	1323.85'	N 0-01-57W
2	1313.63'	S 89-43-34W	12	661.45'	N 89-42-23E
3	330.05'	S 0-08-28E	13	662.06'	S 0-01-25E
4	1551.76'	S 57-33-39W	14	660.56'	N 89-43-21E
5	495.55'	N 0-14-48W	15	661.88'	S 0-00-53E
6	1985.23'	N 41-14-33E	16	1320.92'	N 89-44-19E
7	657.59'	N 89-44-02E			
8	165.13'	S 0-05-10E			
9	657.93'	N 89-45-57E			
10	660.35'	N 0-01-57W			

### Certificate of Survey

I hereby certify that the above plat is a true and correct representation of the survey made in Sec. 10, T. 19N., R. 18E., Mayes County, Oklahoma.

Charles J. Finkles  
Charles J. Finkles

Scale: 1:10,000  
Date: May 1977

Sheet 1 of 2

### Legend

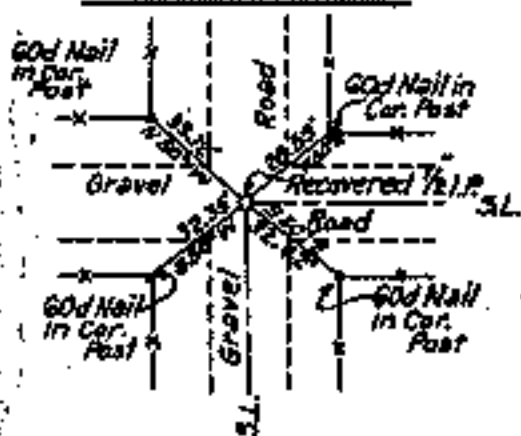
- △ Monument
- Orig. Corner
- Iron Pin

# FORT GIBSON LAKE, AREA "A" OKLAHOMA

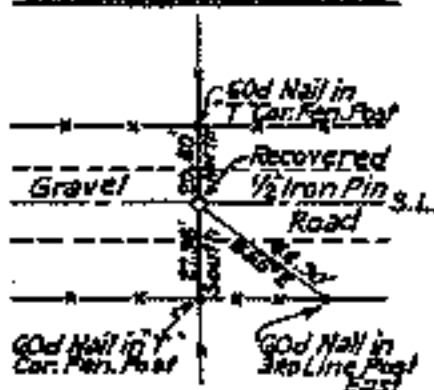
## SECTION AND QUARTER SECTION CORNER REFERENCES FOR

SECTION 10, T. 19 N., R. 18 E., COUNTY MAYES

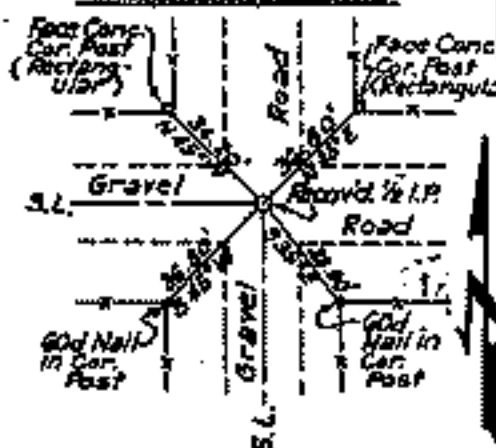
N.W. CORNER



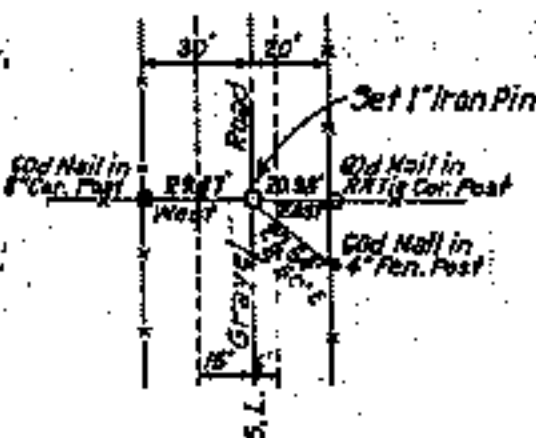
NORTH 1/4 COR.



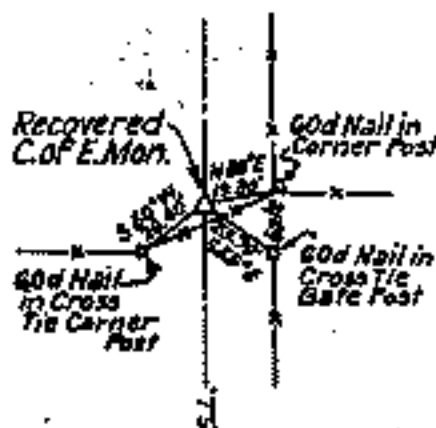
N.E. CORNER



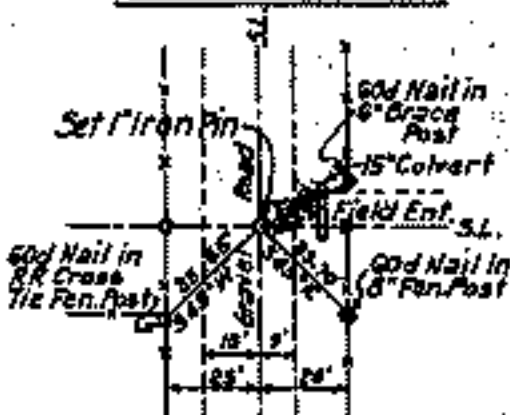
WEST 1/4 COR.



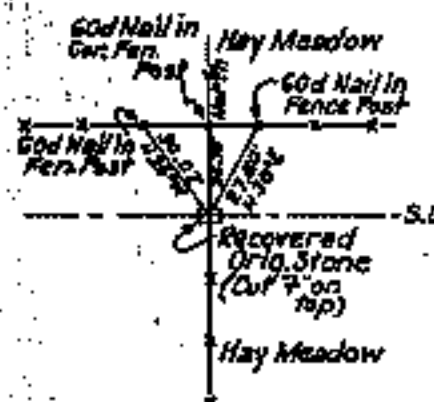
EAST 1/4 COR.



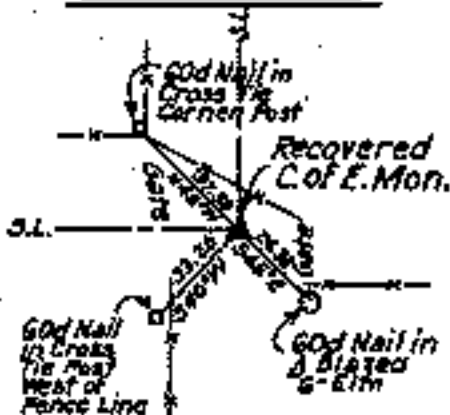
S.W. CORNER



SOUTH 1/4 COR.



S.E. CORNER



Sheet 2 of 2

Certificate of Survey

Scale: 1" = 50'  
Date: May 1977  
Field Book No. 5-1928

I hereby certify that the above plat is a true and correct representation of the survey made in Sec. 10, T19 N., R. 18 E., Mayes County, Oklahoma.

*Charles J. Finklea*  
Charles J. Finklea



Legend

- △ Monument
- Orig. Corner
- Iron Pin
- ▲ Mon. by O.H.D.