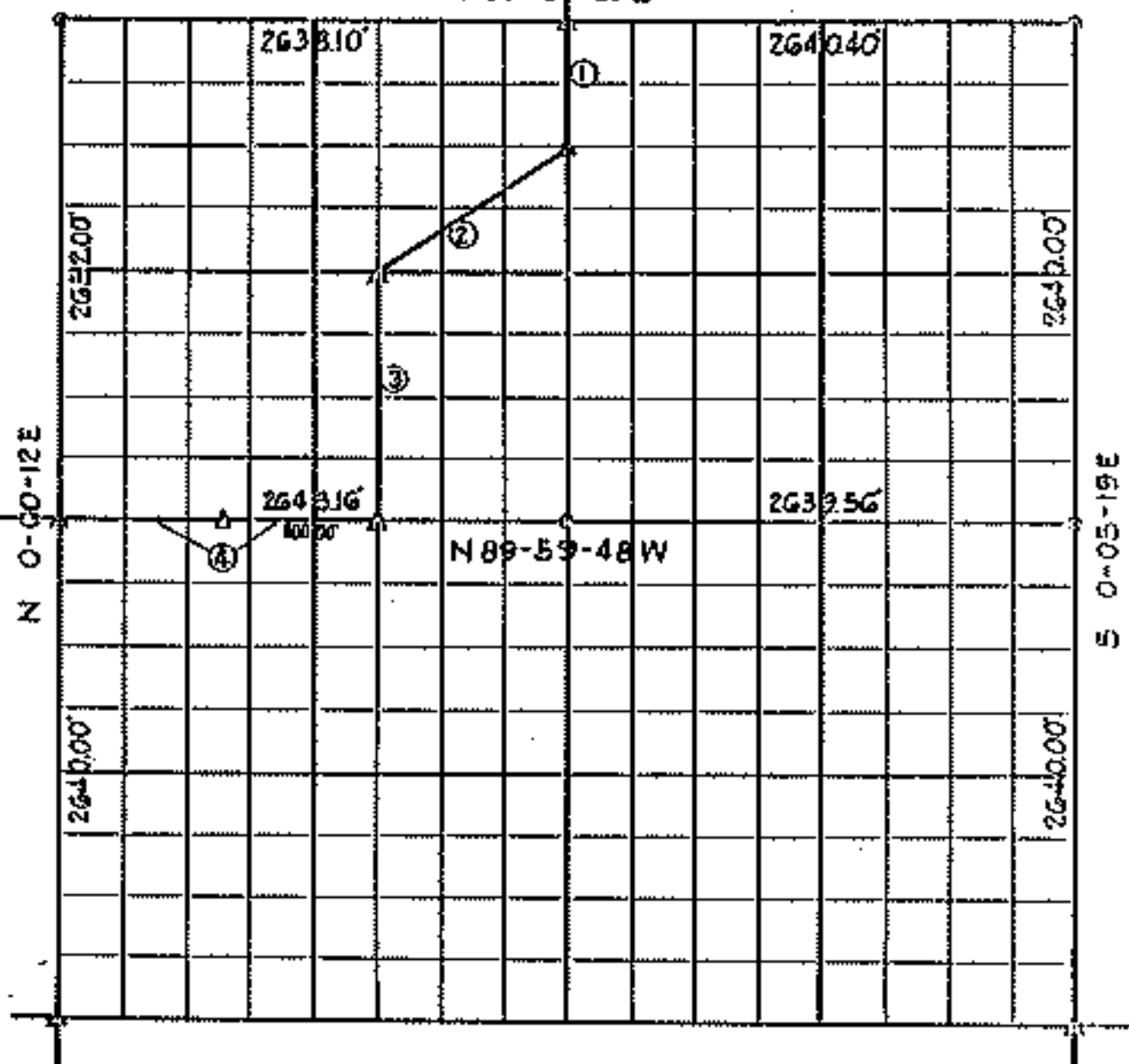


S 89-51-59 E



Course Number	Distance	Bearing	Course Number	Distance	Bearing
1	663.36	S 0° 03' 58" E			
2	1189.70	S 59° 10' 12" W			
3	1323.95	S 0° 03' 03" E			
4	1651.98	N 89° 59' 48" W			

Book No. 5-1035

Date: October, 1971

I, Charles J. Finkler, hereby certify that the above plat is a true and correct representation of the survey made in Section 11, T19N, R18E.



**LEGEND**

- △ Monument
- Original Corner
- Iron Pin

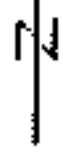
*Charles J. Finkler*

Registered Land Surveyor No. 35

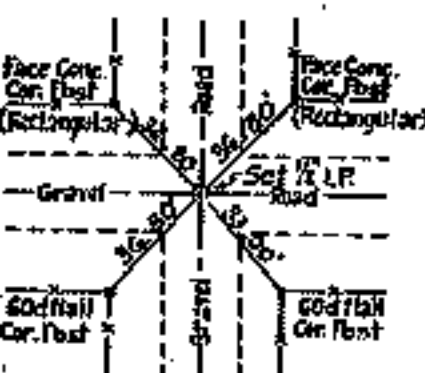
**FORT GARDNER LAKE  
GRAND RIVER, OKLAHOMA  
SECTION AND QUARTER SECTION CORNER  
REFERENCES FOR**

**SEC. 11, T 19N, R 18E**

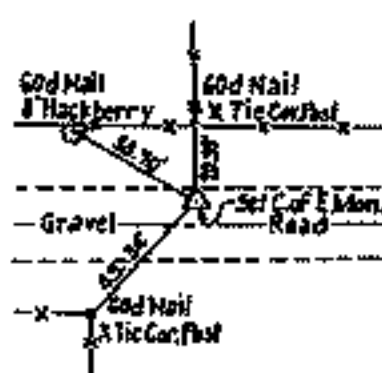
**COUNTY MAYES**



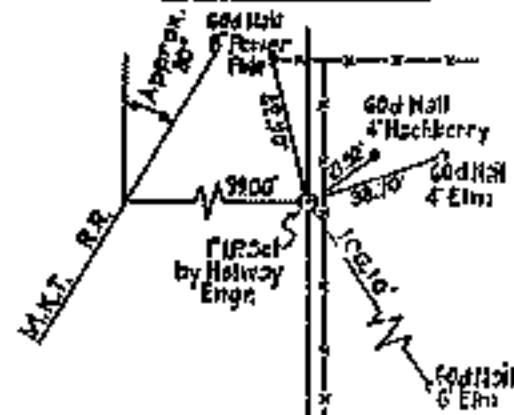
**N.W. CORNER**



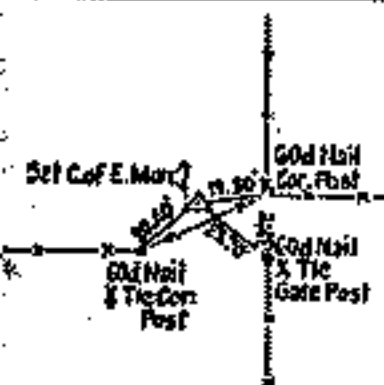
**NORTH 1/4 COR. BOUNDARY LINE**



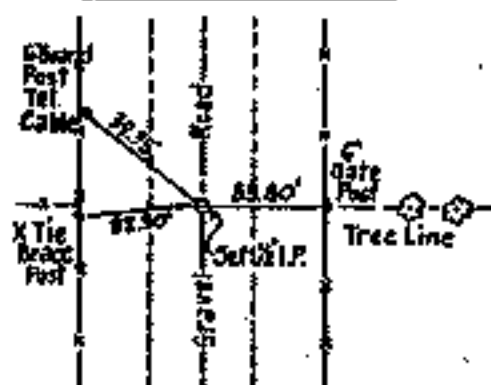
**N.E. CORNER**



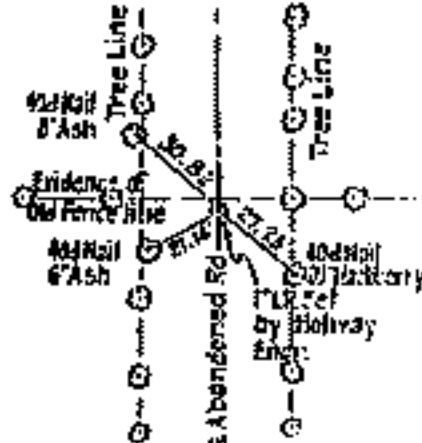
**WEST 1/4 COR. BOUNDARY LINE**



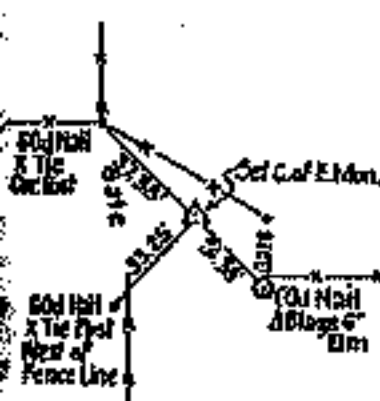
**CEN. 1/4 CORNER**



**EAST 1/4 CORNER**

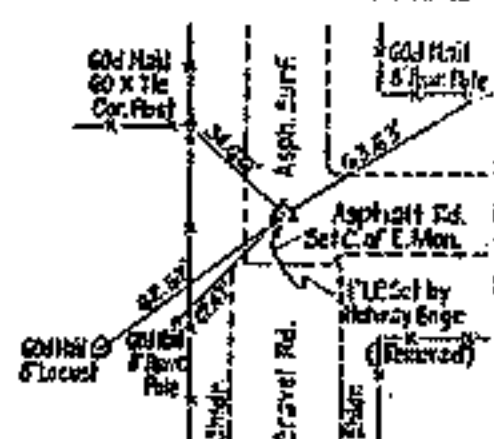


**S.W. CORNER BOUNDARY CORNER**



This C/4 Section line from North 1/4 Cor. South is straight for 2 miles.  
**NO SOUTH 1/4 CORNER SET**

**S.E. CORNER BOUNDARY CORNER**



**SAN JUAN ENGINEERING Co.**

Scale: 1" = 50'  
Date: Oct. 1971  
Field Book 5-1835

**LEGEND**

- ▲ Monument
- Original Corner
- Iron Pin

PARTIAL BOUNDARY SURVEYS  
 FT. GIBSON LAKE OKLA.  
 SEC. 11 T-19 -N R-18 -E  
 12, 13, 14  
 & 23

PARCEL 71

COUNTY MAYES

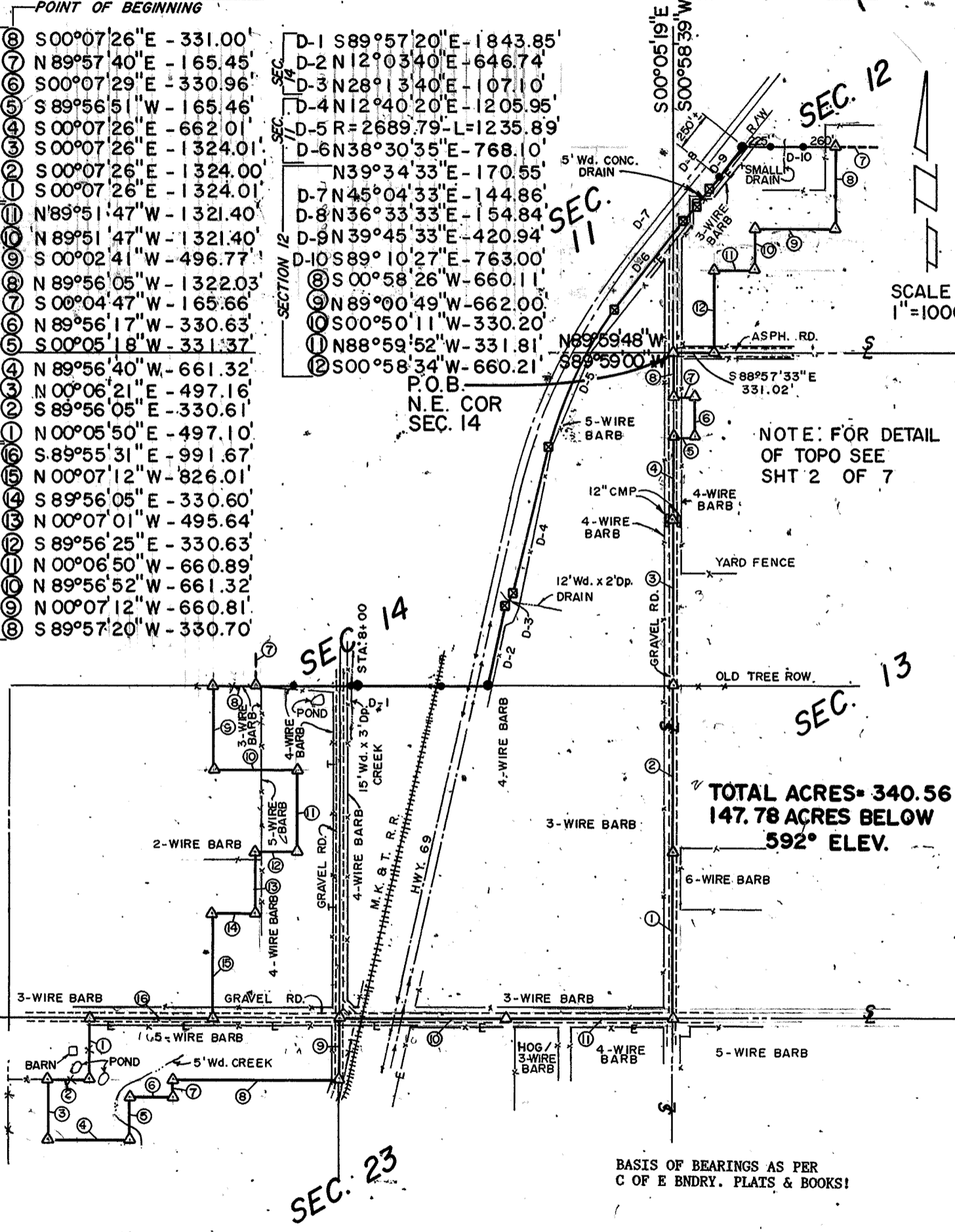
D.O. NO. 0002

Performed Under Contract No. DACA 56-88-D-0047

POINT OF BEGINNING

- SECTION 13
- ⑧ S00°07'26"E - 331.00
- ⑦ N89°57'40"E - 165.45
- ⑥ S00°07'29"E - 330.96
- ⑤ S89°56'51"W - 165.46
- ④ S00°07'26"E - 662.01
- ③ S00°07'26"E - 1324.01
- ② S00°07'26"E - 1324.00
- ① S00°07'26"E - 1324.01
- SECTION 23
- ⑩ N89°51'47"W - 1321.40
- ⑨ N89°51'47"W - 1321.40
- ⑧ S00°02'41"W - 496.77
- ⑦ N89°56'05"W - 1322.03
- ⑥ S00°04'47"W - 165.66
- ⑤ N89°56'17"W - 330.63
- ④ S00°05'18"W - 331.37
- SECTION 14
- ④ N89°56'40"W - 661.32
- ③ N00°06'21"E - 497.16
- ② S89°56'05"E - 330.61
- ① N00°05'50"E - 497.10
- ⑩ S89°55'31"E - 991.67
- ⑨ N00°07'12"W - 826.01
- ⑧ S89°56'05"E - 330.60
- ⑦ N00°07'01"W - 495.64
- ⑥ S89°56'25"E - 330.63
- ⑤ N00°06'50"W - 660.89
- ④ N89°56'52"W - 661.32
- ③ N00°07'12"W - 660.81
- ② S89°57'20"W - 330.70

- SECTION 12
- D-1 S89°57'20"E - 1843.85
- D-2 N12°03'40"E - 646.74
- D-3 N28°13'40"E - 107.10
- D-4 N12°40'20"E - 1205.95
- D-5 R=2689.79 - L=1235.89
- D-6 N38°30'35"E - 768.10
- N39°34'33"E - 170.55
- D-7 N45°04'33"E - 144.86
- D-8 N36°33'33"E - 154.84
- D-9 N39°45'33"E - 420.94
- D-10 S89°10'27"E - 763.00
- ⑧ S00°58'26"W - 660.11
- ⑨ N89°00'49"W - 662.00
- ⑩ S00°50'11"W - 330.20
- ⑪ N88°59'52"W - 331.81
- ⑫ S00°58'34"W - 660.21



NOTE: FOR DETAIL OF TOPO SEE SHT 2 OF 7

TOTAL ACRES - 340.56  
 147.78 ACRES BELOW  
 592° ELEV.

BASIS OF BEARINGS AS PER C OF E BNDRY. PLATS & BOOKS!

SHT. 1 OF 2

Field Book No. 5-1829 5-1930  
 5-1931 5-1933 Date 12 / 88

CERTIFICATE OF SURVEY  
 I Herby Certify That The Above Plat is a True and Correct Representation of the Survey of  
 BASIL E. SCOTT JR. L.S. 545

SCOTT & ASSOCIATES, INC.  
 LAND SURVEYORS  
 U.S. ARMY CORPS OF ENGINEERS  
 TULSA DISTRICT

- LEGEND —
- △ C of E BRASS CAP
  - ORIGINAL CORNER
  - IRON PIN W/CAP
  - ⊗ O.H.D.-R/W MARKER

# REFERENCES

## PARTIAL BOUNDARY SURVEYS

FT. GIBSON LAKE OKLA.

**PARCEL #71**

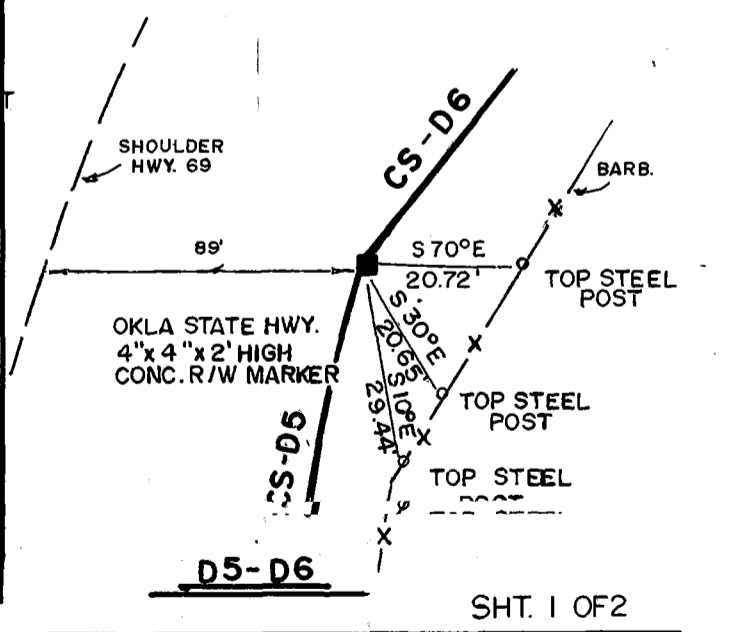
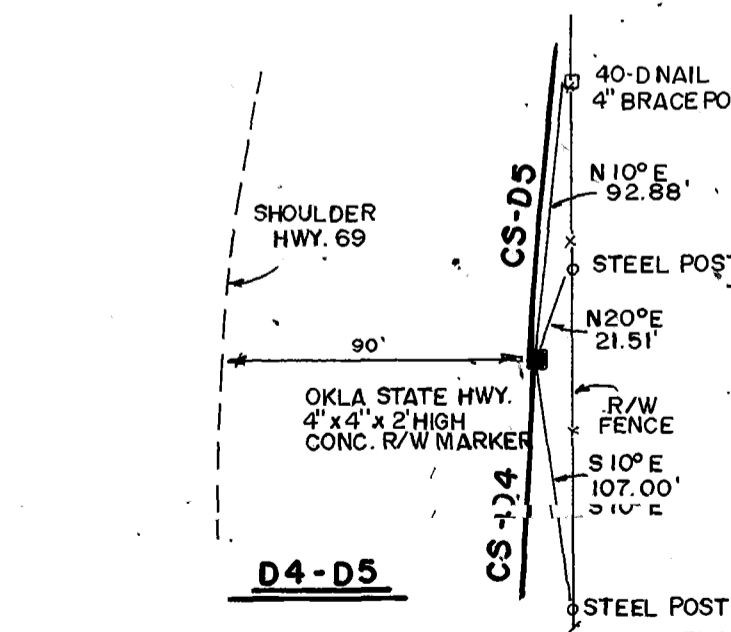
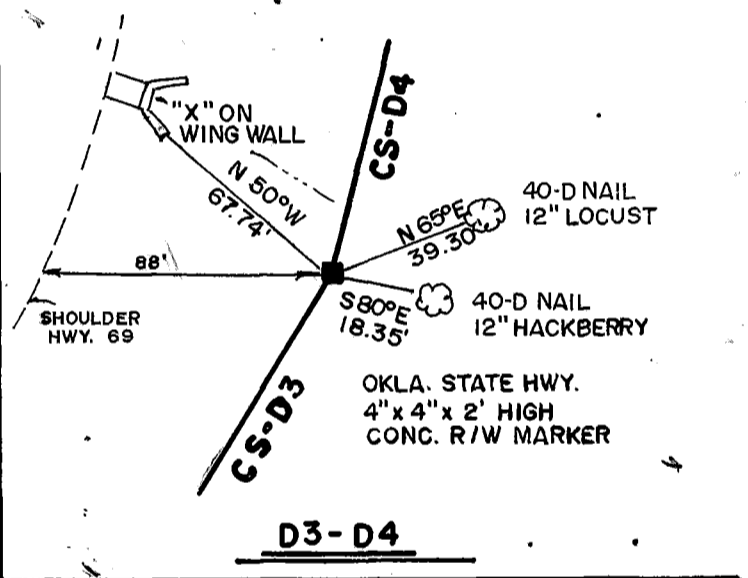
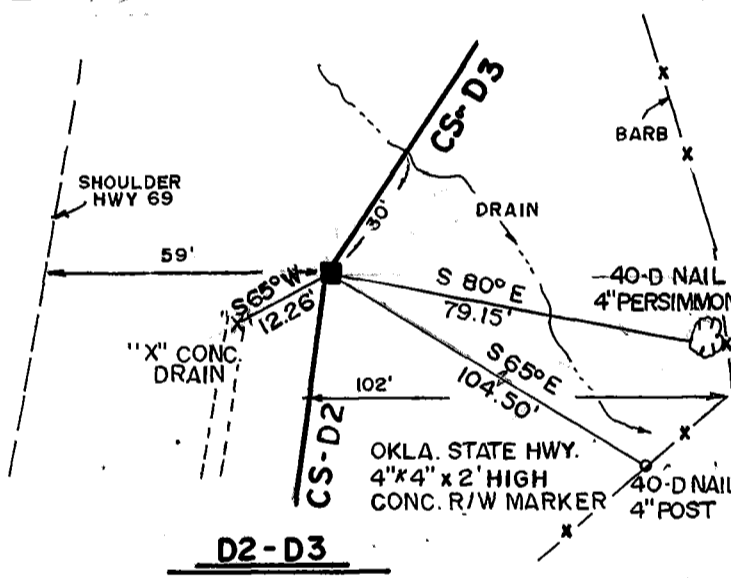
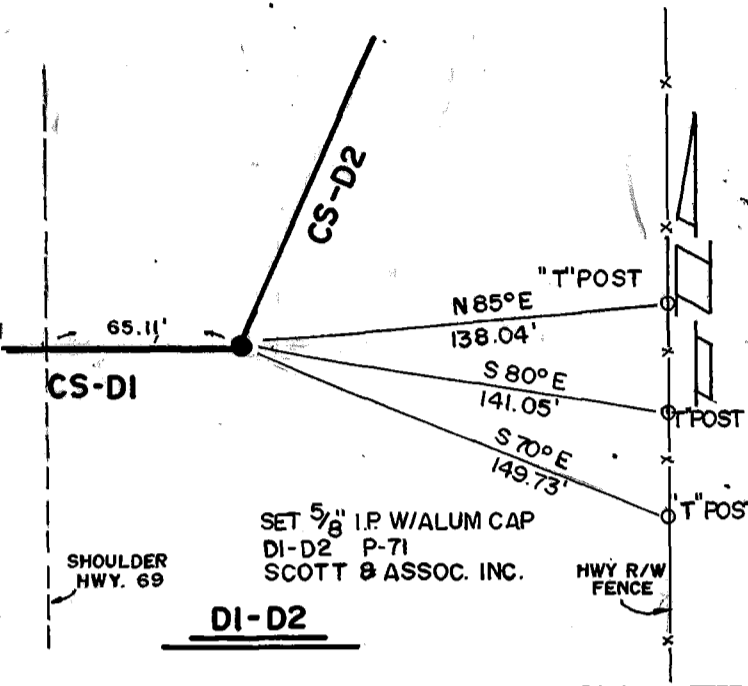
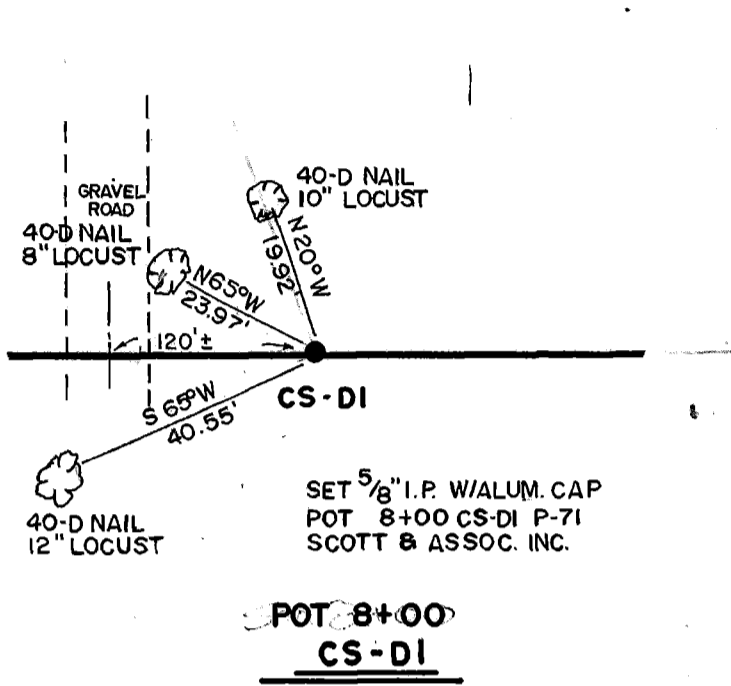
SEC. II T-19-N R-18-E

12, 13, 14

**COUNTY MAYES**

D.O. NO. 0002

Performed Under Contract No. DACA 56-88-D-0047



Field Book No. 5-1931 Date 12-88

**CERTIFICATE OF SURVEY**

I hereby certify that the above plat is a true and correct representation of the survey.

**SCOTT & ASSOCIATES INC.  
LAND SURVEYORS**

— LEGEND —

- △ CofE BRASS CAP
- ORIGINAL CORNER
- IRON PIN W/CAP

**U.S. ARMY CORPS OF ENGINEERS  
TULSA DISTRICT**

*Basil E. Scott Jr.*  
BASIL E. SCOTT JR. L.S. 545

# REFERENCES

## PARTIAL BOUNDARY SURVEYS

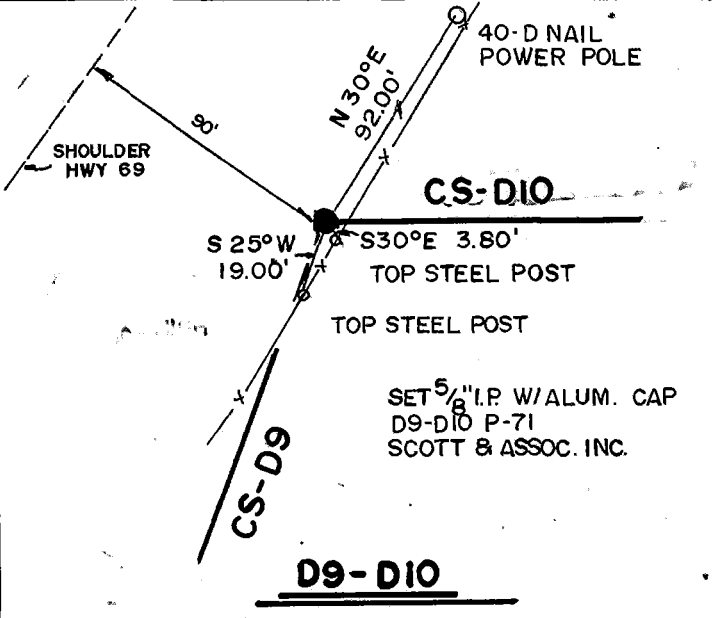
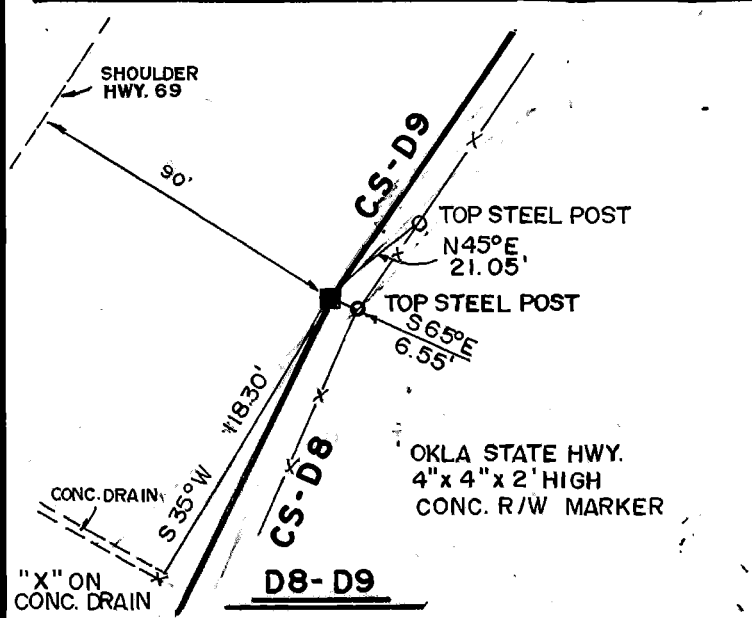
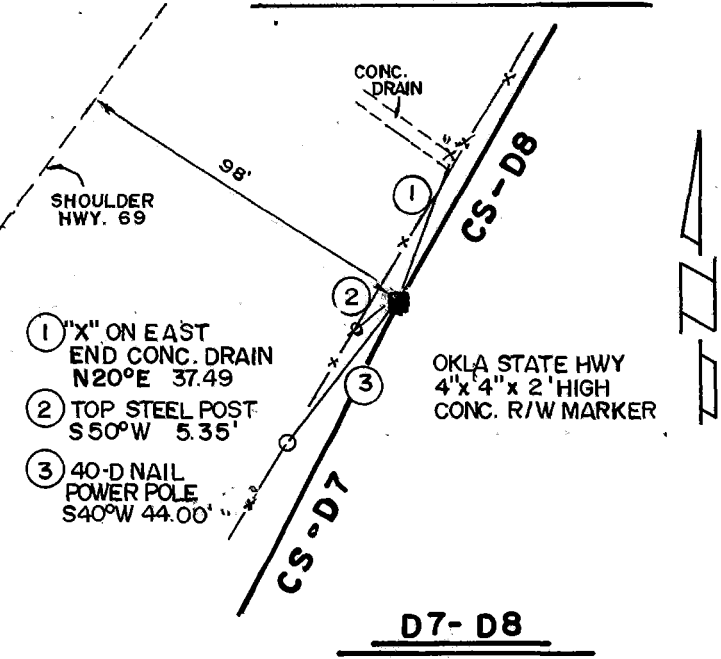
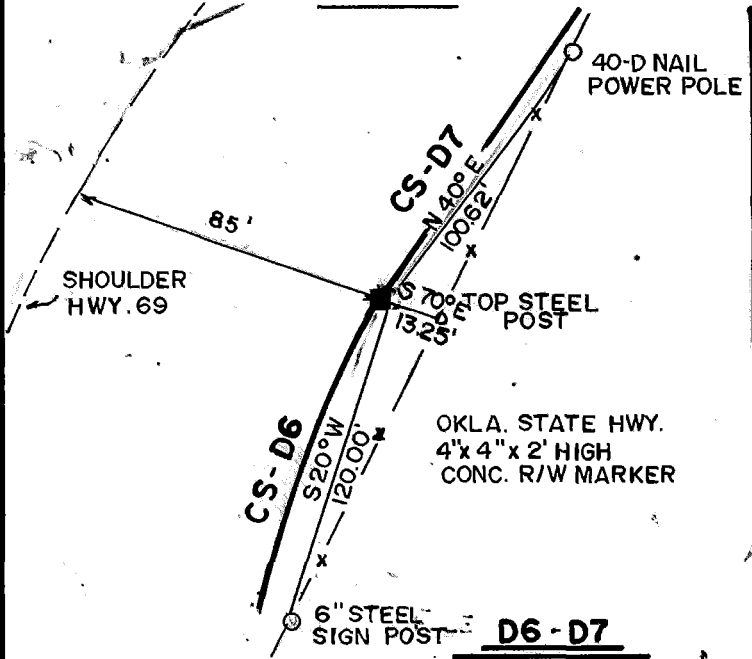
FT. GIBSON LAKE OKLA.

PARCEL # 71 SEC. 11 T-19-N R-18-E  
12,13,14

COUNTY MAYES

D.O. NO. 0002

Performed Under Contract No. DACA 56-88-D-0047



SHT. 2 OF 2

Field Book No. 5-1931 Date 12-88

**CERTIFICATE OF SURVEY**

I Hereby Certify That The Above Plat is a True and Correct Representation of the Survey.

*Basil E. Scott Jr.*  
BASIL E. SCOTT JR. L.S. 545

**SCOTT & ASSOCIATES INC.**  
LAND SURVEYORS

U.S. ARMY CORPS OF ENGINEERS  
TULSA DISTRICT

— LEGEND —

- △ Cof E BRASS CAP
- ORIGINAL CORNER
- IRON PIN W/CAP