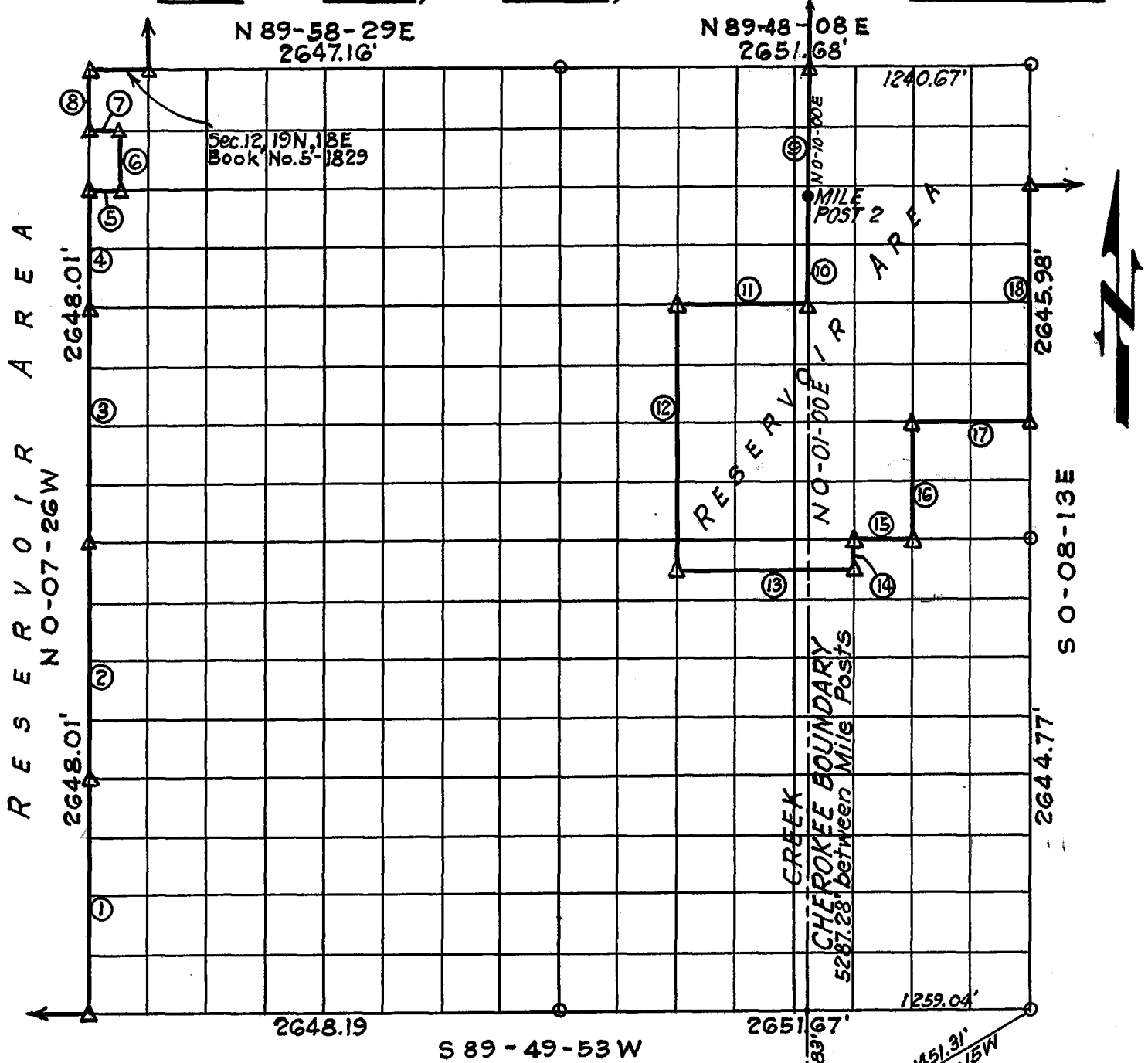


PARTIAL BOUNDARY SURVEYS
FORT GIBSON LAKE, AREA "A"
OKLAHOMA

Performed under Contract Number DACW56-77-C-0058
SEC. 13, T. 19N., R. 18E., COUNTY MAYES

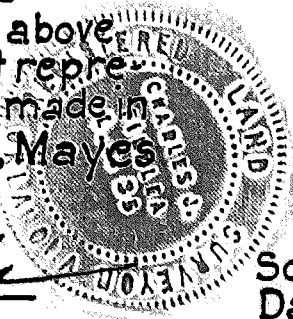


Course No.	Distance	Bearing	Course No.	Distance	Bearing
1	1324.01'	N 0-07-26W			
2	1324.00'	N 0-07-26W			
3	1324.01'	N 0-07-26W	11	742.50'	S 89-50-04W
4	662.01'	N 0-07-26W	12	1487.24'	S 0-08-08E
5	165.46'	N 89-56-51E	13	994.41'	N 89-51-51E
6	330.96'	N 0-07-29W	14	165.32'	N 0-08-10W
7	165.45'	S 89-57-40W	15	331.47'	N 89-51-59E
8	331.00'	N 0-07-26W	16	661.31'	N 0-08-11W
9	720.71'	S 0-10-00W	17	662.94'	N 89-51-01E
10	601.62'	S 0-01-00W	18	1323.08'	N 0-08-13W

Certificate of Survey

I hereby certify that the above plat is a true and correct representation of the survey made in Section 13, T. 19N. R. 18E., Mayes County, Oklahoma

Charles J. Finklea
 Charles J. Finklea
 Registered Land Surveyor No. 35



Scale:- 1:10,000
 Date:- May 1977
 Field Book No. 5-1930

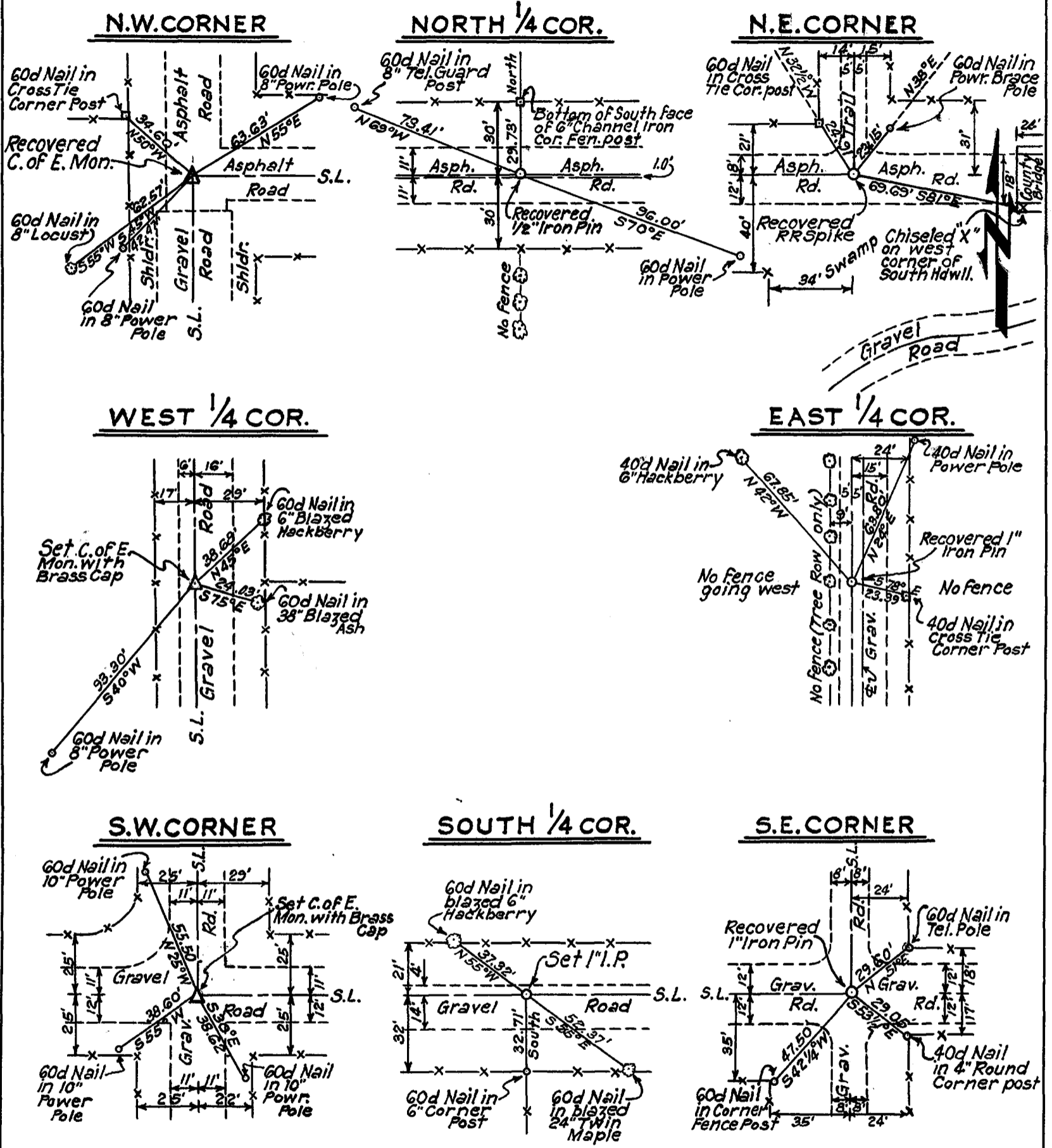
Sheet 1 of 2

Legend

- △ Monument
- Orig. Corner
- Iron Pin
- ▲ Mon. by O.H.D.

FORT GIBSON LAKE, AREA "A" OKLAHOMA

SECTION AND QUARTER SECTION CORNER REFERENCES FOR SECTION 13, T. 19 N., R. 18 E., COUNTY MAYES



Sheet 2 of 2

Scale: - 1" = 50'
Date: - May 1977
Field Book No. 5-1930

Certificate of Survey

I hereby certify that the above plat is a true and correct representation of the survey made in Sec. 13, T. 19 N., R. 18 E., Mayes County, Oklahoma

Charles J. Finklea
Charles J. Finklea
Registered Land Surveyor No. 35



Legend

- △ Monument
- Orig. Corner
- Iron Pin
- ▲ Mon. by O.H.D.