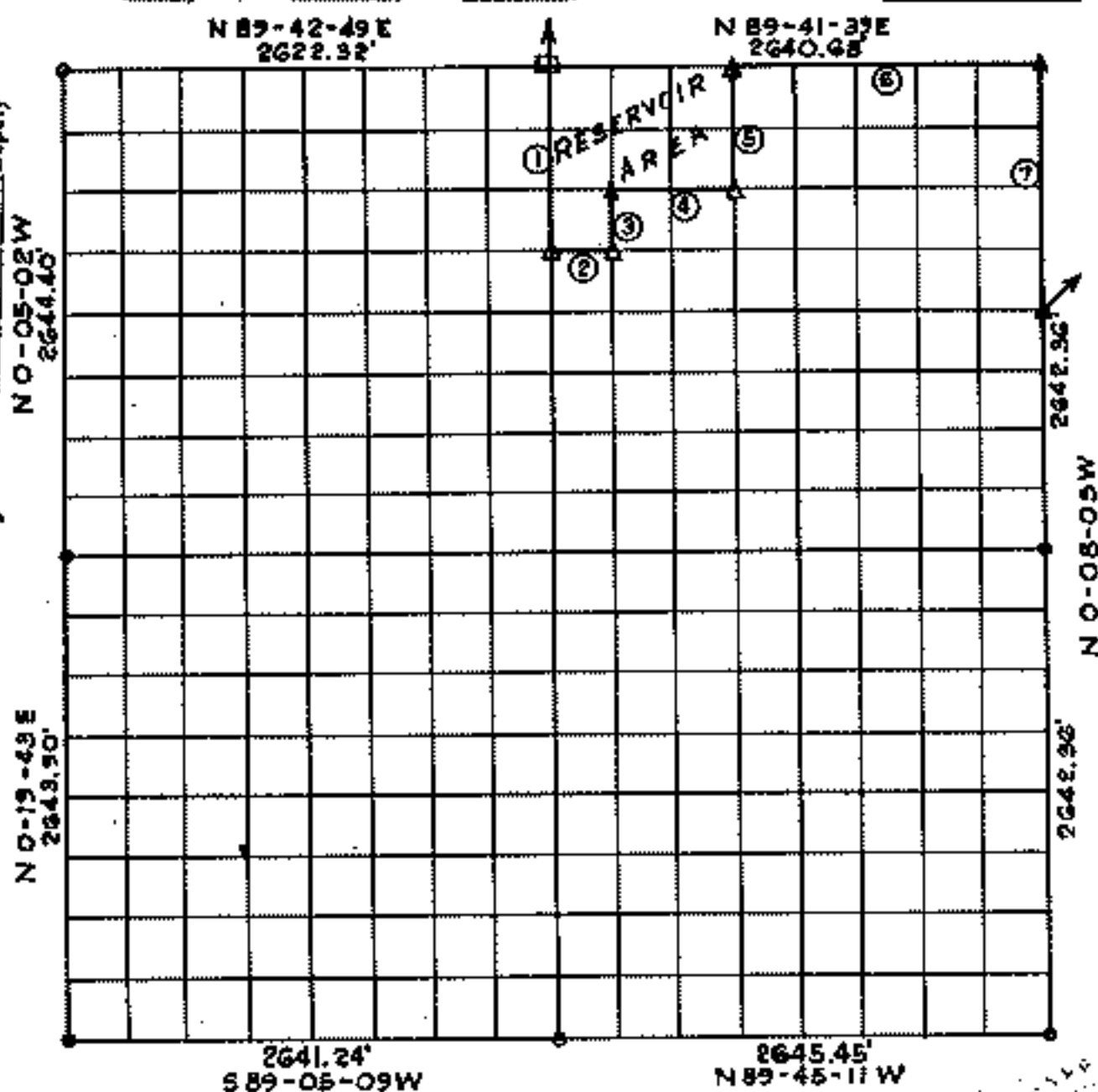


# FORT GIBSON LAKE, AREA "A" OKLAHOMA

Performed under Contract Number DACW56-77-C-0058  
SEC. 15, T. 19 N., R. 18 E., COUNTY MAYES

Filed 7 day of June 1977, Mayes County, Okla.  
From Book A-M Book Page Samany Howard, Co. Clk.  
By *Charles J. Finklea* Deputy



Course No.	Distance	Bearing	Course No.	Distance	Bearing
1	991.10'	S 0-04-48 E			
2	330.20'	N 89-41-22 E			
3	330.34'	N 0-05-13 W			
4	660.33'	N 89-41-28 E			
5	660.68'	N 0-07-02 W			
6	1650.43'	N 89-41-39 E			
7	1321.18'	S 0-08-05 E			

### Certificate of Survey

I hereby certify that the above plat is a true and correct representation of the survey made in Section 15, T. 19 N., R. 18 E., Mayes County, Oklahoma.

*Charles J. Finklea*  
Charles J. Finklea  
Registered Land Surveyor No. 35

Scale: - 1:10,000  
Date: - May 1977  
Field Book No. 5-1932

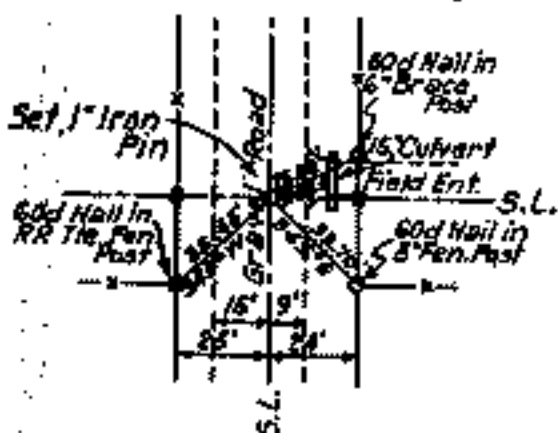
Sheet 1 of 2

### Legend

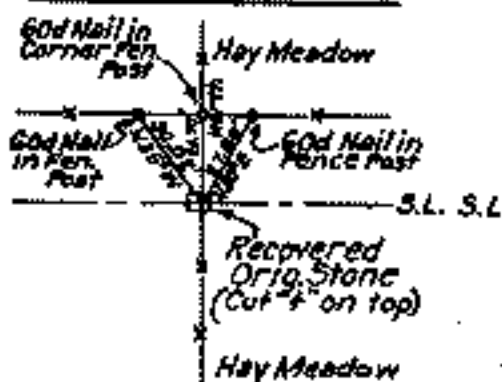
- ▲ Monument
- Orig. Corner
- Iron Pin
- ▲ Mon. by O.H.D.

SECTION AND QUARTER SECTION CORNER  
REFERENCES FOR  
SECTION 15, T.19N., R.18E., COUNTY MAYES

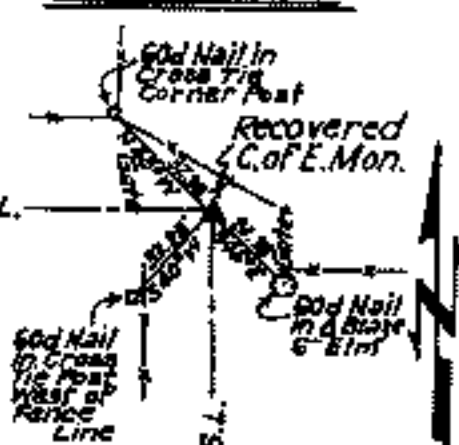
N.W. CORNER



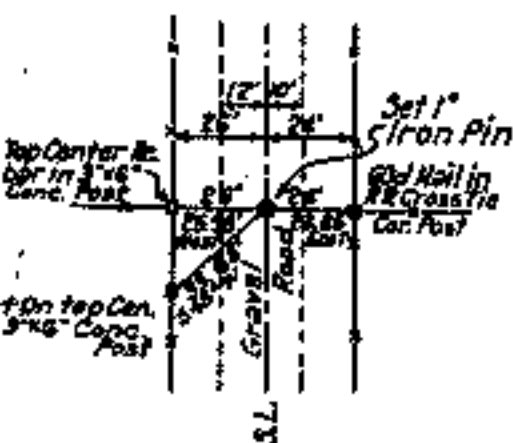
NORTH 1/4 COR.



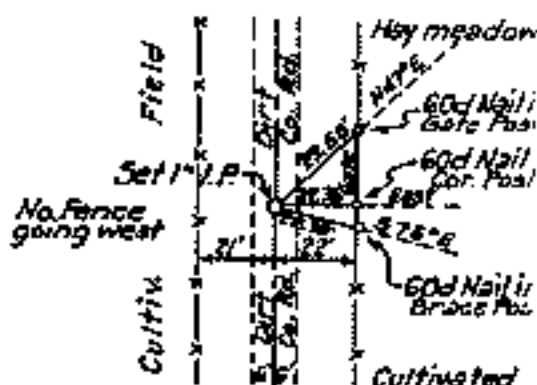
N.E. CORNER



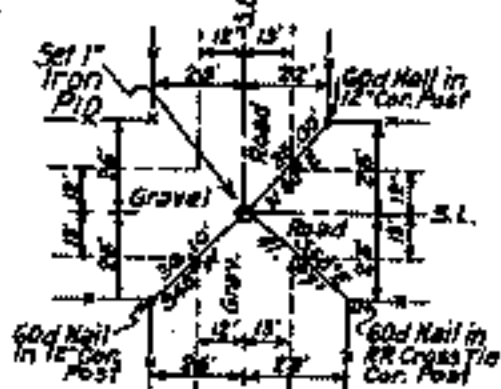
WEST 1/4 COR.



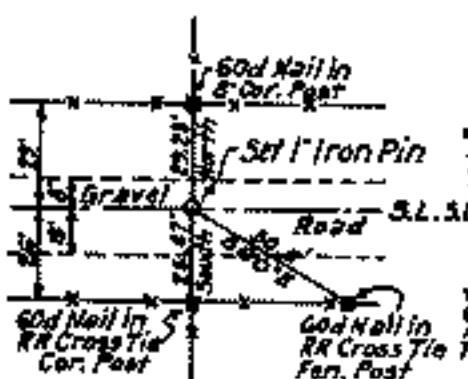
EAST 1/4 COR.



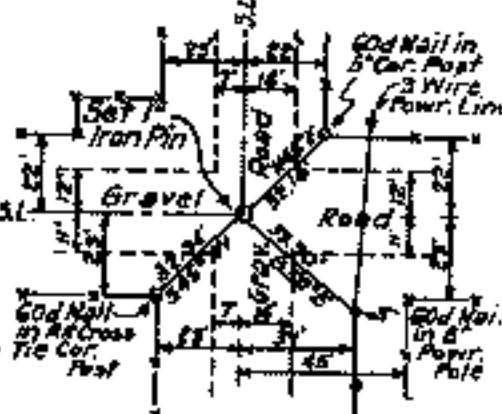
S.W. CORNER



SOUTH 1/4 COR.



S.E. CORNER



Sheet 2 of 2

Certificate of Survey

I hereby certify that the above plat is a true and correct representation of the survey made in Section 15, T.19N., R.18E., Mayes County, Oklahoma

*Charles J. Finkles*  
Charles J. Finkles  
Registered Land Surveyor No. 35

Scale: - 1" = 50'  
Date: - May 1977  
Field Book No. 5-1932

Legend

- ▲ Monument
- Orig. Corner
- Iron Pin
- ▲ Mon. by O.H.D.

