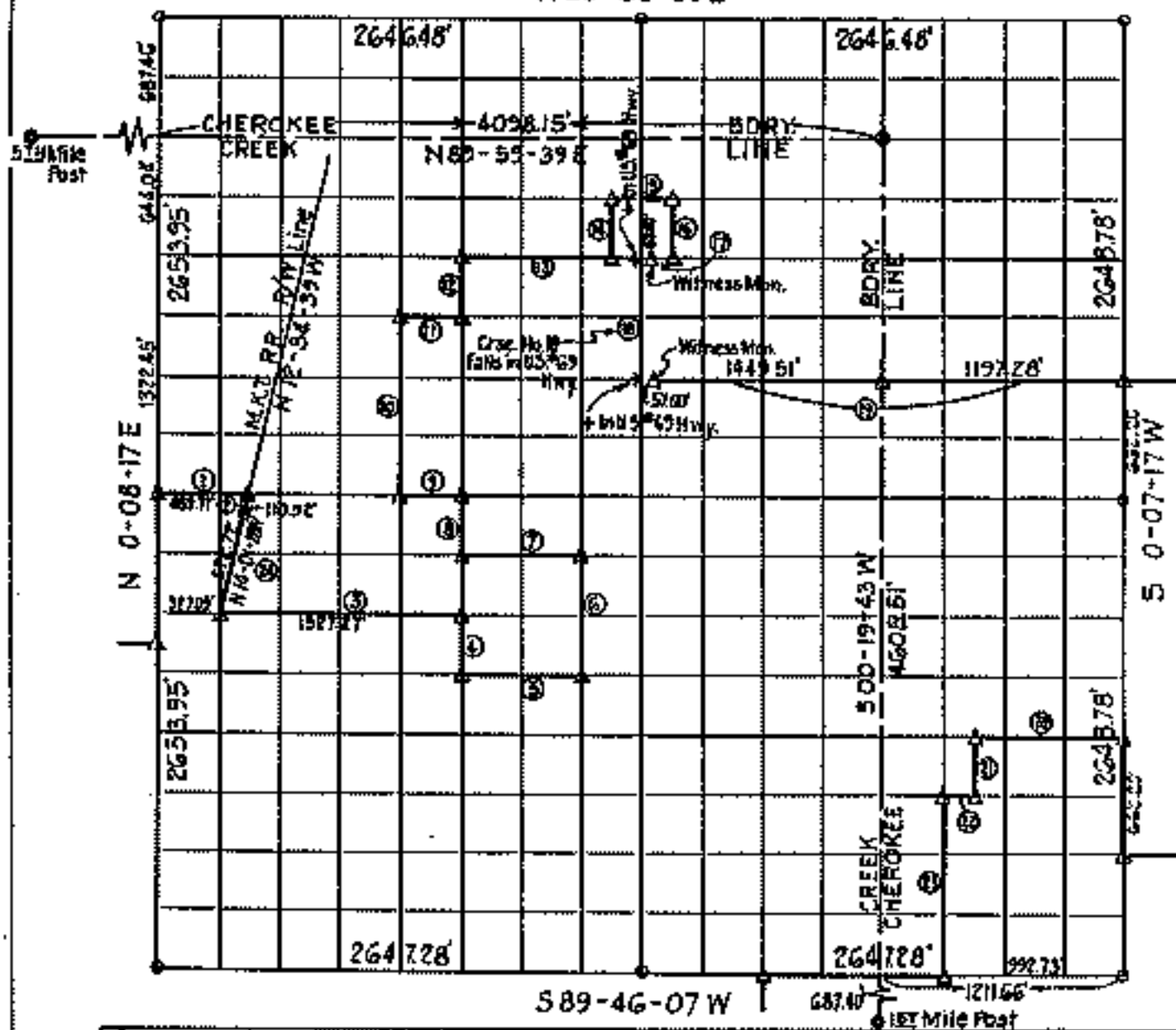


N 89-52-50E



Course Number	Distance	Bearing	Course Number	Distance	Bearing
1	680.43	N 89° 49' 28" E	12	370.77	N 0° 07' 56" E
2	110.92	S 12° 34' 39" W	13	827.51	N 89° 46' 13" E
2A	572.72	S 14° 01' 20" W	14	330.00	N 0° 07' 47" E
3	1327.27	N 89° 48' 38" E	15	330.00	N 89° 48' 13" E
4	331.54	S 0° 07' 50" E	16	330.00	S 0° 07' 47" E
5	661.76	N 89° 48' 13" E	17	105.00	S 89° 48' 13" W
6	662.92	N 0° 07' 51" E	18	661.71	S 0° 07' 47" E
7	661.71	S 89° 49' 03" W	19	2646.79	N 89° 48' 50" E
8	332.10	N 0° 07' 50" E	20	826.25	S 89° 47' 40" E
9	330.70	S 89° 49' 28" E	21	330.00	S 0° 07' 23" E
10	990.48	N 0° 08' 02" E	22	165.15	S 89° 47' 23" W
11	329.03	N 89° 48' 32" E	23	991.66	S 0° 07' 20" E

Book No. 5-1832

Date: October, 1971

I, Charles J. Finkles, hereby certify that the above plat is a true and correct representation of the survey made in Section 1, T19N, R18E.



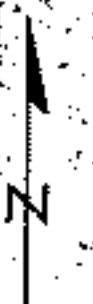
Charles J. Finkles
 Registered Land Surveyor No. 35

- △ M
- C
- H
- O
- G

△ Line Conc. Mon.
 □ Line Mile Post in place

SCALE: 1"=1000'

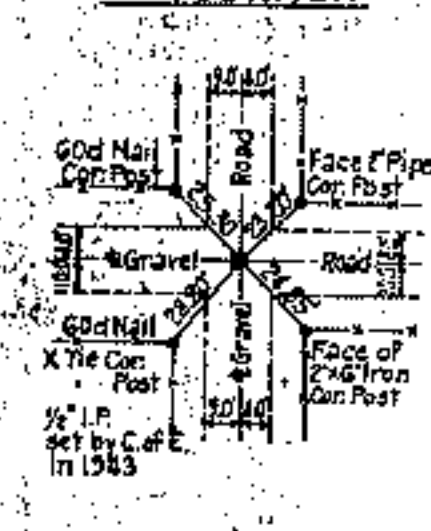
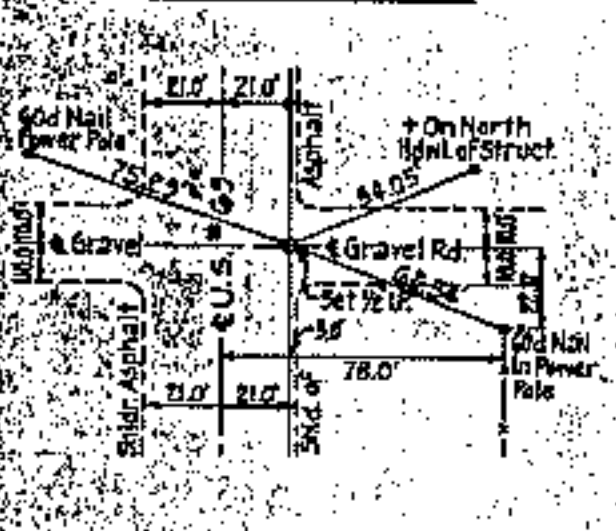
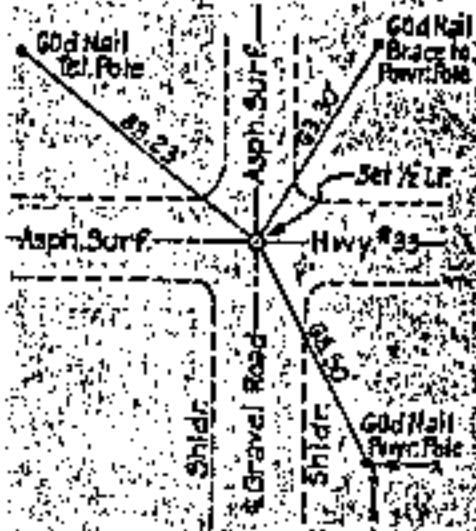
**FORT GIBSON LAKE
GRAND RIVER, OKLAHOMA
SECTION AND QUARTER SECTION CORNER
REFERENCES FOR
SEC. 1, T. 19N, R. 18E
COUNTY MAYES**



N.W. CORNER

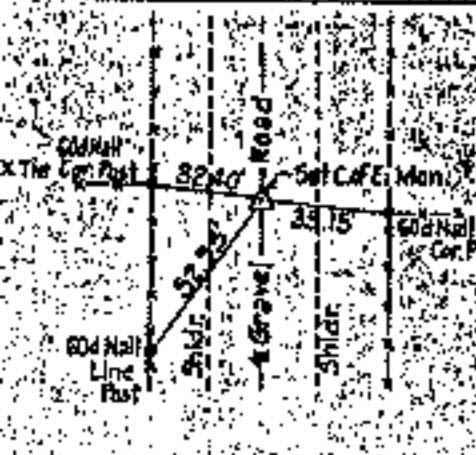
NORTH 1/4 CORNER

N.E. CORNER



**WEST 1/4 CORNER
BOUNDARY CORNER**

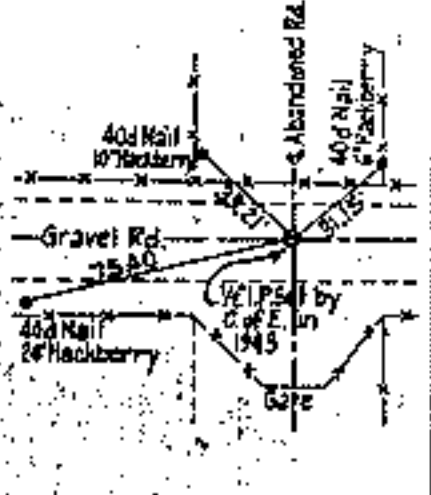
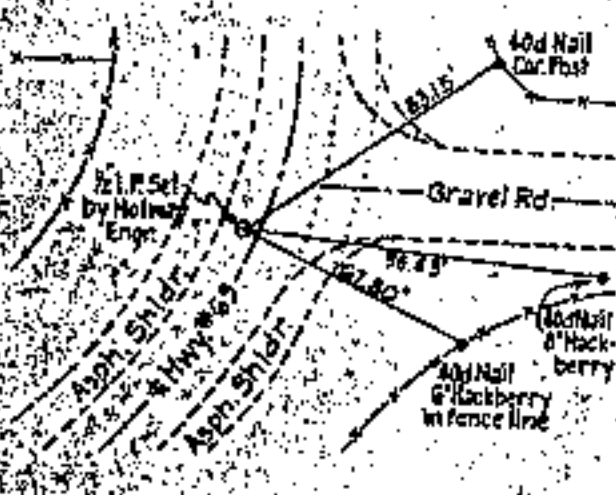
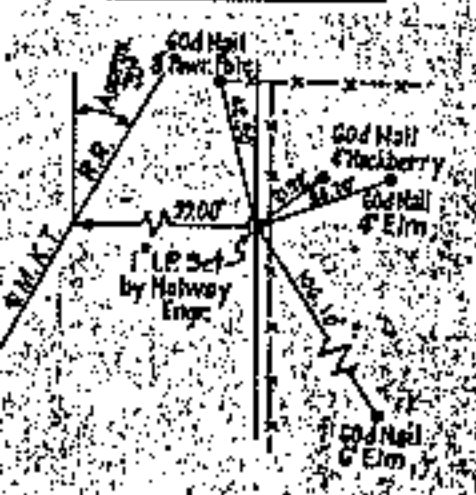
EAST 1/4 CORNER



S.W. CORNER

SO. 1/4 CORNER

S.E. CORNER



SAN JUAN ENGINEERING CO.

Scale: 1" = 50'
Date: Oct. 1971
Field Book No. 5-1832

- LEGEND**
- ▲ Monument
 - Original Corner
 - Iron Pin