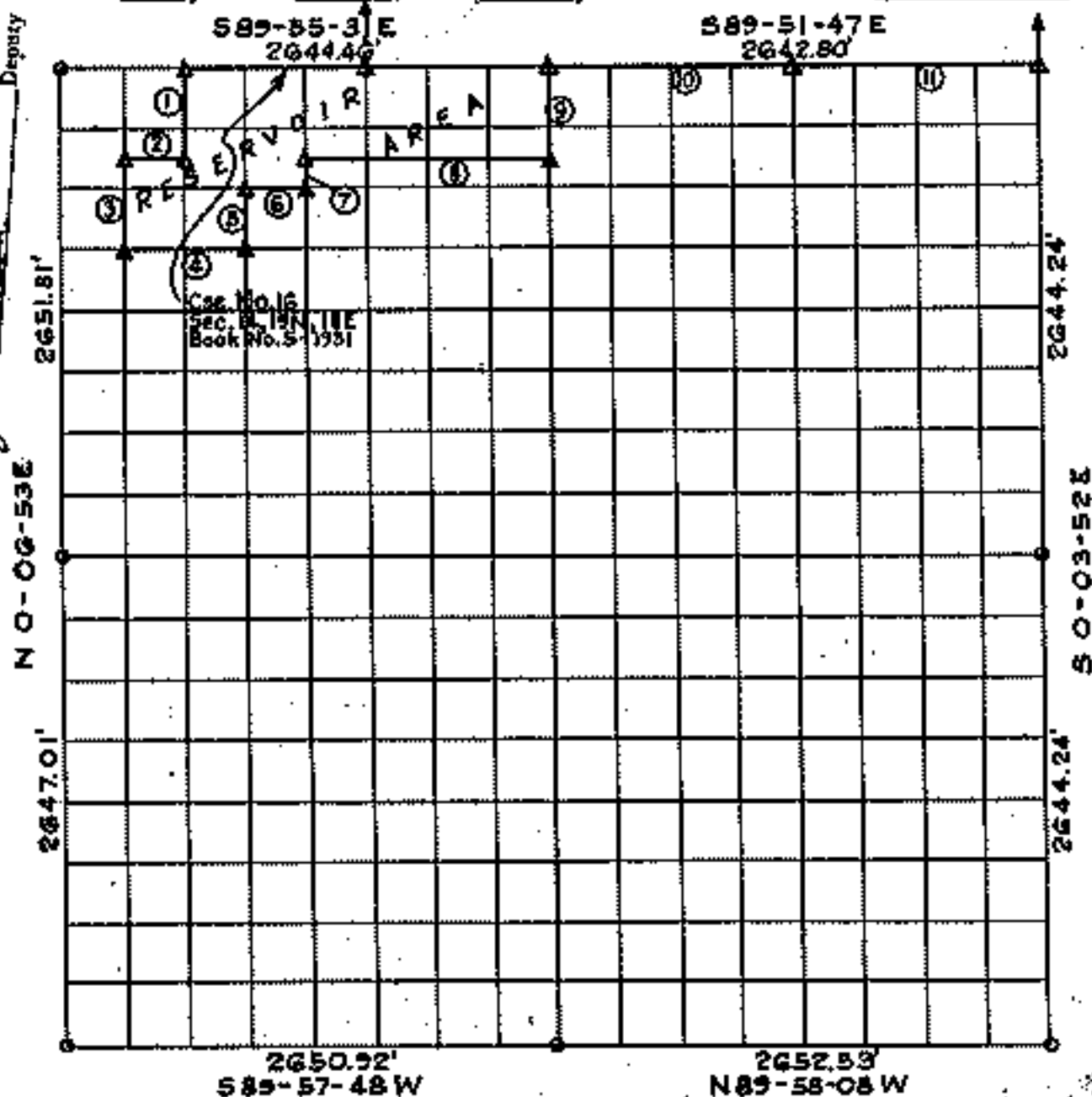


# FORT GIBSON LAKE, AREA "A" OKLAHOMA

Performed under Contract Number DACW56-77-C-0058  
SEC. 23, T. 19 N., R. 18 E., COUNTY MAYES



Course No.	Distance	Bearing	Course No.	Distance	Bearing
1	497.10'	S 0-05-50 W			
2	330.61'	N 89-56-05 W			
3	497.16'	S 0-06-21 W			
4	661.32'	S 89-56-40 E			
5	331.37'	N 0-05-18 E			
6	330.63'	S 89-56-17 E			
7	165.66'	N 0-04-47 E			
8	1322.03'	S 89-56-05 E			
9	496.77'	N 0-02-41 E			
10	1321.40'	S 89-51-47 E			
11	1321.40'	S 89-51-47 E			

### Certificate of Survey

I hereby certify that the above plat is a true and correct representation of the survey made in Section 23, T. 19 N., R. 18 E., Mayes County, Oklahoma

Sheet 1 of 2

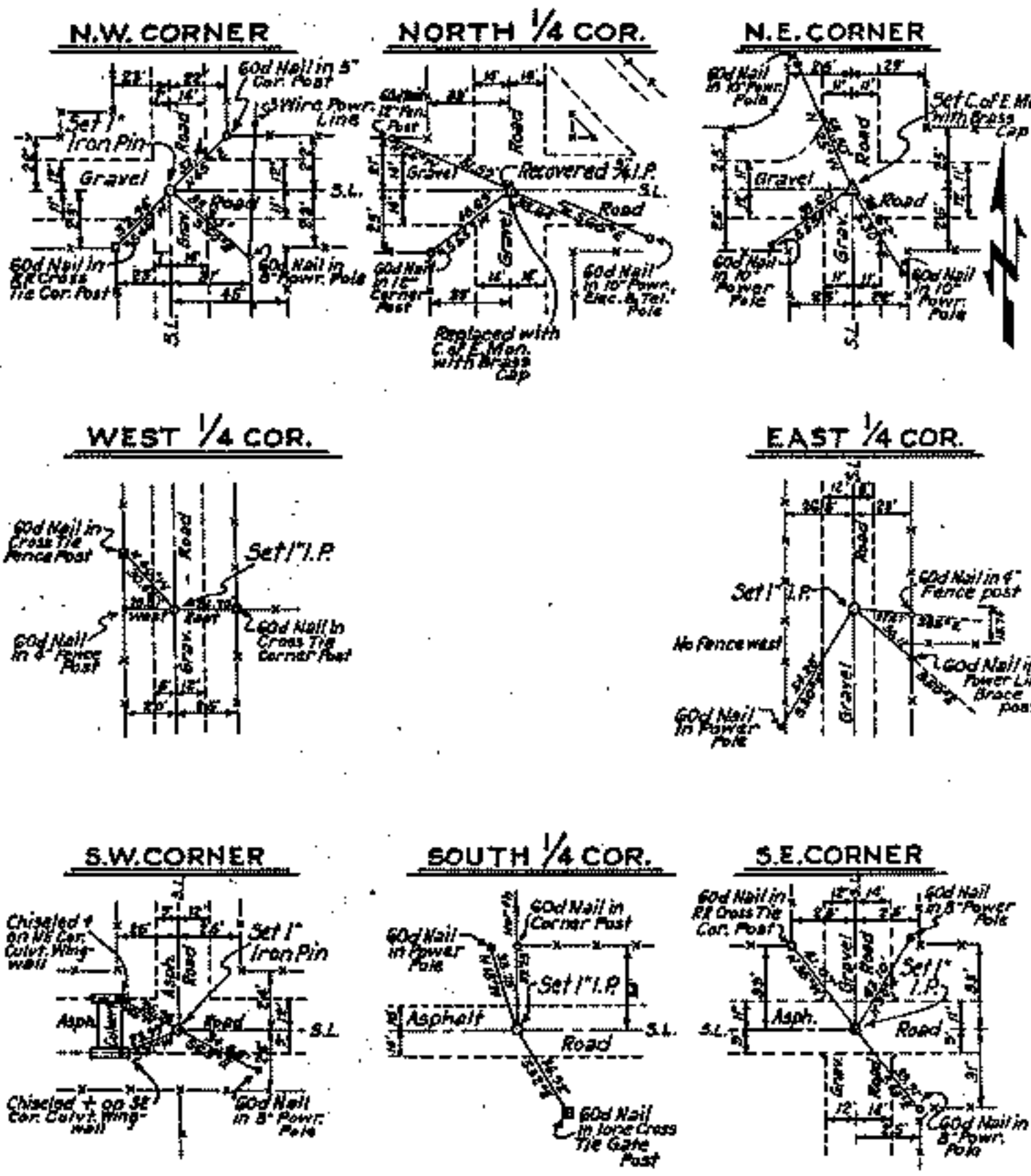
### Legend

- △ Monument
- Orig. Corner
- Iron Pin

Scale: 1:10,000  
Date: May 1977

Filed 7 day of June 1977 Mayes County, Okla.  
 9 o'clock A.M. Book Page Sammy Howard, Co. Clerk  
 By Deputy

SECTION AND QUARTER SECTION CORNER  
 REFERENCES FOR  
 SECTION 23, T.19N., R.18E., COUNTY MAYES



Sheet 2 of 2  
 Scale: 1" = 50'  
 Date: May 1977  
 Field Book No. 5-193

Certificate of Survey  
 I hereby certify that the above plat is a true and correct representation of the survey made in Section 23, T.19 N., R.18 E., Mayes County, Oklahoma.

*Charles J. Finklea*  
 Charles J. Finklea



- Legend
- ▲ Monument
  - Orig. Corner
  - Iron Pin
  - Mon. by O.H.P.