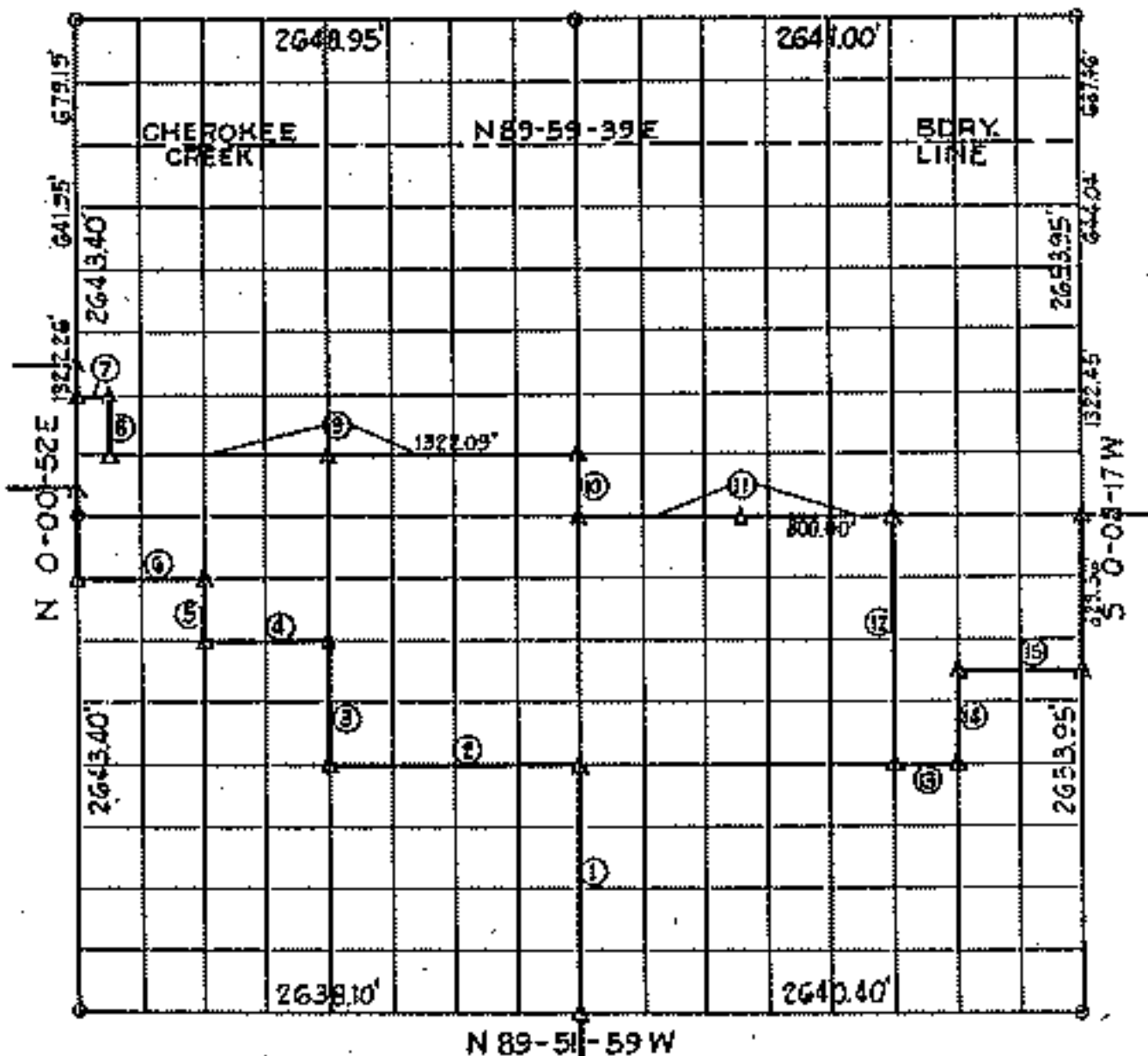


N 89-54-17E



N 89-51-59W

Course Number	Distance	Bearing	Course Number	Distance	Bearing
1	1324.72	N 0° 07' 55" E	13	330.08	S 09° 55' 24" E
2	1320.20	N 09° 55' 24" W	14	697.37	N 0° 08' 13" E
3	662.51	N 0° 08' 24" E	15	660.17	S 09° 55' 43" E
4	660.51	N 09° 57' 07" W			
5	330.58	N 0° 02' 38" E			
6	660.71	N 09° 57' 59" W			
7	165.31	S 09° 58' 55" E			
8	330.57	S 0° 02' 18" W			
9	2478.92	S 09° 50' 53" E			
10	330.35	S 0° 07' 55" W			
11	1850.80	S 09° 50' 51" E			
12	1325.99	S 0° 08' 09" W			

Book No. 5-3833

Date: October, 1971

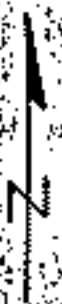
I, Charles J. Finkles, hereby certify that the above plat is a true and correct representation of the survey made in Section 2, T19N, R18E.



*Charles J. Finkles*  
 Registered Land Surveyor No. 35

- LEGEND**
- △ Monument
  - Original Corner
  - Iron Pin

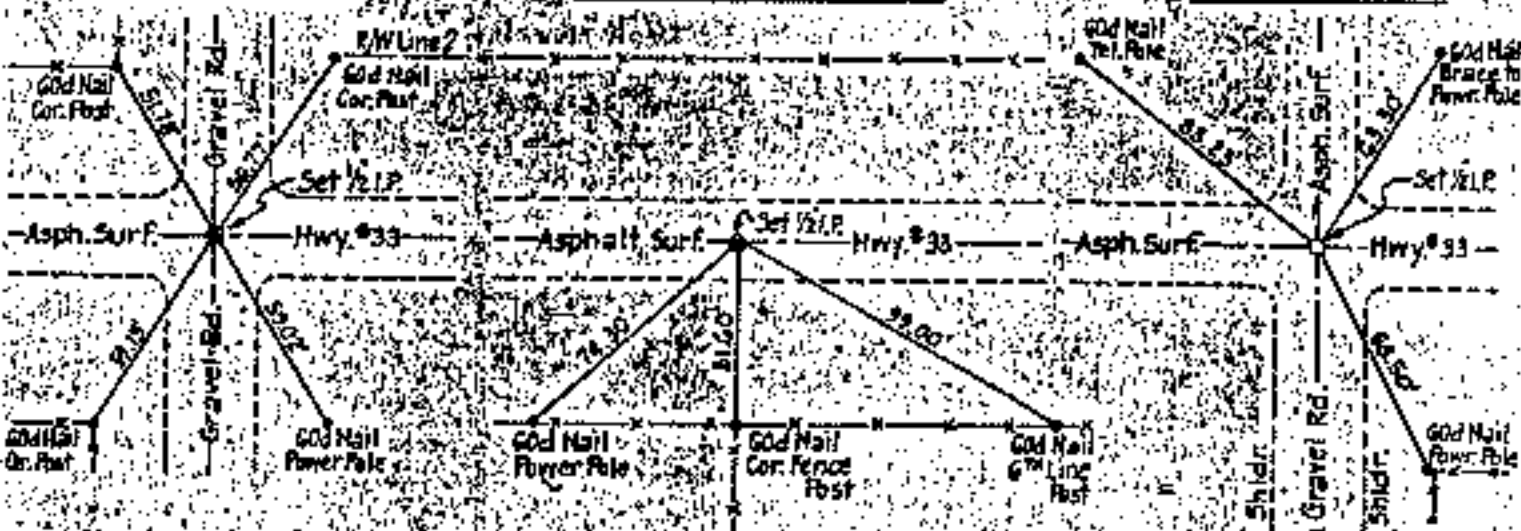
FORT GIBSON LAKE  
 GRAND RIVER, OKLAHOMA  
 SECTION AND QUARTER SECTION CORNER  
 REFERENCES FOR  
 SEC. 2, T. 19N, R. 18E COUNTY MAYES



N.W. CORNER

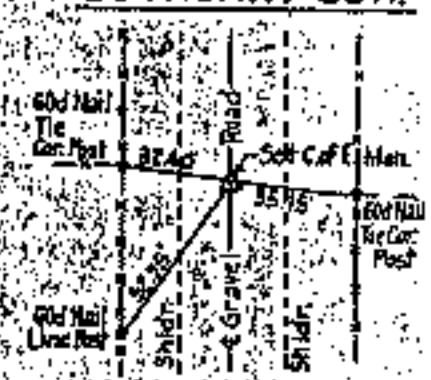
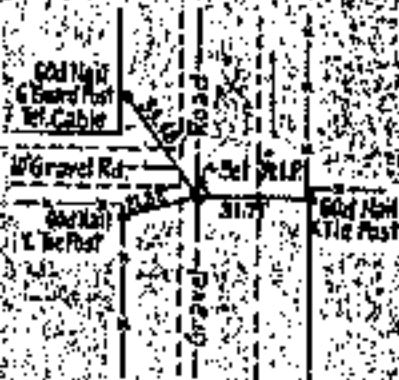
NORTH 1/4 CORNER

N.E. CORNER



WEST 1/4 CORNER

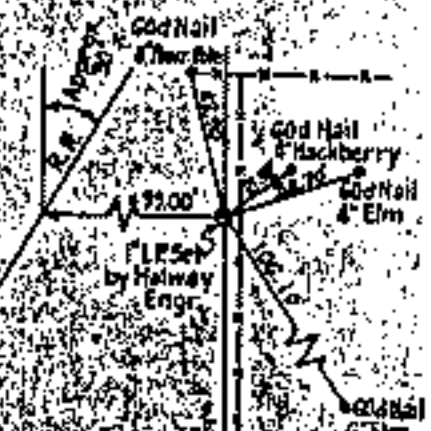
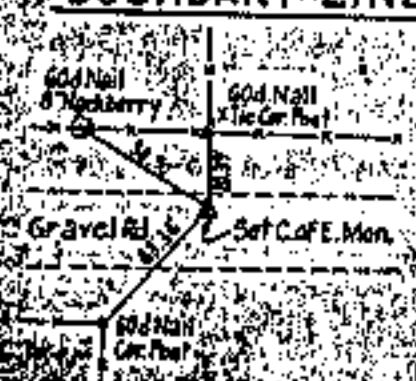
EAST 1/4 CORNER BOUNDARY COR.



S.W. CORNER

SOUTH 1/4 CORNER BOUNDARY LINE

S.E. CORNER

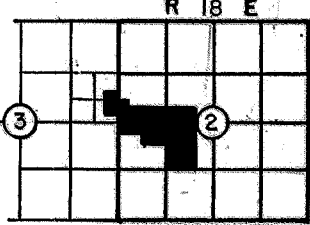


SAN JUAN ENGINEERING Co.

Scale: 1" = 50'  
 Date: Oct. 1971  
 Field Book No. 5-1833

LEGEND

- △ Monument
- Original Corner
- Iron Pin



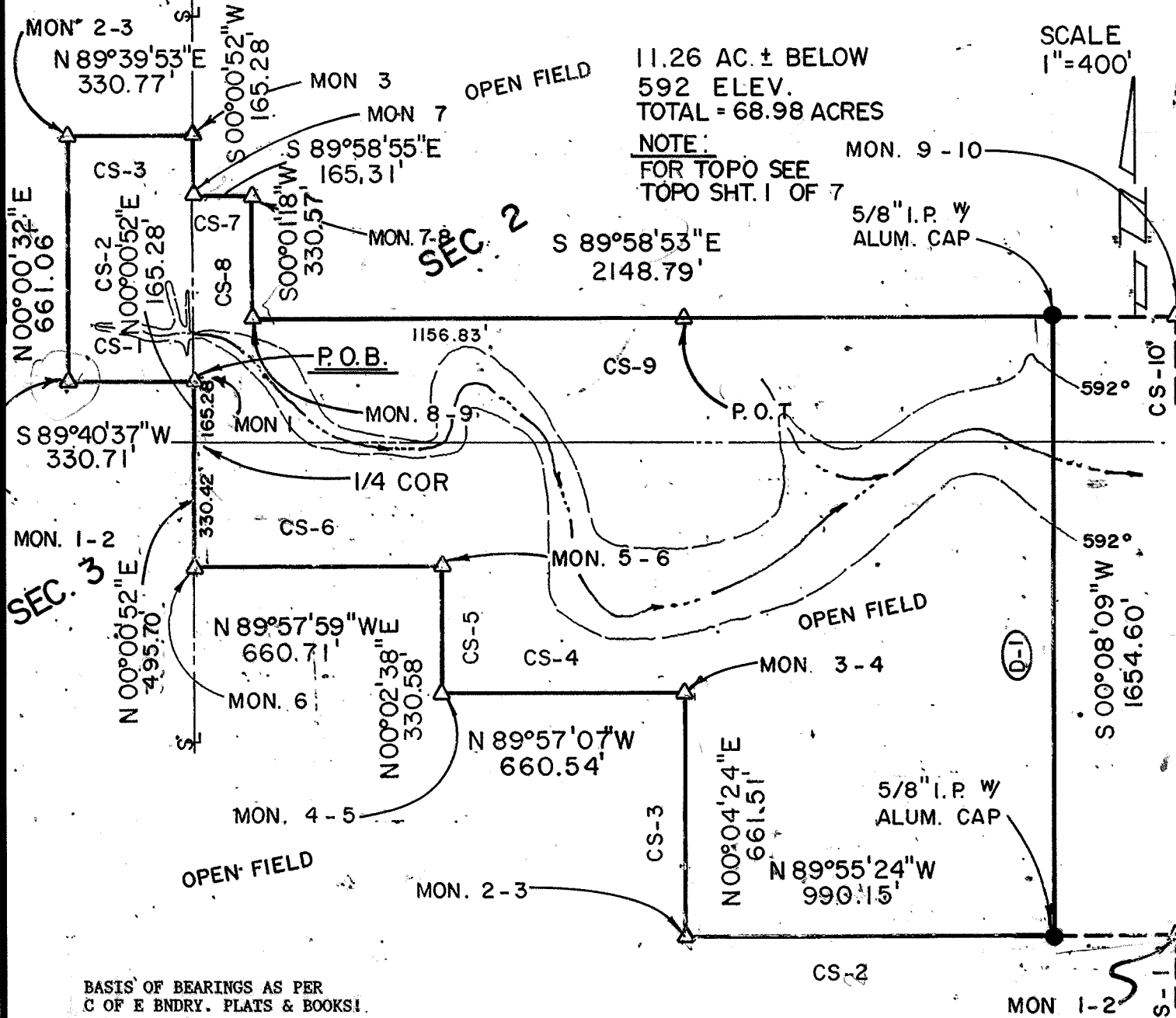
PARTIAL BOUNDARY SURVEYS  
 FT. GIBSON LAKE OKLA.  
 SEC. 2 T-19-N R-18-E  
 & 3

PARCEL 69

COUNTY MAYES

D.O. NO. 0002.

Performed Under Contract No. DACA 56-88-D-0047



BASIS OF BEARINGS AS PER  
 C OF E BNDRY. PLATS & BOOKS!

PARCEL #69 DESCRIPTION

Parcel #69 containing 68.98 acres, more or less, located in the S $\frac{1}{2}$  of the NW $\frac{1}{4}$ , and the N $\frac{1}{2}$  of the SW $\frac{1}{4}$  of Section 2 and the SE $\frac{1}{4}$  of the NE $\frac{1}{4}$  of Section 3, all in Township 19 North, Range 18 East, Indian Meridian, Mayes County, Oklahoma, described as: beginning at a point on the East line of Section 3, being a C of E boundary corner, -165.28 feet N00°00'52"E of the E $\frac{1}{2}$  corner of Section 3; thence S89°40'37"W, 330.71 feet (CS-1) of Section 3 to a C of E boundary corner (mon 1/2); thence N00°00'32"E, 661.06 feet (CS-2) of Section 3 to a C of E boundary corner (mon 2/3); thence N89°39'53"E, 330.77 feet (CS-3) of Section 3 to a C of E boundary corner (mon 3) on the section line and gravel road; thence S00°00'52"W, 165.28 feet along gravel road and section line to a C of E boundary corner (mon 7); thence S89°58'55"E, 165.31 feet (CS-7) of Section 2 to a C of E boundary corner (mon 7/8); thence S00°01'18"W, 330.57 feet (CS-8) of Section 2 to a C of E boundary corner (mon 8/9); thence S89°58'53"E, 2148.79 feet (CS-9) of Section 2 to a 5/8" iron pin with aluminum cap (CS-9); thence S00°08'09"W, 1654.60 feet (D-1) of Section 2 to a 5/8" iron pin with aluminum cap (CS-9); thence N89°55'24"W, 990.15 feet (CS-2) of Section 2 to a C of E boundary corner (mon 2/3); thence N00°04'24"E, 661.51 feet (CS-3) of Section 2 to a C of E boundary corner (mon 3/4); thence N89°57'07"W, 660.54 feet (CS-4) of Section 2 to a C of E boundary corner (mon 4/5); thence N00°02'38"E, 330.58 feet (CS-5) of Section 2 to a C of E boundary corner (mon 5/6); thence N89°57'59"W, 660.71 feet (CS-6) of Section 2 to a C of E boundary corner (mon 6) on the section line and gravel road; thence N00°00'52"E, 495.70 feet along section line and gravel road to the point of beginning.

Field Book No. 5-1833 Date 12/88

CERTIFICATE OF SURVEY

I Herby Certify That The Above Plat is a True and Correct Representation of the Survey.

BASIL E. SCOTT JR. L.S. 545

SCOTT & ASSOCIATES, INC.  
 LAND SURVEYORS

U.S. ARMY CORPS OF ENGINEERS  
 TULSA DISTRICT

— LEGEND —

- △ C of E BRASS CAP
- ORIGINAL CORNER
- IRON PIN W/CAP



REFERENCES

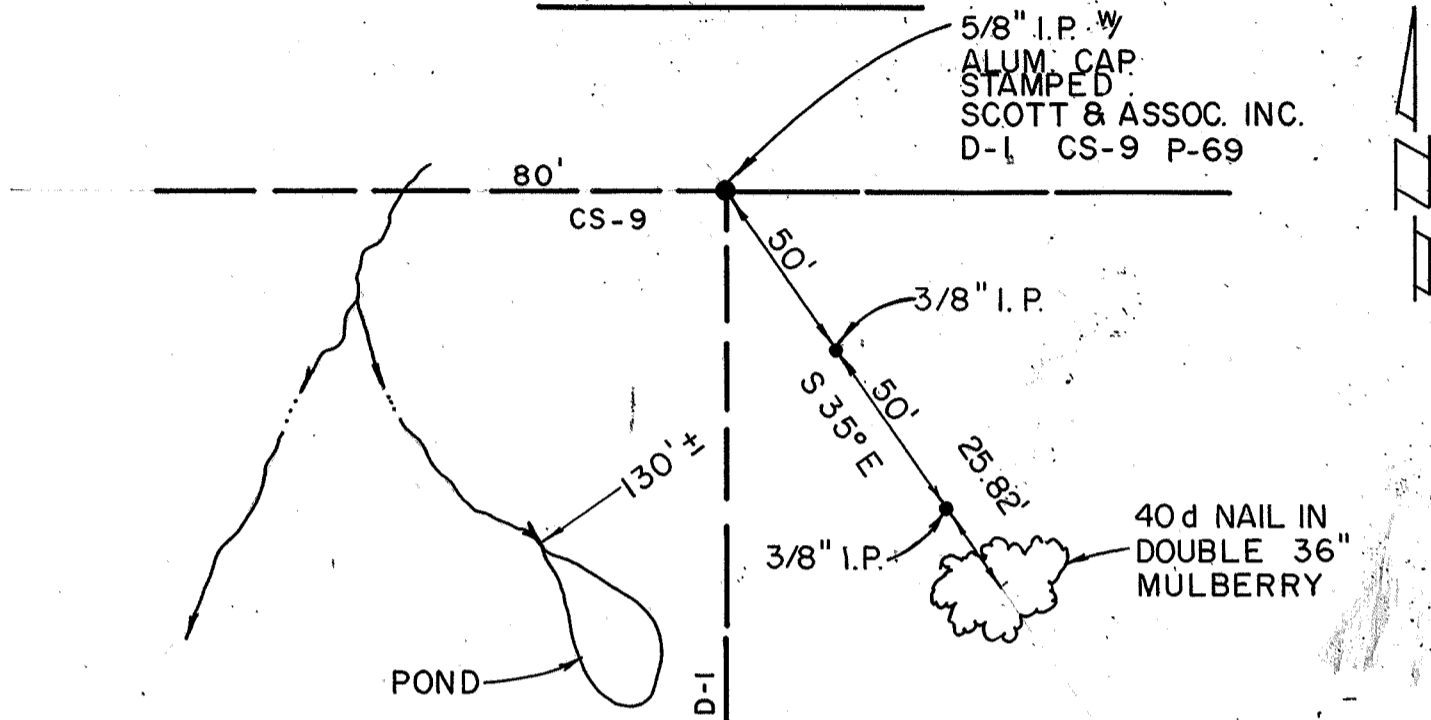
PARTIAL BOUNDARY SURVEYS  
 FT. GIBSON LAKE OKLA.  
 SEC. 2 T-19-N R-18-E

COUNTY MAYES

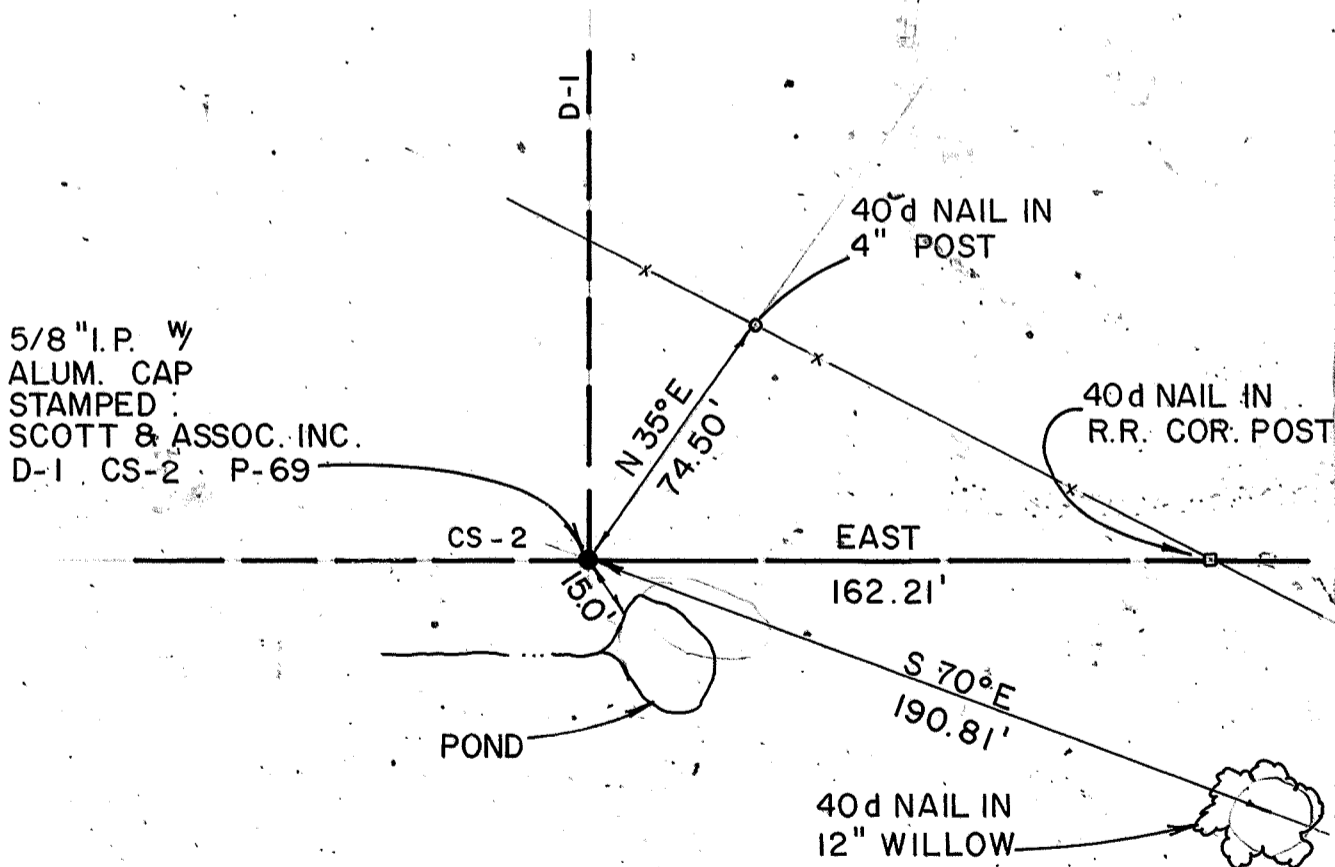
D.O. NO. 0002

Performed Under Contract No. DACA 56-88-D-0047

PARCEL # 69



D-1, CS9



D-2, CS2

Field Book No. 5-1833 Date 12 / 88

CERTIFICATE OF SURVEY

I Hereby Certify That The Above Plat  
 is a True and Correct Representation  
 of the Survey.

SCOTT & ASSOCIATES INC.  
 LAND SURVEYORS

— LEGEND —

- △ C. of E BRASS CAP
- ORIGINAL CORNER
- IRON PIN w/CAP

U.S. ARMY CORPS OF ENGINEERS  
 TULSA DISTRICT

*Basil E. Scott Jr.*  
 BASIL E. SCOTT JR. L.S. 545