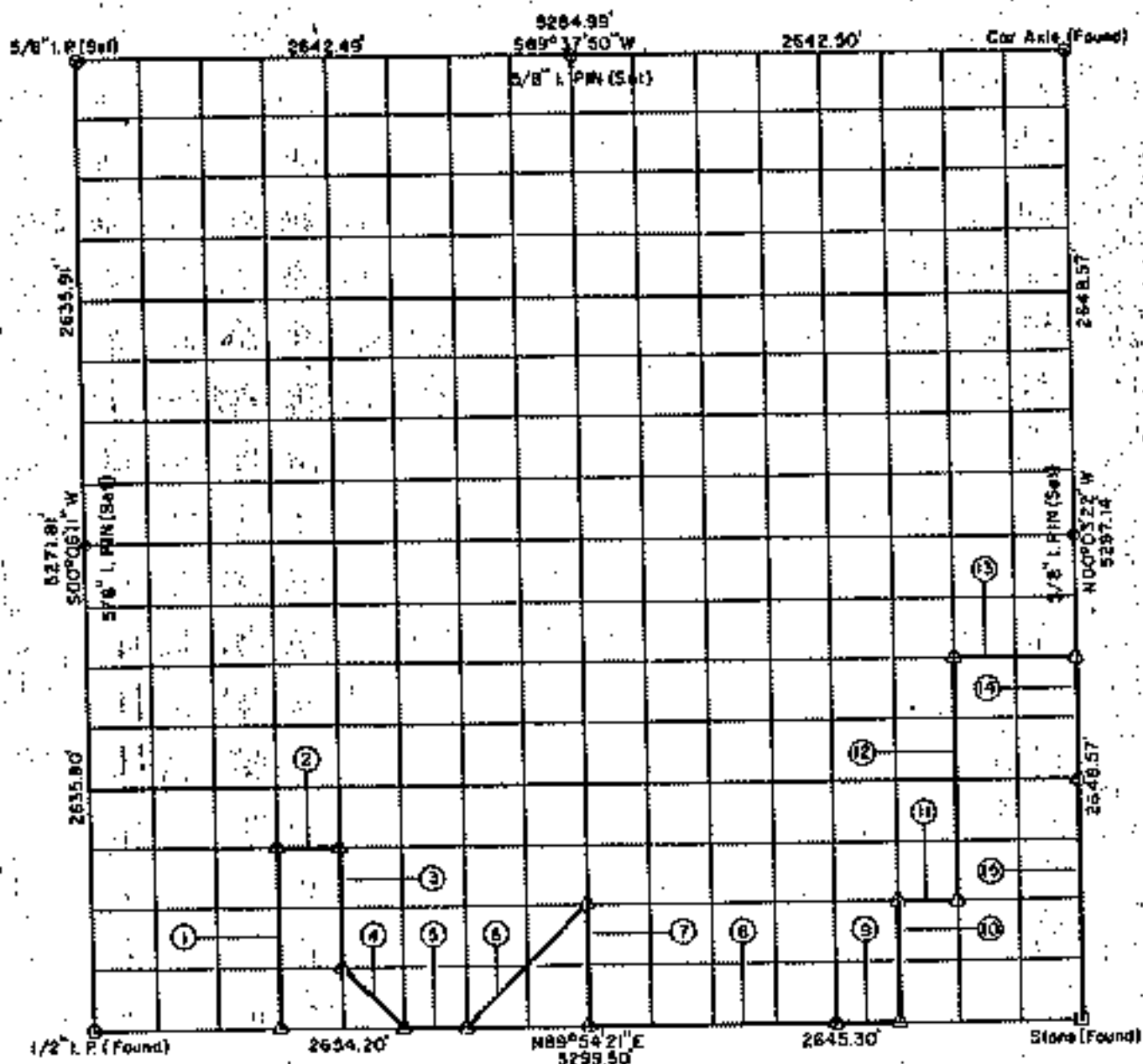


PARTIAL BOUNDARY SURVEYS

FORT GIBSON LAKE
GRAND RIVER, OKLAHOMA

Performed Under Contract Number DACW56-71-C-010B

SEC 34 T-19-N R-18-E COUNTY MAYES



Course No.	Distance	Bearing	Course No.	Distance	Bearing
1	989.45'	N00°03'19\"E	14	662.15'	S00°03'22\"E
2	331.52'	N89°51'15\"E	15	1324.29'	S00°03'22\"E
3	659.77'	S00°02'21\"W			
4	467.72'	S45°08'13\"E			
5	331.78'	S89°54'21\"E			
6	836.93'	N45°04'28\"E			
7	660.56'	S00°01'29\"E			
8	1322.65'	N89°54'21\"E			
9	330.86'	N89°54'21\"E			
10	661.55'	N00°02'39\"W			
11	330.80'	N89°52'17\"E			
12	1323.50'	N00°02'53\"W			
13	661.00'	N89°48'00\"E			

CERTIFICATE OF SURVEY Field Book No. 5-1817 Date: MARCH, 1971

I HEREBY CERTIFY THAT THE ABOVE PLAT IS A TRUE AND CORRECT REPRESENTATION OF THE SURVEY MADE IN SECTION 34, T-19, N, R-18, E, MAYES COUNTY, OKLAHOMA.

E. H. SCHMIDT CORPORATION
Under the Supervision of
U.S. ARMY ENGINEER DISTRICT, TULSA
CORPS OF ENGINEERS
SHEET 1 of 1

LEGEND
 B MONUMENT
 C ORIGINAL CORNER
 O IRON PIN
 E COMPUTED DISTANCE

