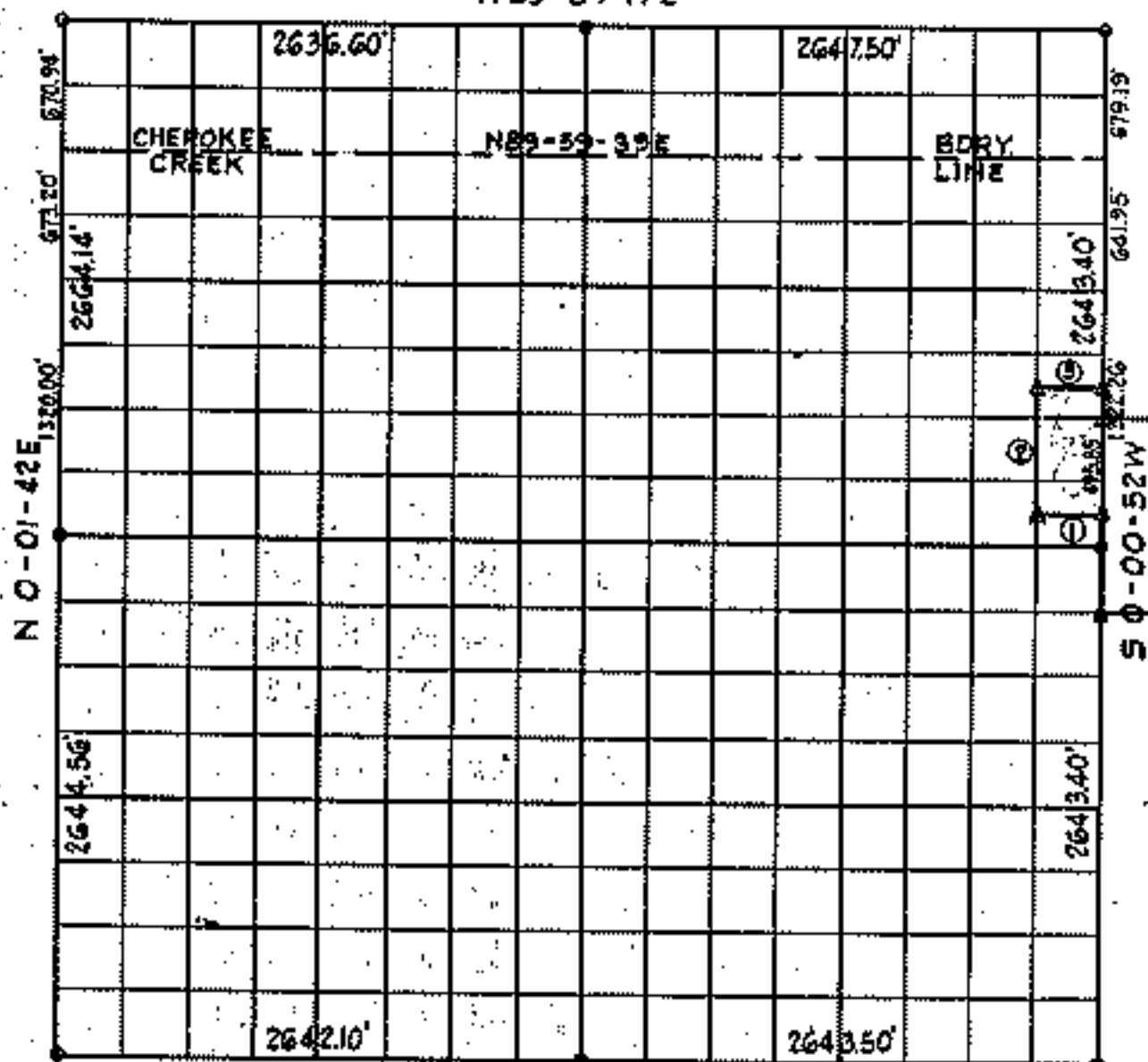


SEC. 3 T. 19N. R. 18E COUNTY MAYES

N 89-54-17E



589-40-27W

Course Number	Distance	Bearing	Course Number	Distance	Bearing
1	130.71	S 89° 40' 37" W			
2	661.06	E 0° 00' 32" E			
3	130.77	N 89° 39' 53" E			

Book No. 5-3834 Date: October, 1972

I, Charles J. Finkles, hereby certify that the above plat is a true and correct representation of the survey made in Section 3, T19N, R18E.

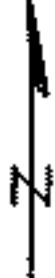
LEGEND

- ▲ Monument
- Original Corner
- Iron Pin

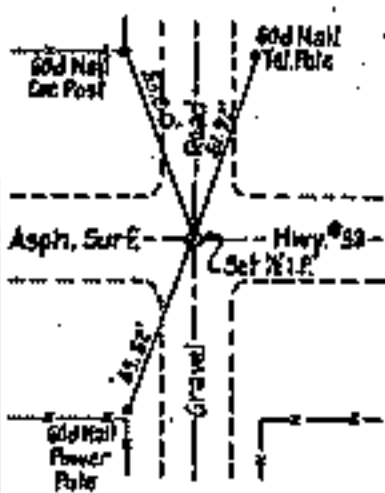
Charles J. Finkles
 Registered Land Surveyor No. 35



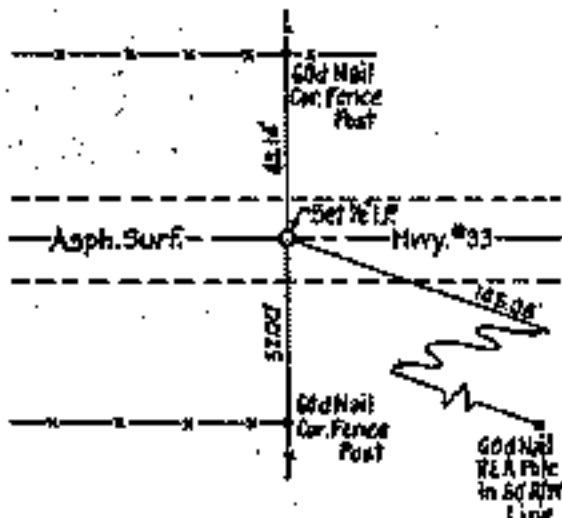
FORT GIBSON LAKE
GRAND RIVER, OKLAHOMA
SECTION AND QUARTER SECTION CORNER
REFERENCES FOR
SEC. 3, T. 19N, R. 18E COUNTY MAYES



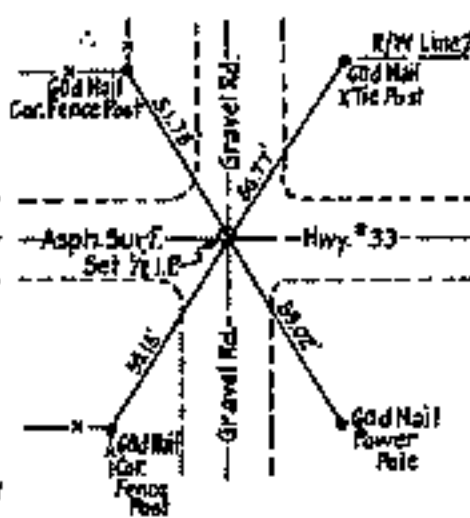
N.W. CORNER



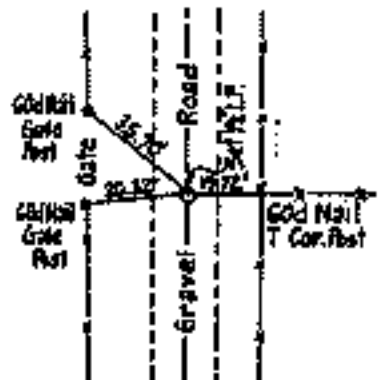
NORTH 1/4 CORNER



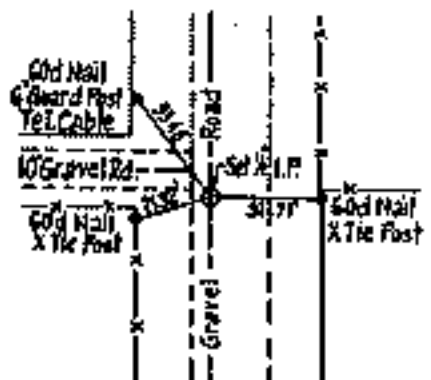
N.E. CORNER



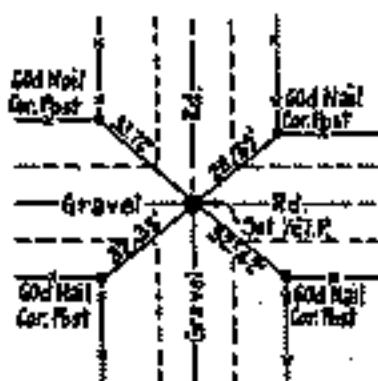
WEST 1/4 CORNER



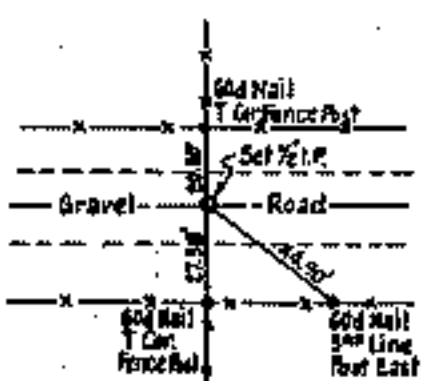
EAST 1/4 CORNER



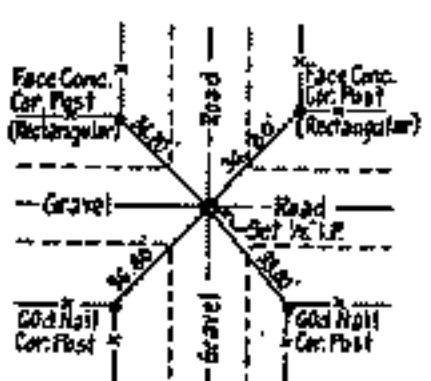
S.W. CORNER



SOUTH 1/4 CORNER



S.E. CORNER



SAN JUAN ENGINEERING Co.

Scale: 1 Inch = 50'
 Date: Oct. 1971
 Field Book No. 5-1834

LEGEND

- ▲ Monument
- Original Corner
- Iron Pin