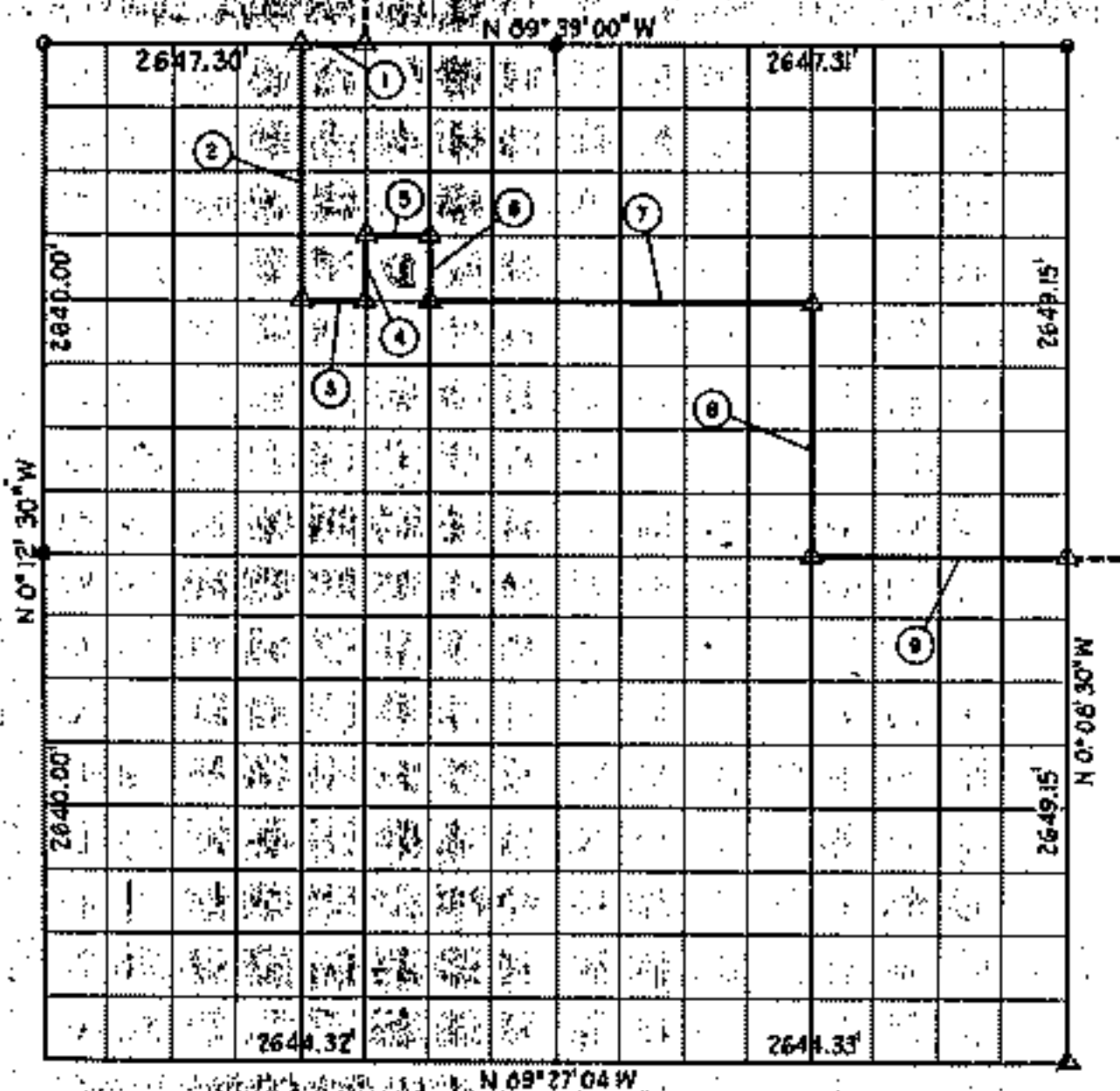


SEC. 10 - T19 N - R19 E. MAYES COUNTY



Course No.	Distance	Bearing	Course No.	Distance	Bearing
1	1322.91	N 89° 33' 02\" W			
2	1323.43	N 0° 09' 30\" W			
3	1984.65	N 89° 36' 01\" W			
4	330.98	N 0° 11' 00\" W			
5	330.84	N 89° 36' 46\" W			
6	330.36	S 0° 11' 15\" E			
7	130.82	N 89° 36' 01\" W			
8	1321.14	N 0° 11' 30\" W			
9	330.91	N 89° 39' 00\" E			

Book No. 5-1684 Date: June, 1965

I, Charles J. Finkles, a Registered Professional Engineer, do hereby certify that the above is a true and accurate survey of Sec. 10-T19--R19E as made under my supervision.

Reg. Prof. Eng. No. 1063