

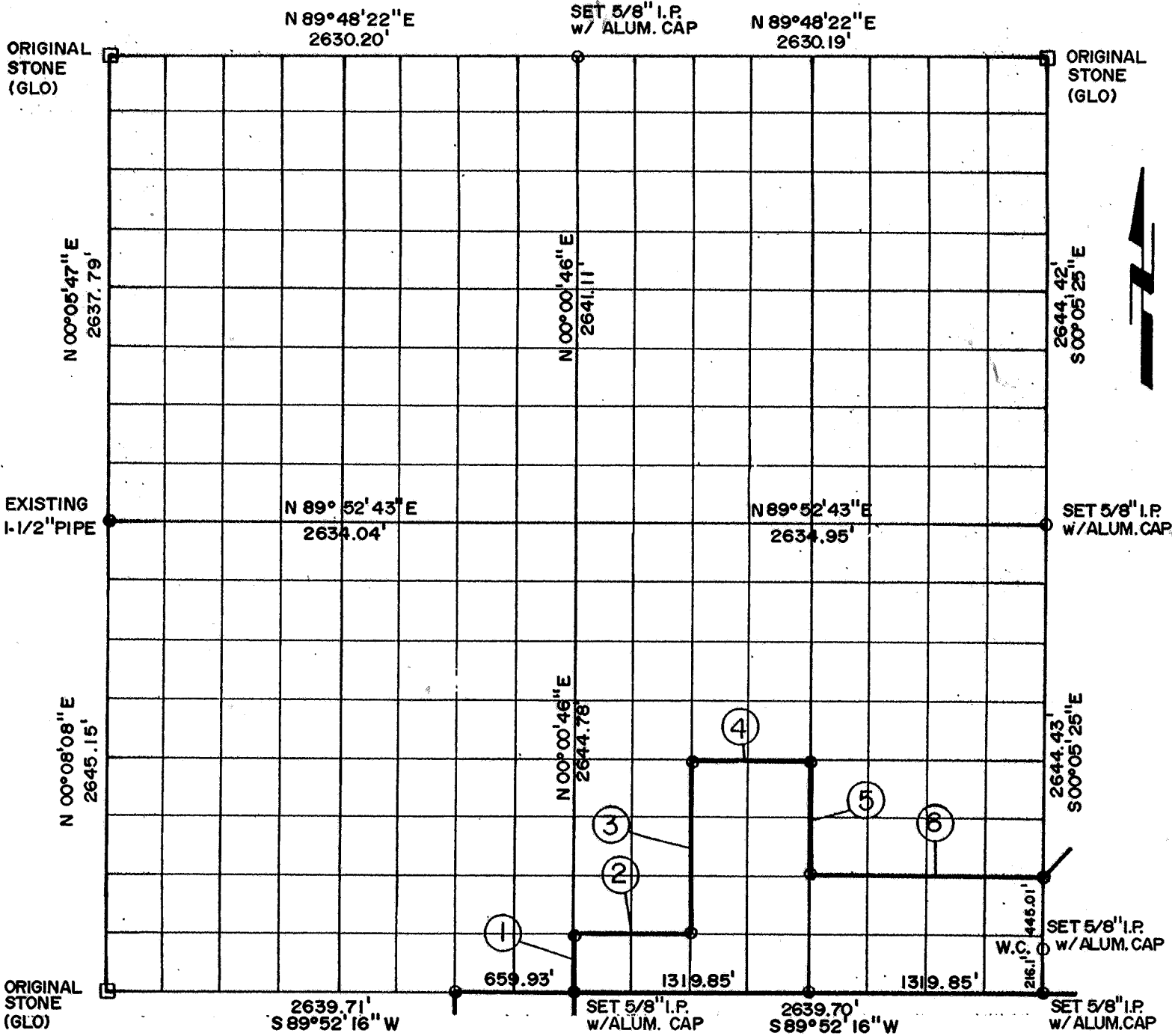




PARTIAL BOUNDARY SURVEYS  
 FT. GIBSON DAM & RESERVOIR  
 LAKE FT. GIBSON, OKLA.

Performed Under Contract Number DACA56-88-D-0050

SEC. 13 , T 19 N , R 19 E , COUNTY MAYES



Crs.	Bearing	Distance	Crs.	Bearing	Distance
1	N 00° 00' 46" E	330.60			
2	N 89° 52' 19" E	659.78			
3	N 00° 00' 47" W	991.78			
4	N 89° 52' 29" E	659.33			
5	S 00° 02' 19" E	661.15			
6	N 89° 52' 23" E	1319.26			

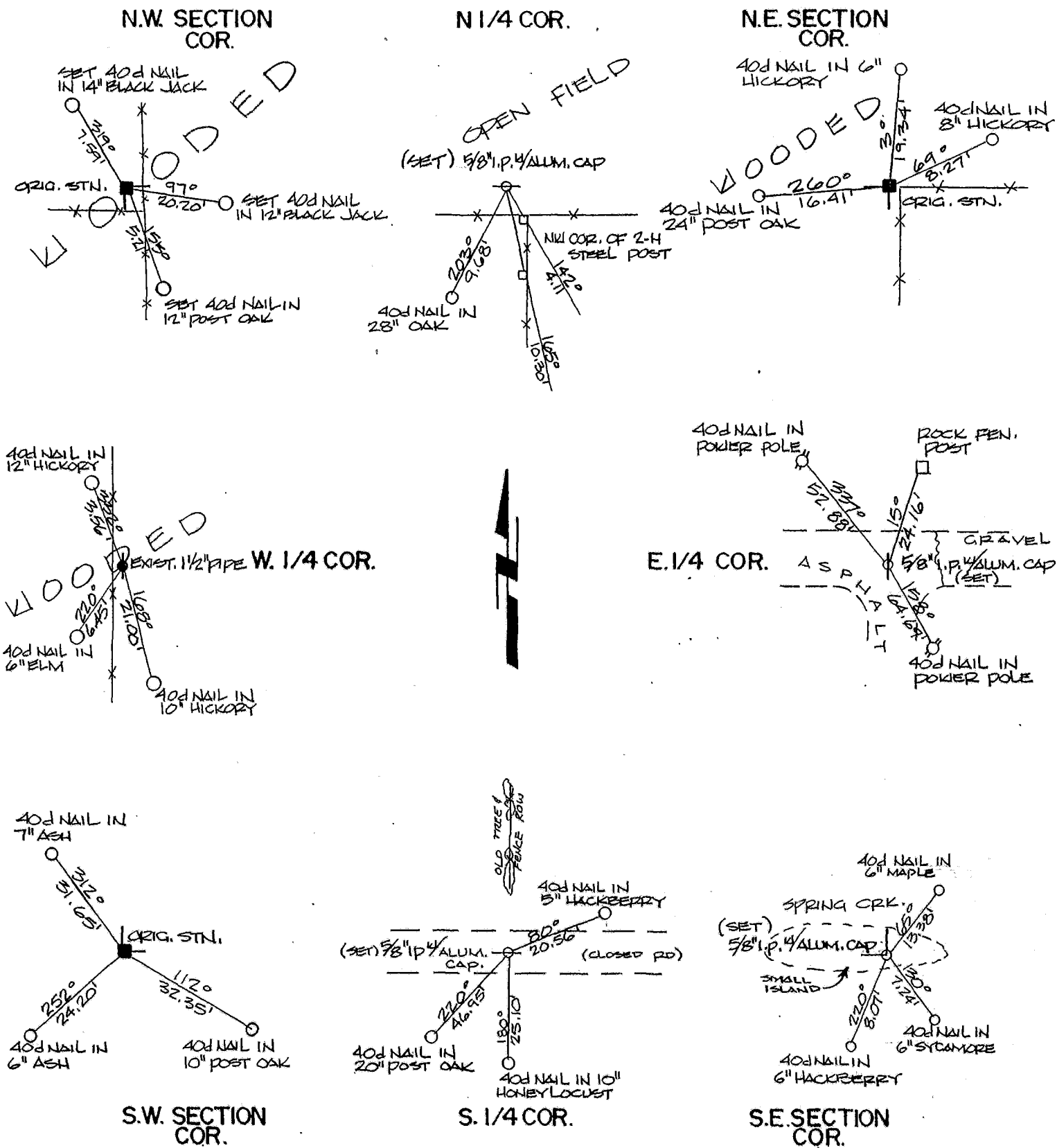
Field Book No. 5-2034 - 5-2036 Date JULY, 1989  
**CERTIFICATE OF SURVEY**  
 I Hereby Certify That The **ENTZ ENGINEERING & ASSOCIATES INC. AND HUFFMAN SURVEYING CO., INC.**  
 Above Plat is a True and Correct Representation of the **A Joint Venture**  
 Boundary Survey Made in Sec. 13 , T. 19 N , R. 19 E , **U.S. ARMY ENGINEER DISTRICT, TULSA CORPS OF ENGINEERS**  
*Ron Huffman*  
 Ron Huffman L.S. 1020

- △ MONUMENT
- ORIGINAL CORNER
- IRON PIN W/ CAP

PARTIAL BOUNDARY SURVEYS  
 FT. GIBSON DAM & RESERVOIR  
 LAKE FT. GIBSON, OKLA.

Performed Under Contract Number DACA56-88-D-0050

SEC. 13 , T 19 N , R 19 E , COUNTY MAYES



Field Book No. 5-2034 - 5-2036 Date JULY, 1989  
 ENTZ ENGINEERING & ASSOCIATES INC. AND  
 HUFFMAN SURVEYING CO., INC.

A Joint Venture

for

U.S. ARMY ENGINEER DISTRICT, TULSA  
 CORPS OF ENGINEERS

- ▲ MONUMENT
- ORIGINAL CORNER
- IRON PIN

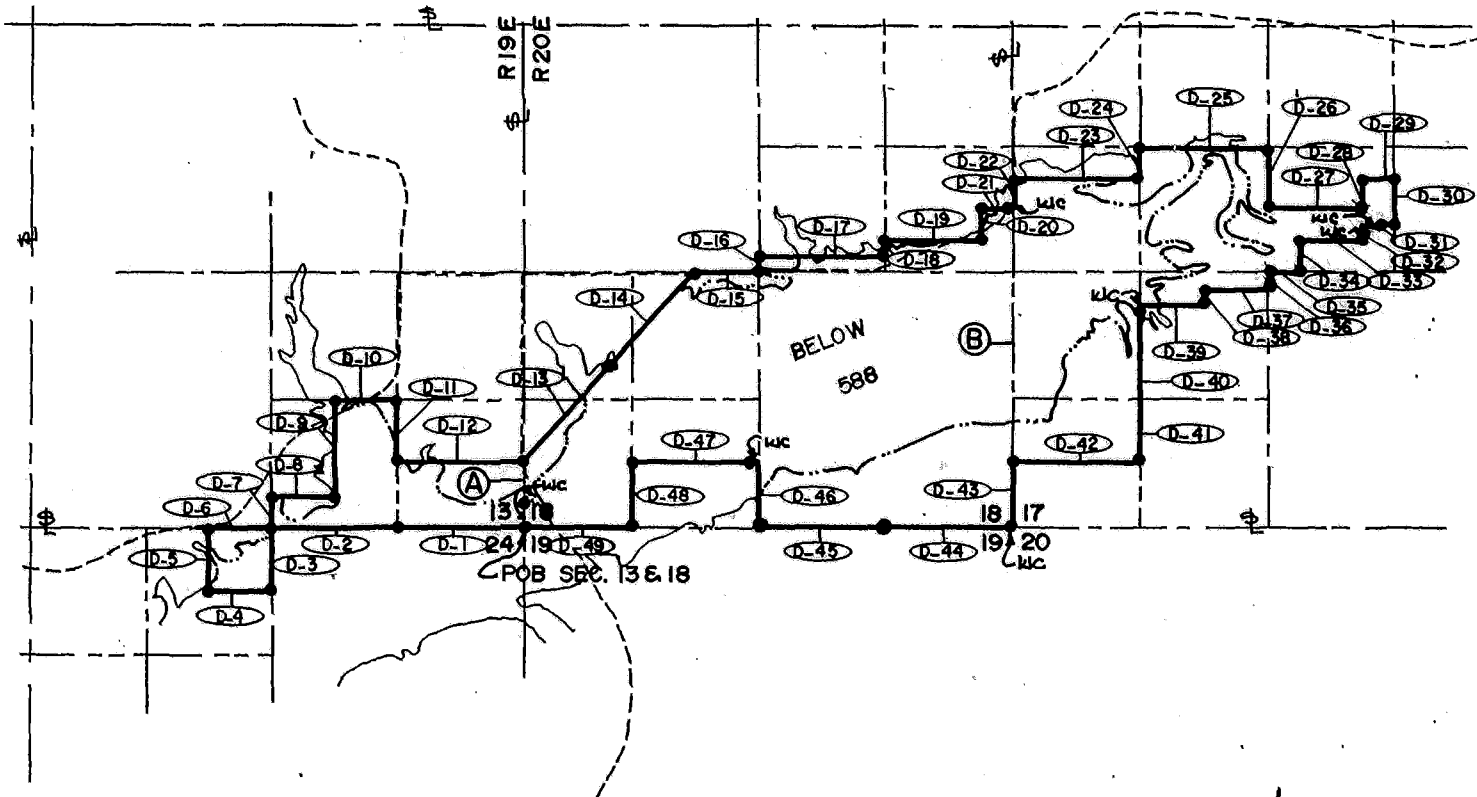
*Ron Huffman*

Ron Huffman, LS 1020

**DISPOSAL TRACT SURVEY PLAT  
FT. GIBSON DAM & RESERVOIR  
LAKE FT. GIBSON, OKLA.**

SEC. 13824 / 17&18, T 19 N, R 20 E, COUNTY MAYES

PARCEL NO. 31 Performed Under Contract No. DACA56-88-D-0050



○ D-12 DISPOSAL BOUNDARY COURSE

FLOWAGE EASEMENT = 313.866 AC. (BELOW 588 ELEV.)

TOTAL AREA = 473.234 AC.

● 5/8" I.P. w/ ALUM. CAP ATOP

SCALE 1" = 2000'

Course No.	Distance	Bearing	Course No.	Distance	Bearing
D-1	1319.85	S 89°52'16" W	D-14	1333.73	N 42°10'25" E
D-2	1319.85	S 89°52'16" W	D-15	660.78	S 89°47'40" E
D-3	659.88	S 00°04'43" E	D-16	165.28	N 00°03'40" W
D-4	660.05	S 89°53'52" W	D-17	1321.72	S 89°47'40" E
D-5	659.57	N 00°04'06" W	D-18	165.28	N 00°00'24" W
D-6	659.93	N 89°52'16" E	D-19	991.41	S 89°47'40" E
D-7	330.60	N 00°00'46" E	D-20	330.56	N 00°02'02" E
D-8	659.78	N 89°52'19" E	D-21	330.55	S 89°47'41" E
D-9	991.76	N 00°00'47" W	D-22	330.56	N 00°02'51" E
D-10	659.33	N 89°52'29" E	D-23	1325.43	S 89°49'31" E
D-11	661.15	S 00°02'19" E	D-24	330.58	N 00°01'05" E
D-12	1319.26	N 89°52'23" E	D-25	1325.26	S 89°49'31" E
D-13	1333.73	N 42°10'25" E	D-26	661.22	S 00°00'40" E

Field Book No. 5-2035 <sup>5-2034</sup> 5-2036 Date JULY 1989

**CERTIFICATE OF SURVEY** ENTZ ENGINEERING & ASSOCIATES INC. AND  
HUFFMAN SURVEYING CO., INC.

I Herby Certify That The  
Above Plat is a True and Correct  
Representation of the Survey  
Made in Sec. 13, T 19 N, R 20 E.

A Joint Venture  
for

U.S. ARMY ENGINEER DISTRICT, TULSA  
CORPS OF ENGINEERS

— LEGEND —

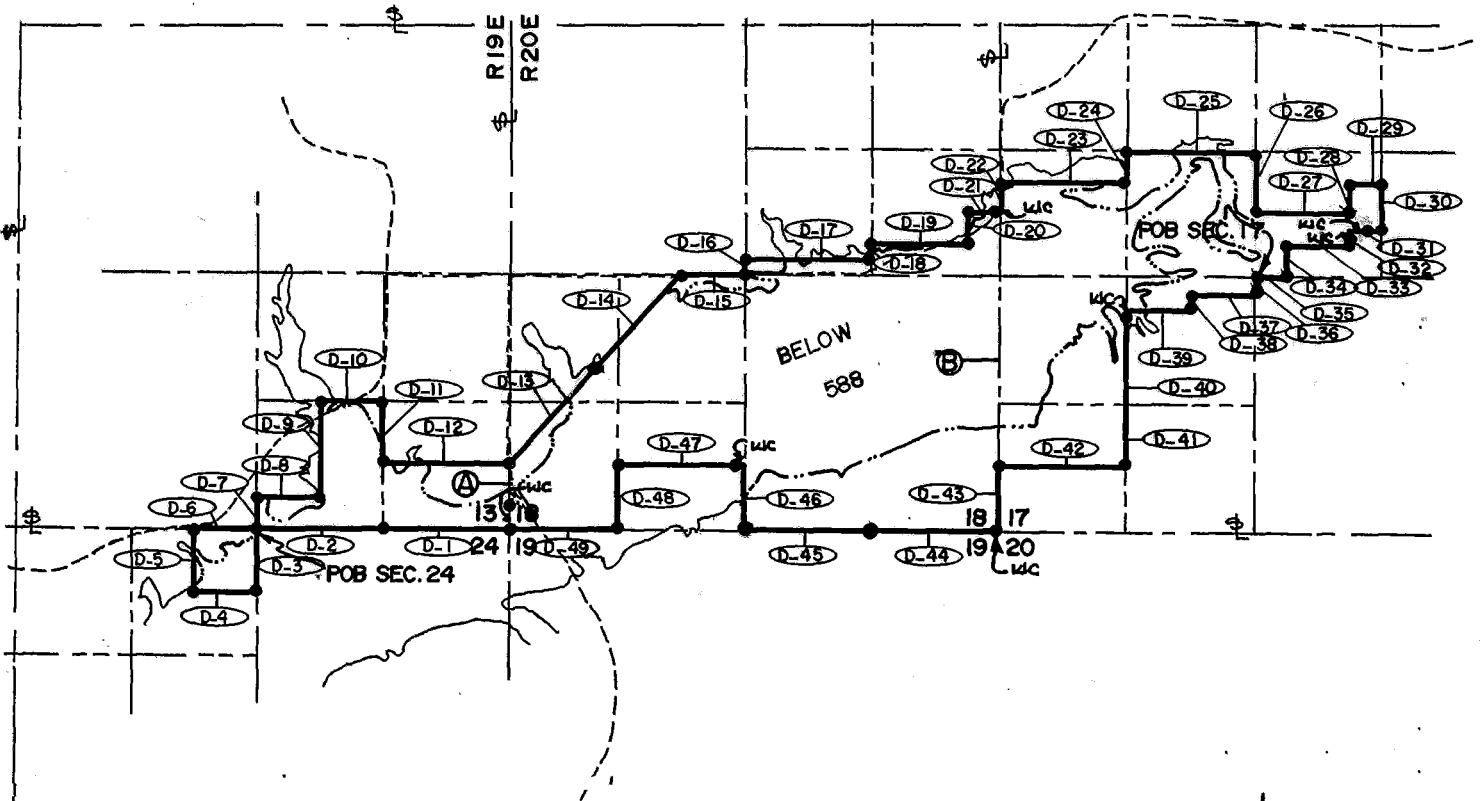
△ MONUMENT  
□ ORIGINAL CORNER  
● IRON PIN W/ CAP

*Ron Huffman*  
Ron Huffman L.S. 1020

**DISPOSAL TRACT SURVEY PLAT  
FT. GIBSON DAM & RESERVOIR  
LAKE FT. GIBSON, OKLA.**

SEC. <sup>13824</sup><sub>17818</sub>, T <sup>19</sup><sub>19</sub> N, R <sup>20</sup><sub>20</sub> E, COUNTY MAYES

PARCEL NO. 31 Performed Under Contract No. DACA56-88-D-0050



○ D-12 DISPOSAL BOUNDARY COURSE

FLOWAGE EASEMENT = 313.866 AC. (BELOW 588 ELEV.)

TOTAL AREA = 473.234 AC.

● 5/8" I.P. w/ ALUM. CAP ATOP

SCALE 1" = 2000'

Course No.	Distance	Bearing	Course No.	Distance	Bearing
D-27	994.20	S89°49'27"E	D-40	661.16	S00°01'05"W
D-28	330.63	N00°02'00"W	D-41	991.75	S00°01'05"W
D-29	331.36	S89°49'31"E	D-42	1326.96	N89°48'55"W
D-30	495.95	S00°02'26"E	D-43	661.11	S00°02'51"W
D-31	331.42	N89°49'25"W	D-44	1319.05	N89°47'38"W
D-32	165.31	S00°02'00"E	D-45	1319.05	N89°47'38"W
D-33	662.89	N89°49'23"W	D-46	661.11	N00°03'40"W
D-34	330.61	S00°01'07"E	D-47	1319.68	N89°47'39"W
D-35	331.48	N89°49'19"W	D-48	661.11	S00°06'55"E
D-36	165.30	S00°00'40"E	D-49	1134.39	N89°47'38"W
D-37	663.01	N89°49'17"W	A	661.11	S00°05'25"E
D-38	165.30	S00°00'12"W	B	2644.45	S00°02'51"W
D-39	663.05	N89°49'15"W			

Field Book No. 5-2035 5-2036 Date JULY 1989

**CERTIFICATE OF SURVEY** ENTZ ENGINEERING & ASSOCIATES INC. AND  
I Hereby Certify That The HUFFMAN SURVEYING CO., INC.  
Above Plat is a True and Correct  
Representation of the Survey  
Made in Sec. 31, T 19 N, R 20 E.  
A Joint Venture  
for

U.S. ARMY ENGINEER DISTRICT, TULSA  
CORPS OF ENGINEERS

— LEGEND —

△ MONUMENT  
□ ORIGINAL CORNER  
● IRON PIN w/ CAP

*Ron Huffman*  
Ron Huffman U.S. 1020