

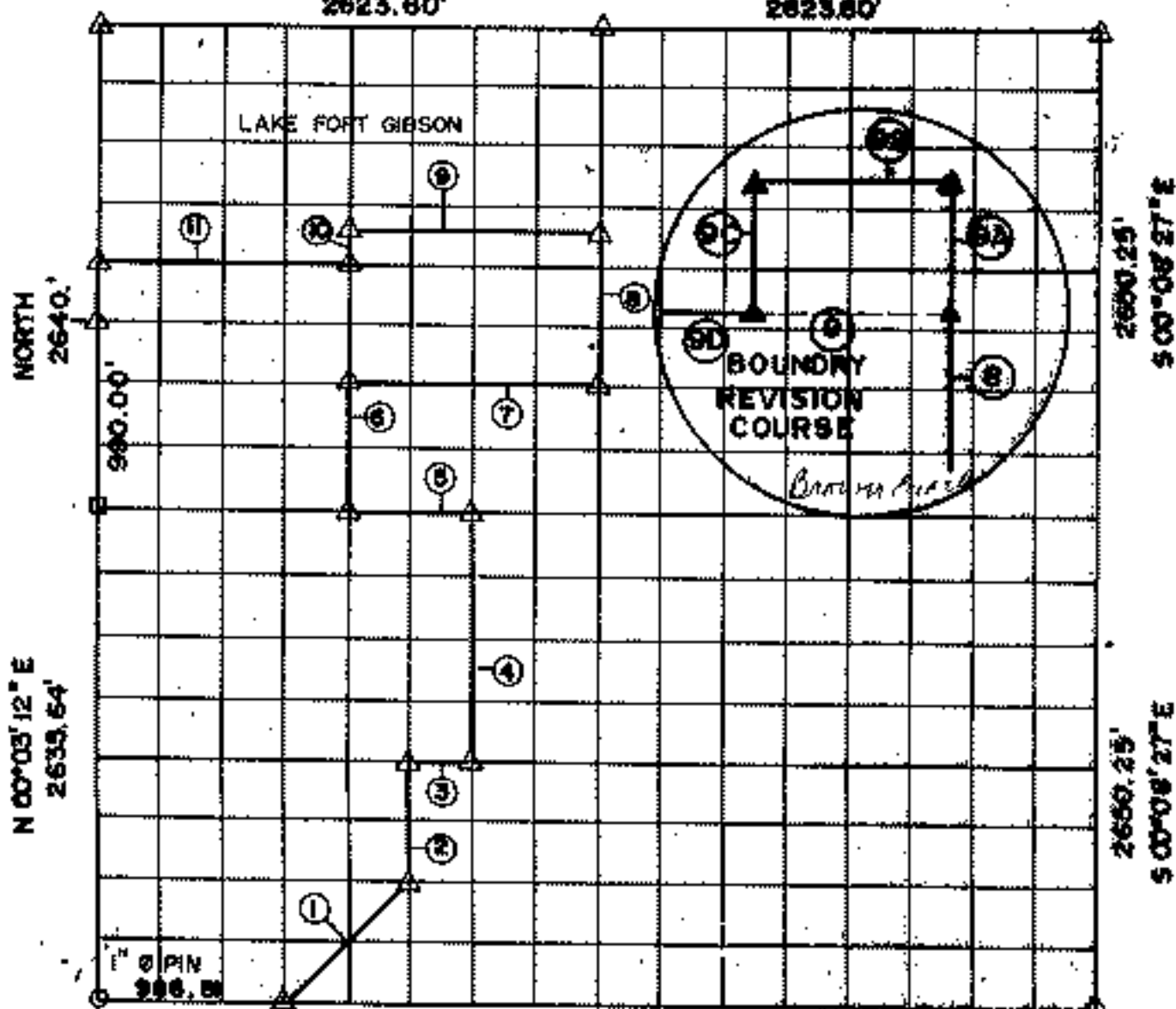
RECORD BOUNDARY PLAT

LAKE FORT GIBSON, OKLAHOMA

SEC 15 T 19N R 19E COUNTY MAYES

S89°28'10"E
2623.60'

S89°28'10"E
2623.60'



Course No.	Distance	Bearing	Course No.	Distance	Bearing
1	825.08	N 45° 17' 56" E			
2	660.05	N 00° 01' 19" W			
3	326.70	S 89° 16' 08" E			
4	1319.96	N 00° 02' 30" E			
5	657.08	N 89° 20' 40" W			
6	661.46	N 00° 00' 10" E			
7	1313.62	S 89° 20' 20" E			
8	627.08	N 00° 01' 20" W			
9	1313.25	N 89° 22' 20" W			
10	145.36	S 00° 00' 20" E			
11	1313.65	N 89° 21' 00" W			
			9A	40.00'	N 00° 01' 20" W
			9B	100.00'	N 89° 22' 20" W
			9C	40.00'	S 00° 01' 20" E
			9D	1213.25'	N 89° 22' 20" W

NOTE: MONUMENTS IN FIELD ARE DESCRIBED BY SECTIONAL SUBDIVISION NOT COURSES AS DEPICTED BY THIS PLAT. ALL BEARINGS ARE UNIQUE & ASSUMED FOR THIS PLAT.

BOUNDARY REVISION 7/5/84

SEPT, 1984

Field Book No. 5-1381

Date 1952

SURVEY PERFORMED BY THE
CORPS OF ENGINEERS, TULSA DISTRICT
PLATS PREPARED BY
ENTZ ENGINEERING & ASSOCIATES INC. AND
HUFFMAN SURVEYING CO., INC.

LEGEND

- A MONUMENT
- C ORIGINAL CORNER
- O IRON PIN

SHEET of

RECORD BOUNDARY PLAT

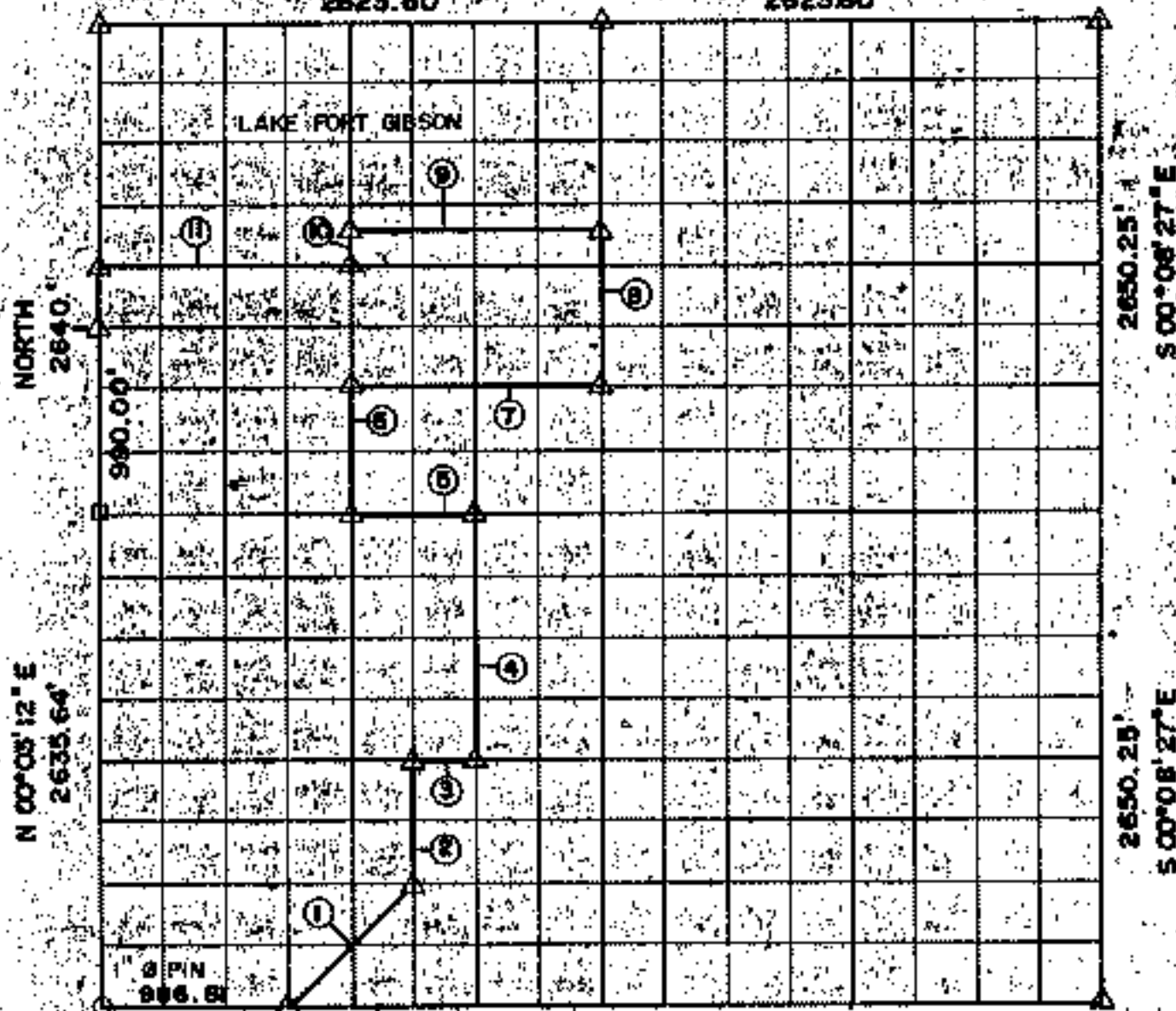
LAKE FORT GIBSON, OKLAHOMA

SEC. 15 T. 19 N. R. 19 E.

COUNTY MAYES

589°28'10"E
2623.60'

589°28'10"E
2623.60'



2634.49'
589°11'24\"E

2631.49'
589°11'24\"E

Course No.	Distance	Bearing	Course No.	Distance	Bearing
1	925.08	N 45° 17' 56\" E			
2	660.06	N 00° 01' 19\" W			
3	526.70	S 89° 16' 08\" E			
4	1319.96	N 00° 02' 30\" E			
5	657.08	N 89° 20' 40\" W			
6	661.46	N 00° 00' 10\" E			
7	1313.62	S 89° 20' 20\" E			
8	627.08	N 00° 01' 20\" W			
9	1313.66	N 89° 22' 20\" W			
10	165.38	S 00° 00' 20\" E			
11	1313.65	N 69° 21' 00\" W			

NOTE: MONUMENTS IN FIELD ARE DESCRIBED BY SECTIONAL SUBDIVISION NOT COURSES AS DEPICTED BY THIS PLAT. ALL BEARINGS ARE UNIQUE & ASSUMED FOR THIS PLAT.

SEPT. 1984 Field Book No. 5-1381 Date 1952

SURVEY PERFORMED BY THE
CORPS OF ENGINEERS, TULSA DISTRICT
PLATS PREPARED BY
ENTZ ENGINEERING & ASSOCIATES INC. AND
HUFFMAN SURVEYING CO., INC.

LEGEND
▲ MONUMENT
□ ORIGINAL CORNER
○ IRON PIN

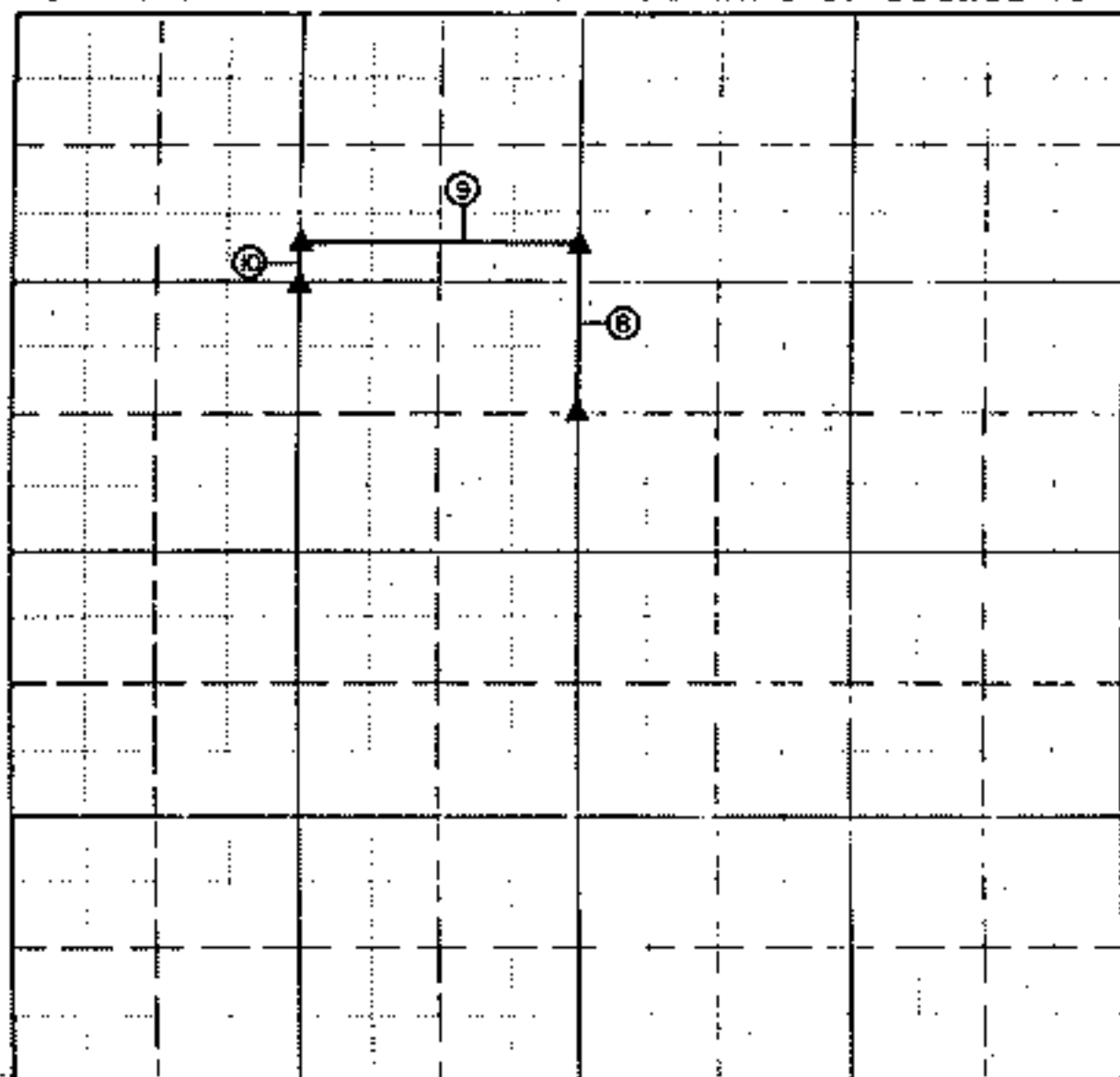
RETRACEMENT SURVEY PLAT

LAKE FORT GIBSON, OKLAHOMA

PERFORMED UNDER CONTRACT NUMBER DACAG6-85-D-0078

SEC. 15, T19 NORTH, R 19 EAST COUNTY MAYES

BASIS OF BEARINGS: RECORD BEARING OF COURSE 10



Course No	Distance	Bearing	Course No	Distance	Bearing
10	165.08	N 00°00'20"W			
9	1313.17	S 89°22'54"E			
8	828.78	S 00°02'55"E			

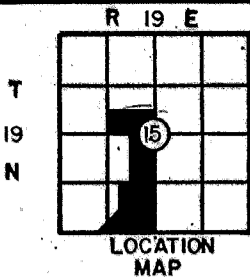
Field Book No 5-1391 Date AUGUST, 1986

CRAFTON, TULL, SPANN & YOE, INC.

under the supervision of
 U.S. ARMY ENGINEER DISTRICT
 TULSA CORPS OF ENGINEERS

LEGEND:

▲ SET MONUMENT
 ● FOUND MONUMENT

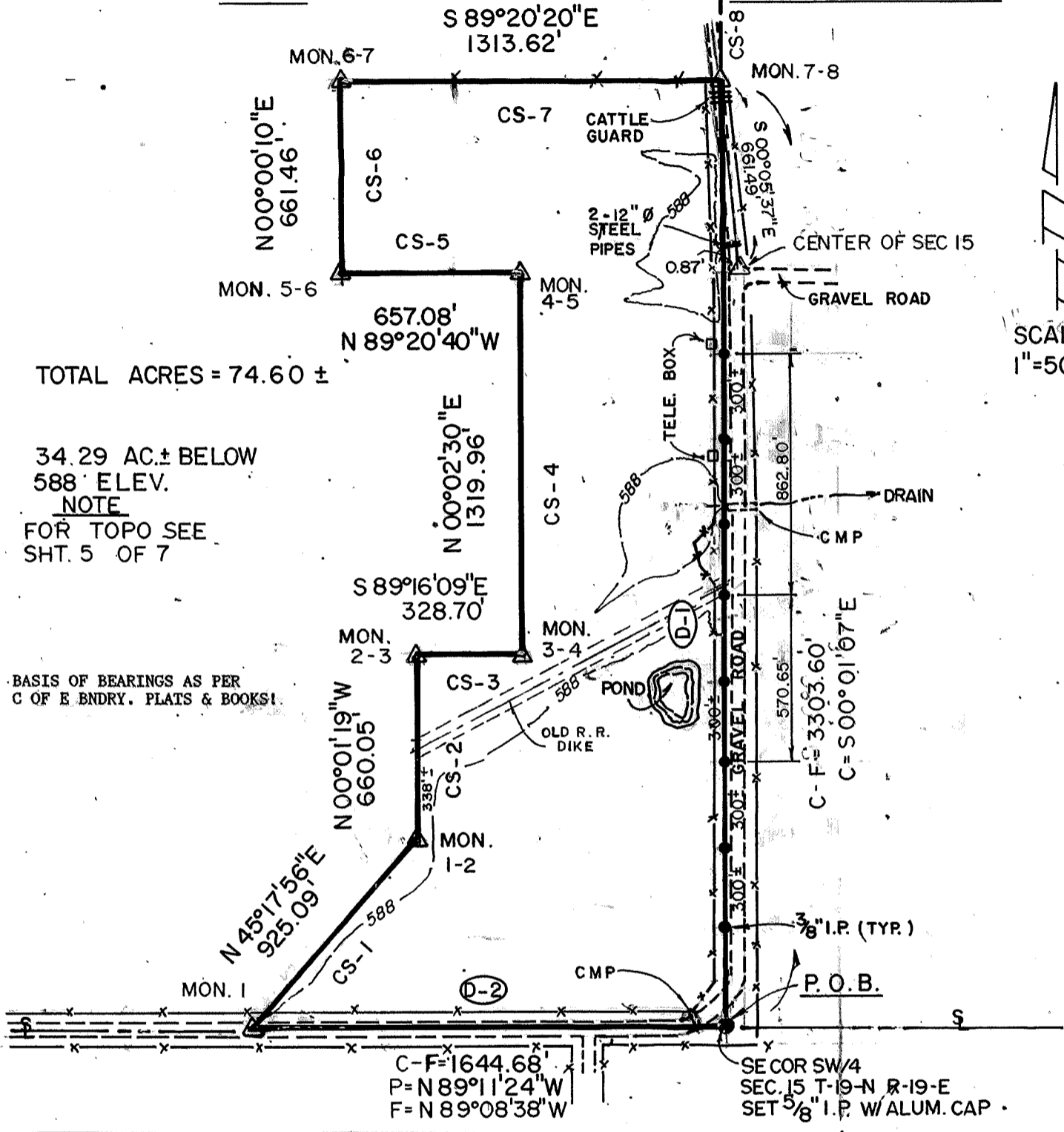


PARTIAL BOUNDARY SURVEYS
 FT. GIBSON LAKE OKLA.
 SEC. 15 T-19 -N R-19 -E

PARCEL 76
 D.O. NO. 0002

COUNTY MAYES

Performed Under Contract No. DACA 56-88-D-0047



SCALE
 1"=500'

TOTAL ACRES = 74.60 ±

34.29 AC. ± BELOW
 588' ELEV.
 NOTE
 FOR TOPO SEE
 SHT. 5 OF 7

BASIS OF BEARINGS AS PER
 C OF E BNDRY. PLATS & BOOKS!

PARCEL #76 DESCRIPTION

Parcel #76 containing 74.80 Acres, more or less, located in the SE 1/4 NW 1/4, and SW 1/4, of Section 15, Township 19 North, Range 19 East, Indian Meridian, Mayes County, Oklahoma, described as: beginning at the southeast corner of SW 1/4 of Section 15, being a 5/8" iron pin with aluminum cap; thence N89°11'24"W, 1644.68 feet (D-2) to the southeast corner of SW 1/4 SE 1/4 SW 1/4 SW 1/4, being a C of E boundary corner (mon 1); thence N45°17'56"E, 925.09 feet (CS-1) to the southeast corner of SW 1/4 NW 1/4 SE 1/4 SW 1/4 (mon 1/2), being a C of E boundary corner; thence N00°01'19"W, 660.05 feet (CS-2) to the northwest corner NE 1/4 NW 1/4 SE 1/4 SW 1/4 (mon 2/3) being a C of E boundary corner; thence S89°16'09"E, 328.70 feet (CS-3) to the southeast corner SW 1/4 NE 1/4 SW 1/4 (mon 3/4), being a C of E boundary corner; thence N00°02'30"E, 1319.96 feet (CS-4) to the northeast corner NW 1/4 NE 1/4 SW 1/4 (mon 4/5), being a C of E boundary corner; thence N89°20'40"W, 657.08 feet (CS-5) to the southwest corner of the SE 1/4 NW 1/4, (mon 5/6); being a C of E boundary corner; thence N00°00'10"E, 661.46 feet (CS-6) to the northwest corner SW 1/4 SE 1/4 NW 1/4 (mon 6/7), being a C of E boundary corner; thence S89°20'20"E, 1313.62 feet (CS-7) to the southeast corner NE 1/4 SE 1/4 NW 1/4 (mon 7/8), being a C of E boundary corner; thence S00°01'07"E, 3303.60 feet (D-1) to the point of beginning.

Field Book No. 5-2029 Date 12/88

CERTIFICATE AND SURVEY
 I Hereby Certify That the Above Plat
 is a True and Correct Representation
 of the Survey
 BASIL E. SCOTT JR.
 L.S. 545

SCOTT & ASSOCIATES, INC.
 LAND SURVEYORS

U.S. ARMY CORPS OF ENGINEERS
 TULSA DISTRICT

- LEGEND —
- △ C of E BRASS CAP
 - ORIGINAL CORNER
 - IRON PIN W/ CAP

REFERENCES

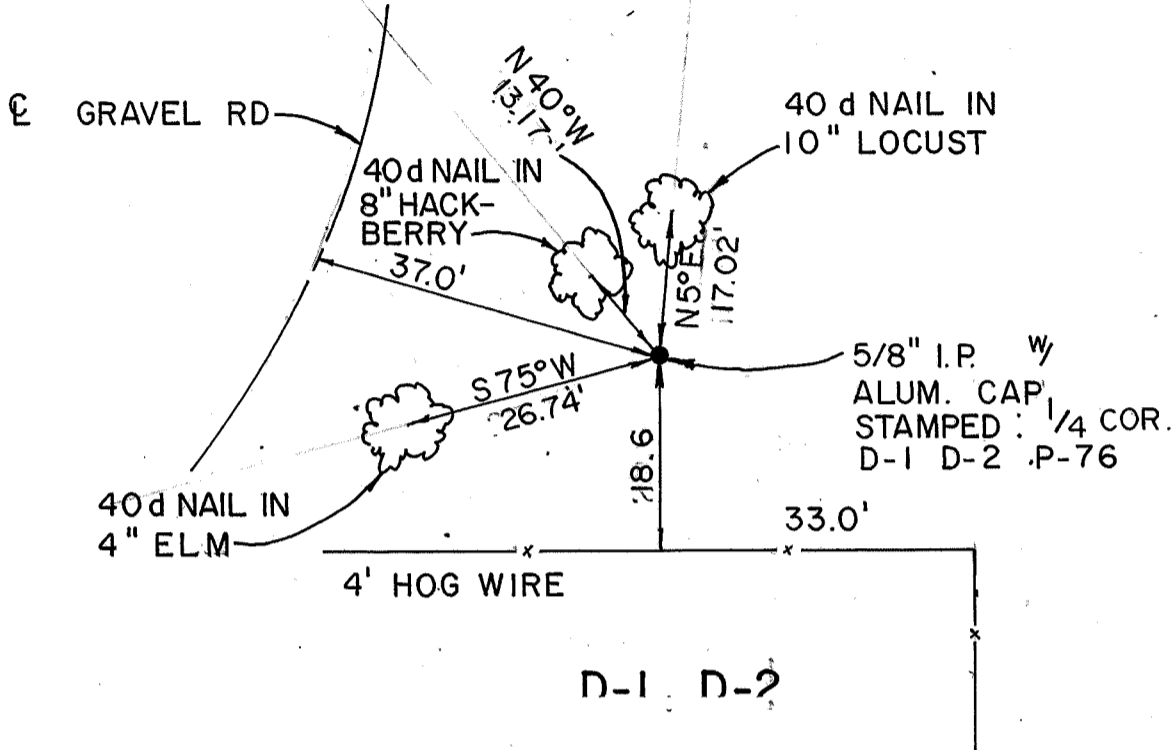
PARTIAL BOUNDARY SURVEYS
FT. GIBSON LAKE OKLA.
SEC. 15 T-19-N R-19-E

COUNTY MAYES

D.O. NO. 0002

Performed Under Contract No. DACA 56-88-D-0047

PARCEL 76



Field Book No. 5-2029 Date 12 / 88

CERTIFICATE OF SURVEY

SCOTT & ASSOCIATES INC.
LAND SURVEYORS

— LEGEND —

I Hereby Certify That The Above Plat is a True and Correct Representation of the Survey

U.S. ARMY CORPS OF ENGINEERS
TULSA DISTRICT

- △ COPE BRASS CAP
- ORIGINAL CORNER
- IRON PIN w/CAP

Basil E. Scott Jr.
BASIL E. SCOTT JR. L.S. 545