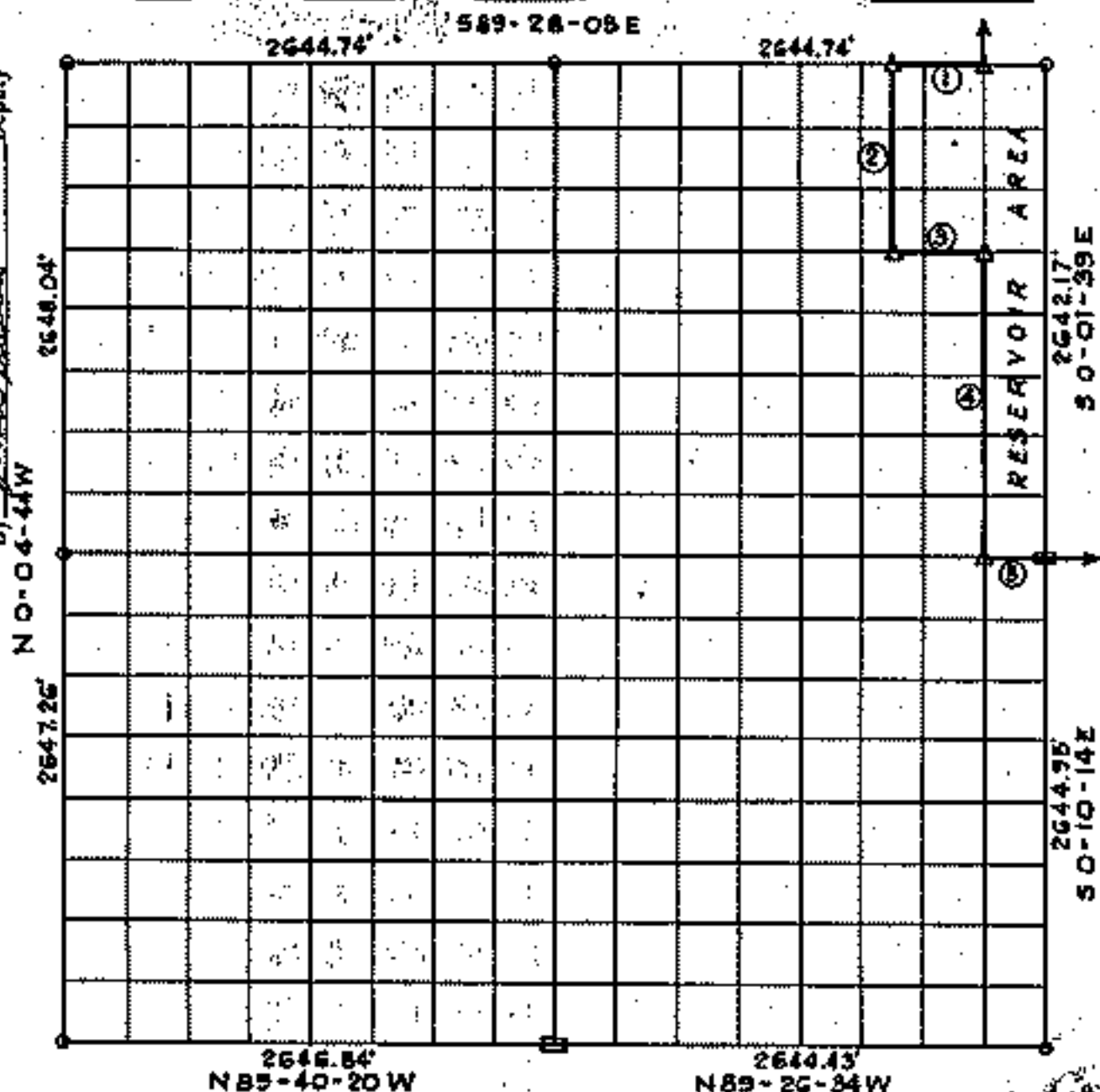


Performed under Contract Number DACW56-77-C-0058
SEC. 17, T. 19 N., R. 19 E., COUNTY MAYES

Filed by Sammy Howard, Co. Clerk
of Mayes County, Okla.
By Sammy Howard, Co. Clerk
Deputy



Course No.	Distance	Bearing	Course No.	Distance	Bearing
1	495.79'	N89-28-05W			
2	991.16'	S0-03-04E			
3	495.64'	S89-29-16E			
4	1652.09'	S0-02-13E			
5	330.16'	S89-31-53E			

Certificate of Survey

I hereby certify that the above plat is a true and correct representation of the survey made in Sec. 17, T. 19 N., R. 19 E., Mayes County, Oklahoma

Sheet 1 of 2

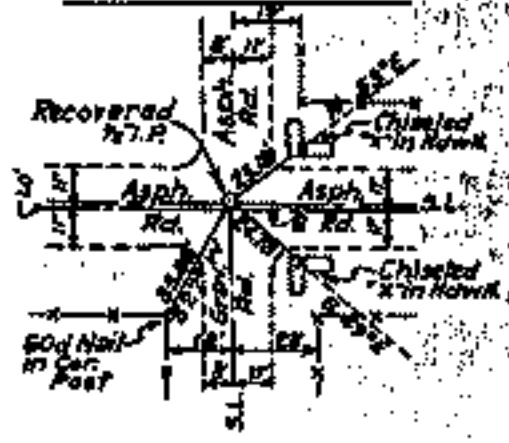
Legend

- △ Monument
- Orig. Corner

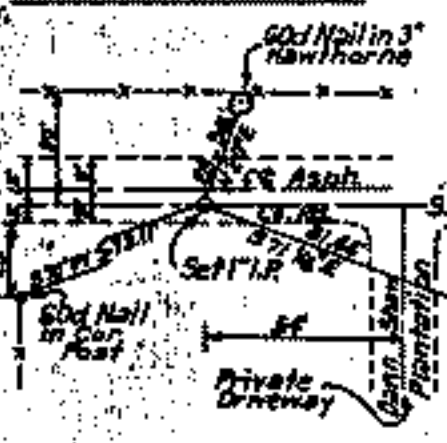
Scale: 1:10000

SECTION AND QUARTER SECTION CORNER REFERENCES FOR SECTION 17, T.19N R.19E, COUNTY MAYES

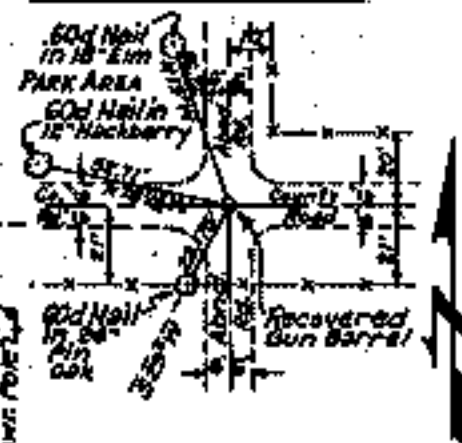
N.W. CORNER



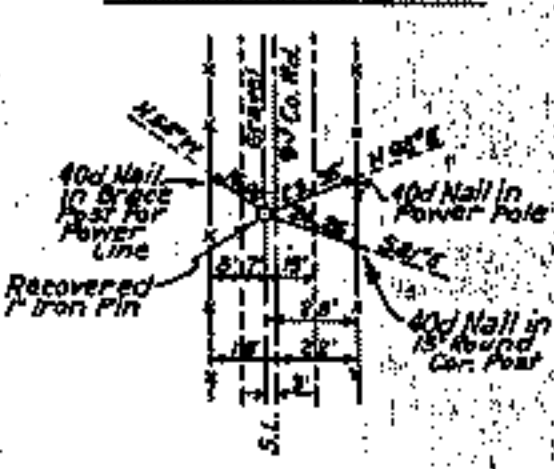
NORTH 1/4 COR.



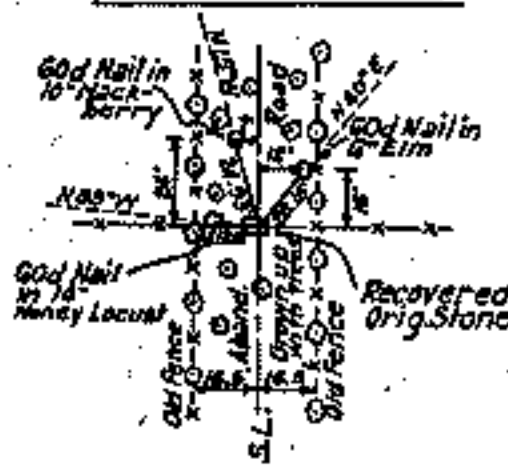
N.E. CORNER



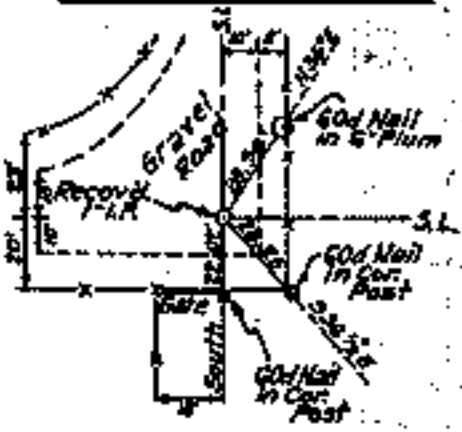
WEST 1/4 COR.



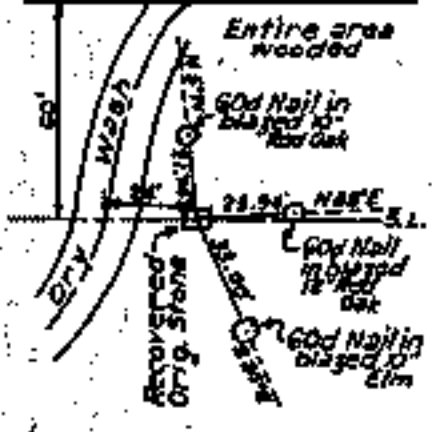
EAST 1/4 COR.



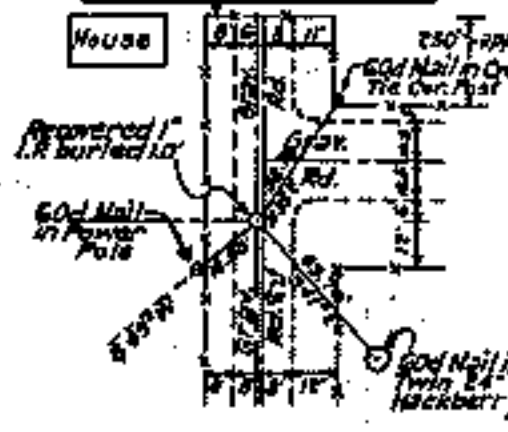
S.W. CORNER



SOUTH 1/4 COR.



S.E. CORNER



Sheet 2 of 2

Scale: - 1" = 50'
Date: - May 1977
Field Book No. 5-1935

Certificate of Survey

I hereby certify that the above plat is a true and correct representation of the survey made in Section 17, T.19 N., R.19 E., Mayes County, Oklahoma.

Charles J. Finkiea
Charles J. Finkiea
Registered Land Surveyor - No. 35



Legend

- △ Monument
- Orig. Corner
- Iron Pin
- ▲ Mon. by O. H. D.