

REVISED 3-10-81

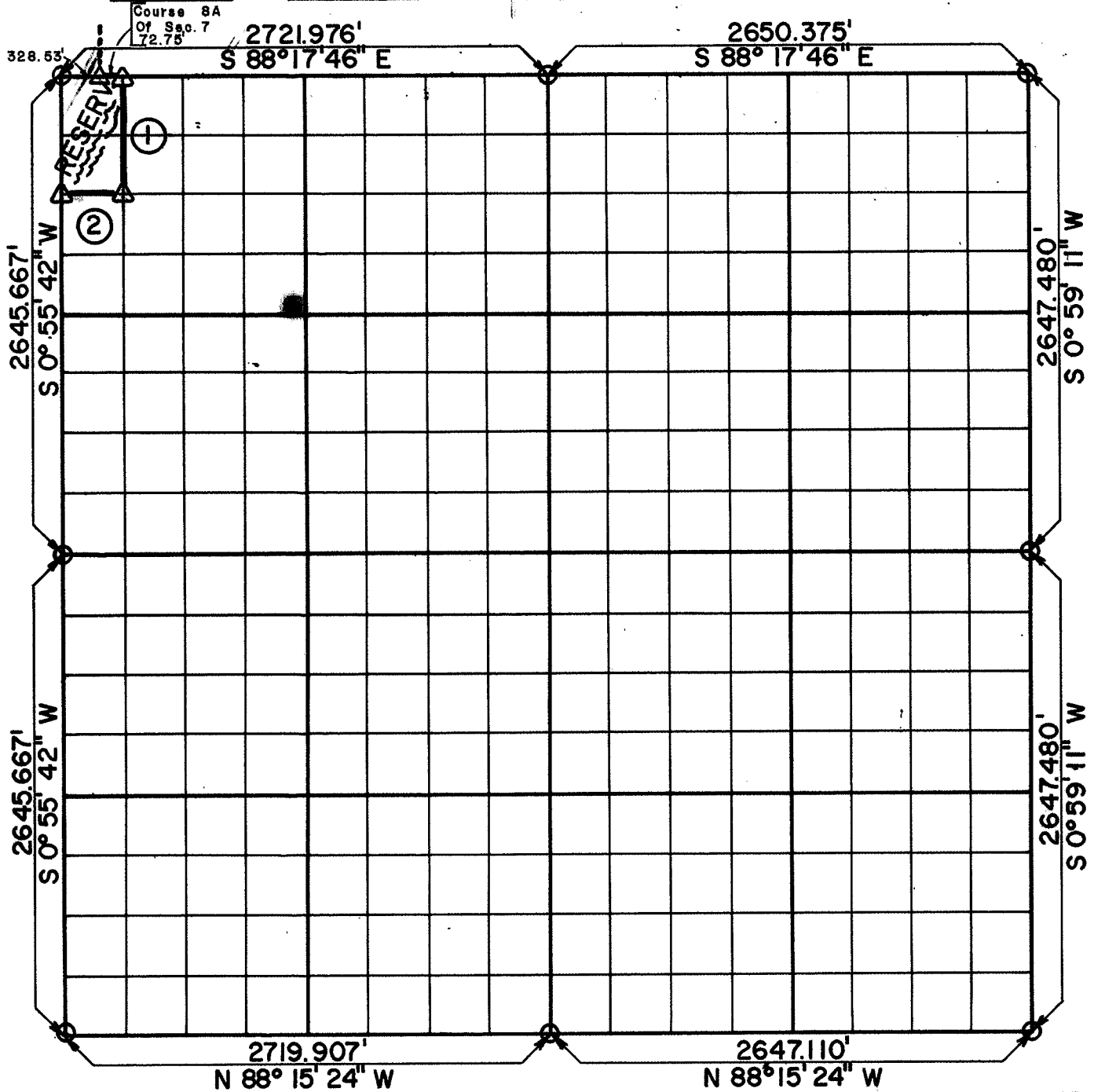
- 1- Add Course 8A Of Sec. 7
- 2- Add Distance From Sec. Cor.



PARTIAL BOUNDARY SURVEYS
 AREA "F" FORT GIBSON LAKE
 GRAND RIVER, OKLAHOMA

Performed Under Contract Number DACW-56-71-C-0109

SEC 18 T 19 N R 19 E COUNTY MAYES



Course No.	Distance	Bearing	Course No.	Distance	Bearing
1	660.000'	S 0°55'42" W			
2	401.28'	N 88°17'46" W			

STATE OF OKLAHOMA)
 COUNTY OF MAYES)
 This instrument was filed for Record
 at 9:00 o'clock P.M.
 MAR 12 1981
 SAMMY HOWARD, County Clerk
Sammy Howard

617688
 BOOK 301 PAGE 44

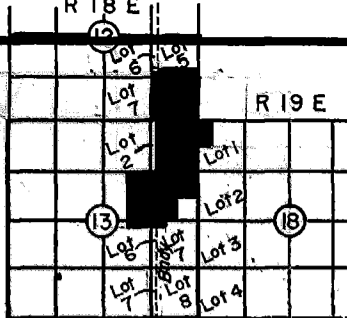
Field Book No. 5-1831 Date April, 1971

CERTIFICATE OF SURVEY
 I HEREBY CERTIFY THAT THE ABOVE PLAT IS A TRUE AND CORRECT REPRESENTATION OF THE SURVEY MADE IN SECTION 18, T 19 N, R 19 E, MAYES COUNTY, OKLA.

HOLWAY ENGINEERS INC.
 Under the Supervision of
 U.S. ARMY ENGINEER DISTRICT, TULSA
 CORPS OF ENGINEERS

- LEGEND
- △ MONUMENT
 - ORIGINAL CORNER
 - IRON PIN

Sammy Howard
 REGISTERED LAND SURVEYOR NO. 218



PARTIAL BOUNDARY SURVEYS

FT. GIBSON LAKE, OKLA.

SEC. 18 T-19 -N R-19 -E

12 & 13 T-19 -N R-18 -E

PARCEL #72

COUNTY MAYES

D.O. NO. 0002

Performed Under Contract

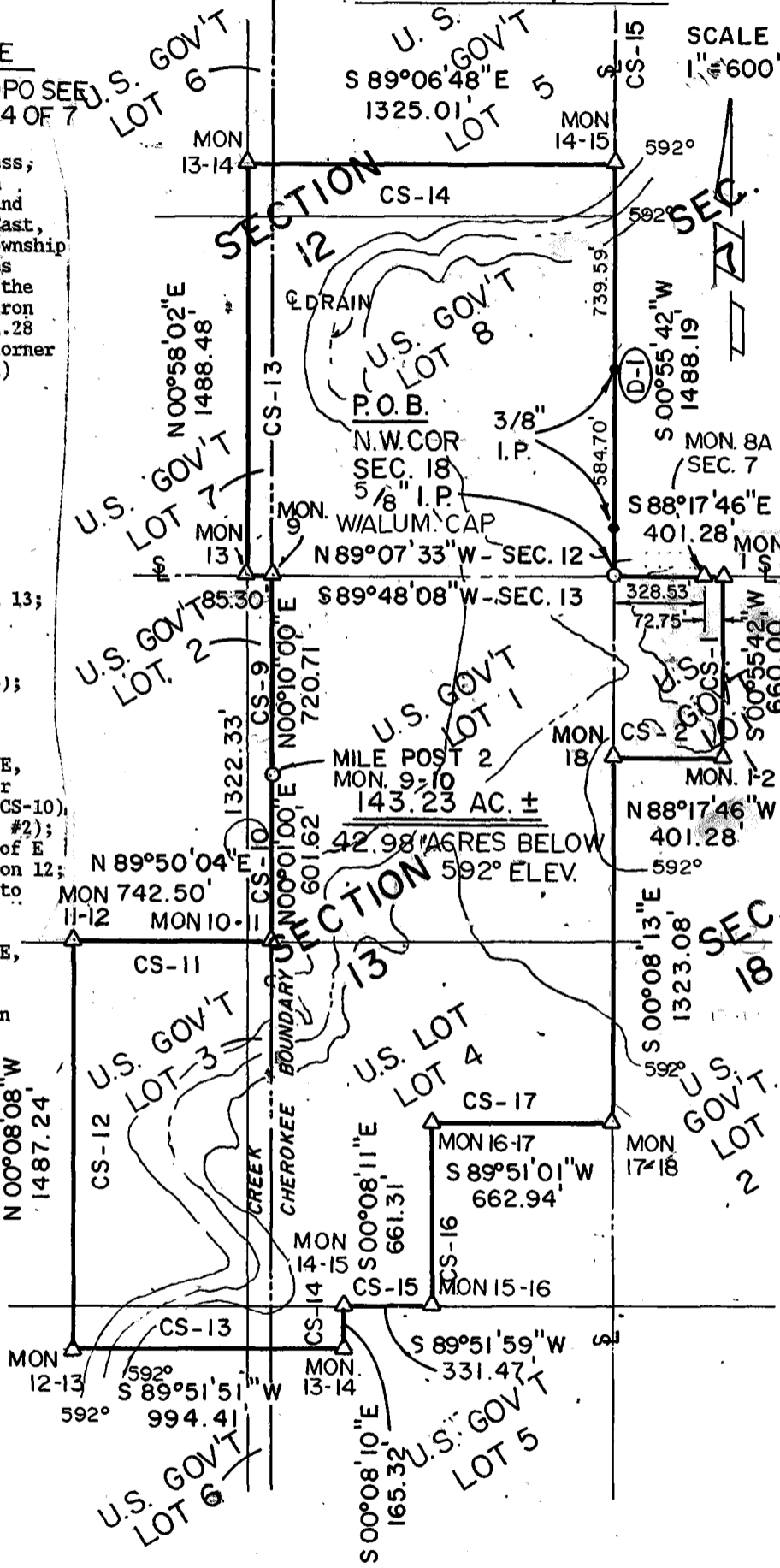
No. DACA 56-88-p-0047

NOTE

FOR TOPO SEE SHT. 3-4 OF 7

PARCEL #72 DESCRIPTION

Parcel #72 containing 143.23 Acres, more or less, located in U.S. Government Lots 5,6,7 and 8 in Section 12, and U.S. Government Lots 1,3,4,5 and 6 in Section 13, Township 19 North, Range 18 East, and in U.S. Government Lot 1 in Section 18, Township 19 North, Range 19 East, Indian Meridian, Mayes County, Oklahoma, described as: beginning at the northwest corner of Section 18, being a 5/8" iron pin with aluminum cap; thence S88°17'46"E, 401.28 feet along section line to a C of E boundary corner (mon-1); thence S00°55'42"W, 660.00 feet (CS-1) to a C of E boundary corner (mon 1/2); thence N88°17'46"W, 401.28 feet (CS-2) to a C of E boundary corner, being on the west line of Section 18; thence S00°08'13"E, 1323.08 feet on section line to a C of E boundary corner (mon-17); thence S89°51'01"W, 662.94 feet (CS-17) to a C of E boundary corner in Sections 13, 19 and 18 (mon 16/17); thence S00°08'11"E, 661.31 feet (CS-16) to a C of E boundary corner (mon 15/16), being on the south line of U.S. Government Lot 4 in Section 13; thence S89°51'59"W, 331.47 feet (CS-15) along said Lot line to a C of E boundary corner (mon 14/15); thence S00°08'10"E, 165.32 feet (CS-14) to a C of E boundary corner (mon 13/14); thence S89°51'51"W, 994.41 feet (CS-13) to a C of E boundary corner (mon 12/13); thence N00°08'08"W, 1487.24 feet (CS-12) to a C of E boundary corner (mon 11/12); thence N89°50'04"E, 742.50 feet (CS-11) to a C of E boundary corner (mon 10/11); thence N00°01'00"E, 601.62 feet (CS-10) to a Creek/Cherokee boundary marker (mile post #2); thence N00°10'00"E, 720.71 feet (CS-9) to a C of E boundary corner (mon 9) on south line of Section 12; thence N89°07'33"W, 85.30 feet on section line to a C of E boundary corner (mon 13); thence N00°58'02"E, 1488.48 feet (CS-13) to a C of E boundary corner (mon 13/14); thence S89°06'48"E, 1325.01 feet (CS-14) to a C of E boundary corner (mon 14) on the east line of Section 12; thence S00°55'42"W, 1488.19 feet on the section line to the point of beginning.



BASIS OF BEARINGS AS PER C OF E BNDRY. PLATS & BOOKS!

Field Book No. 5-1829 5-1831 Date 12/88

CERTIFICATE OF SURVEY

I Herby Certify That The Above Plat is a True and Correct Representation of the Survey.

BASIL E. SCOTT, JR. L.S. 545

SCOTT & ASSOCIATES, INC. LAND SURVEYORS

U.S. ARMY CORPS OF ENGINEERS TULSA DISTRICT

LEGEND

- △ C of E BRASS GAP
- ORIGINAL CORNER
- IRON PIN W/CAP