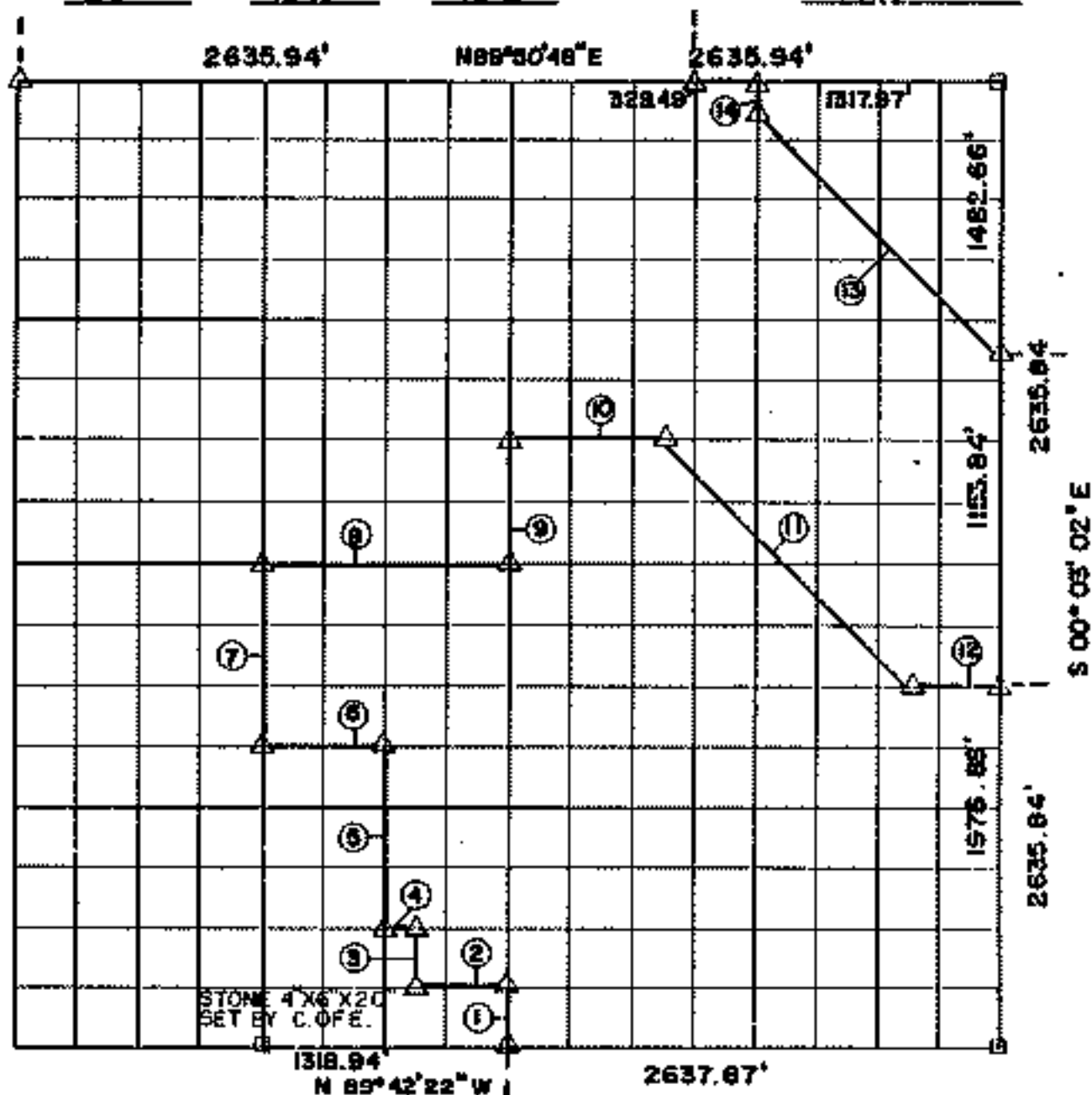


# RECORD BOUNDARY PLAT

LAKE FORT GIBSON, OKLAHOMA

SEC 23 T 19 N R 19 E COUNTY MAYES



Course No.	Distance	Bearing	Course No.	Distance	Bearing
1	328.40	N 00° 01' 52" W	14	164.47	N 00° 02' 22" W
2	494.57	N 89° 43' 47" W			
3	328.21	N 00° 01' 35" W			
4	164.86	N 89° 45' 12" W			
5	984.40	N 00° 01' 32" W			
6	659.36	N 89° 49' 22" W			
7	983.69	N 00° 01' 12" W			
8	1318.94	N 89° 53' 37" E			
9	656.80	S 00° 01' 52" E			
10	823.96	N 89° 55' 02" W			
11	1865.62	N 45° 00' 12" W			
12	494.47	N 89° 50' 47" W			
13	1861.63	N 45° 03' 42" W			

NOTE: MONUMENTS IN FIELD ARE DESCRIBED BY SECTIONAL SUBDIVISION NOT COURSES AS DEPICTED BY THIS PLAT. ALL BEARINGS ARE UNIQUE & ASSUMED FOR THIS PLAT.

OCT., 1984 Field Book No. 1385 Date MARCH, 1982

SURVEY PERFORMED BY THE  
CORPS OF ENGINEERS, TULSA DISTRICT  
PLATS PREPARED BY  
ENTZ ENGINEERING & ASSOCIATES INC. AND  
HUFFMAN SURVEYING CO., INC.

LEGEND

- ▲ MONUMENT
- ORIGINAL CORNER
- IRON PIN