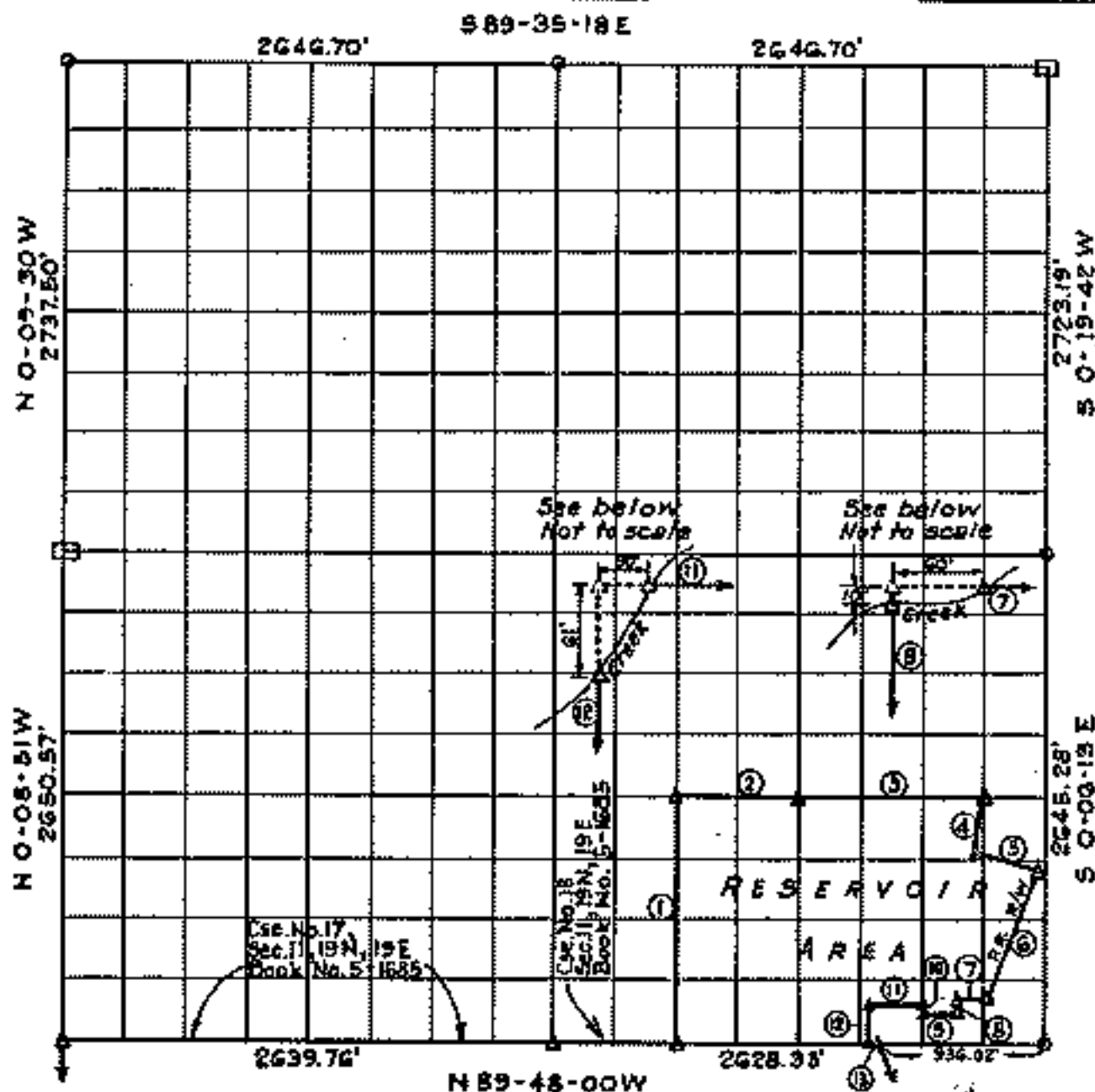


PARTIAL BOUNDARY SURVEYS
FORT GIBSON LAKE, AREA "A"
OKLAHOMA.

Performed under Contract Number DACW56-77-C-0058
 SEC. 2, T. 19 N., R. 19 E., COUNTY MAYES



Course No	Distance	Bearing	Course No	Distance	Bearing
1	1323.66'	N 0-05-08 W	11	278.70'	WEST
2	658.20'	S 89-46-16 E	12	208.70'	SOUTH
3	976.40'	S 89-46-16 E	13	7.94'	S 89-48-00 E
4	217.00'	S 8-40-00 W			
5	353.89'	S 65-20-00 E			
6	761.76'	S 22-21-07 W			
7	155.18'	WEST			
8	89.00'	SOUTH			
9	170.00'	WEST			
10	42.70'	NORTH			

Certificate of Survey

I hereby certify that the above plat is a true and correct representation of the survey made in Section 2, T. 19 N., R. 19 E., Mayes County, Oklahoma.

Charles J. Finklea
 Charles J. Finklea
 Registered Land Surveyor No. 35

Scale:- 1:10000
 Date:- May 1977
 Field Book N 5-1934

Sheet 1 of 2

Legend

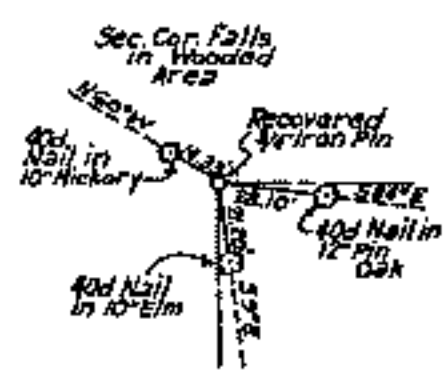
- △ Monument
- Orig. Corner
- Iron Pin
- ▲ Mon. by O.H.D.



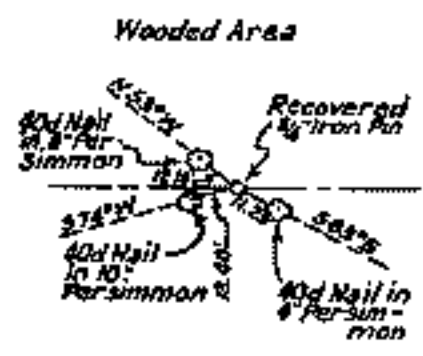
FURT GIBSON LAKE, AREA A
OKLAHOMA

SECTION AND QUARTER SECTION CORNER
REFERENCES FOR
SECTION 2, T.19N., R.19E., COUNTY MAYES

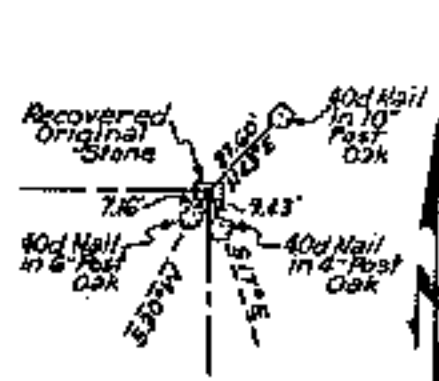
N.W. CORNER



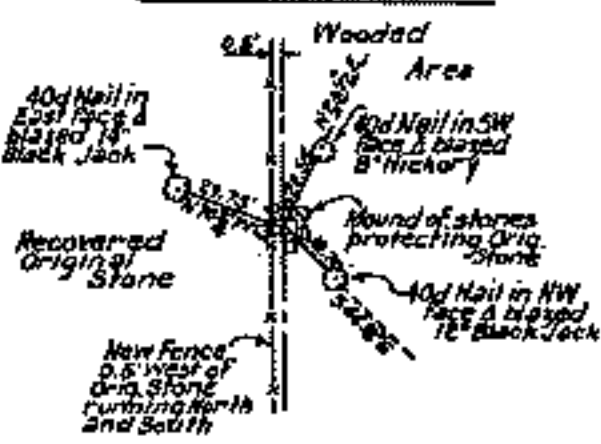
NORTH 1/4 COR.



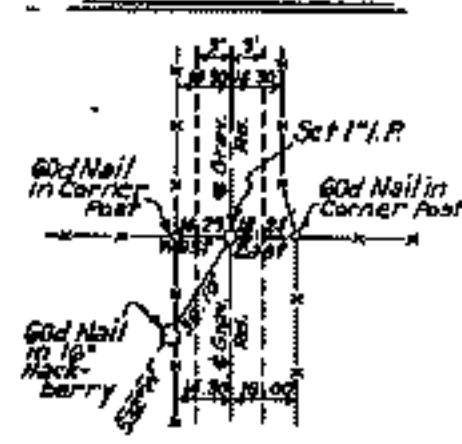
N.E. CORNER



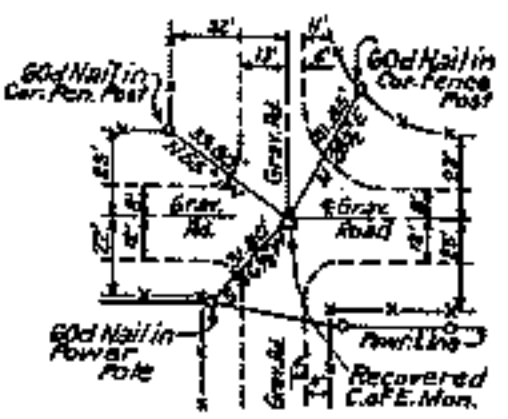
WEST 1/4 COR.



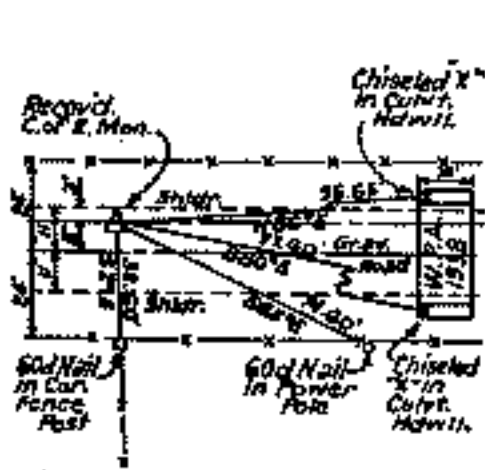
EAST 1/4 COR.



S.W. CORNER



SOUTH 1/4 COR.



S.E. CORNER



Sheet 2 of 2

Certificate of Survey

I hereby certify that the above plat is a true and correct representation of the survey made in Sec. 2, T.19N., R.19E., Mayes County, Oklahoma.

Charles J. Finklea
Charles J. Finklea
Registered Land Surveyor No. 35



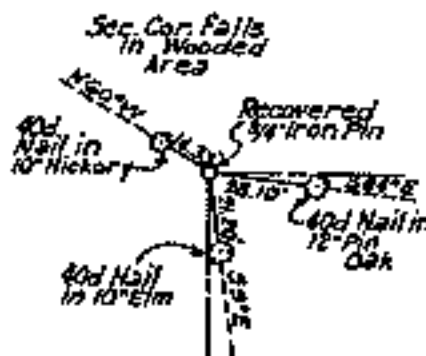
Scale: 1" = 50'
Date: May 1977
Field Book No. 5-19

Legend

- △ Monument
- Orig. Corner
- Iron Pin
- ▲ Mon. by O.H.

TURTLE GIBSON LAKE, AREA "A"
OKLAHOMA
SECTION AND QUARTER SECTION CORNER
REFERENCES FOR
SECTION 2, T.19N., R.19E., COUNTY MAYES

N.W. CORNER



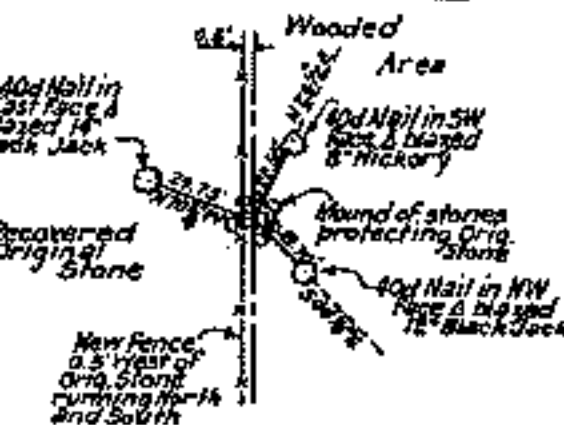
NORTH 1/4 COR.



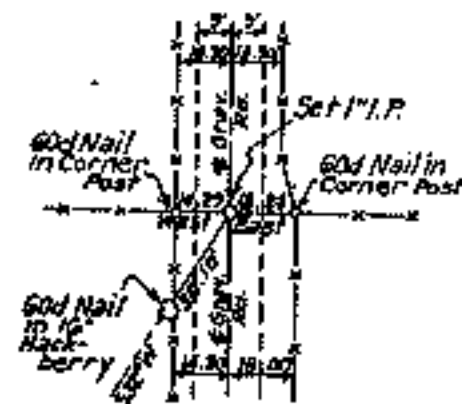
N.E. CORNER



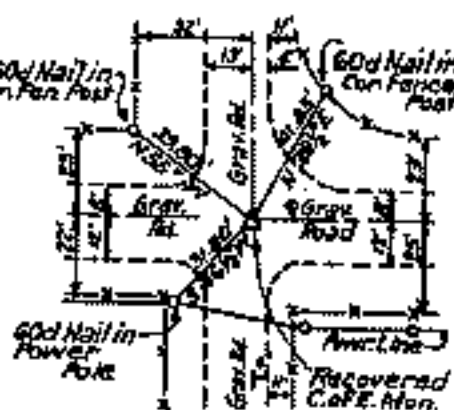
WEST 1/4 COR.



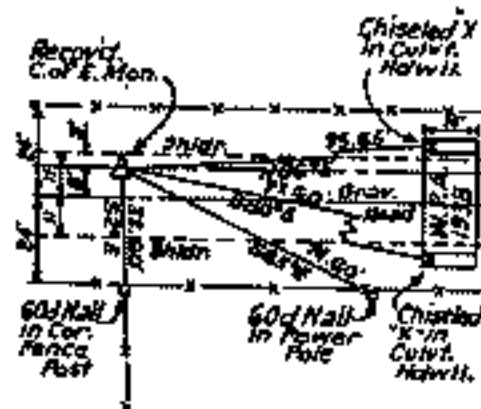
EAST 1/4 COR.



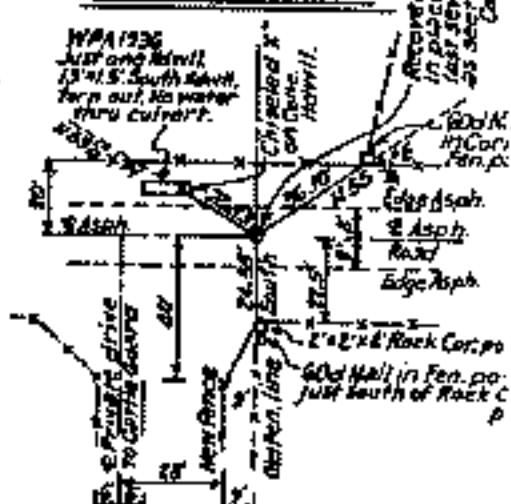
S.W. CORNER



SOUTH 1/4 COR.



S.E. CORNER



Sheet 2 of 2

Certificate of Survey

hereby certify that the above is a true and correct representation of the survey made in Sec. 2, T.19N., R.19E., Mayes County, Oklahoma.

Charles J. Finklea
 Charles J. Finklea
 Registered Land Surveyor No. 35



Scale: - 1" = 50'
 Date: - May 1977
 Field Book No. 5-19:

Legend

- △ Monument
- Orig. Corner
- Iron Pin
- ▲ Mon. by O.H.I.