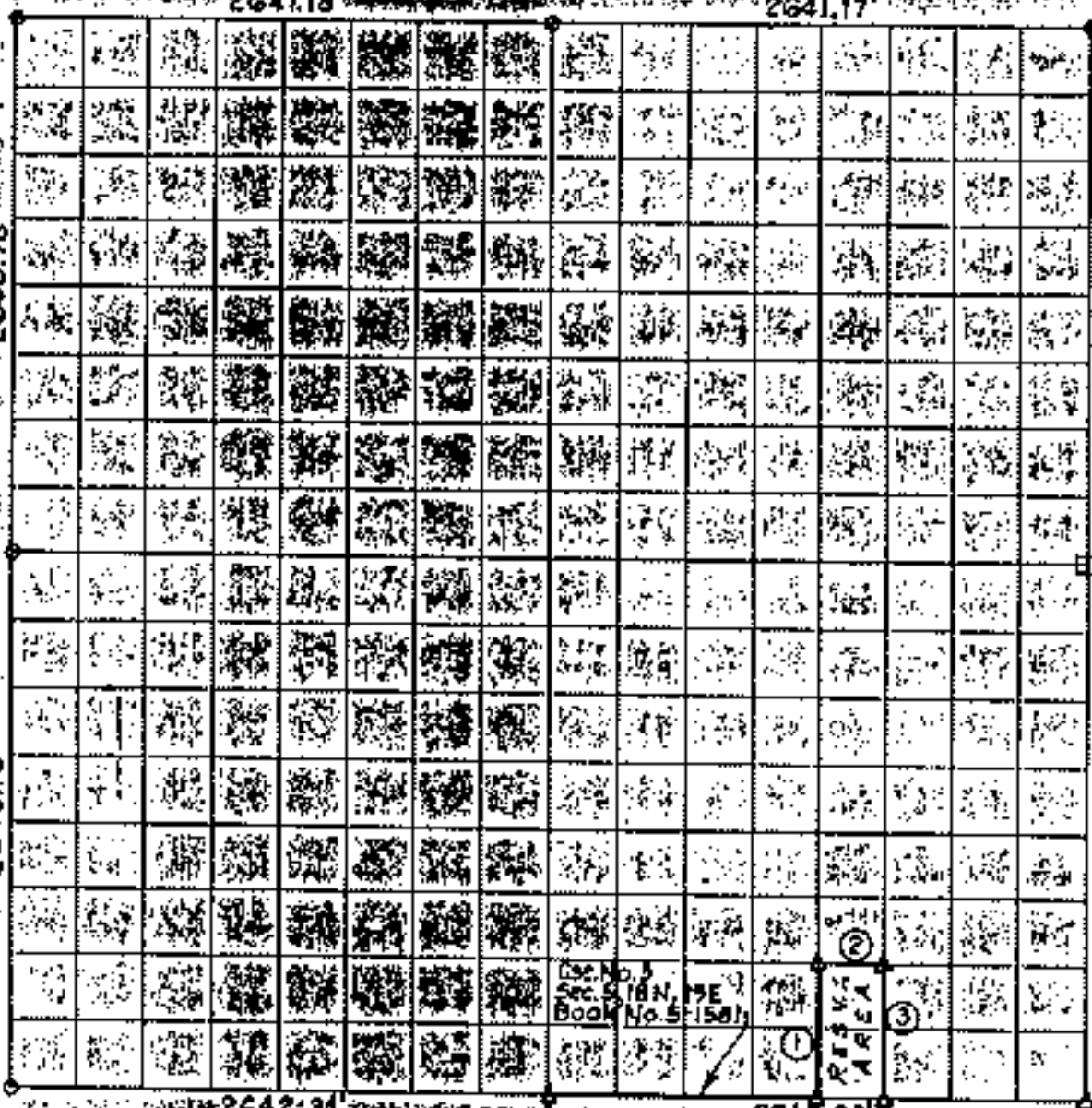


301964

PARTIAL BOUNDARY SURVEYS
FORT GIBSON LAKE, AREA "A" 537
OKLAHOMA BOOK PAGE

Performed under Contract Number DACW56-77-C-0058
SEC. 32, T. 19 N., R. 19 E., COUNTY, MAYES

Filed 7 day of 19 21 Mayes County, Okla.
Book 5, Page 1
By *Sammy Howard* Deputy



Course No.	Distance	Bearing	Course No.	Distance	Bearing
1	661.64	N 0-07-03 W			
2	330.19	S 89-54-17 E			
3	661.62	S 0-07-36 E			

Certificate of Survey

I hereby certify that the above plat is a true and correct representation of the survey made in Section 32, T. 19 N., R. 19 E., Mayes County, Oklahoma.

Charles J. Finkler
Charles J. Finkler

Scale: 1:10,000
Date: May, 1977
Field Book No. 5-1936

Sheet 1 of 2

Legend

- ▲ Monument
- Orig. Corner
- Iron Pin
- ▲ Mon. by O.H.D.

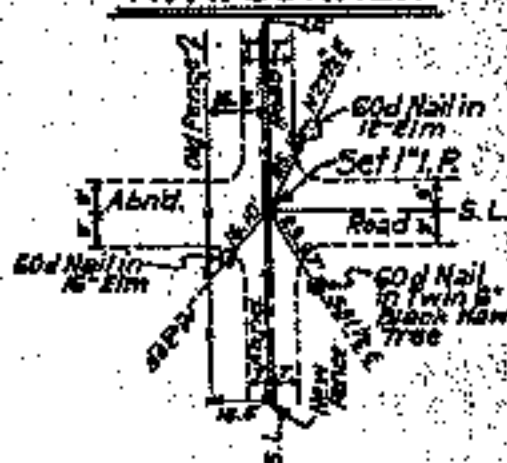
FORT GIBSON LAKE, AREA "A" OKLAHOMA

BOOK 537 PAGE 263

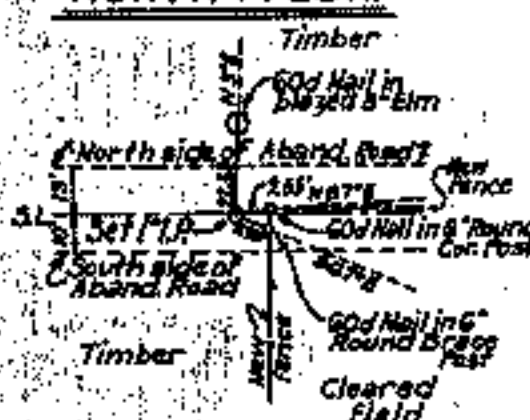
SECTION AND QUARTER SECTION CORNER REFERENCES FOR

SECTION 32, T. 19N., R. 19E., COUNTY MAYES

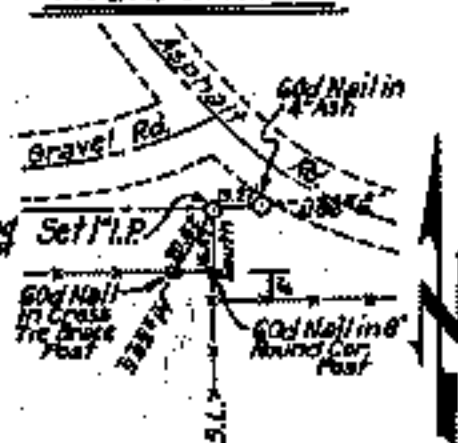
N.W. CORNER



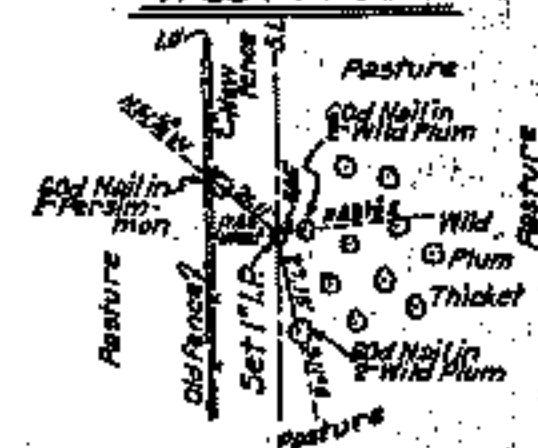
NORTH 1/4 COR.



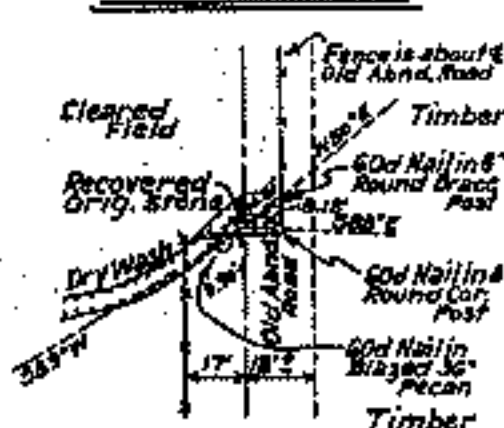
N.E. CORNER



WEST 1/4 COR.

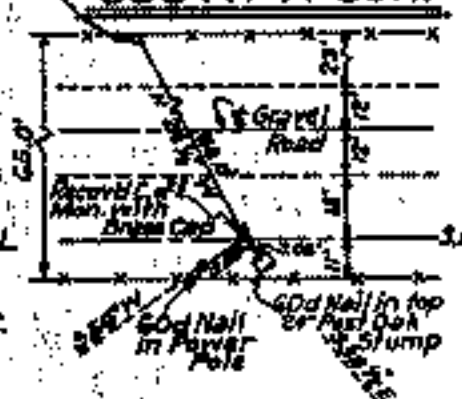


EAST 1/4 COR.

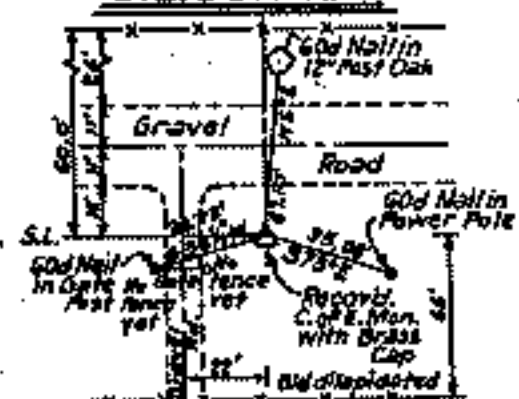


God Nail in fence with sign
No hunting, fishing or trespassing Parker Ranch

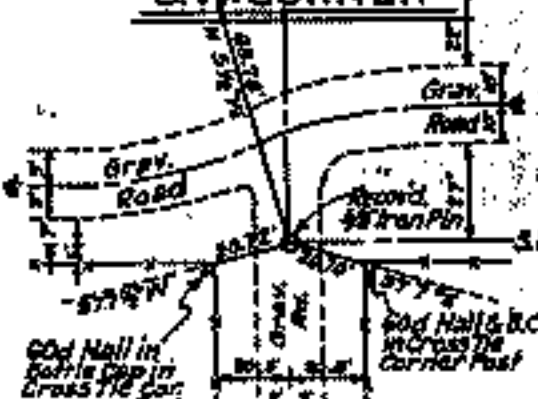
SOUTH 1/4 COR.



S.E. CORNER



S.W. CORNER



Sheet 2 of 2

Scale: 1" = 50'
Date: May 1977
Field Book No. 5-193

Certificate of Survey

I hereby certify that the above plat is a true and correct representation of the survey made in Sec. 32, T. 19N., R. 19E., Mayes County, Oklahoma.

Charles J. Finklea
Charles J. Finklea



Legend

- △ Monument
- Orig. Corner
- Iron Pin
- ▲ Mon. by O.H.