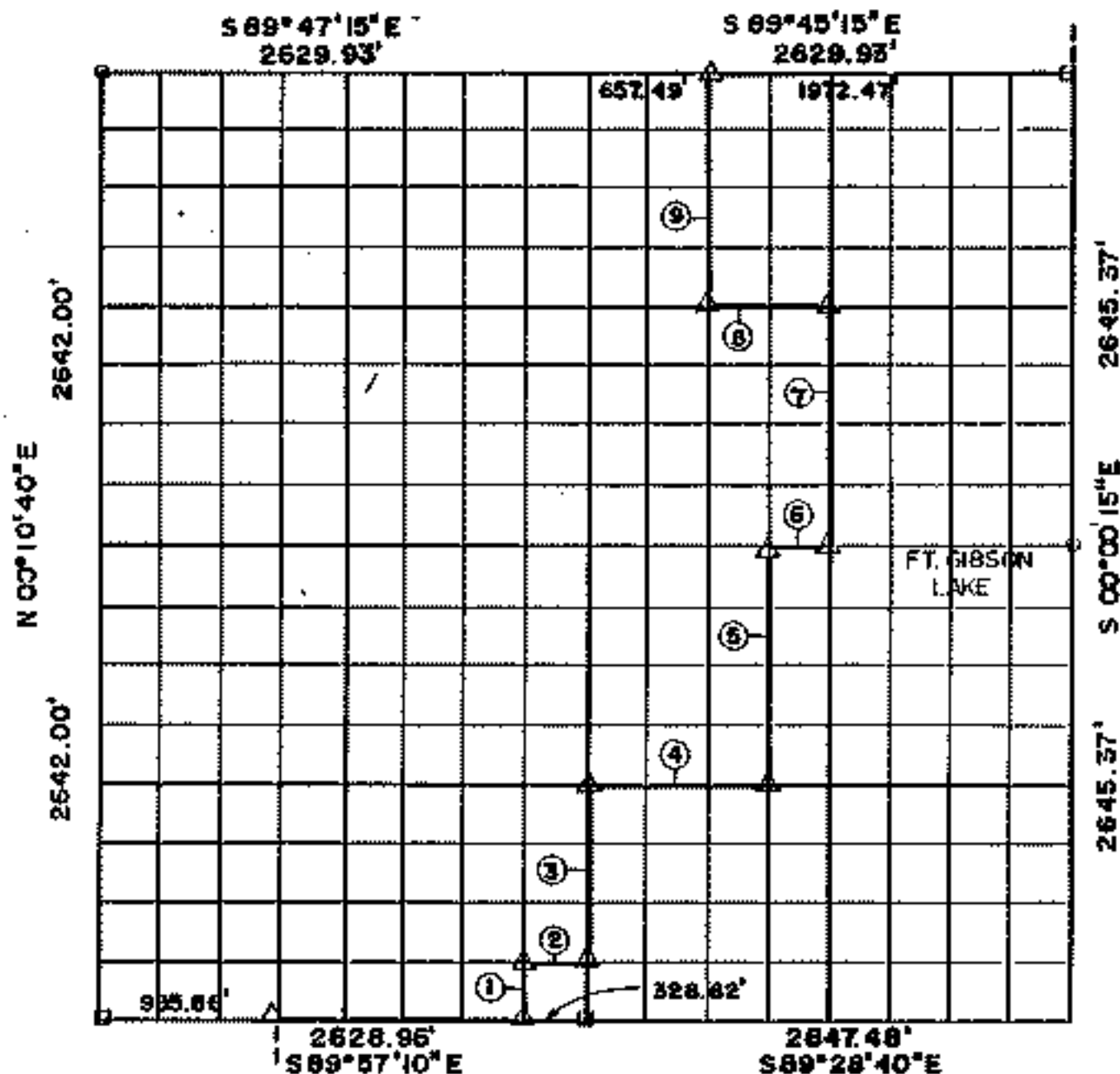


RECORD BOUNDARY PLAT

LAKE FORT GIBSON, OKLAHOMA

SEC 34 T 19 N R 19 E COUNTY MAYES



| Course No. | Distance | Bearing | Course No. | Distance | Bearing |
|------------|----------|-----------------|------------|----------|---------|
| 1 | 328.24 | N 00° 11' 20" E | | | |
| 2 | 328.63 | S 89° 40' 40" E | | | |
| 3 | 987.30 | N 00° 11' 20" E | | | |
| 4 | 990.80 | S 89° 36' 40" E | | | |
| 5 | 1313.53 | N 00° 07' 12" E | | | |
| 6 | 323.85 | S 89° 45' 10" E | | | |
| 7 | 1322.26 | N 00° 05' 50" E | | | |
| 8 | 658.60 | N 89° 46' 10" W | | | |
| 9 | 1322.05 | N 00° 08' 35" E | | | |
| | | | | | |
| | | | | | |
| | | | | | |
| | | | | | |
| | | | | | |
| | | | | | |
| | | | | | |
| | | | | | |

NOTE: MONUMENTS IN FIELD ARE DESCRIBED BY SECTIONAL SUBDIVISION NOT COURSES AS DEPICTED BY THIS PLAT. ALL BEARINGS ARE UNIQUE & ASSUMED FOR THIS PLAT.

SEPT., 1884 Field Book No. 8-1403 Date MAY, 1882

SURVEY PERFORMED BY THE
CORPS OF ENGINEERS, TULSA DISTRICT
PLATS PREPARED BY
ENTZ ENGINEERING & ASSOCIATES INC. AND
HUFFMAN SURVEYING CO., INC.

LEGEND
 ▲ MONUMENT
 = ORIGINAL CORNER
 ○ IRON PIN

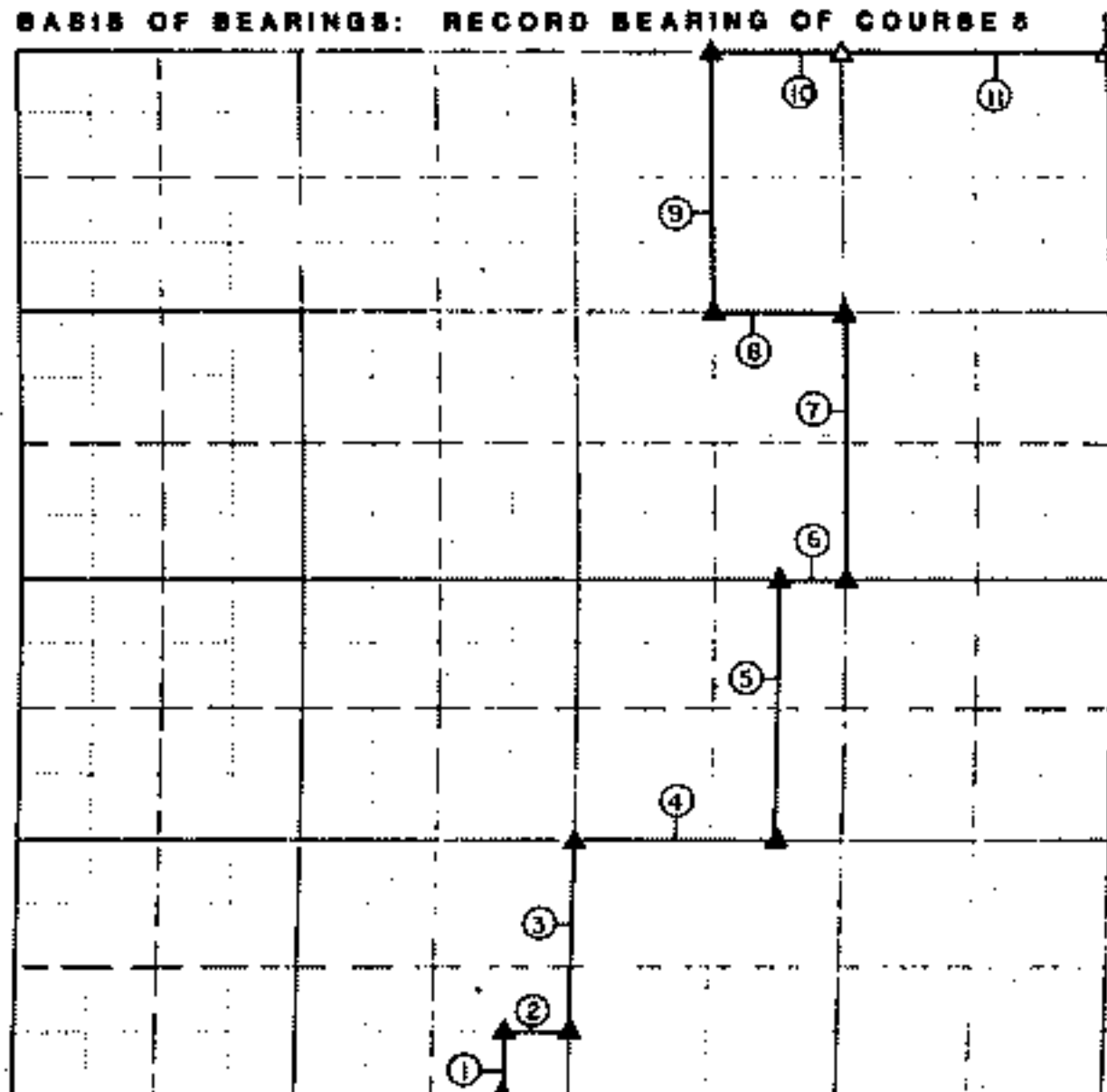
RETRACEMENT SURVEY PLAT

LAKE FORT GIBSON, OKLAHOMA

PERFORMED UNDER CONTRACT NUMBER DAC458-86-D-0078

SEC. 34 , T 19 NORTH, R 19 EAST COUNTY MAYES

BASIS OF BEARINGS: RECORD BEARING OF COURSE 8



| Course No | Distance | Bearing | Course No | Distance | Bearing |
|-----------|----------|--------------|-----------|----------|---------|
| 1 | 329.82 | N 00°14'28"E | | | |
| 2 | 327.94 | S 89°50'26"E | | | |
| 3 | 886.55 | N 00°11'24"E | | | |
| 4 | 988.81 | S 89°34'56"E | | | |
| 5 | 1319.14 | N 00°25'28"E | | | |
| 6 | 329.58 | S 89°46'08"E | | | |
| 7 | 1322.82 | N 00°07'09"E | | | |
| 8 | 858.54 | N 89°46'10"W | | | |
| 9 | 1321.58 | N 00°10'07"E | | | |
| 10 | 857.02 | S 89°46'39"E | | | |
| 11 | 1314.98 | S 89°46'39"E | | | |

Field Book No 6-1403

Date SEPTEMBER, 1986

CRAFTON, TULL, SPANN & YOE, INC.

under the supervision of
U.S. ARMY ENGINEER DISTRICT

LEGEND

△ SET MONUMENT
▲ FOUND MONUMENT