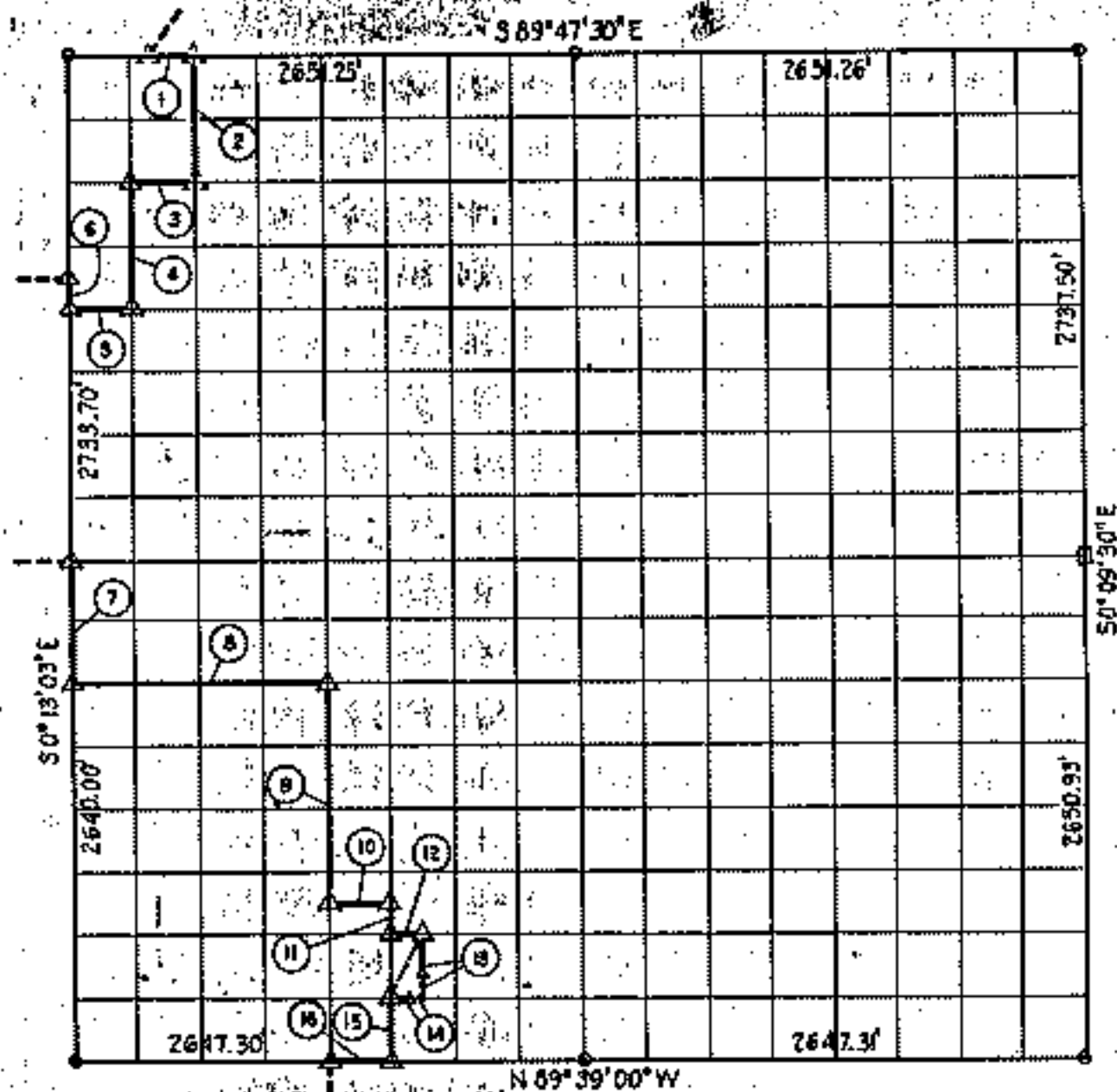


SEC. 3 - T19N - R 19 E. MAYES COUNTY



Course No.	Distance	Bearing	Course No.	Distance	Bearing
1	249.15	S 89° 47' 30" E	9	1156.10	S 0° 12' 10" E
2	754.00	S 0° 15' 30" E	10	331.12	S 89° 41' 23" E
3	330.22	N 89° 45' 58" W	11	165.21	S 0° 11' 57" E
4	660.03	S 0° 12' 50" E	12	165.48	S 89° 40' 47" E
5	331.32	N 89° 45' 36" W	13	330.47	S 0° 11' 50" E
6	176.71	N 0° 13' 03" W	14	165.47	N 89° 39' 37" W
7	660.00	S 0° 13' 03" E	15	330.43	S 0° 11' 57" E
8	1324.14	S 89° 44' 20" E	16	330.91	N 89° 39' 00" W

Book No. 5-1682 Date: June, 1965

I, Charles J. Finklea, a Registered Professional Engineer, do hereby certify that the above is a true and accurate survey of Sec. 3-T19N-R19E as made under my supervision.

Charles J. Finklea