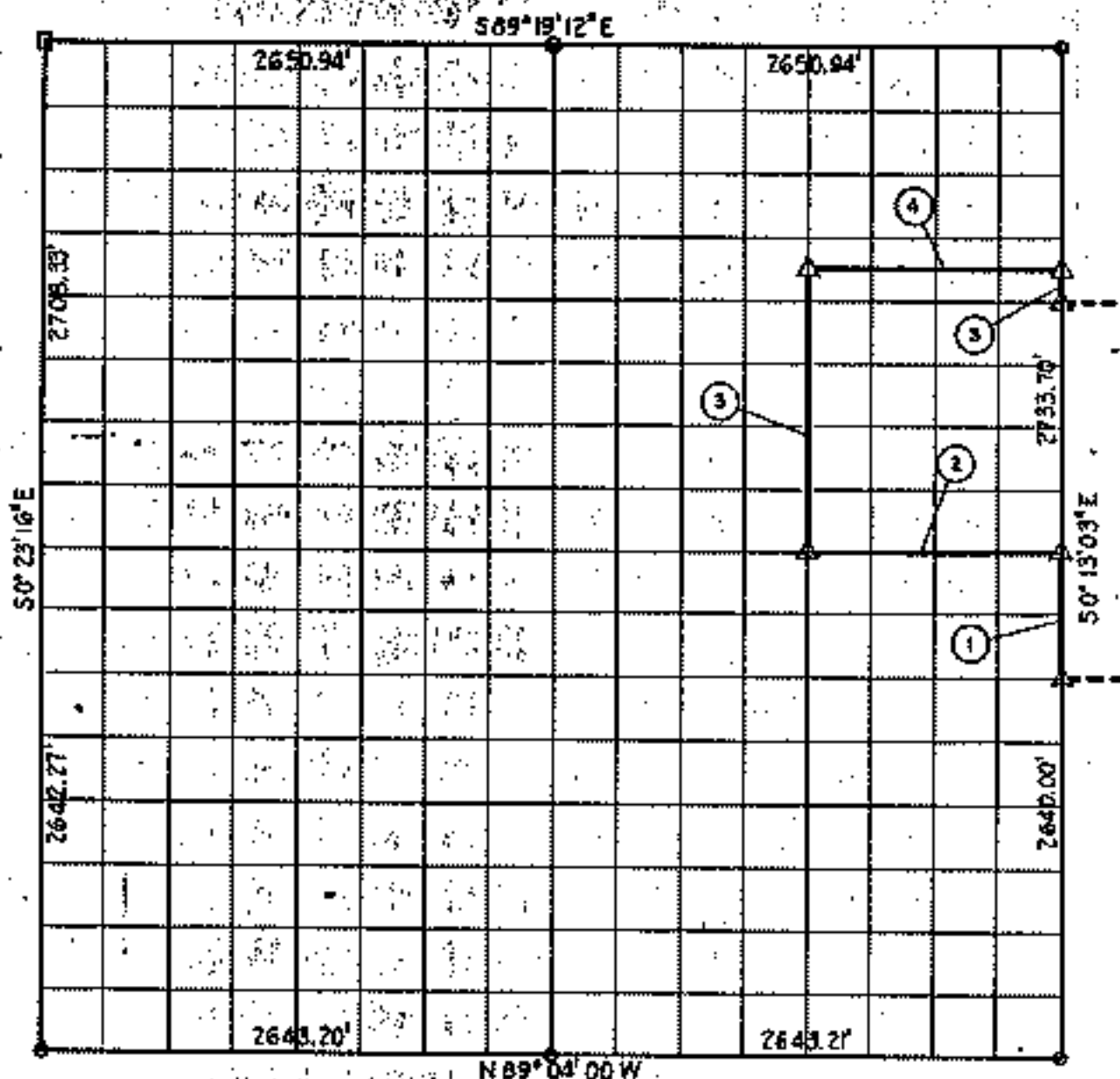


SEC. 4 - T 19 N - R 19 E. MAYES COUNTY



Course No.	Distance	Bearing	Course No.	Distance	Bearing
1	660.00	N 90° 13' 03" W			
2	1323.57	N 89° 02' 38" W			
3	1496.38	N 0° 15' 36" W			
4	1324.70	S 89° 04' 06" E			
5	176.71	S 0° 13' 03" E			

Book No. 5-1683 Date: June, 1965

I, Charles J. Finkler, a Registered Professional Engineer, do hereby certify that the above is a true and accurate survey of Sec. 4--T19N-R19E as made under my supervision.

Charles J. Finkler