

RECORD BOUNDARY PLAT

LAKE FORT GIBSON, OKLAHOMA

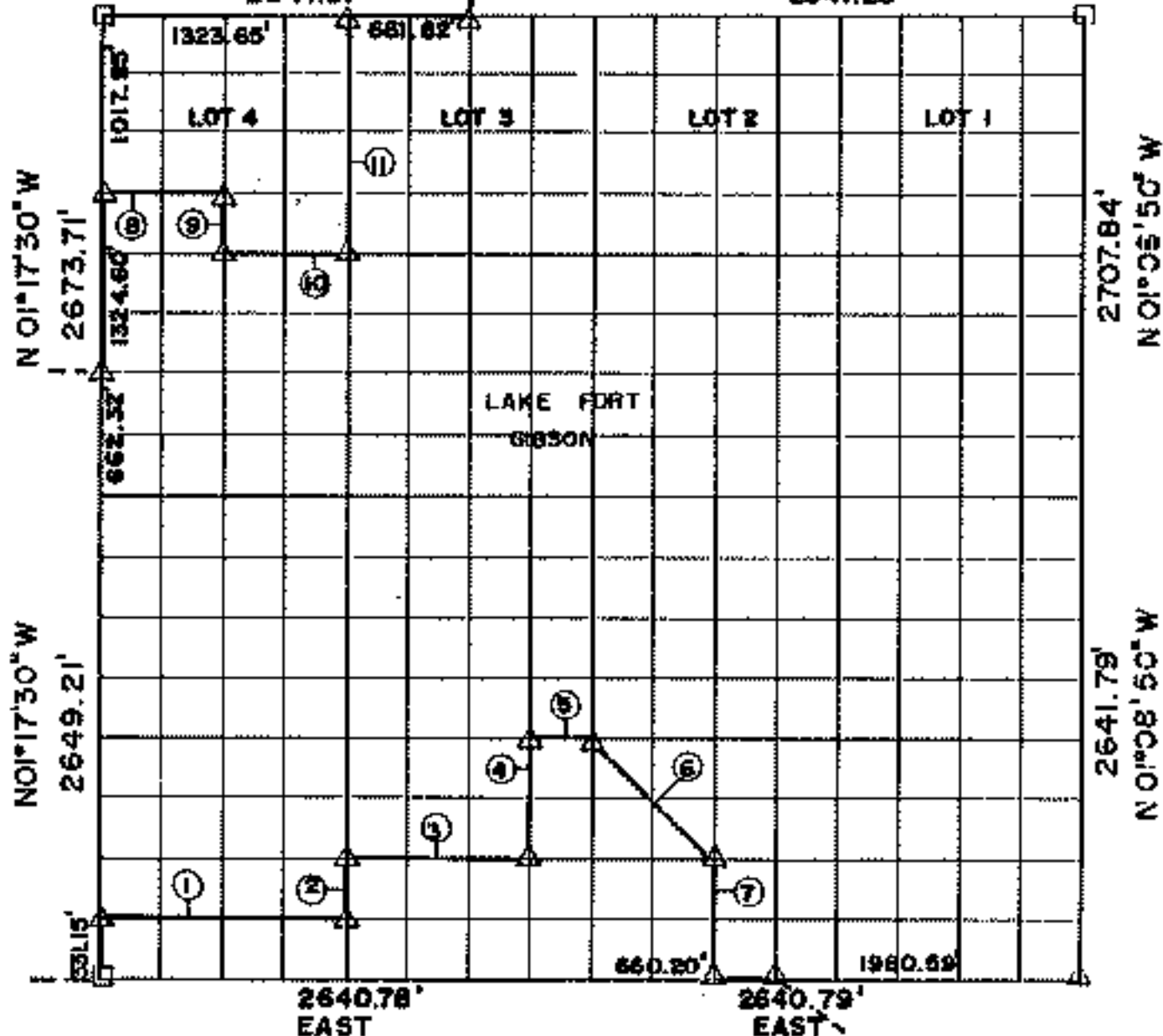
SEC 5 T 19N R 19E COUNTY MAYES

N 89° 41' 50" E

N 89° 41' 50" E

2647.31

2647.29'



Course No.	Distance	Bearing	Course No.	Distance	Bearing
1	1320.62	S 69° 59' 30" E			
2	330.85	N 01° 15' 20" W			
3	980.66	S 89° 59' 00" E			
4	661.62	N 01° 13' 40" W			
5	330.31	S 89° 59' 00" E			
6	944.79	S 45° 33' 20" E			
7	661.25	S 01° 12' 05" E			
8	661.54	S 89° 53' 00" E			
9	331.64	S 01° 16' 25" E			
10	661.44	S 89° 53' 30" E			
11	1358.57	N 01° 15' 20" W			

NOTE: MONUMENTS IN FIELD ARE DESCRIBED BY SECTIONAL SUBDIVISION NOT COURSES AS DEPICTED BY THIS PLAT. ALL BEARINGS ARE UNIQUE & ASSUMED FOR THIS PLAT.

OCT., 1984

Field Book No. 5-1382 Date FEB., 1992

SURVEY PERFORMED BY THE
CORPS OF ENGINEERS, TULSA DISTRICT
PLATS PREPARED BY
ENTZ ENGINEERING & ASSOCIATES INC. AND
HUFFMAN SURVEYING CO., INC.

LEGEND

- A MONUMENT
- C ORIGINAL CORNER
- D MON. PIN