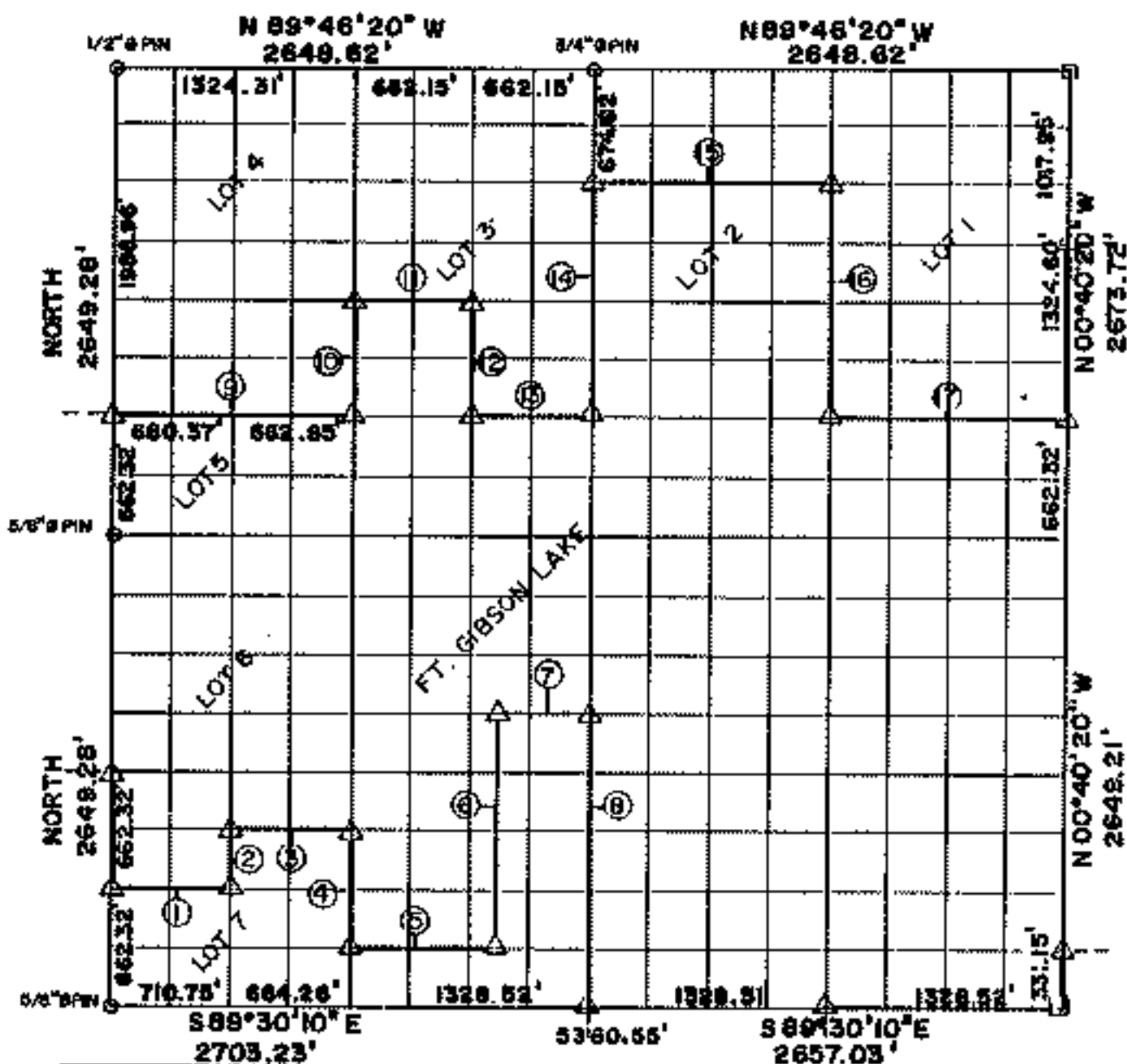


RECORD BOUNDARY PLAT

LAKE FORT GIBSON, OKLAHOMA

SEC 6 T 19 N R 19 E COUNTY MAYES



Course No.	Distance	Bearing	Course No.	Distance	Bearing
1	704.67'	S89°30'10" E	14	1324.62'	N00°35'00" W
2	331.16'	N00°31'30" W	15	1324.84'	S89°30'10" E
3	663.87'	S89°30'10" E	16	1324.81'	S00°37'40" E
4	662.32'	S00°32'50" E	17	1326.89'	S89°30'10" E
5	830.16'	S89°30'10" E			
6	1324.63'	N00°33'55" W			
7	497.71'	S89°30'10" E			
8	1655.78'	S00°35'00" E			
9	1343.32'	S89°30'10" E			
10	662.31'	N00°32'50" W			
11	662.69'	S89°30'10" E			
12	662.31'	S00°33'50" E			
13	662.95'	S89°30'10" E			

NOTE: MONUMENTS IN FIELD ARE DESCRIBED BY SECTIONAL SUBDIVISION NOT COURSES AS DEPICTED BY THIS PLAT. ALL BEARINGS ARE UNIQUE & ASSUMED FOR THIS SECTION.

SEPT. 1984 Field Book No. 5-1399 Date APR. 1953

SURVEY PERFORMED BY THE
CORPS OF ENGINEERS, TULSA DISTRICT
PLATS PREPARED BY
ENTZ ENGINEERING & ASSOCIATES INC. AND
HUFFMAN SURVEYING CO., INC.

LEGEND

- ⊕ MONUMENT
- ORIGINAL CORNER
- IRON PIN