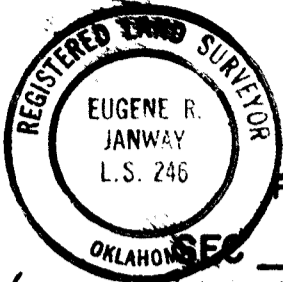


REVISED 8-11-81

- 1-Add Course 8A
- 2-Add Course 9A
- 3-Relocate Course 9
- 4-Revise Distance To Sec. Cor.

STATE OF OKLAHOMA } SS  
 COUNTY OF MAYES }  
 This instrument was Filed for Record  
 at 9:00 o'clock A M  
 MAR 12 1985

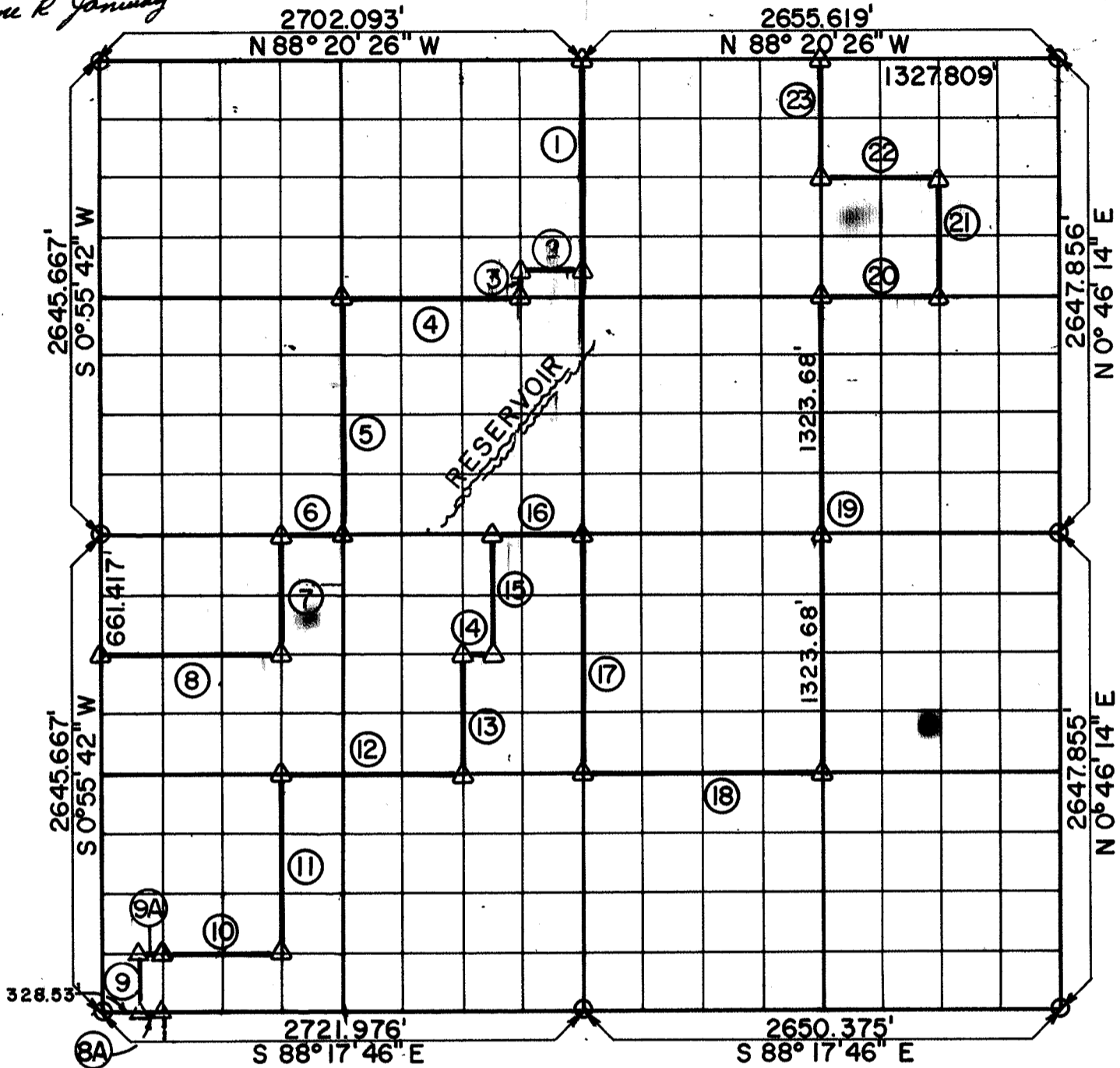


PARTIAL BOUNDARY SURVEYS  
 AREA "F" FORT GIBSON LAKE  
 GRAND RIVER, OKLAHOMA

and duly Recorded in Book \_\_\_\_\_ page \_\_\_\_\_  
 SAMMY HOWARD, County Clerk  
*John Smith* Deputy

Performed Under Contract Number DACW-56-71-C-0109  
 SEC 7 T 19N R 19E COUNTY MAYES

*Eugene R. Janway*



Course No.	Distance	Bearing	Course No.	Distance	Bearing
1	1157.993'	S 0°42'47" W	14	165.771'	S 88°18'46" E
2	331.809'	N 88°19'53" W	15	661.674'	N 0°42'10" E
3	165.421'	S 0°42'21" W	16	497.436'	S 88°19' 6" E
4	995.364'	N 88°19'46" W	17	1323.440'	S 0°42'49" W
5	1323.182'	S 0°41' 4" W	18	1325.840'	S 88°18'25" E
6	346.387'	N 88°19' 8" W	19	2647.363'	N 0°44'31" E
7	661.551'	S 0°44'45" W	20	663.575'	S 88°19'46" E
8	1041.270'	N 88°18'48" W	21	661.902'	N 0°45'22" E
9	330.736'	N 0°55'42" E	22	663.740'	N 88°20' 6" W
10	645.251'	S 88°17'55" E	23	661.839'	N 0°44'31" E
11	992.328'	N 0°44'45" E	8A	72.75'	N 88°17'46" W
12	1010.713'	S 88°18'26" E	9A	72.75'	S 88°17'55" E
13	661.659'	N 0°41'58" E			

Field Book No. 5-1830 Date April, 1971

CERTIFICATE OF SURVEY

I HEREBY CERTIFY THAT THE ABOVE PLAT IS A TRUE AND CORRECT REPRESENTATION OF THE SURVEY MADE IN SECTION 7, T 19N, R 19E, MAYES COUNTY, OKLA.

HOLWAY ENGINEERS INC.

Under the Supervision of  
 U.S. ARMY ENGINEER DISTRICT, TULSA  
 CORPS OF ENGINEERS

LEGEND

- ▲ MONUMENT
- ORIGINAL CORNER
- IRON PIN

*Janway*  
 REGISTERED LAND SURVEYOR NO. 218

812188  
 581  
 109  
 45