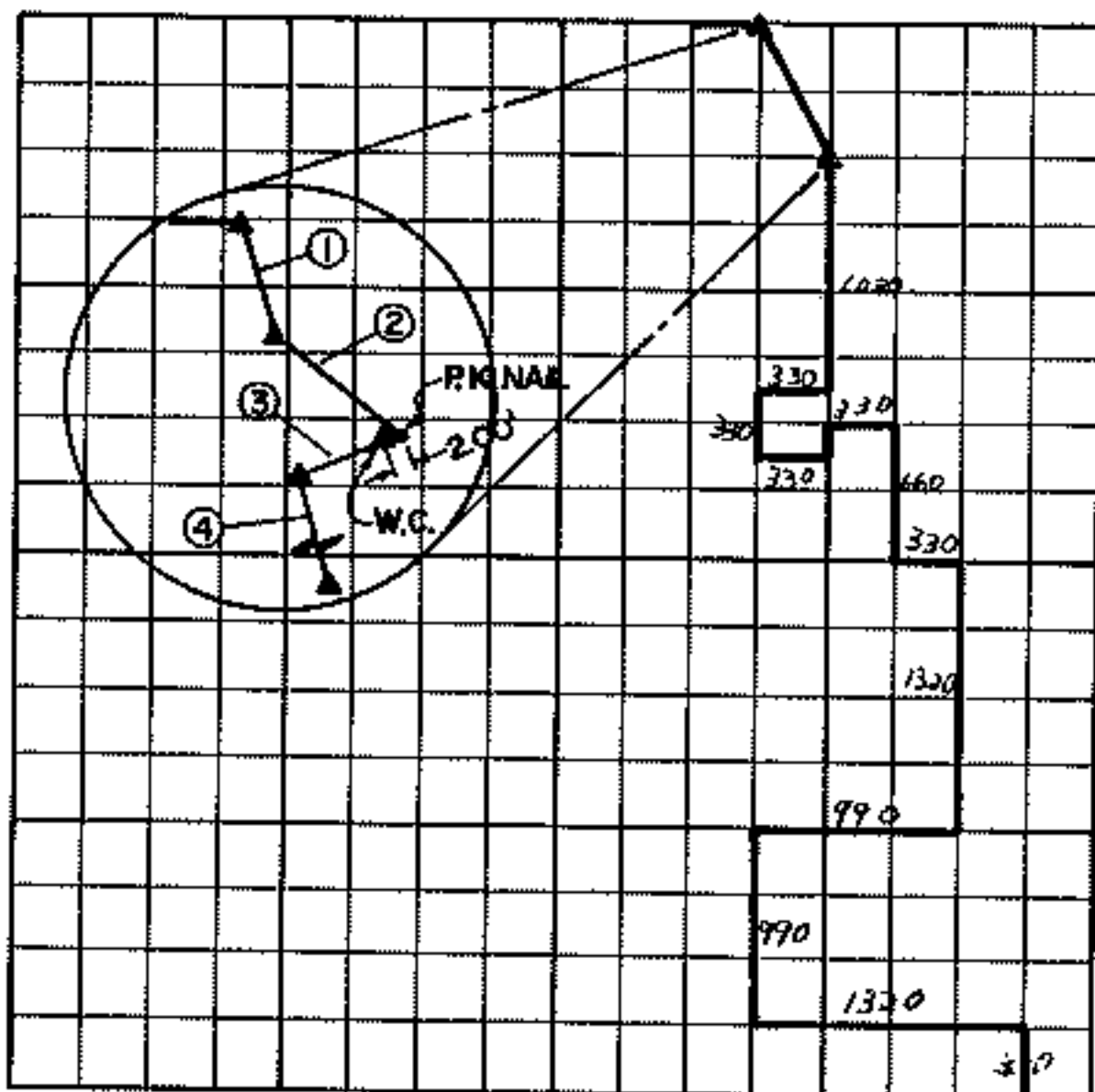


PARTIAL BOUNDARY SURVEYS
**FORT GIBSON LAKE,
 OKLAHOMA**

SECTION 8, T19N, R19E MAYES COUNTY



Course No.	Distance	Bearing	Course No.	Distance	Bearing
1	150.00	S 26° 20' 42" E			
2	111.07	S 50° 15' 44" E			
3	47.00	S 47° 00' 00" W			
4	478.57	S 26° 20' 42" E			
			REVISIONS IN NE $\frac{1}{4}$ NW $\frac{1}{4}$ NE $\frac{1}{4}$ MADE IN SEPT. 1982 BY ENTZ ENGINEERING & ASSOCIATES.		