

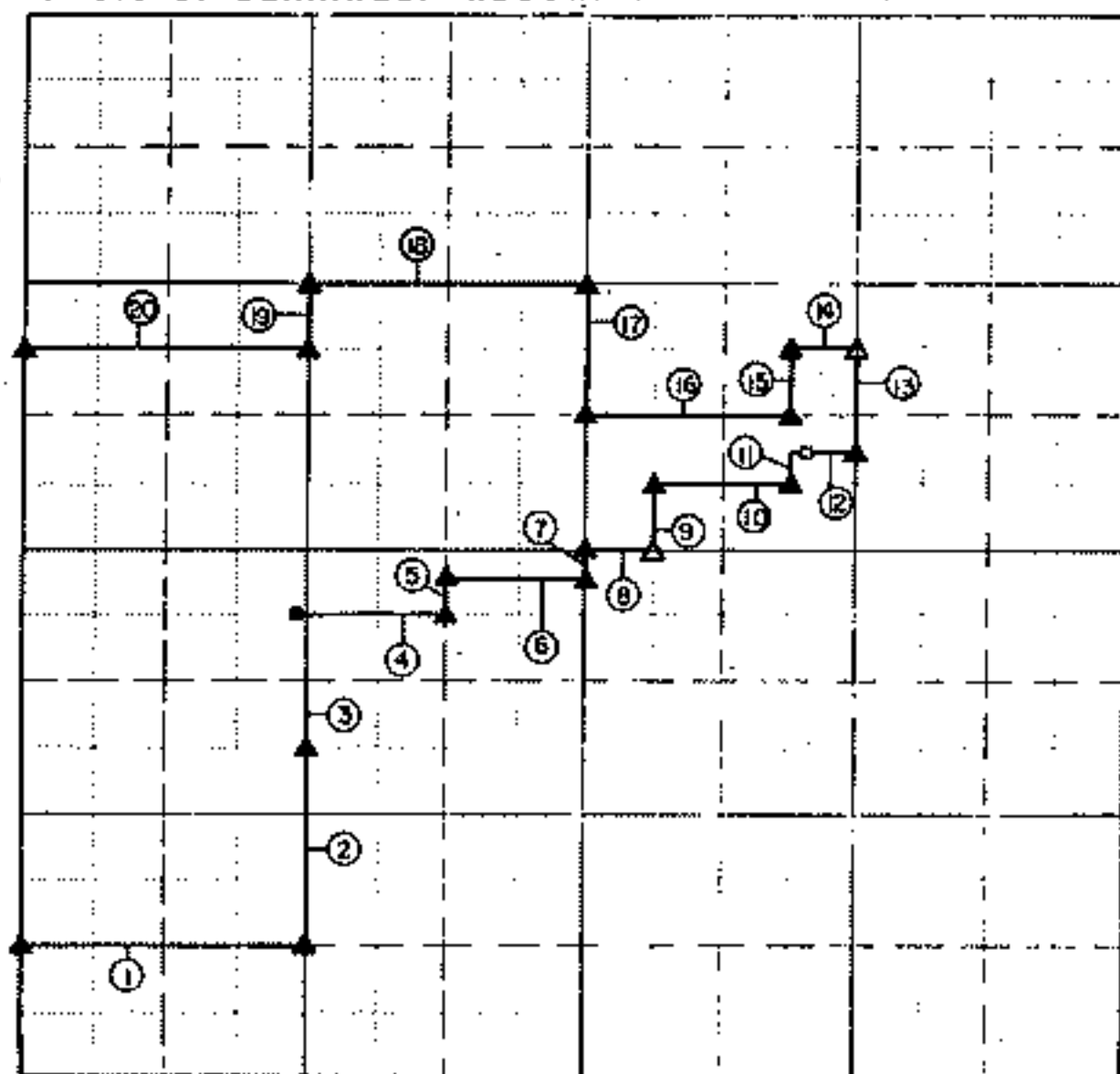
RETRACEMENT SURVEY PLAT

LAKE FORT GIBSON, OKLAHOMA

PERFORMED UNDER CONTRACT NUMBER DACA56-85-D-0078

SEC. 17, T19 NORTH, R 20 EAST COUNTY MAYES

· BASIS OF BEARINGS: RECORD BEARING OF COURSE 20



Course No	Distance	Bearing	Course No	Distance	Bearing
1	1322.50	S 89°43'04"E	14	330.69	N 89°44'34"W
2	990.48	N 00°08'23"W	15	329.59	S 00°08'10"E
3	661.14	N 00°00'08"W	16	991.82	N 89°45'25"W
4	661.78	S 89°42'40"E	17	660.43	N 00°34'41"E
5	184.97	N 00°02'41"W	18	1322.00	N 89°47'58"W
6	661.60	N 89°11'48"E	19	330.16	S 00°07'14"E
7	152.06	N 00°02'15"W	20	1322.76	N 89°47'47"W
8	330.83	S 89°43'40"E			
9	330.14	N 00°07'17"W			
10	661.60	S 89°49'09"E			
11	165.03	N 00°26'29"W			
12	330.78	S 89°40'50"E			
13	493.84	N 00°07'24"W			

Field Book No 5-1912

Date AUGUST, 1985

CRAFTON, TULL, SPANN & YOE, INC.

under the supervision of
U.S. ARMY ENGINEER DISTRICT

ENGINEER CORPS OF ENGINEERS

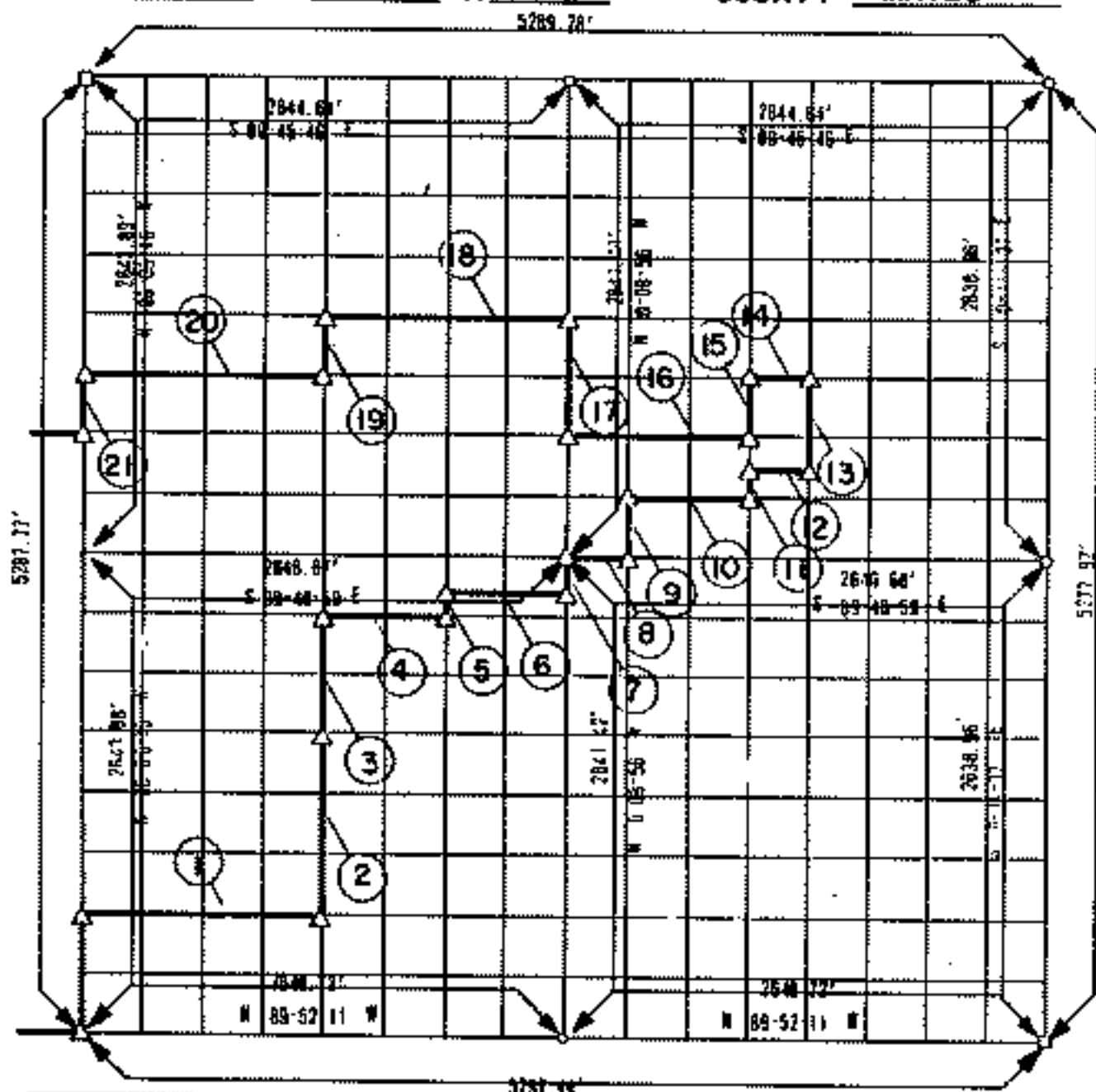
LEGEND

- △ SET MONUMENT
- ▲ FOUND MONUMENT
- SET REF. MONUMENT
- FOUND REF. MONUMENT

**PARTIAL BOUNDARY SURVEYS
FT. GIBSON RESERVOIR
GRAND RIVER, OKLAHOMA**

Performed Under Contract Number **DACW56-70-C-0108**

SEC 17 T 19-N R 20-E COUNTY MAYES



Course No.	Distance	Bearing	Course No.	Distance	Bearing
1	1324.10'	S 00-51-23 E	14	330.34'	N 89-27-27 W
2	991.85'	N 0-07-36 W	15	330.06'	S 0-00-57 E
3	861.11'	N 0-07-36 W	16	992.31'	N 89-48-11 W
4	881.73'	S 89-48-23 E	17	860.26'	N 0-08-56 W
5	165.12'	N 0-00-16 W	18	1322.83'	N 00-47-23 W
6	661.78'	S 89-49-11 E	19	330.13'	S 0-07-36 E
7	165.08'	N 0-00-58 W	20	1322.86'	N 00-47-23 W
8	339.83'	S 89-48-58 E	21	330.49'	S 0-08-16 E
9	330.14'	N 0-00-16 W			
10	861.81'	S 89-48-35 E			
11	165.83'	N 0-00-57 W			
12	330.78'	S 89-48-23 E			
13	495.83'	N 0-10-12 W			

CERTIFICATE OF SURVEY Field Book No. 5-1812 Date SEPT. 1970

I HEREBY CERTIFY THAT THE ABOVE PLAT IS A TRUE AND CORRECT REPRESENTATION OF THE SURVEY MADE IN SECTION 17, T. 19-N, R. 20-E, MAYES COUNTY, OKLAHOMA.

ARKANSAS BASH SURVEYORS INC.

Under the Supervision of

**U.S. ARMY ENGINEER DISTRICT, TULSA
CORPS OF ENGINEERS**

LEGEND

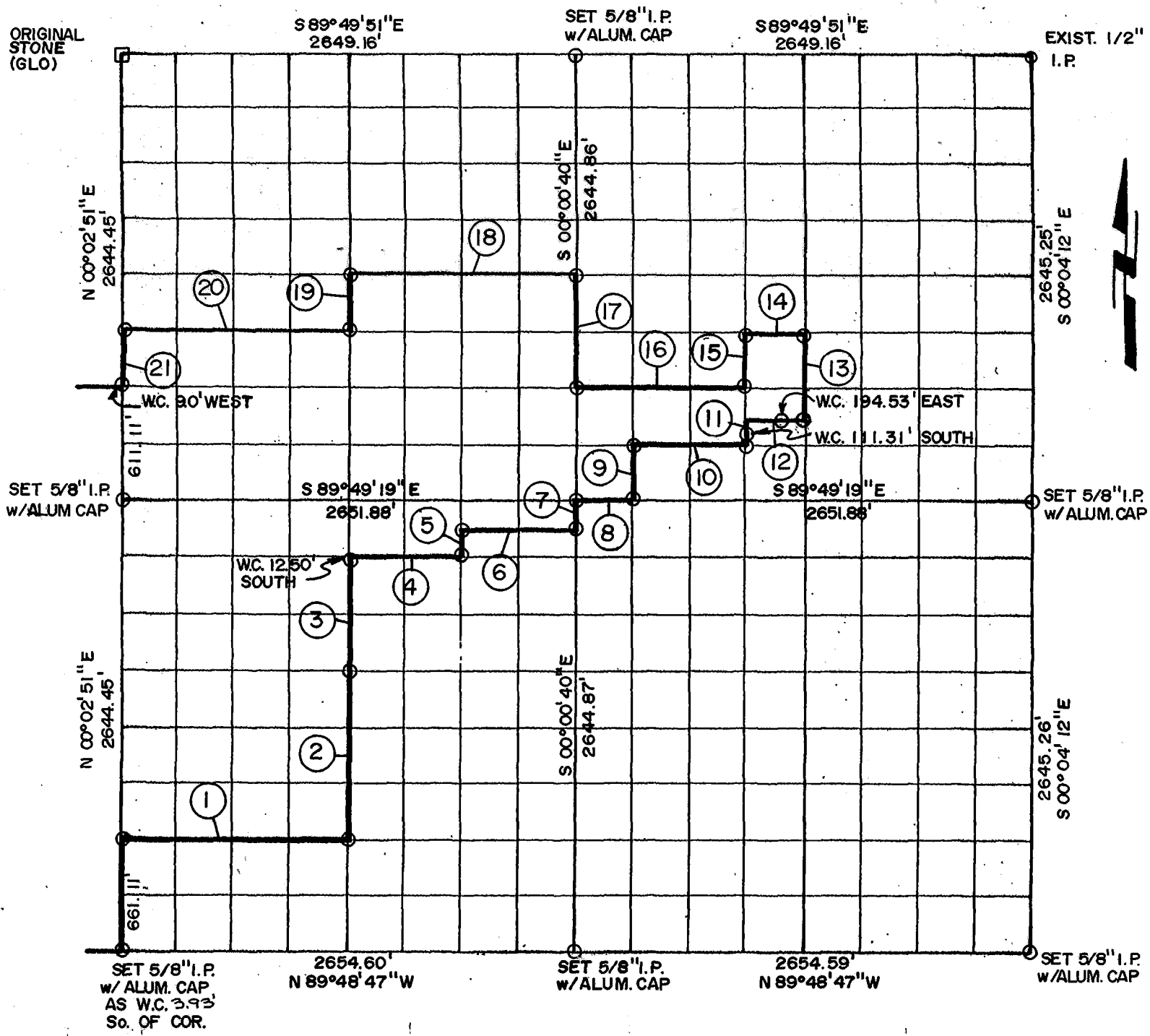
- ▲ MONUMENT
- ORIGINAL CORNER
- IRON PIN

Handwritten signature

PARTIAL BOUNDARY SURVEYS
 FT. GIBSON DAM & RESERVOIR
 LAKE FT. GIBSON, OKLA.

Performed Under Contract Number DACA56-88-D-0050

SEC. 17, T 19 N, R 20 E, COUNTY MAYES



Crs.	Bearing	Distance	Crs.	Bearing	Distance
1	S 89 49 55" E	1326.96	16	N 89 49 27" W	994.20
2	N 00 01 05" E	991.75	17	N 00 00 40" W	661.22
3	N 00 01 05" E	661.16	18	N 89 49 35" W	1325.26
4	S 89 49 18" E	663.06	19	S 00 01 05" W	330.56
5	N 00 00 12" E	165.30	20	N 89 49 31" W	1325.43
6	S 89 49 17" E	663.01	21	S 00 02 51" W	330.56
7	N 00 00 40" W	165.30			
8	S 89 49 19" E	331.48			
9	N 00 01 07" W	330.61			
10	S 89 49 23" E	662.89			
11	N 00 02 00" W	165.31			
12	S 89 49 25" E	331.42			
13	N 00 02 26" W	495.95			
14	N 89 49 31" W	331.36			
15	S 00 02 00" E	330.63			

Field Book No. 5-2034-5-2036 Date JULY, 1989

CERTIFICATE OF SURVEY
 I Hereby Certify That The
 Above Plat is a True and Correct
 Representation of the
 Boundary Survey Made in Sec. 17,
 T.19 N., R.20 E.

**ENTZ ENGINEERING & ASSOCIATES INC. AND
 HUFFMAN SURVEYING CO., INC.**

A Joint Venture
 for

**U.S. ARMY ENGINEER DISTRICT, TULSA
 CORPS OF ENGINEERS**

- △ MONUMENT
- ORIGINAL CORNER
- IRON PIN w/ CAP

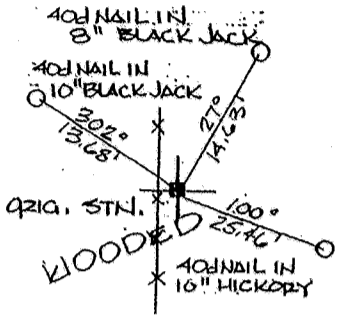
Bob Huffman
 Bob Huffman L.S. 1020

PARTIAL BOUNDARY SURVEYS
 FT. GIBSON DAM & RESERVOIR
 LAKE FT. GIBSON, OKLA.

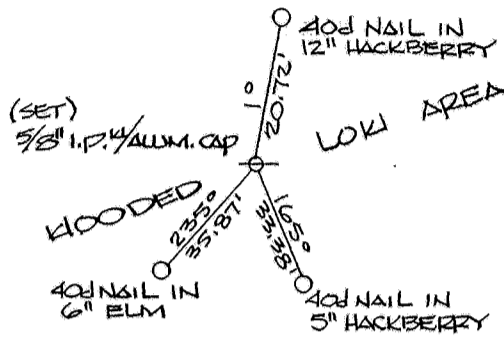
Performed Under Contract Number DACA56-88-D-0050

SEC. 17, T 19 N, R 20 E, COUNTY MAYES

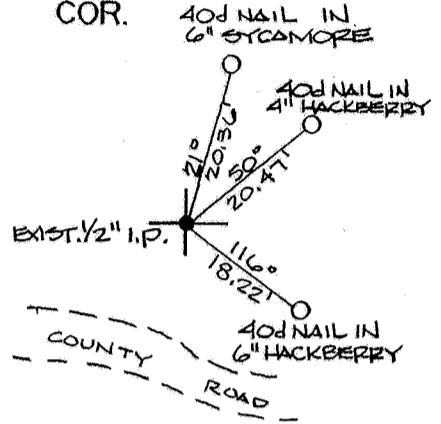
N.W. SECTION COR.



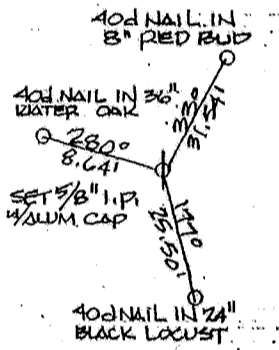
N 1/4 COR.



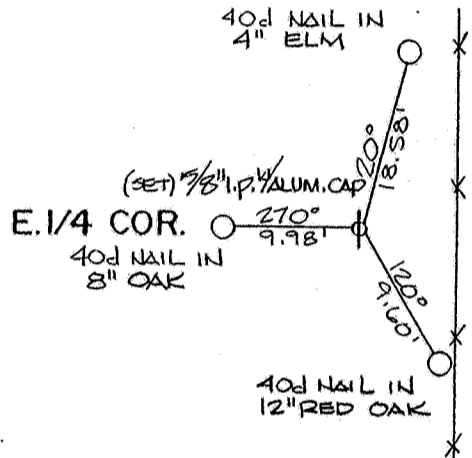
N.E. SECTION COR.



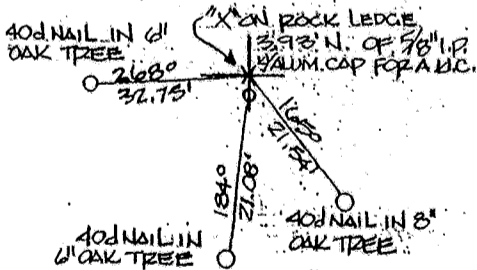
W. 1/4 COR.



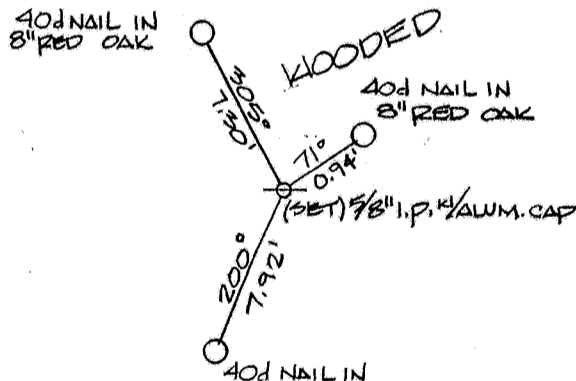
E. 1/4 COR.



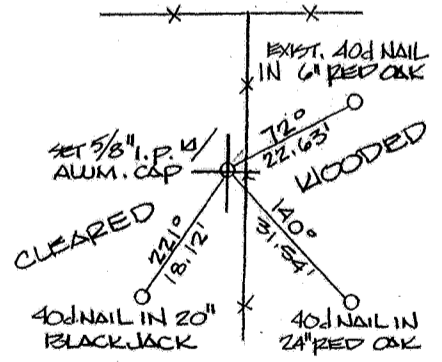
S.W. SECTION COR.



S. 1/4 COR.



S.E. SECTION COR.



Field Book No. 5-2034 - 5-2036 Date JULY, 1989

ENTZ ENGINEERING & ASSOCIATES INC. AND
 HUFFMAN SURVEYING CO., INC.

A Joint Venture
 for

U.S. ARMY ENGINEER DISTRICT, TULSA
 CORPS OF ENGINEERS

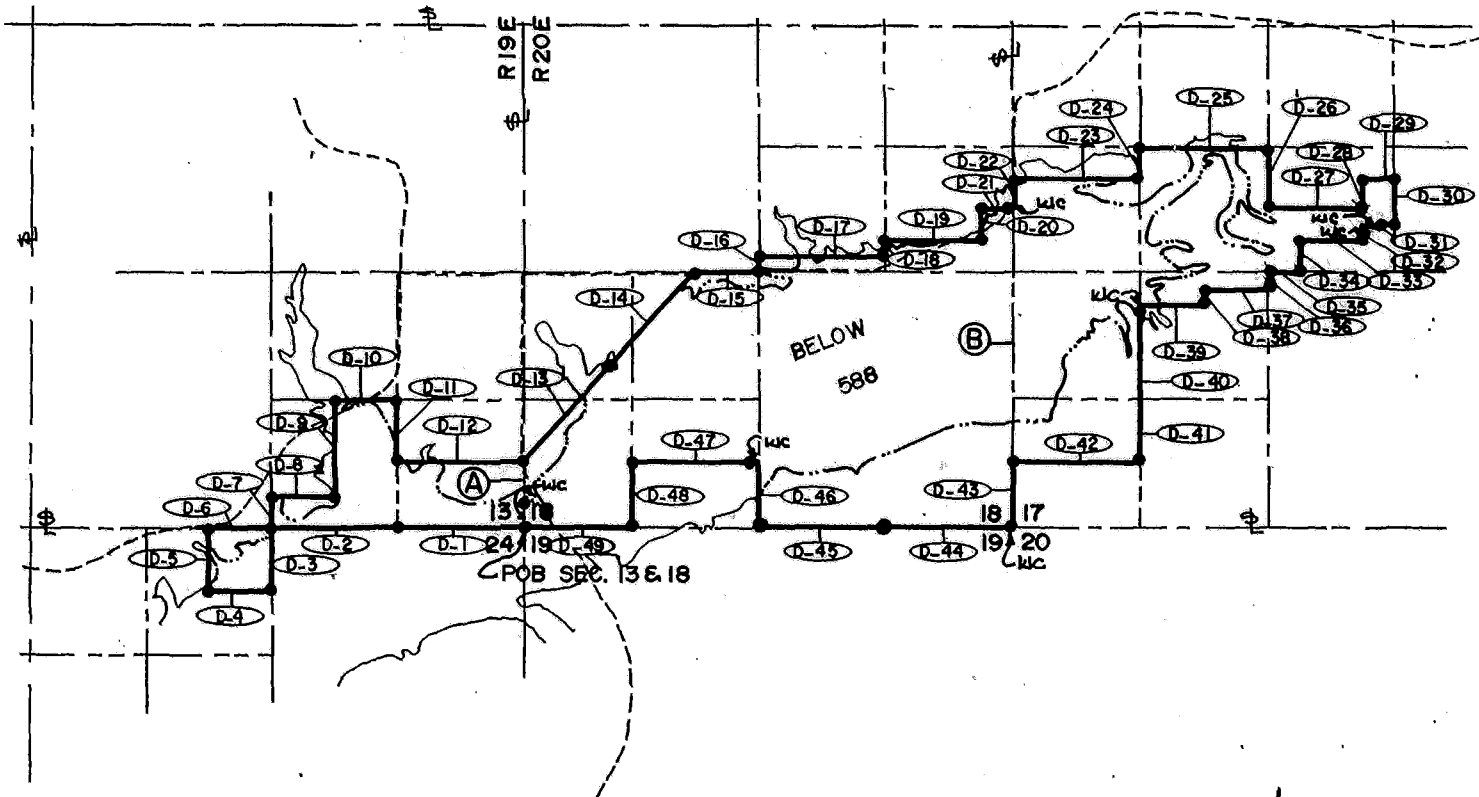
- ▲ MONUMENT
- ORIGINAL CORNER
- IRON PIN

Ron Huffman
 Ron Huffman, LS 1026

**DISPOSAL TRACT SURVEY PLAT
FT. GIBSON DAM & RESERVOIR
LAKE FT. GIBSON, OKLA.**

SEC. 13824
17&18, T 19 N, R 20 E, COUNTY MAYES

PARCEL NO. 31 Performed Under Contract No. DACA56-88-D-0050

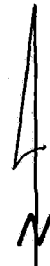


○ D-12 DISPOSAL BOUNDARY COURSE

FLOWAGE EASEMENT = 313.866 AC. (BELOW 588 ELEV.)

TOTAL AREA = 473.234 AC.

● 5/8" I.P. w/ ALUM. CAP ATOP



SCALE 1" = 2000'

Course No.	Distance	Bearing	Course No.	Distance	Bearing
D-1	1319.85	S 89°52'16" W	D-14	1333.73	N 42°10'25" E
D-2	1319.85	S 89°52'16" W	D-15	660.78	S 89°47'40" E
D-3	659.88	S 00°04'43" E	D-16	165.28	N 00°03'40" W
D-4	660.05	S 89°53'52" W	D-17	1321.72	S 89°47'40" E
D-5	659.57	N 00°04'06" W	D-18	165.28	N 00°00'24" W
D-6	659.93	N 89°52'16" E	D-19	991.41	S 89°47'40" E
D-7	330.60	N 00°00'46" E	D-20	330.56	N 00°02'02" E
D-8	659.78	N 89°52'19" E	D-21	330.55	S 89°47'41" E
D-9	991.76	N 00°00'47" W	D-22	330.56	N 00°02'51" E
D-10	659.33	N 89°52'29" E	D-23	1325.43	S 89°49'31" E
D-11	661.15	S 00°02'19" E	D-24	330.58	N 00°01'05" E
D-12	1319.26	N 89°52'23" E	D-25	1325.26	S 89°49'31" E
D-13	1333.73	N 42°10'25" E	D-26	661.22	S 00°00'40" E

Field Book No. 5-2035 ⁵⁻²⁰³⁴ 5-2036 Date JULY 1989

CERTIFICATE OF SURVEY ENTZ ENGINEERING & ASSOCIATES INC. AND
HUFFMAN SURVEYING CO., INC.

I Herby Certify That The
Above Plat is a True and Correct
Representation of the Survey
Made in Sec. 13, T 19 N, R 20 E.

A Joint Venture
for

U.S. ARMY ENGINEER DISTRICT, TULSA
CORPS OF ENGINEERS

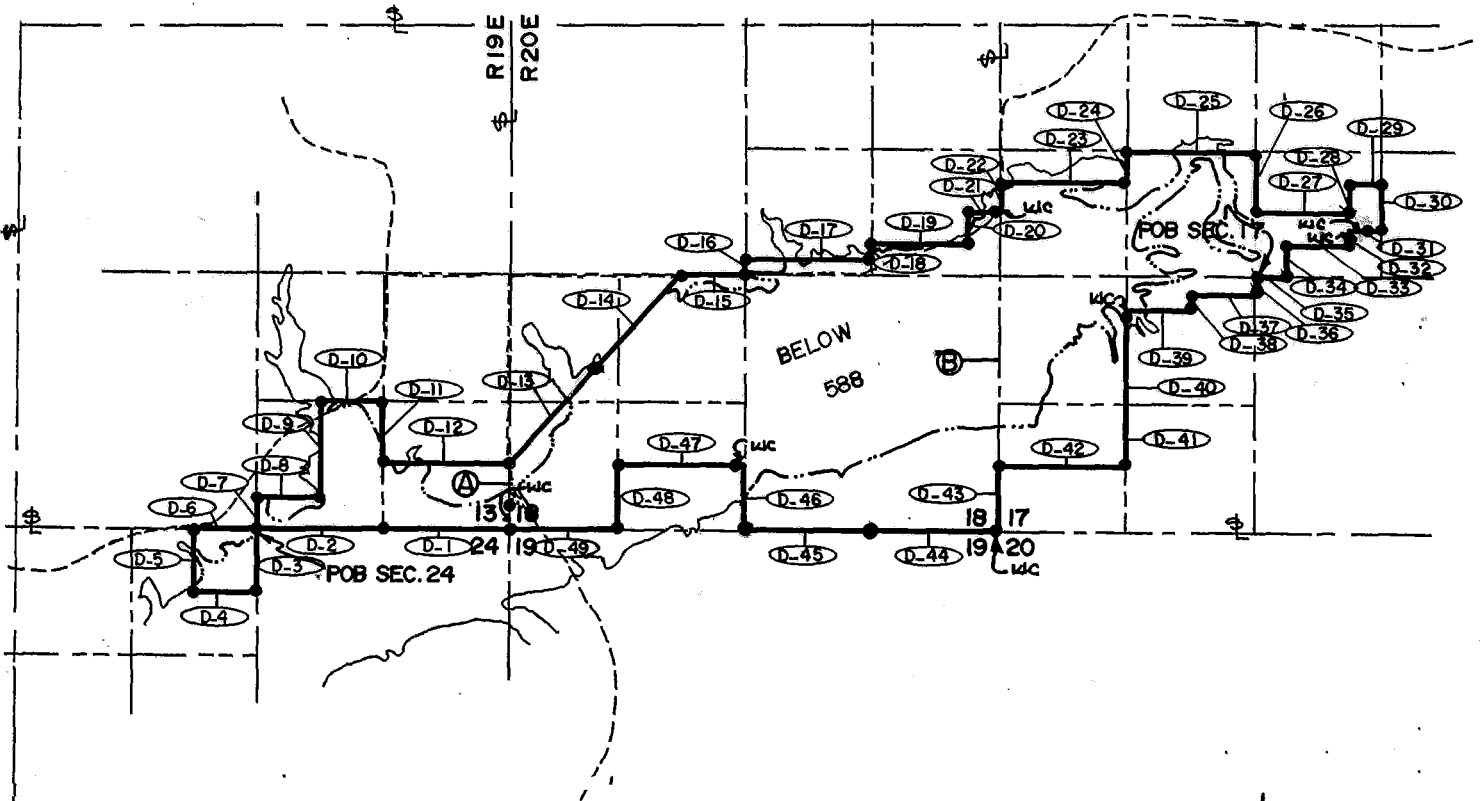
— LEGEND —

- △ MONUMENT
- ORIGINAL CORNER
- IRON PIN W/ CAP

Ron Huffman
Ron Huffman L.S. 1020

**DISPOSAL TRACT SURVEY PLAT
FT. GIBSON DAM & RESERVOIR
LAKE FT. GIBSON, OKLA.**

SEC. ¹³⁸²⁴~~17818~~, T 19 N, R ¹⁹~~20~~ E, COUNTY MAYES
PARCEL NO. 31 Performed Under Contract No. DACA56-88-D-0050



○ D-12 DISPOSAL BOUNDARY COURSE

FLOWAGE EASEMENT = 313.866 AC. (BELOW 588 ELEV.)

TOTAL AREA = 473.234 AC.

● 5/8" I.P. w/ ALUM. CAP ATOP

SCALE 1" = 2000'

Course No.	Distance	Bearing	Course No.	Distance	Bearing
D-27	994.20	S89°49'27"E	D-40	661.16	S00°01'05"W
D-28	330.63	N00°02'00"W	D-41	991.75	S00°01'05"W
D-29	331.36	S89°49'31"E	D-42	1326.96	N89°48'55"W
D-30	495.95	S00°02'26"E	D-43	661.11	S00°02'51"W
D-31	331.42	N89°49'25"W	D-44	1319.05	N89°47'38"W
D-32	165.31	S00°02'00"E	D-45	1319.05	N89°47'38"W
D-33	662.89	N89°49'23"W	D-46	661.11	N00°03'40"W
D-34	330.61	S00°01'07"E	D-47	1319.68	N89°47'39"W
D-35	331.48	N89°49'19"W	D-48	661.11	S00°06'55"E
D-36	165.30	S00°00'40"E	D-49	1134.39	N89°47'38"W
D-37	663.01	N89°49'17"W	A	661.11	S00°05'25"E
D-38	165.30	S00°00'12"W	B	2644.45	S00°02'51"W
D-39	663.05	N89°49'15"W			

Field Book No. 5-2035 5-2036 Date JULY 1989

CERTIFICATE OF SURVEY ENTZ ENGINEERING & ASSOCIATES INC. AND
I Hereby Certify That The HUFFMAN SURVEYING CO., INC.
Above Plat is a True and Correct
Representation of the Survey
Made in Sec. 31, T 19 N, R 20 E.
A Joint Venture
for

U.S. ARMY ENGINEER DISTRICT, TULSA
CORPS OF ENGINEERS

— LEGEND —

△ MONUMENT
□ ORIGINAL CORNER
● IRON PIN w/ CAP

Ron Huffman
Ron Huffman U.S. 1020