

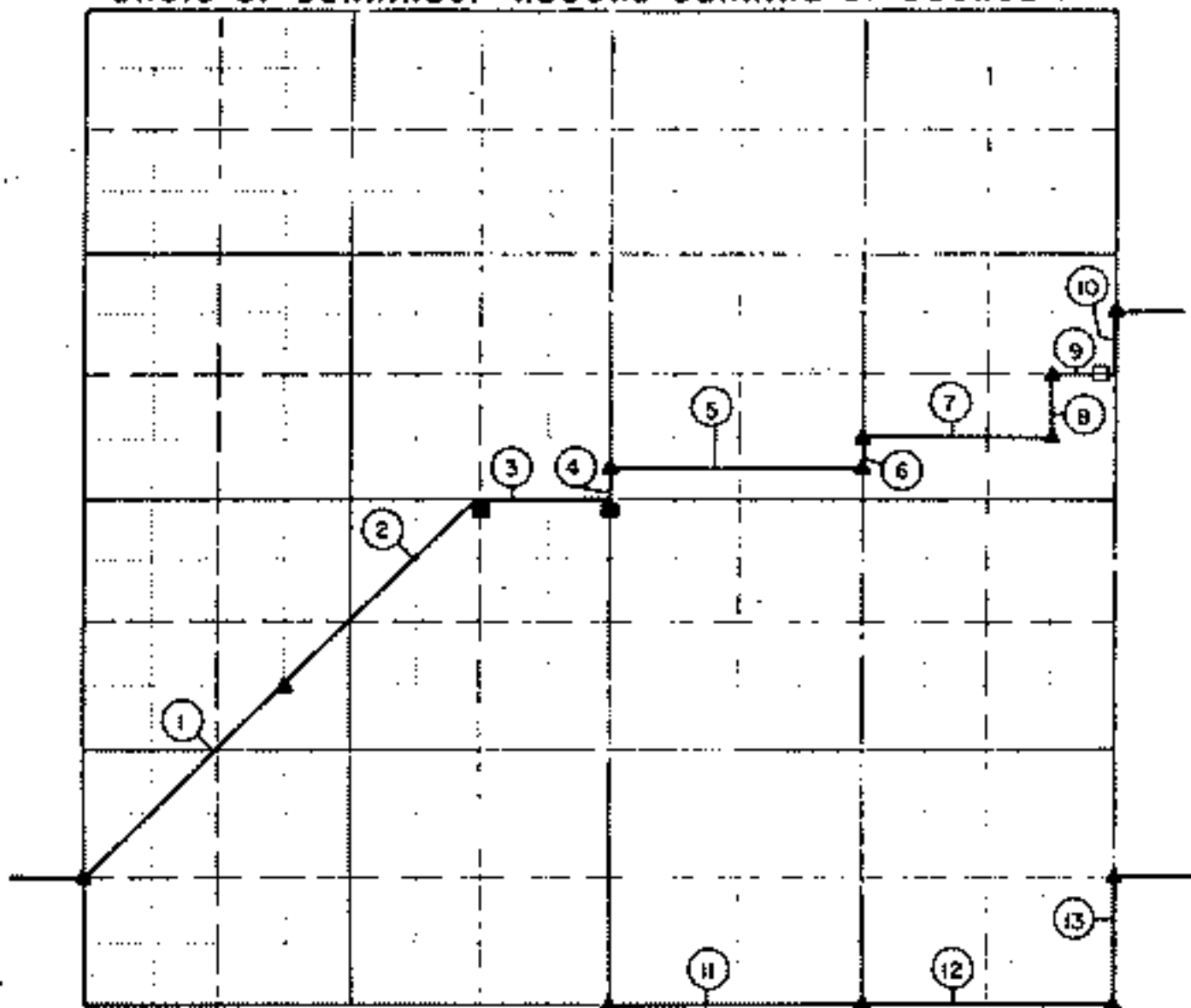
RETRACEMENT SURVEY PLAT

LAKE FORT GIBSON, OKLAHOMA

PERFORMED UNDER CONTRACT NUMBER DACA56-85-D-0078

SEC. 18 , T 19 N , R 20 E COUNTY MAYES

BASIS OF BEARINGS: RECORD BEARING OF COURSE 1



Course No	Distance	Bearing	Course No	Distance	Bearing
1	1342.68'	N42°30'28" E			
2	1307.34'	N42°11'01" E			
3	659.43'	S89°10'21" E			
4	164.98'	N00°23'47" E			
5	1319.07'	S89°10'22" E			
6	165.10'	N00°47'46" E			
7	989.72'	S88°15'14" E			
8	329.97'	N00°08'45" E			
9	329.85'	S89°32'11" E			
10	330.49'	N00°03'05" E			
11	1308.78'	S89°39'04" E			
12	1318.24'	S89°40'13" E			
13	660.96'	N00°03'05" E			

Field Book No 5-1813

Date AUGUST 1986

CRAFTON, TULL, SPANN & YOE, INC.

under the supervision of
U.S. ARMY ENGINEER DISTRICT

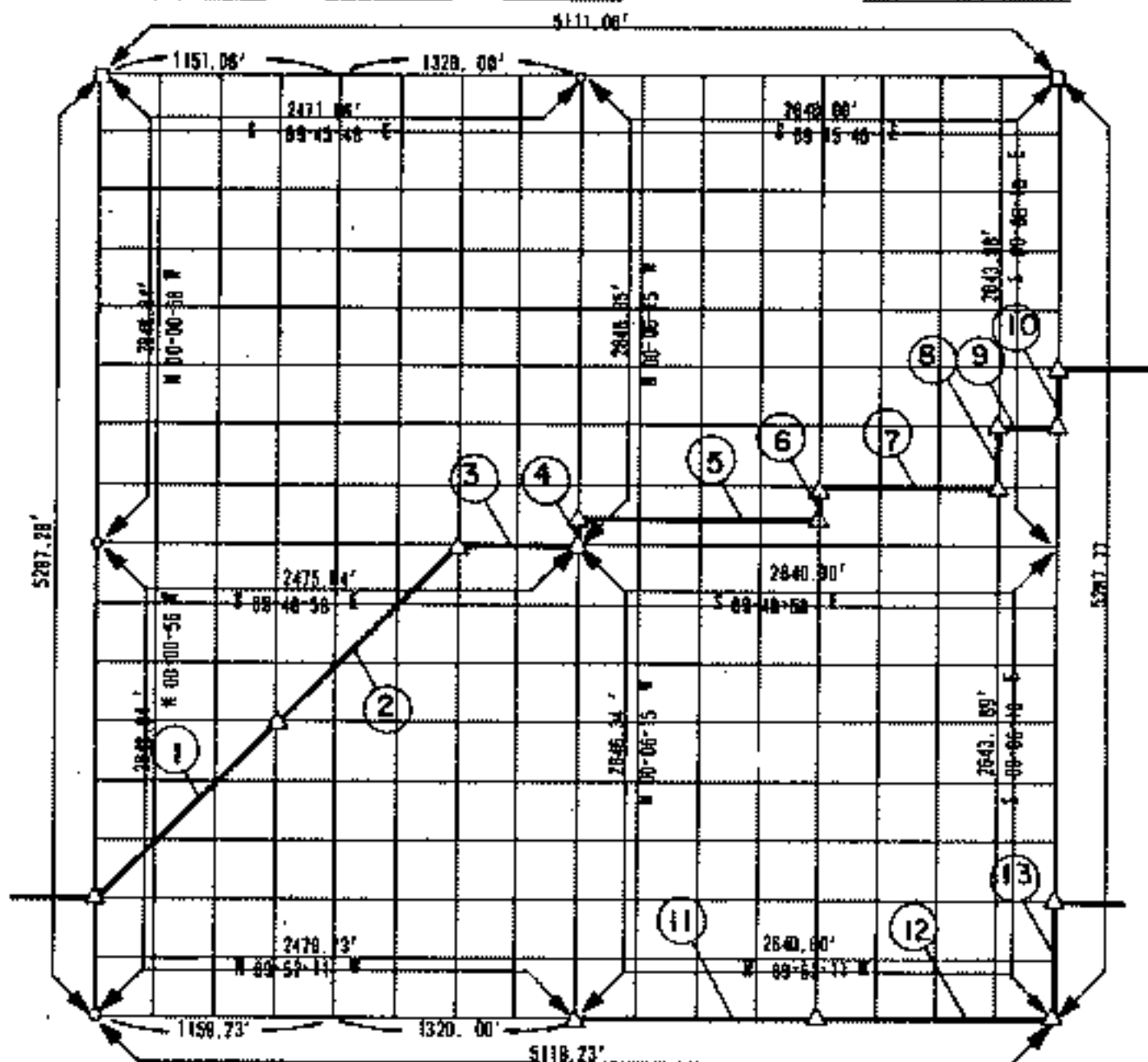
LEGEND

- ▲ SET MONUMENT
- ▲ FOUND MONUMENT
- FOUND REFERENCE MONUMENT

**PARTIAL BOUNDARY SURVEYS
FT. GIBSON RESERVOIR
GRAND RIVER, OKLAHOMA**

Performed Under Contract Number DACW56-70-C-0106

SEC 18 T 19-N R 20-E COUNTY MAYES



Course No.	Distance	Bearing	Course No.	Distance	Bearing
1	1343.40'	N 42-30-28 E			
2	1343.40'	N 42-30-28 E			
3	859.78'	S 09-48-58 E			
4	165.39'	N 0-05-00 E			
5	1319.40'	E 09-48-40 E			
6	165.90'	N 0-05-30 W			
7	860.58'	E 09-48-34 E			
8	330.52'	N 0-06-08 W			
9	329.85'	S 00-00-10 E			
10	330.49'	N 0-08-18 W			
11	1320.00'	N 00-52-11 W			
12	1320.00'	N 00-52-11 W			
13	860.97'	S 0-08-18 E			

CERTIFICATE OF SURVEY Field Book No. 5-1813 Date SEPT. 1970

I HEREBY CERTIFY THAT THE ABOVE PLAT IS A TRUE AND CORRECT REPRESENTATION OF THE SURVEY MADE BY ME IN ACCORDANCE WITH THE ACTS OF CONGRESS AND THE COURTS OF THE STATE OF OKLAHOMA.
Robert J. ...
REGISTERED LAND SURVEYOR

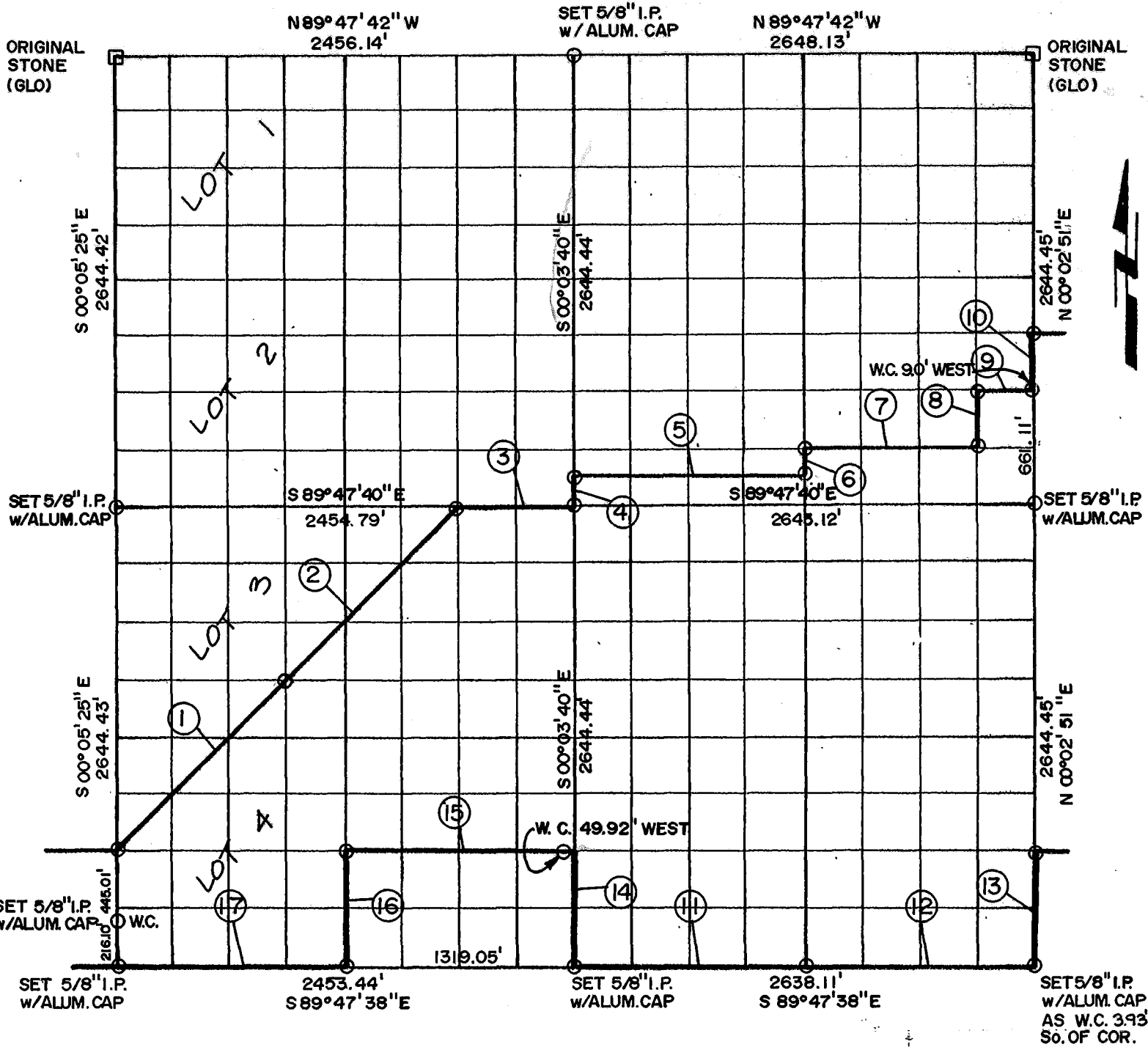
ARKANSAS BASIN SURVEYORS INC.
Under the Supervision of
U.S. ARMY ENGINEER DISTRICT, TULSA
CORPS OF ENGINEERS

LEGEND
 * MONUMENT
 □ ORIGINAL CORNER
 ○ LOW Pk

PARTIAL BOUNDARY SURVEYS
 FT. GIBSON DAM & RESERVOIR
 LAKE FT. GIBSON, OKLA.

Performed Under Contract Number DACA56-88-D-0050

SEC. 18, T 19 N, R 20 E, COUNTY MAYES



Crs.	Bearing	Distance	Crs.	Bearing	Distance
1	N 42° 10' 25" E	1333.73	16	S 00° 06' 55" E	661.11
2	N 42° 10' 25" E	1333.73	17	N 89° 47' 38" W	1134.39
3	S 89° 47' 40" E	660.78			
4	N 00° 03' 40" W	165.28			
5	S 89° 47' 40" E	1321.72			
6	N 00° 00' 24" W	165.28			
7	S 89° 47' 40" E	991.41			
8	N 00° 02' 02" E	330.58			
9	S 89° 47' 41" E	330.58			
10	N 00° 02' 51" E	330.58			
11	S 89° 47' 38" E	1319.05			
12	S 89° 47' 38" E	1319.05			
13	N 00° 02' 51" E	661.11			
14	N 00° 03' 40" W	661.11			
15	N 89° 47' 39" W	1319.68			

Field Book No. 5-2034-5-2036 Date JULY, 1989

CERTIFICATE OF SURVEY

I Herby Certify That The Above Plat is a True and Correct Representation of the Boundary Survey Made in Sec. 18, T 19 N, R 20 E.

**ENTZ ENGINEERING & ASSOCIATES INC. AND
 HUFFMAN SURVEYING CO., INC.**

A Joint Venture
for

**U.S. ARMY ENGINEER DISTRICT, TULSA
 CORPS OF ENGINEERS**

- △ MONUMENT
- ORIGINAL CORNER
- IRON PIN w/ CAP

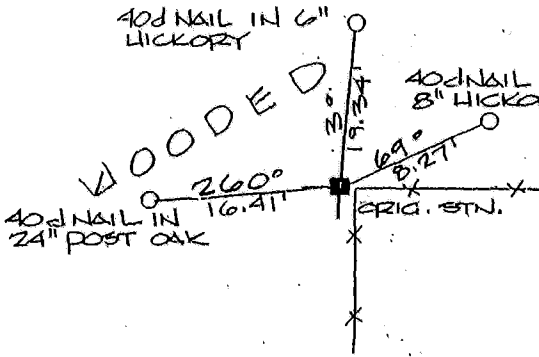
Don Huffman
 Don Huffman L.S. 1020

PARTIAL BOUNDARY SURVEYS
 FT. GIBSON DAM & RESERVOIR
 LAKE FT. GIBSON, OKLA.

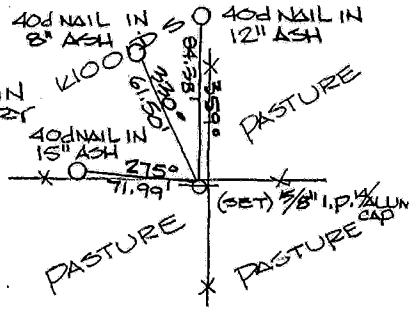
Performed Under Contract Number DACA56-88-D-0050

SEC. 18, T 19 N, R 20 E, COUNTY MAYES

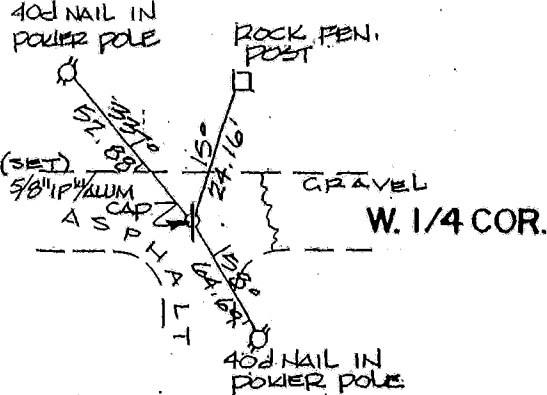
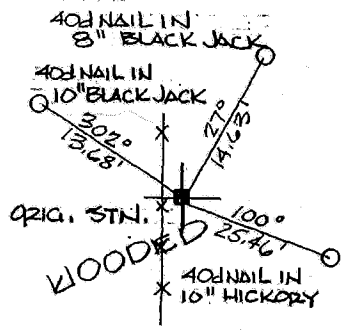
N.W. SECTION COR.



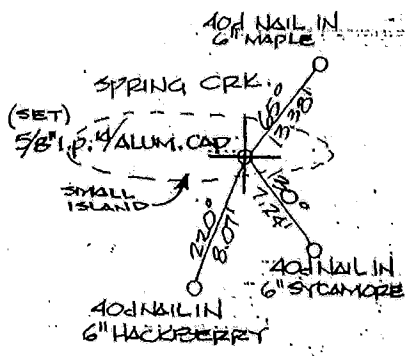
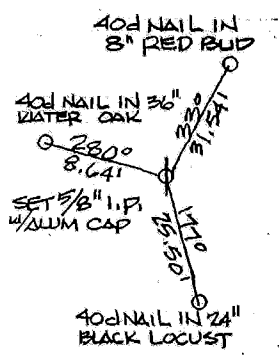
N 1/4 COR.



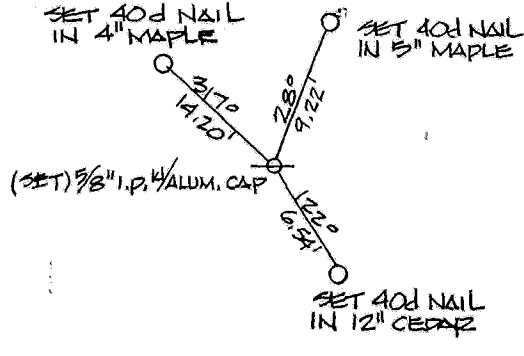
N.E. SECTION COR.



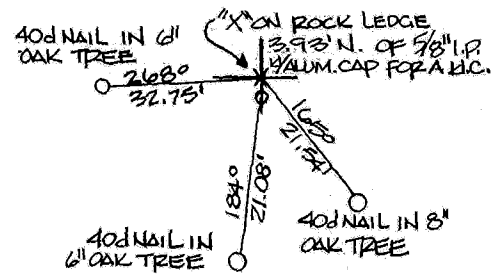
E. 1/4 COR.



S.W. SECTION COR.



S. 1/4 COR.



S.E. SECTION COR.

Field Book No. 5-2034 - 5-2036 Date JULY, 1989
 ENTZ ENGINEERING & ASSOCIATES INC. AND
 HUFFMAN SURVEYING CO., INC.

A Joint Venture
 for

U.S. ARMY ENGINEER DISTRICT, TULSA
 CORPS OF ENGINEERS

- ▲ MONUMENT
- ORIGINAL CORNER
- IRON PIN

Ron Huffman

Ron Huffman, LS 1020