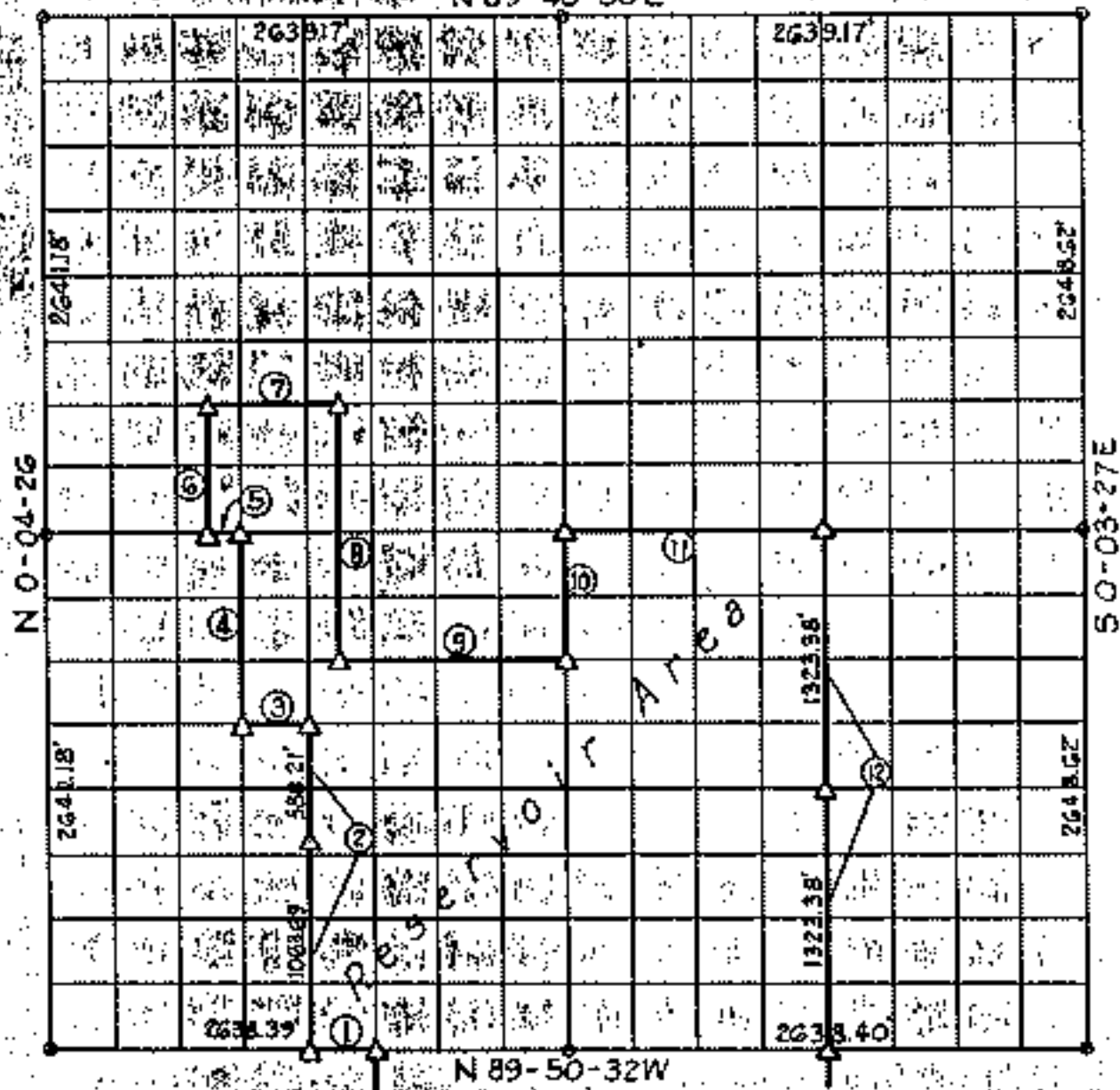


PUBLIC BOUNDARY SURVEYS
 FORT GIBSON LAKE
 AREA I

Performed under Contract Number DACW56-73-C-0230

SEC. 12 T. 20 N. R. 18 E. COUNTY MAYES

N 89-40-50E



Course No.	Distance	Bearing	Course No.	Distance	Bearing
1	329.00	S 09° 50' 32" W	12	2046.76	S 0° 03' 41" E
2	1651.90	N 0° 04' 11" W			
3	329.83	S 89° 47' 31" W			
4	990.96	N 0° 04' 15" W			
5	164.92	S 09° 45' 41" W			
6	660.59	E 0° 04' 17" W			
7	659.72	E 09° 44' 28" E			
8	1321.64	S 0° 04' 09" E			
9	1153.91	E 89° 46' 54" E			
10	660.00	N 0° 03' 56" W			
11	1319.39	E 89° 45' 41" E			

Book No. 5-1862 Date: Oct., 1973

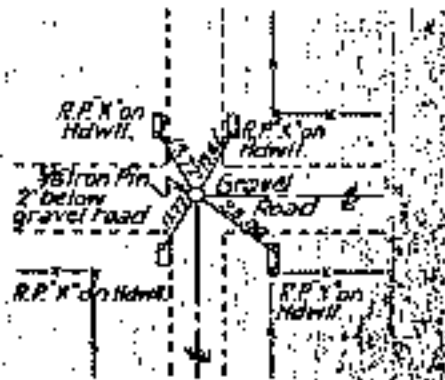
I, Charles J. Finkles, hereby certify that the above plot is a true and correct representation of the survey made in Section 12, T20N, R18E.

- LEGEND
- △ Monument
 - Original Stone
 - Iron Pin
 - ▲ Mon. by O.H.D.

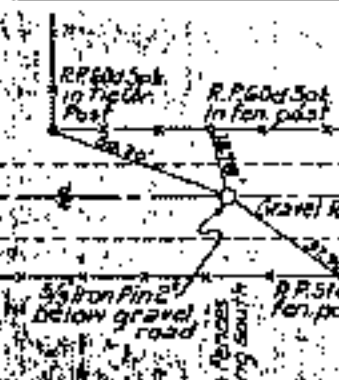
Charles J. Finkles
 Licensed Land Surveyor No. 35

**FORT GIBSON LAKE
 AREA "I"**
**SECTION AND QUARTER SECTION CORNER
 REFERENCES FOR
 SECTION 12, T 20 N, R 18 E, MAYES COUNTY**

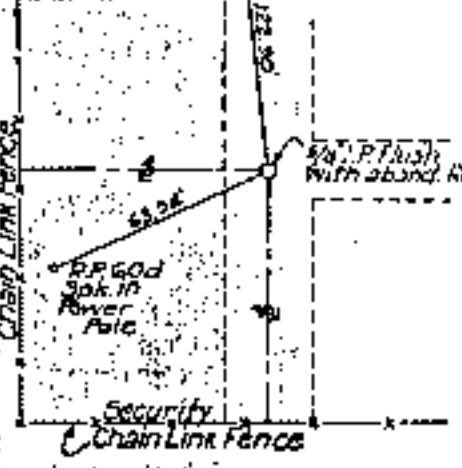
N.W. SECTION CORNER



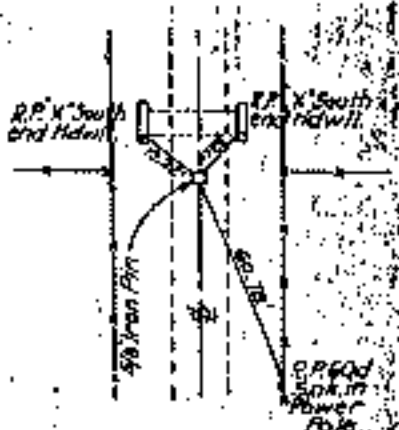
NO. 1/4 CORNER



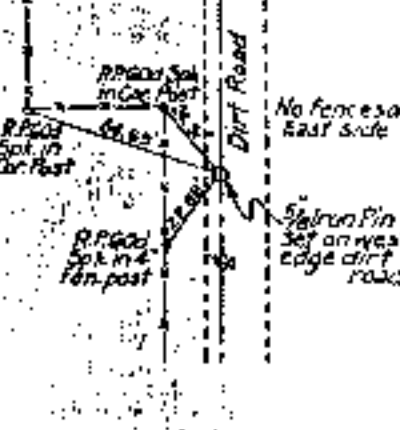
N.E. SECTION CORNER



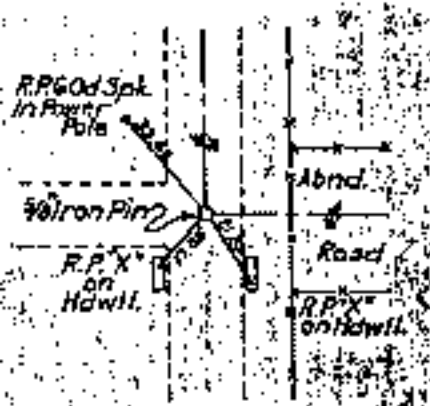
WEST 1/4 CORNER



EAST 1/4 CORNER



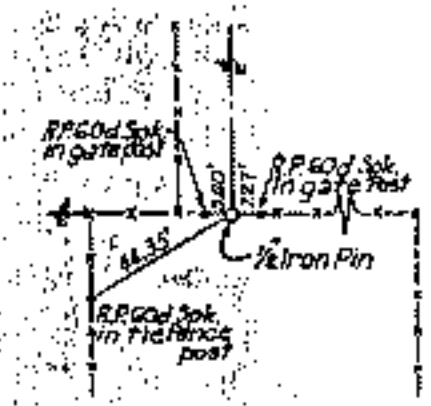
S.W. SECTION CORNER



SO. 1/4 CORNER



S.E. SECTION CORNER



Scale: 1" = 50'
 Date: June - October 1973
 Field Book No. 5-1862