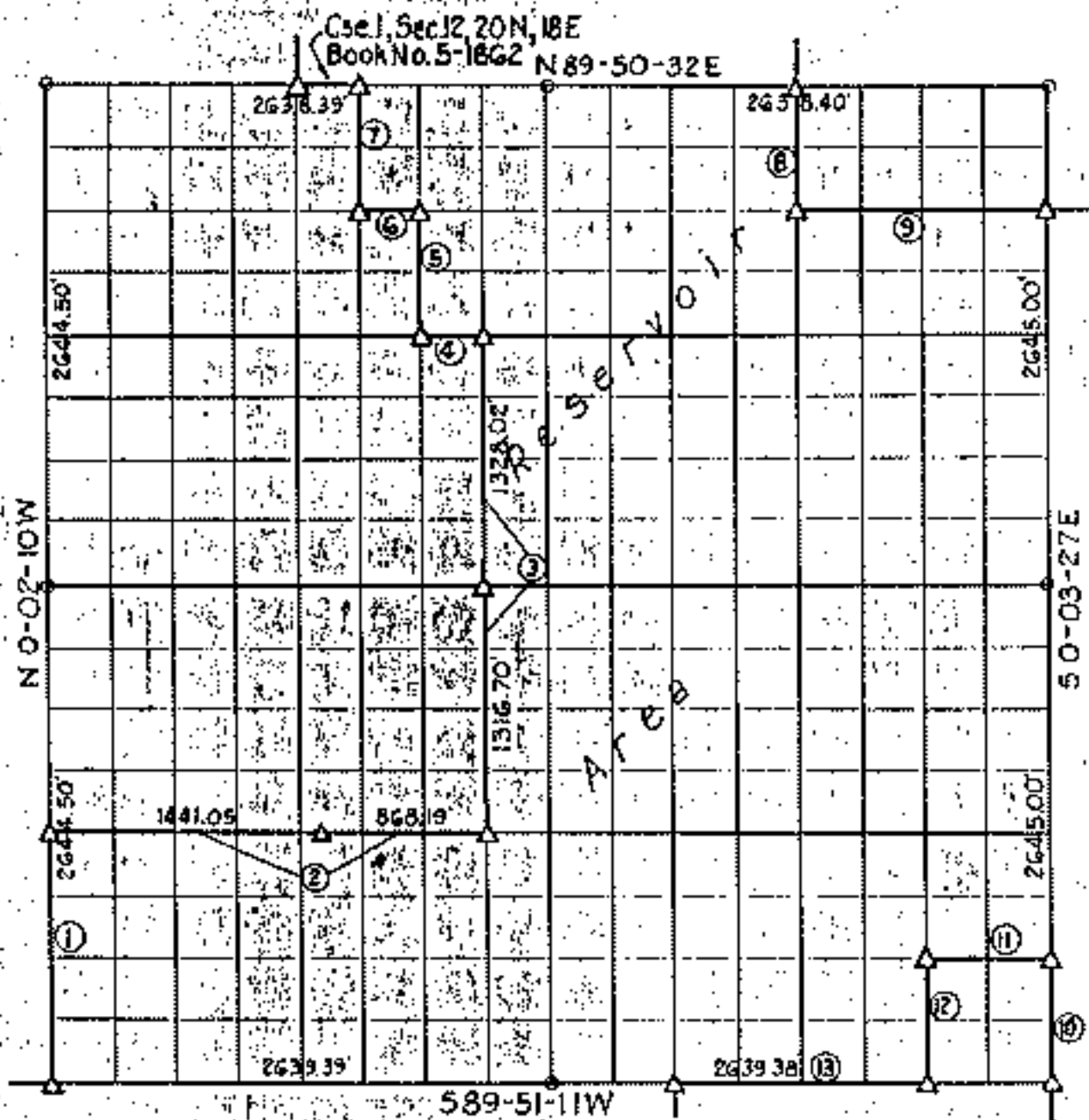


PARTIAL BOUNDARY SURVEYS
 FORT GIBSON LAKE
 AREA I

Performed under Contract Number DACW 56-73-C-0230

SEC. 13 T. 20 N. R. 18 E. COUNTY MAYES



Course No.	Distance	Bearing	Course No.	Distance	Bearing
1	1182.75	N 0° 02' 10" W	11	659.82	S 09° 51' 07" E
2	2307.24	N 09° 51' 02" E	12	661.24	S 0° 03' 17" E
3	2607.72	N 0° 02' 13" W	13	1319.69	S 09° 51' 11" W
4	309.13	S 89° 50' 12" W			
5	661.17	N 0° 02' 36" E			
6	325.55	S 89° 50' 37" W			
7	660.90	N 0° 02' 34" W			
8	661.22	S 0° 03' 07" E			
9	1119.20	N 09° 50' 37" E			
10	661.25	N 0° 03' 27" W			

Book No. 5-1862 Date: October, 1973

I, Charles J. Winkles, hereby certify that the above plat is a true and correct representation of the survey made in Section 13, T20N, R18E.

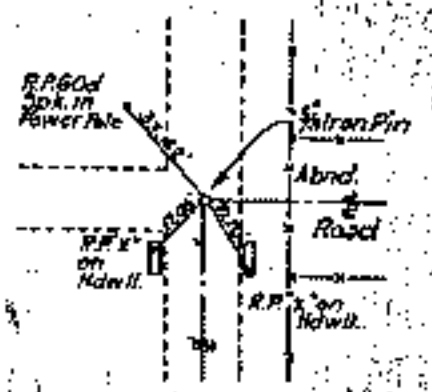
LEGEND

- △ Monument
- Original Stone
- Iron Pin
- ▲ Mon. by O.H.D.

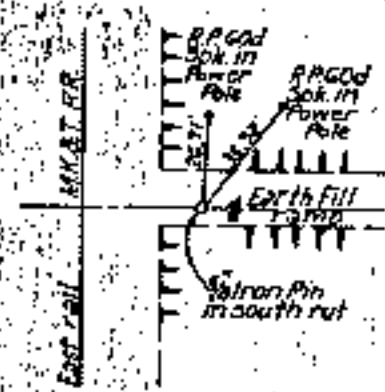
Charles J. Winkles
 Registered Land Surveyor No. 35

**FORT GIBSON LAKE
AREA "I"
SECTION AND QUARTER SECTION CORNER
REFERENCES FOR
SEC. 13, T. 20 N, R. 18 E, MAYES COUNTY**

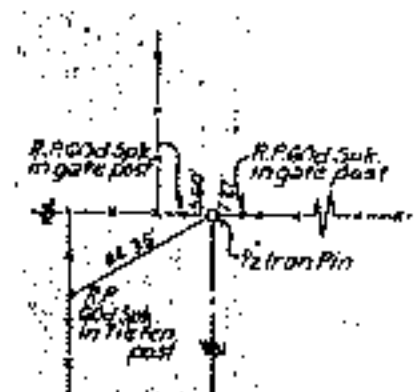
N.W. SECTION CORNER



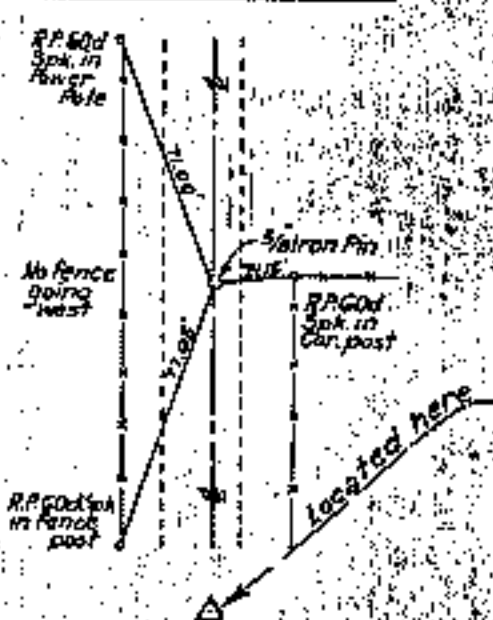
NO. 1/4 CORNER



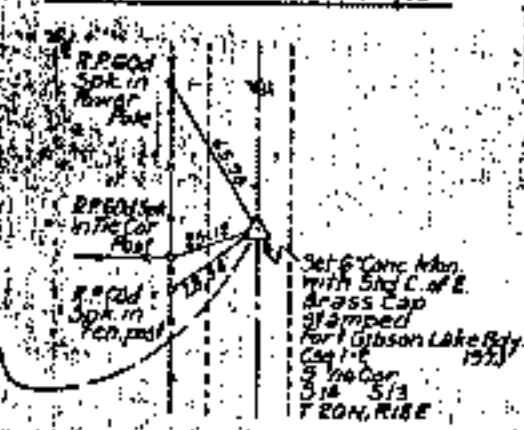
N.E. SECTION CORNER



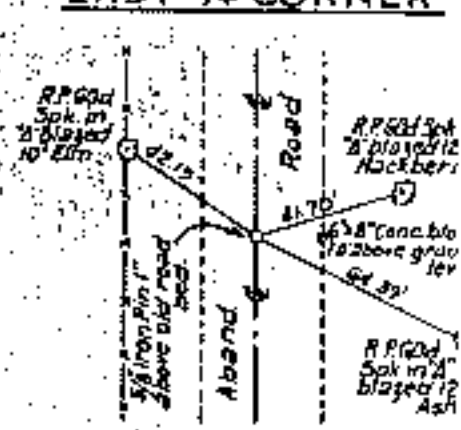
WEST 1/4 CORNER



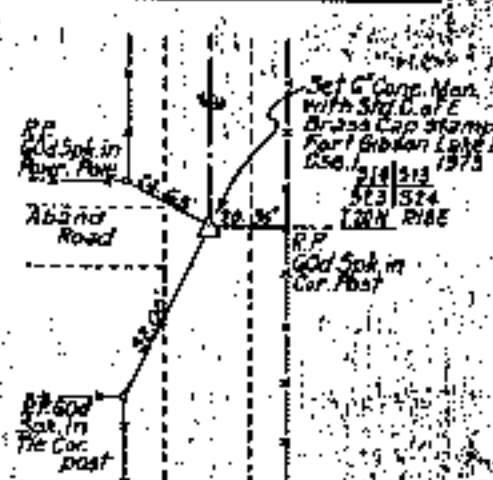
SO. 1/16 CORNER 14|13



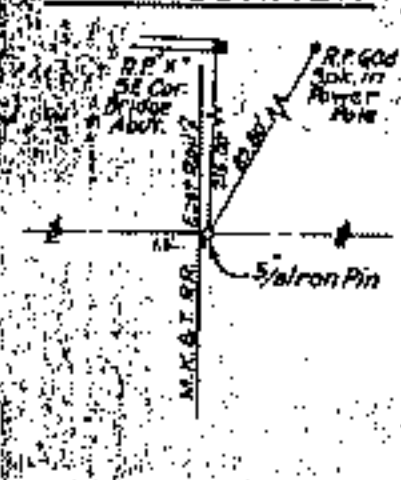
EAST 1/4 CORNER



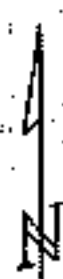
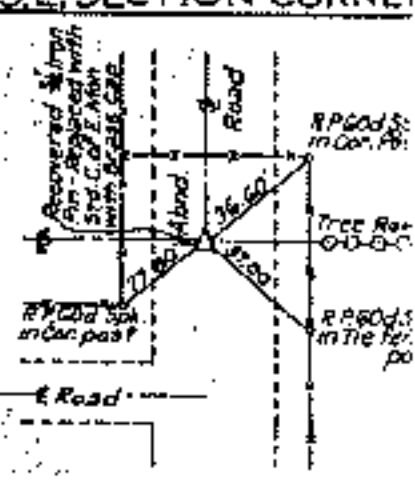
S.W. SECTION CORNER



SO. 1/4 CORNER



S.E. SECTION CORNER

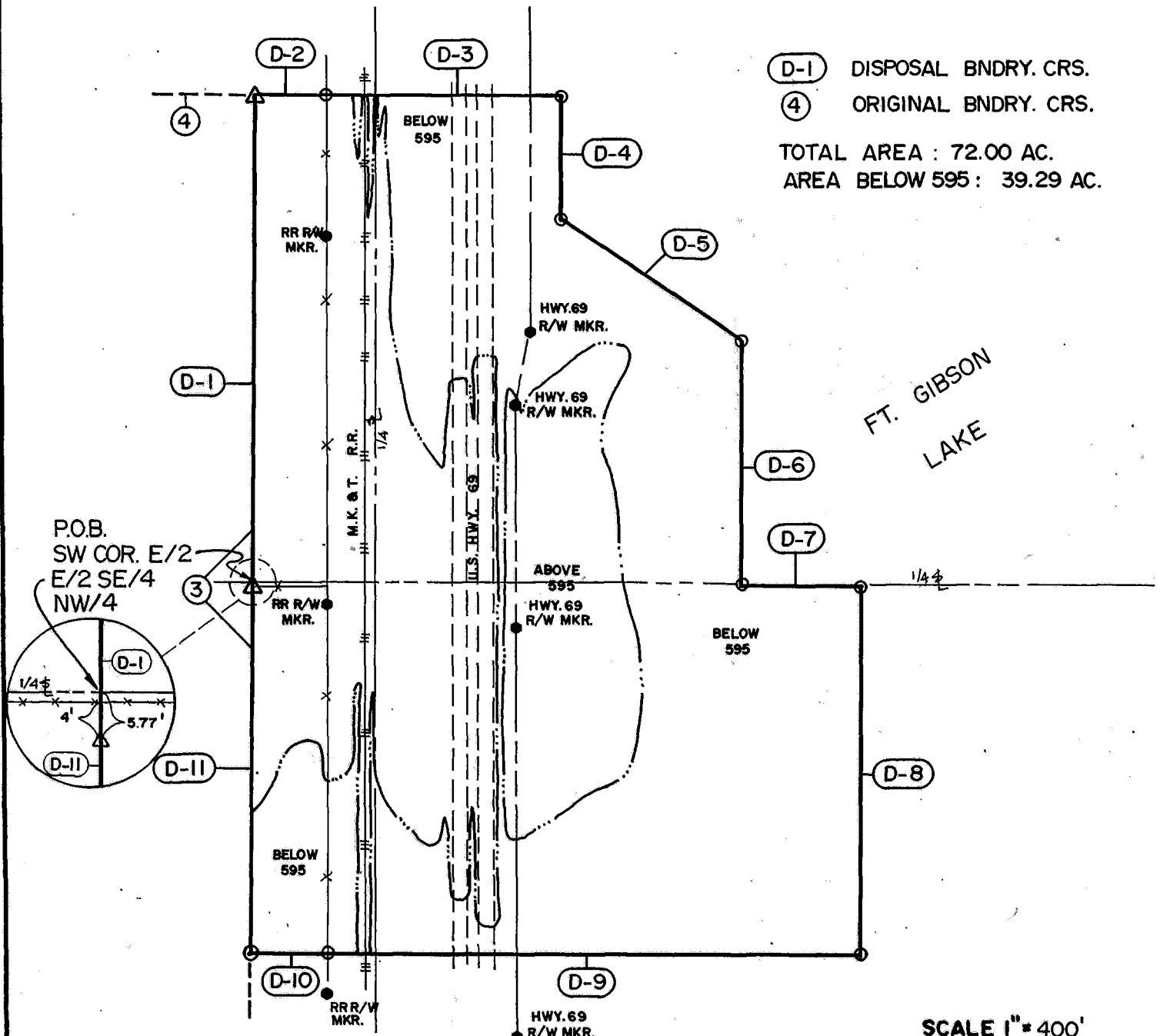


Scale: 1" = 50'
 Date: June-October 1973
 Field Book No. 5-1863

**DISPOSAL TRACT SURVEY PLAT
FT. GIBSON DAM & RESERVOIR
LAKE FT. GIBSON, OKLA.**

SEC. 13 , T 20 N , R 18 E , COUNTY MAYES

PARCEL NO. 61 Performed Under Contract No. DACA56-88-D-0050



(D-1) DISPOSAL BNDRY. CRS.
(4) ORIGINAL BNDRY. CRS.
TOTAL AREA : 72.00 AC.
AREA BELOW 595 : 39.29 AC.

Course No.	Distance	Bearing	Course No.	Distance	Bearing
D-1	1328.27	N 00° 02' 42" W			
D-2	188.45	N 89° 50' 46" E			
D-3	636.05	N 89° 50' 31" E			
D-4	330.61	S 00° 02' 47" E			
D-5	595.17	S 56° 15' 35" E			
D-6	659.98	S 00° 03' 14" E			
D-7	329.87	N 89° 50' 50" E			
D-8	992.41	S 00° 02' 56" E			
D-9	1440.00	S 89° 48' 44" W			
D-10	209.17	S 89° 51' 13" W			
D-11	987.41	N 00° 02' 49" W			

Field Book No. 5-1863 Date JAN., 1989

CERTIFICATE OF SURVEY ENTZ ENGINEERING & ASSOCIATES INC. AND
I Hereby Certify That The HUFFMAN SURVEYING CO., INC.
Above Plat is a True and Correct A Joint Venture
Representation of the Survey for
Made in Sec. 13 T 20 N, R 18 E.

U.S. ARMY ENGINEER DISTRICT, TULSA
CORPS OF ENGINEERS

Ron Huffman
Ron Huffman L.S. 1020

— LEGEND —
Δ MONUMENT
□ ORIGINAL CORNER
○ IRON PIN W/ CAP