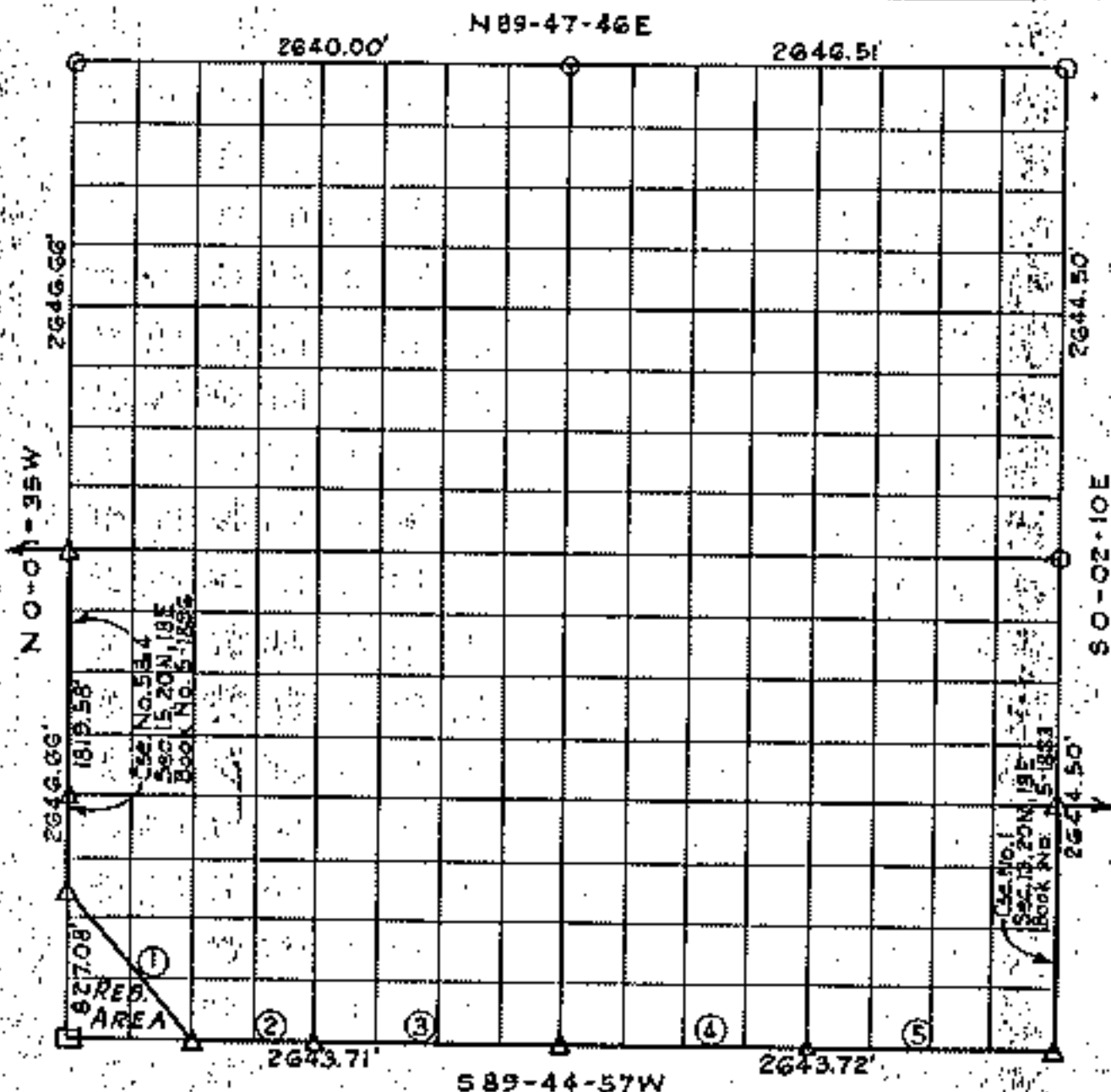


PARTIAL BOUNDARY SURVEYS
FORT GIBSON LAKE, AREA "I"
OKLAHOMA

Performed under Contract Number DACW56-76-C-0113
 SEC. 14 T. 20N. R. 18E. COUNTY MAYES



Course No.	Distance	Bearing	Course No.	Distance	Bearing
1	1056.76	S 38° 44' 32" E			
2	660.99	N 89° 44' 57" E			
3	1321.86	N 89° 44' 57" E			
4	1321.86	N 89° 44' 57" E			
5	1321.86	N 89° 44' 57" E			

Certificate of Survey

I hereby certify that the above plat is a true and correct representation of the survey made in Section 14, T. 20N., R. 18E., Mayes County, Oklahoma.

Charles J. Finklea
 Charles J. Finklea
 Registerer Land Surveyor No. 35

Scale: 1:10000
 Date: Feb.-July 1976
 Field Book No. 5-1863

Sheet 1 of 2

Legend

- △ Monument
- Orig. Corner
- Iron Pin
- ▲ Mod. by O.H.D.

4

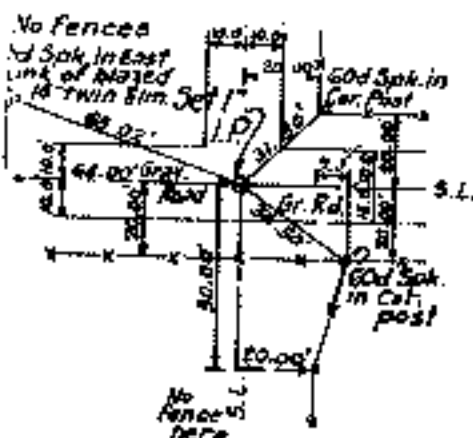
FORT GIBSON LAKE, AREA "I"

OKLAHOMA

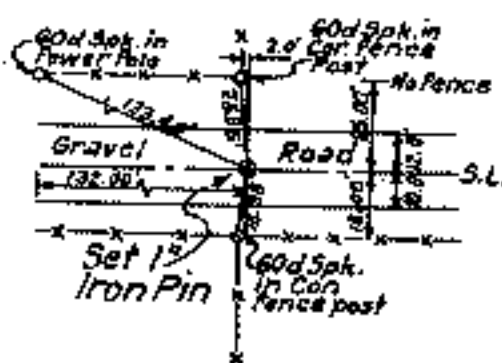
SECTION AND QUARTER SECTION CORNER REFERENCES FOR

SEC. 14, T. 20N., R. 18E., COUNTY MAYES

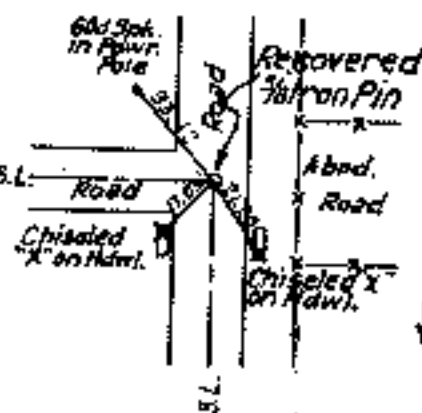
N.W. CORNER



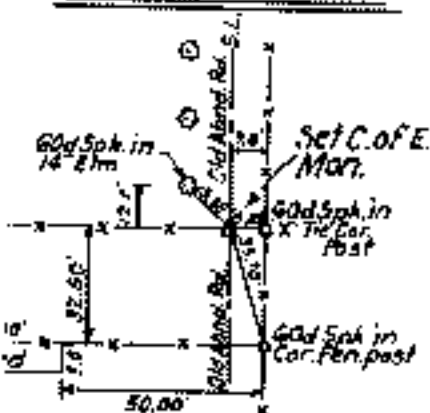
NORTH 1/4 COR.



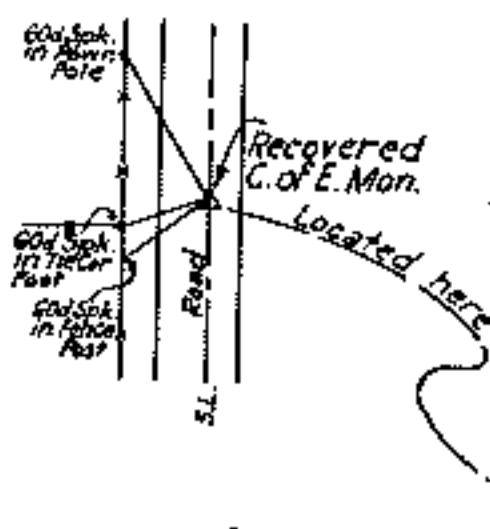
N.E. CORNER



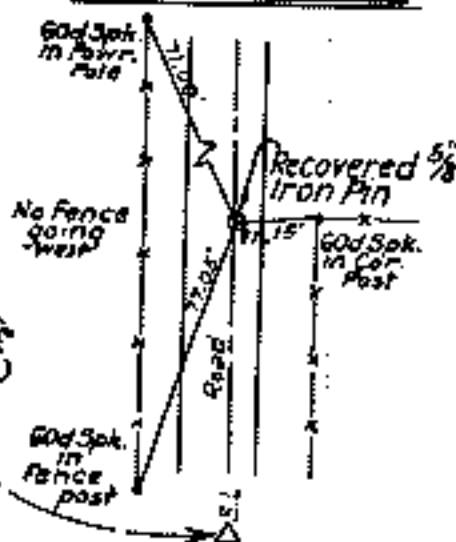
WEST 1/4 COR.



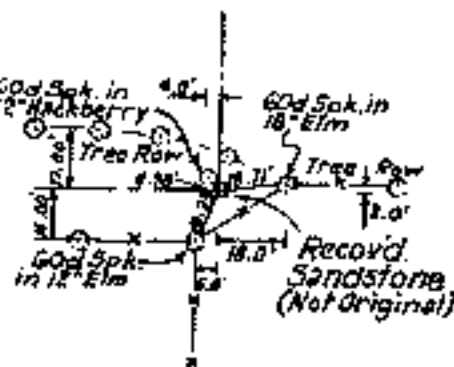
SOUTH 1/16 COR. 14/13



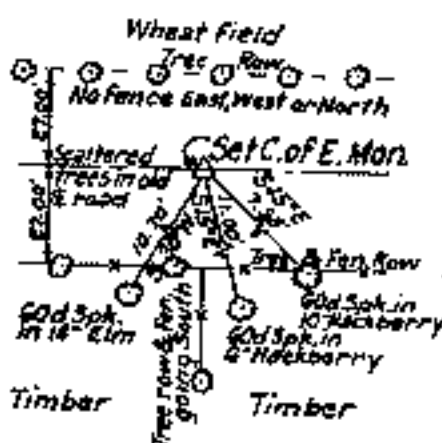
EAST 1/4 COR.



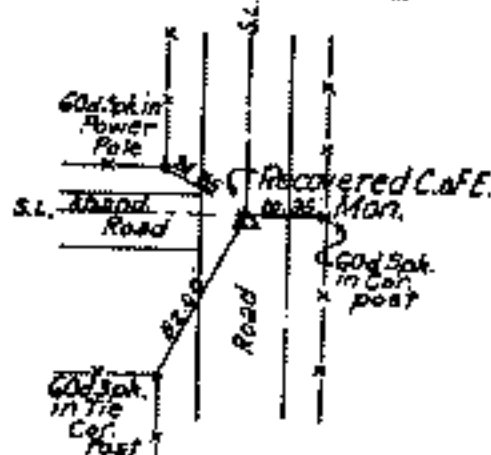
S.W. CORNER



SOUTH 1/4 COR.



S.E. CORNER



Certificate of Survey

I hereby certify that the above is a true and correct representation of the survey made in Section 14, T. 20N., R. 18E., Mayes County, Oklahoma.

Charles J. Finklea
 Charles J. Finklea
 Registered Land Surveyor No. 35

Sheet 2 of 2

Scale: - 1" = 50'
 Date: Feb.-July, 1976
 Field Book No. 5-1893
 5-1896
 8-1898

Legend

- △ Monument
- Orig. Corner
- Iron Pin
- ▲ Monument